

DOMUS NOVA



Fitzroy Park N6
£15,000 p/w



A showpiece of mid-century modern architecture with inspiring contemporary interventions. This four-bedroom Highgate house is characterised by full-height glazing, a host of artwork and seamless connectivity to the outdoors.

Running between the Grove in Highgate to the Boating Pond on Hampstead Heath, Fitzroy Park is a private drive lined with mature trees and mid-century architectural masterpieces. Behind tall steel gates, a yellow stock brick façade is crowned by a large butterfly roof and striking black metalwork. This four-bedroom home has a rich design lineage: first built in 1957 by Danish architect Erhard Lorenz with engineer Ove Arup – best known for his work on the Sydney Opera House.

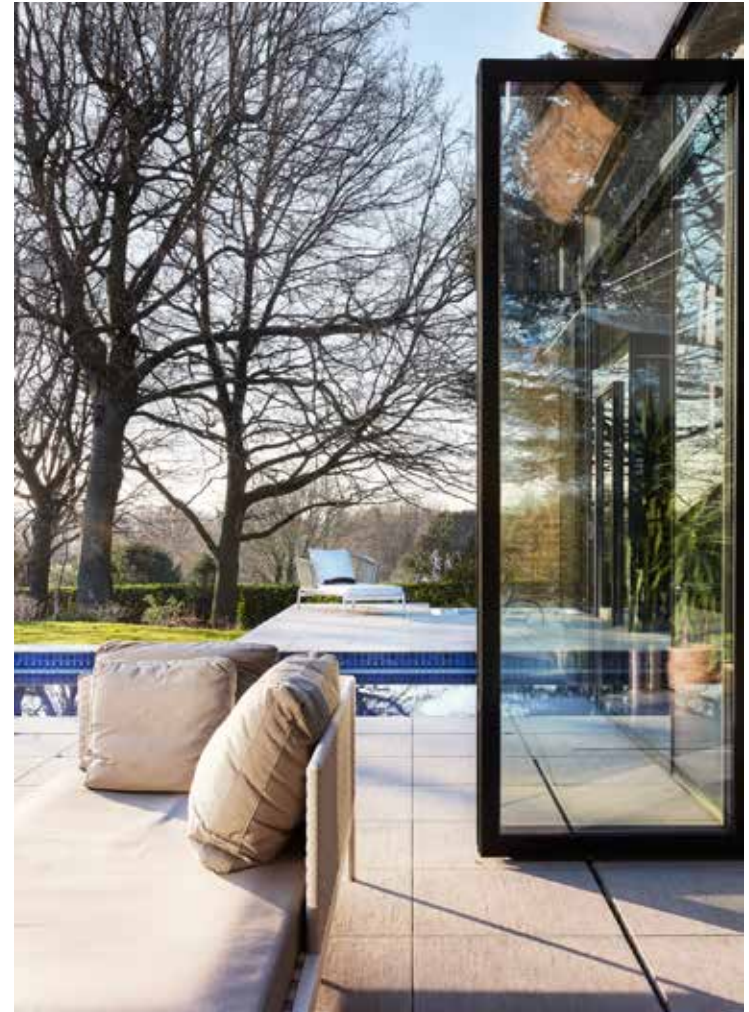
In 1994, the property was remodelled and extended by Czech architect Eva Jiřín to include a conservatory-style day room, gym and 25 metre-long pool. Lastly, a self-contained annexe was installed by the current homeowners for additional, versatile living space.













At either end of the entrance hallway are two sets of full-height saloon doors, opening into the kitchen and reception room respectively. With runs of pale wood cabinets, stainless steel worktops, a Sub-Zero fridge-freezer and sleek Gaggenau appliances, the kitchen is an understated yet functional culinary setting.

Through an archway, reach the split-level, open-plan living reception room. Swathes of natural light cascade across the spacious proportions, thanks to its wraparound floor-to-ceiling glazing. To one side of the upper level, a bespoke dining table seats eight, while at the other, a glass-topped desk makes for a contemporary study space. On the lower level sits clusters of mid-century modern style chairs and sofas in muted jewel tones. There's a relaxed quality to the space, laid with a patchwork of antique rugs.







Family life continues beyond the kitchen into the day room. It's an uplifting and inspiring setting: the whitewashed cubic volume is punctuated by a black steel framework, with girders that criss-cross over the high ceiling. In keeping with Lorenz's design for the main house, Ji i nā installed a mass of glazing into the room, including bi-folding doors that open onto the patio. With its verdant lawn, 25 metre-long swimming pool and border of soaring trees, the garden feels worlds away from the city.

Completing this wing, a glass-clad hallway leads to the fully-equipped gym where a state-of-the-art Pilates machine centres the room.

Completing this wing, a glass-clad hallway leads to the fully-equipped gym where a state-of-the-art Pilates machine centres the room.











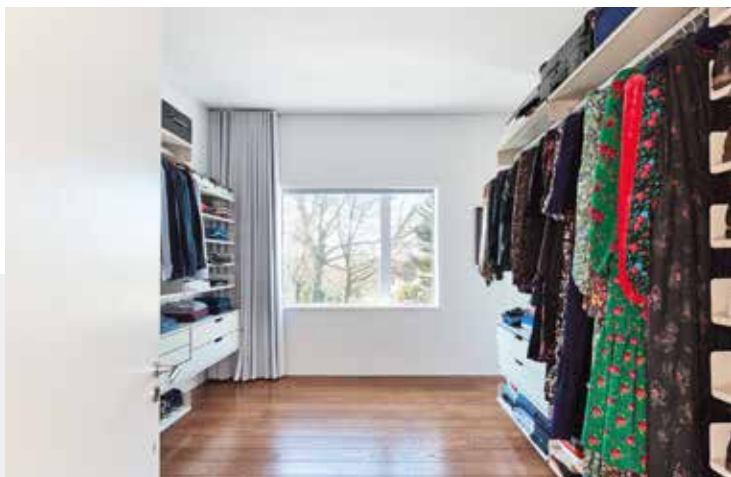
The main stairwell has been finished with the aesthetic precision of a gallery: whitewashed walls are grounded by muted stone treads, while a picture window casts soft light across the collection of contemporary artwork. Polished wood floors lead through saloon doors into the principal bedroom suite.

There's an outstanding inside-out feel granted by the wraparound glazing, which slides open to a poured concrete balcony overlooking the garden. A large dressing room is complete with Vitsoe shelving, and the en suite bathroom is finished with a marble-covered rainfall shower and minimalist dual vanity.









Two further bedrooms feature integrated storage and rich teal-green carpets, both served by a family-sized bathroom.

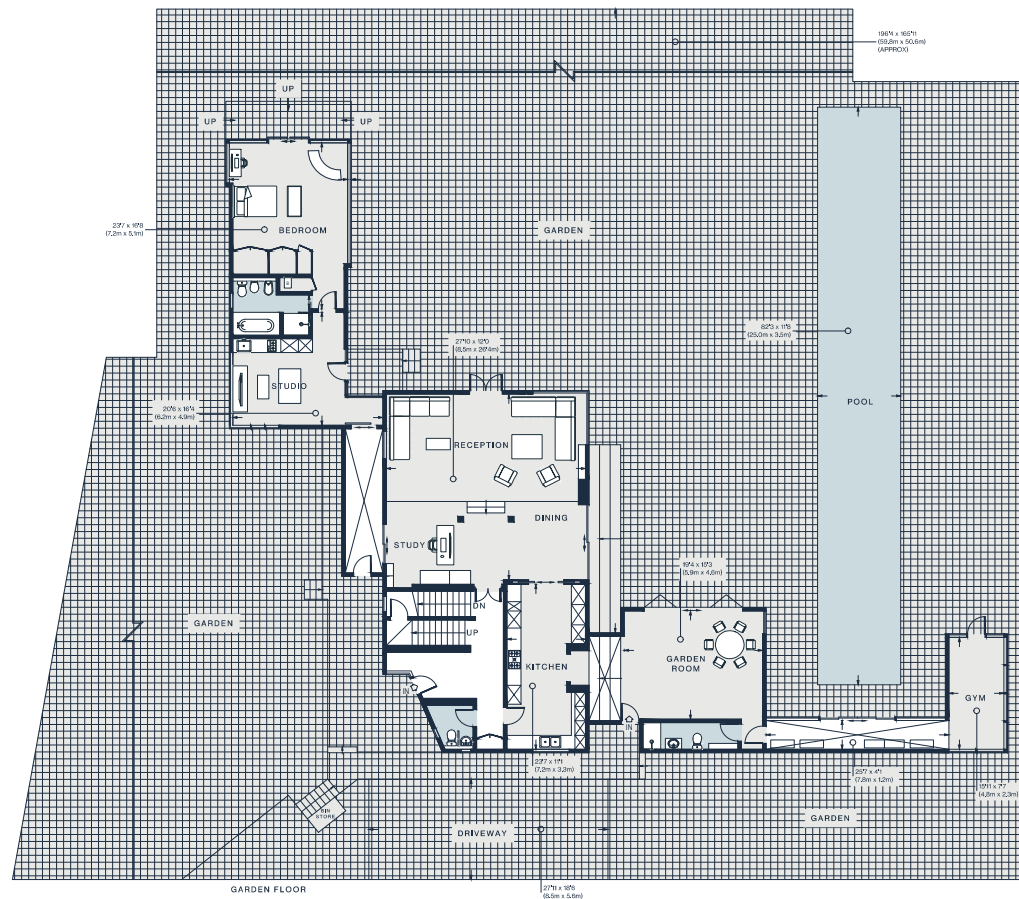
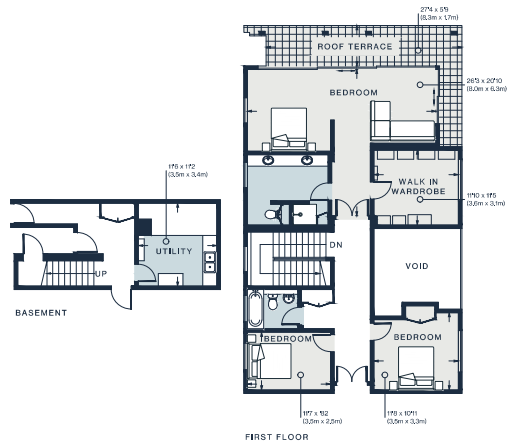
Accessed from the main reception room via a glass-clad hallway, a lateral guest annexe is complete with a kitchen and living room, while its en suite bedroom gazes across the garden through full-height windows.











Approx. Gross Internal Area = 4,230 sq ft / 393.0 sq m
(Excluding Void)

Floor plans are for illustrative purposes only and not to scale. Compliant with RICS code of measuring practice.
mixture layouts are indicative only. This property may be furnished, part-furnished or unfurnished. Please refer to your agent for details.

Property Details

Architect-designed mid-century modern property
Highly sought-after private road
Contemporary kitchen
Open-plan reception and dining room
Garden room
Principal bedroom suite with wraparound terrace
Dedicated dressing room
Two further bedrooms in the main house
Family bathroom
Self-contained annexe with kitchenette and bedroom suite
Fully-equipped gym
Garden with 25m swimming pool and jacuzzi
London Borough of Camden

Approx 4,230 sq ft / 393 sq m
EPC - E
Council Tax Band - H
Deposit Payable - £60,000



Location

Bordering the east side of Hampstead Heath, Highgate is one of London's most picturesque and exclusive neighbourhoods loved by families and celebrities alike. There's a village-like feel to its High Street, lined with cafes, delicatessens and boutique charity shops. The area is surrounded by green spaces: it's a ten minute walk to Waterlow Park and Highgate Cemetery, or fifteen minutes to the Heath – offering freshwater swimming throughout the year. Gaze across the city skyline from Parliament Hill, then head to The Red Lion & Sun for a post-walk roast, a coveted local pub that's been in business since the 16th century.

Nearest tube:
Highgate - 15 mins

Specialising in London
and Ibiza's design-led homes

Let's talk
020 7727 1717
lettings@domusnova.com
domusnova.com

The property particulars are a guide not statements. Descriptions, photographs, and plans are for guidance and should be checked by the prospective tenant. The Property is offered "subject to contract and references". No warranties, representations, or Tenancy is given by Domus Nova. Expenses incurred by a prospective tenant will not be reimbursed if the Landlord withdraws prior to the Tenancy Agreement being signed, dated and exchanged and cleared funds received. Furniture and other items shown in a property at viewing may belong to a current tenant. The prospective tenant should verify in writing which fixtures and fittings forms part of the Tenancy. Our full lettings disclaimer together with trading names and our [Privacy Policy](#) is shown on our website