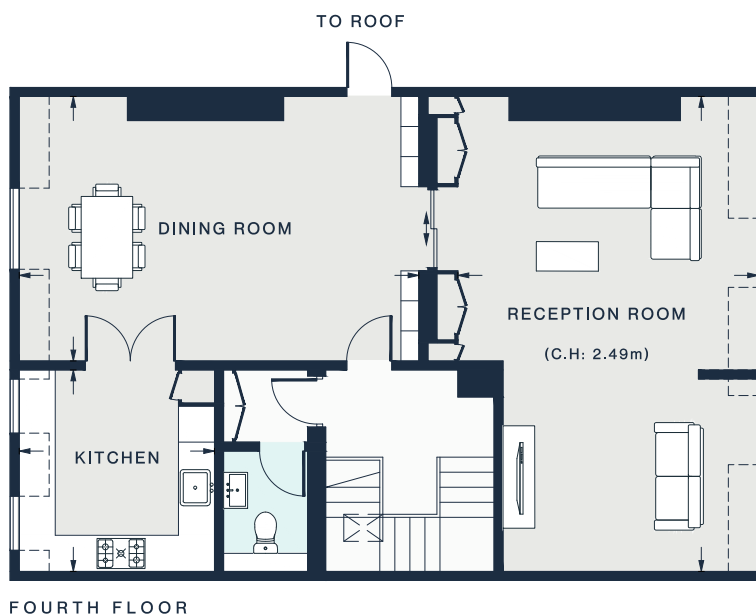


 = REDUCED HEAD HEIGHT BELOW 1.5M



RECEPTION ROOM
25'9 x 16'4 (7.8m x 4.9m)

KITCHEN
10'11 x 10'8 (3.3m x 3.2m)

DINING ROOM
21'10 x 14'5 (6.6m x 4.3m)

PRINCIPAL BEDROOM
16'1 x 15'11 (4.9m x 4.8m)

BEDROOM
15'9 x 12'9 (4.8m x 3.8m)

Approx. Gross Internal Area = 2,022 sq ft / 187.9 sq m

Floor plans are for illustrative purposes only and not to scale. Compliant with RICS code of measuring practice.
Prepared for Domus Nova. Copyright © All Rights Reserved.