

# DOMUS NOVA



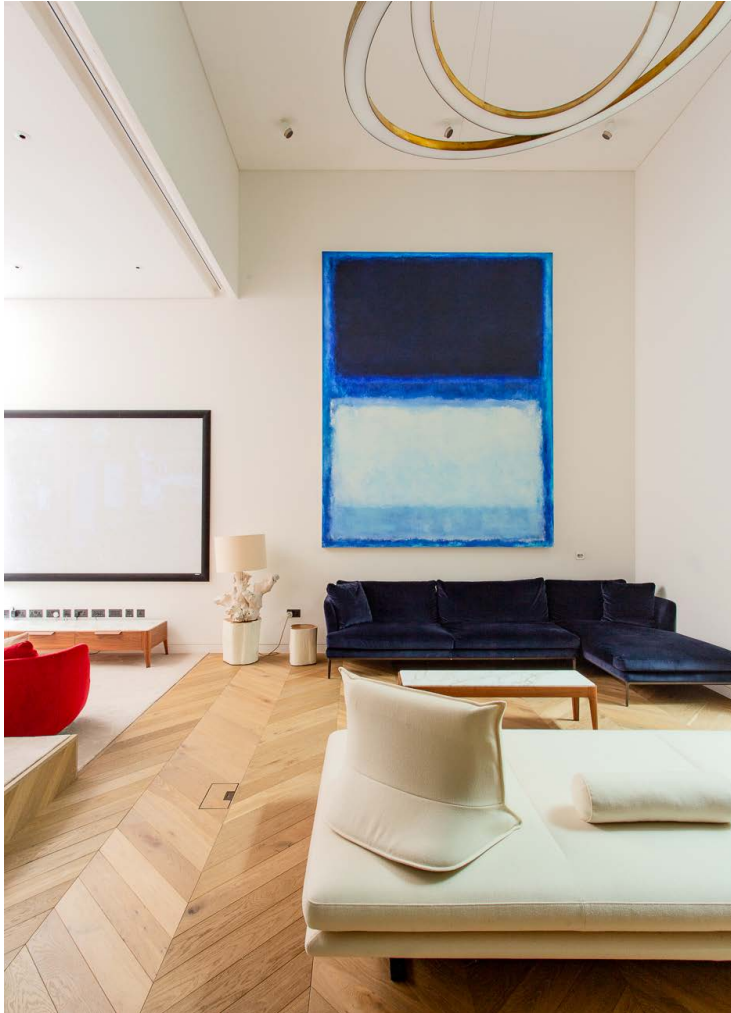
Fernshaw Close  
£6,250 p/w Long Let / £13,000 p/w Short Let

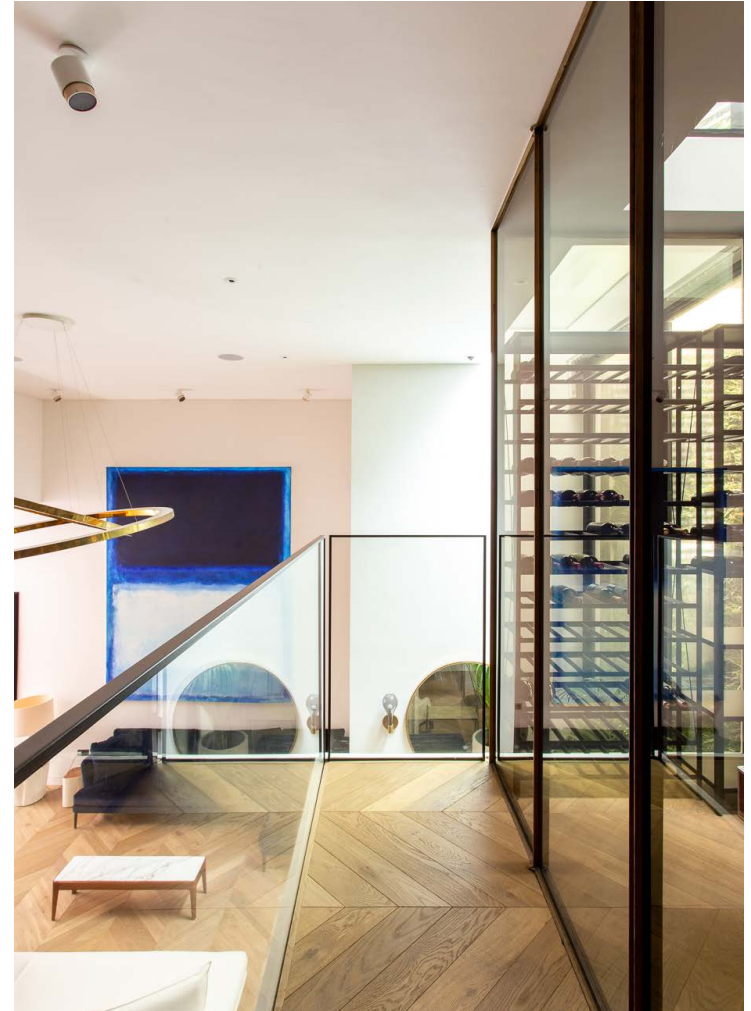


Revelling in drama, a double-height reception room spans the basement and lower ground levels. A patio with a living wall draws light into the space, which includes a glass-sided office, a curtained home cinema and a small bar. High above the design-led living area, two gold rings form a sculptural chandelier on a grand scale.

Bespoke joinery soars upwards to meet the five-metre-high ceiling. Behind, a staircase ascends to the lower ground level which draws together a bedroom suite, a utility room and a temperature-controlled wine room that sits above the open-plan living area below.











A hidden oasis of palatial proportions. This five-bedroom house in Chelsea pairs expansive glazing with warm wood tones to create inviting, light-filled interiors.

Timelessly elegant textures. Bold, contemporary design. Taking its cues from mid-century modernism, this imaginative home places form with function across considered living spaces and calming bedroom suites.

On the ground floor, sunlight is drawn in through a glass-walled dining area. This space is enveloped in luscious views and has seating for eight. Chevron flooring ushers guests to a convivial living area illuminated by an amorphous Tom Dixon light feature.











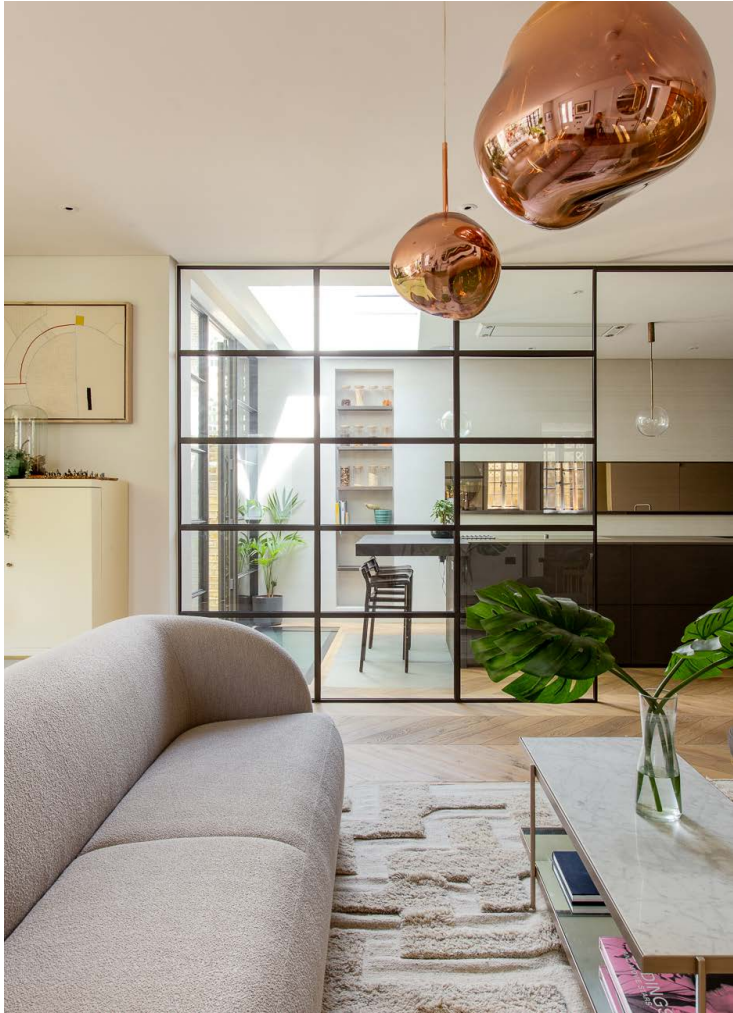




Recalling the aesthetic of the dining space, an internal wall of steel-framed glass adds industrial rigour and zones the space while channelling light through the home. A bespoke Bulthaup kitchen is arranged around a central island which pairs Gaggenau appliances and a skylit breakfast bar. The dining area and the kitchen both provide access to a leafy garden with a generous dining pavilion.







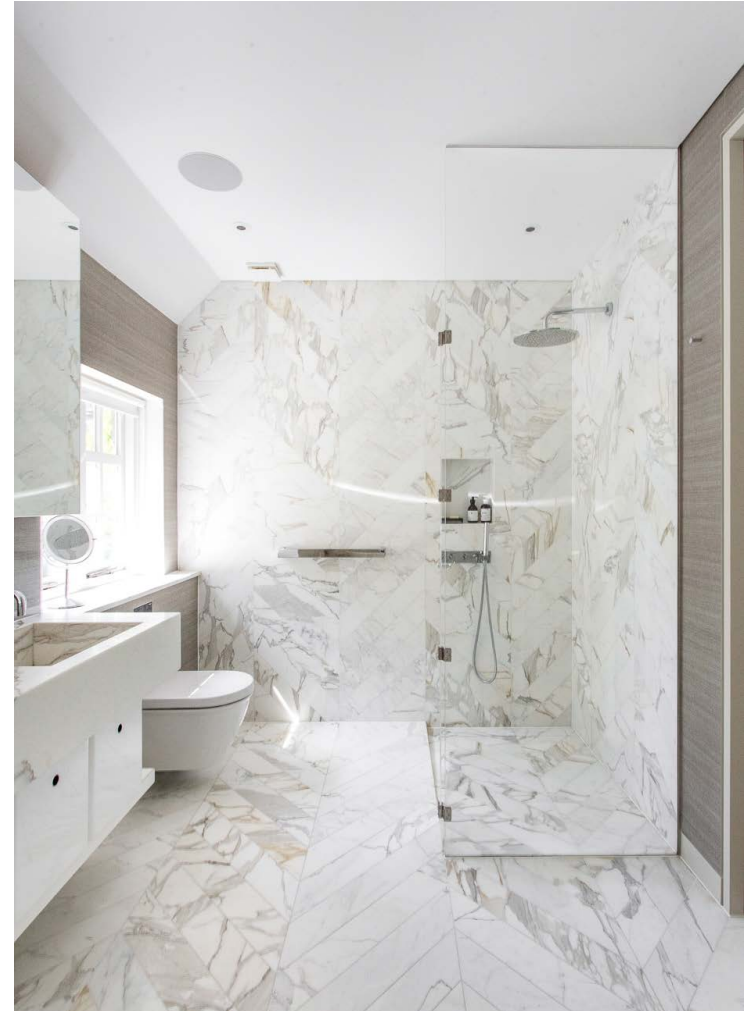


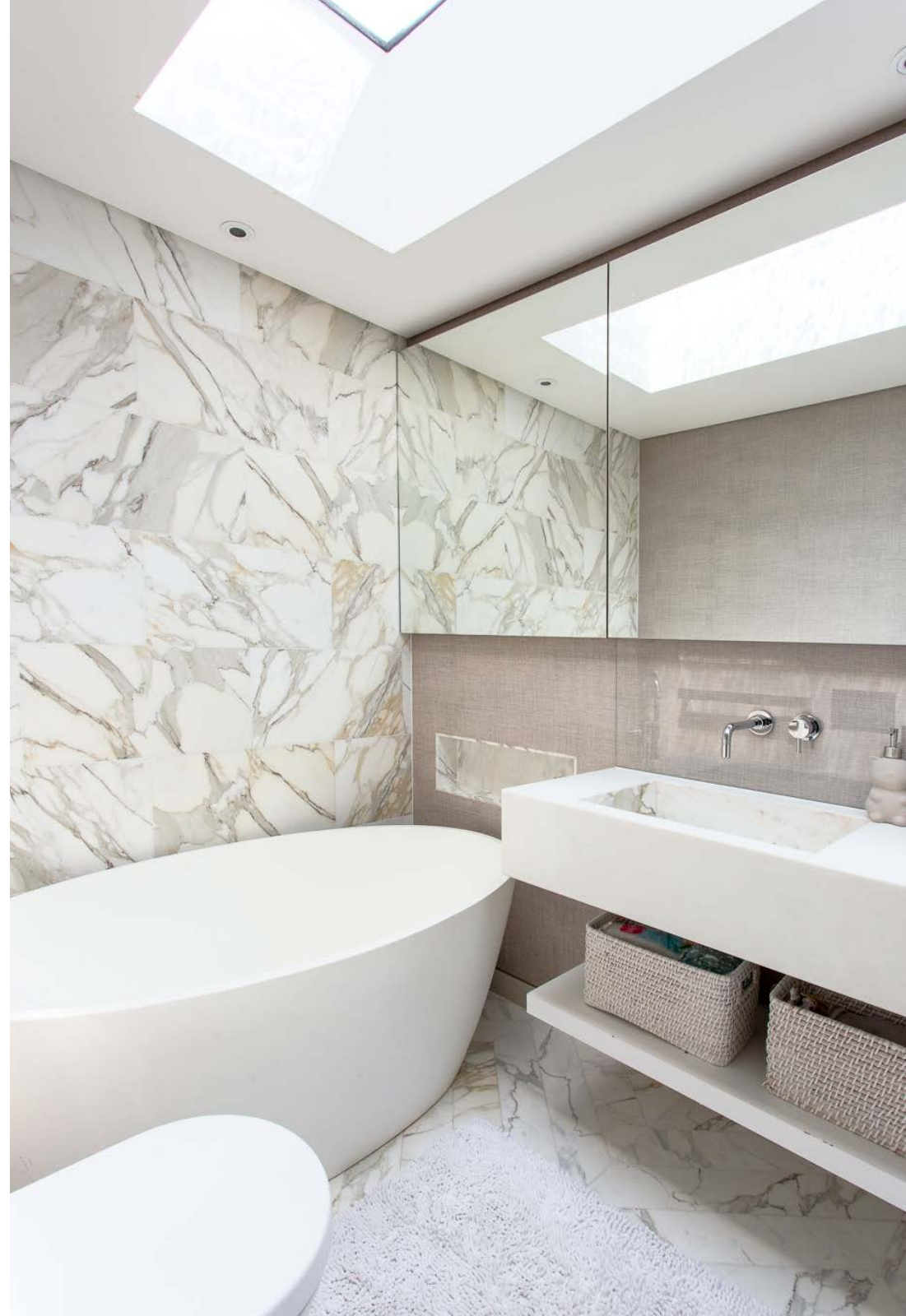


Dominating the first floor, a feeling of tranquillity has been crafted within the triple-aspect principal bedroom suite. Calming tones and textures flow into a Calcutta marble bathroom with a dual vanity, walk-in rainfall shower and a freestanding bathtub. This suite also benefits from a Besana dressing room.

An additional bedroom suite sits on this floor while two further bedrooms take the second floor, along with a Crosswater shower room and a roof terrace taking in views of the Chelsea skyline. The home also benefits from integrated speakers, CCTV and a Control4 system for air conditioning, lighting and security.



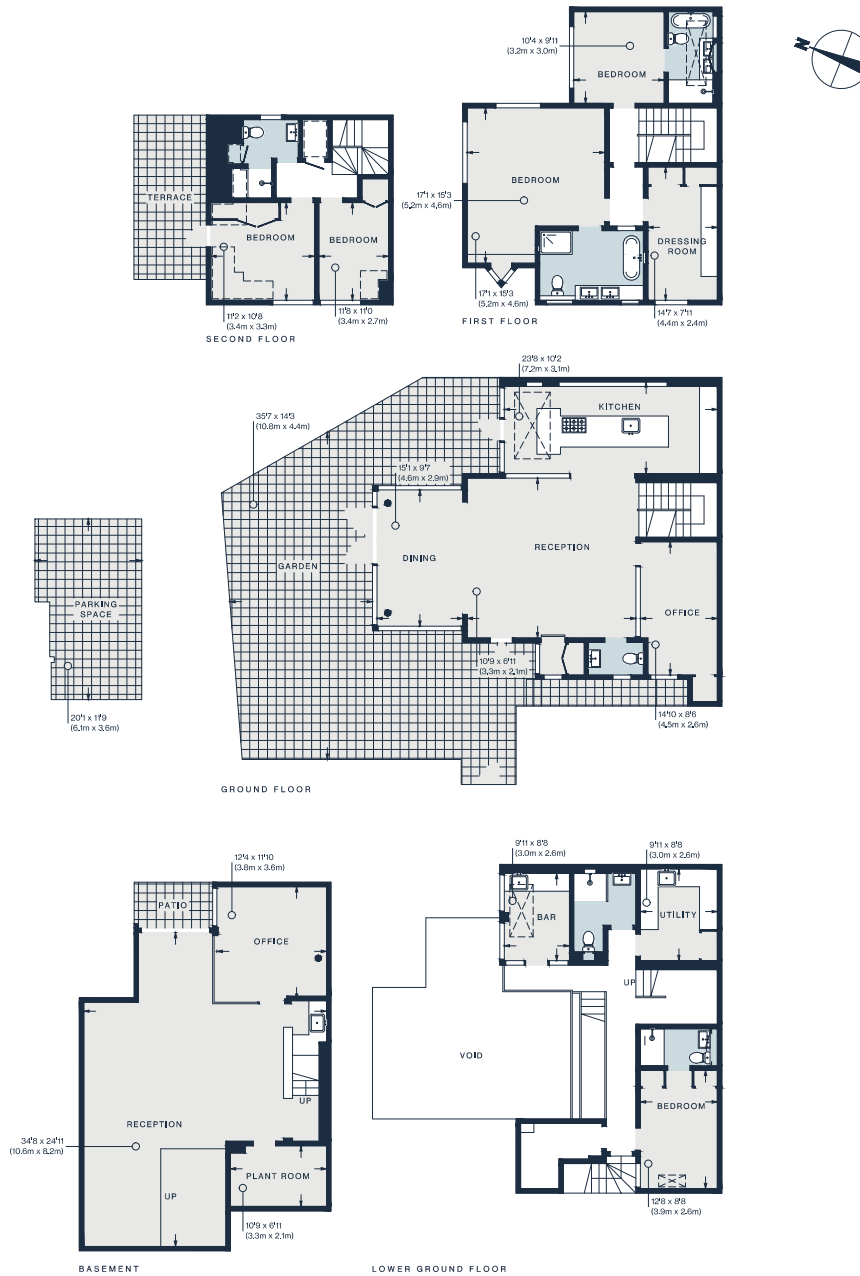












Approx. Gross Internal Area = 3,601 sq ft / 335 sq m

Floor plans are for illustrative purposes only and not to scale. Compliant with RICS code of measuring practice. Furniture layouts are indicative only. This property may be furnished, part-furnished or unfurnished. Please refer to your agent for details.

## Property Details

- Double-height reception room with cinema
- Open-plan living and dining room
- Bespoke Bulthaup kitchen
- Principal bedroom suite with dressing room
- Four further bedrooms
- Two offices
- Bar and wine room
- Utility room
- Garden with dining pavilion
- Roof terrace
- Off-street parking
- Royal Borough of Kensington & Chelsea

- Approx 3,601 sq ft / 335 sq m
- EPC - C
- Council Tax Band - G
- Deposit Payable - £37,500 (LL) / £52,000 (SL)





Specialising in London  
and Ibiza's design-led homes

Let's talk  
020 7727 1717  
lettings@domusnova.com  
domusnova.com

The property particulars are a guide not statements. Descriptions, photographs, and plans are for guidance and should be checked by the prospective tenant. The Property is offered "subject to contract and references". No warranties, representations, or Tenancy is given by Domus Nova. Expenses incurred by a prospective tenant will not be reimbursed if the Landlord withdraws prior to the Tenancy Agreement being signed, dated and exchanged and cleared funds received. Furniture and other items shown in a property at viewing may belong to a current tenant. The prospective tenant should verify in writing which fixtures and fittings forms part of the Tenancy. Our full lettings disclaimer together with trading names and our [Privacy Policy](#) is shown on our website