

# DOMUS NOVA



Faraday Road W10  
£825,000

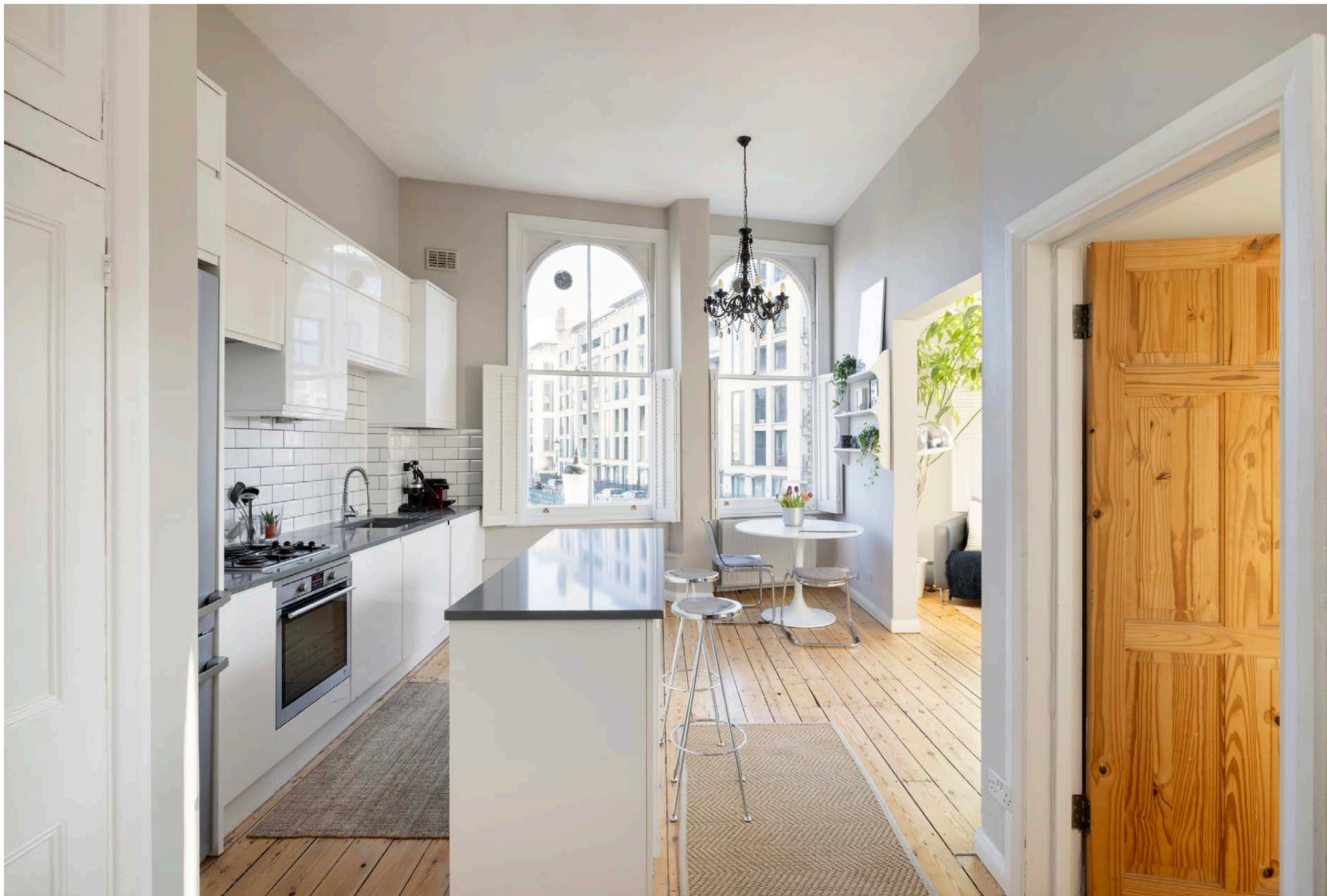


Soaring arched windows and hardwood flooring bring a refreshing quality to this two-bedroom North Kensington apartment for sale.

At the northernmost end of Portobello Road, an elegant stock brick façade plays host to an outstanding two-bedroom apartment. Set on the first floor overlooking Athlone Gardens and Portobello Road, the space benefits from dramatic volumes and an uplifting atmosphere. Six arched windows draw in daylight and accentuate the high ceilings. Completed with white window shutters, this considered design feature produces a continental feel.

Enter the open-plan kitchen, dining and reception room. Sunlight pours in to illuminate a modern culinary setting with glossy cabinets and white metro tiling. An island delineates the space between cooking and dining areas. Exposed wood flooring provides a warm, organic tone and flows into a considered living area – a panoramic vantage point over the neighbourhood.

The poised palette is consistent throughout. A sense of tranquillity has been crafted within the principal bedroom, featuring pale taupe walls illuminated by a large sash window. One further double bedroom is finished in calming, neutral tones. Completing the home is a bathroom, which enjoys white metro tiles and a bathtub with an integrated tower.

















10

10  
PARADAY ROAD W10

10  
FRANCEBELLO ROAD

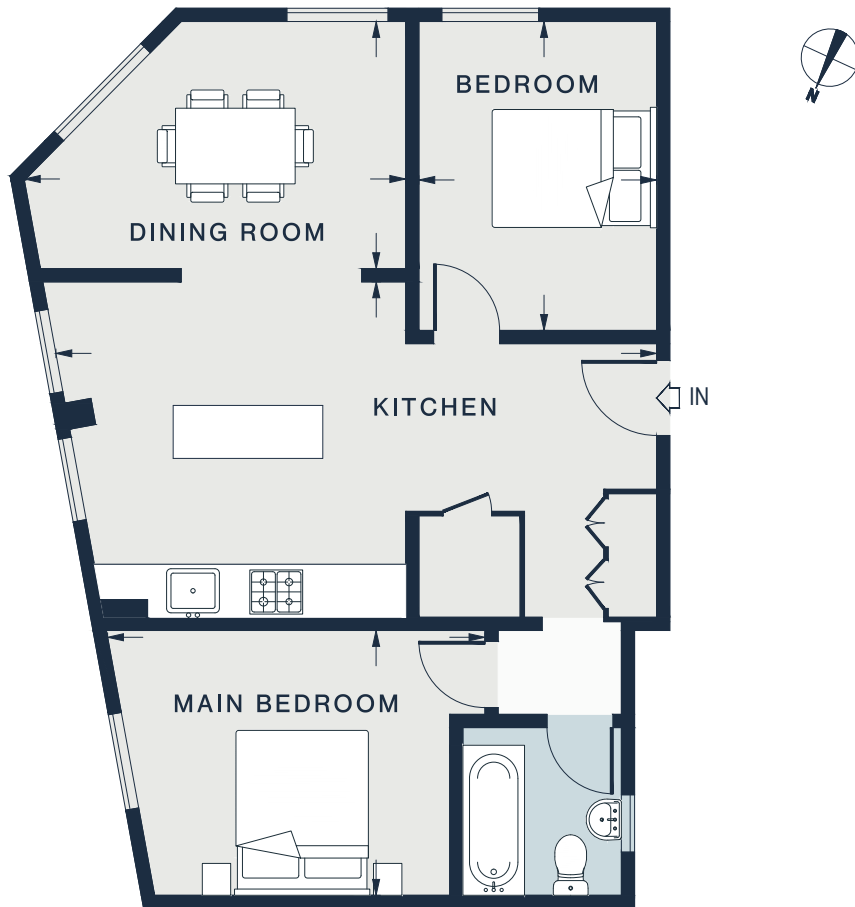
ABSOLUTE

STUDIO • FLOWERS • HOME

ARTS & HOBBYS

FRANCEBELLO ROAD





**FIRST FLOOR**

**DINING ROOM**  
14'4 x 9'3 (4.4m x 2.8m)

**KITCHEN**  
22'8 x 12'10 (6.9m x 3.9m)

**MAIN BEDROOM**  
14'0 x 10'0 (4.3m x 3.0m)

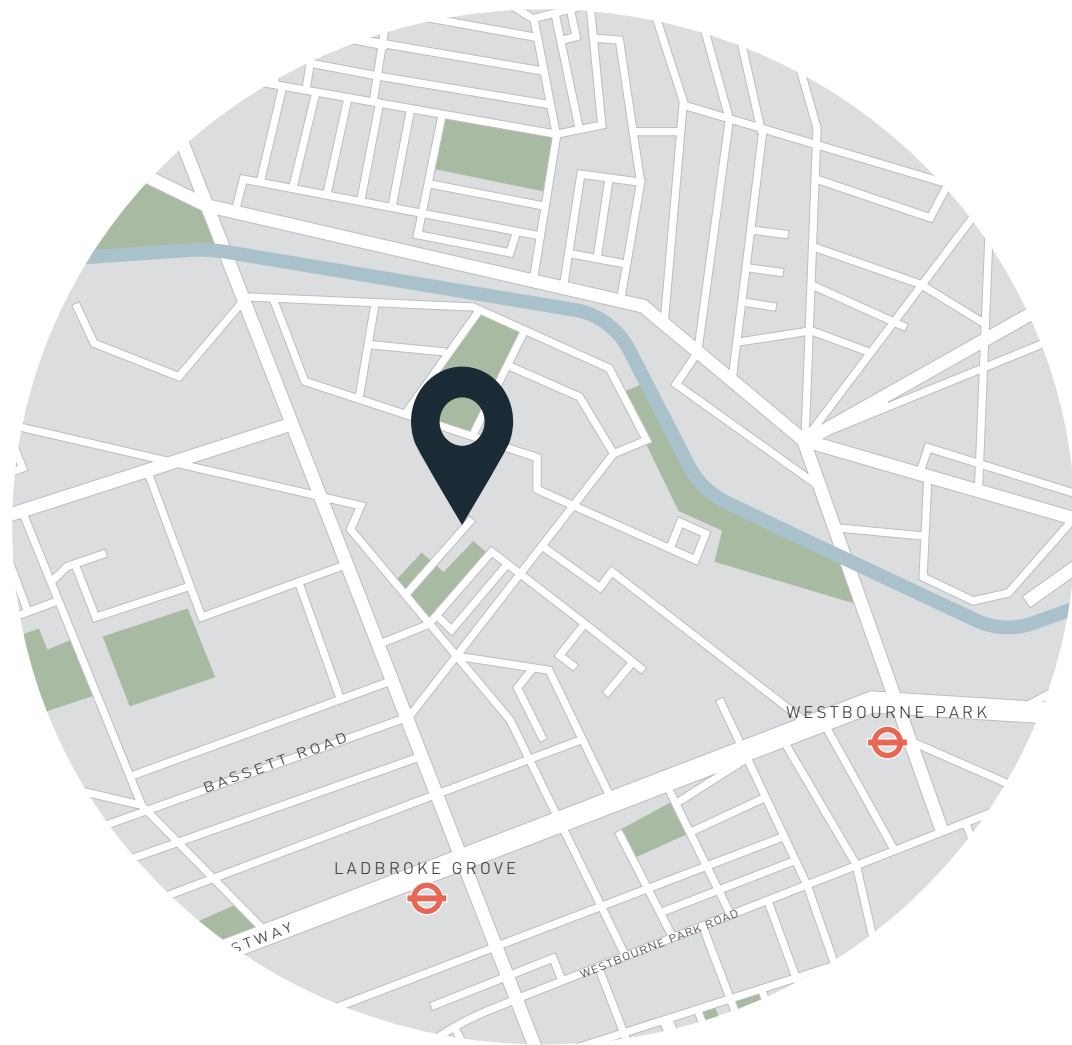
**BEDROOM**  
11'6 x 8'11 (3.5m x 2.7m)

Approx. Gross Internal Area = 676 sq ft / 63 sq m

**Property Details**

- Open-plan kitchen, dining and reception room
- Principal bedroom
- One further bedroom
- One bathroom
- Royal Borough of Kensington & Chelsea

- Approx. 676 sq ft / 63 sq m
- EPC - D
- Council Tax Band - D
- Leasehold - circa 140 years
- Annual Service Charge: approx £1,650



## Location

Set above a beloved neighbourhood florist, this home sits in the heart of West London's most vibrant neighbourhood. Portobello Road is on your doorstep while bohemian Golborne Road is moments away. Start your day with sweet pastries from Layla Bakery or Lowry & Baker, both one minute from your front door. Head to Golborne Road Market and browse the antique stalls that characterise the area. New dining options, such as Caia and Straker's, have recently joined the array of coveted independent restaurants. For evening ventures, head to The Elgin for a drink or further into Notting Hill to catch a film at the Electric Cinema. Local green spaces include Emslie Horniman's Pleasance Park and, directly opposite, Athlone Gardens.

Ladbroke Grove - 8 mins (Circle, Hammersmith & City)

Specialising in London  
and Ibiza's design-led homes

Let's talk  
020 7221 7817  
sales@domusnova.com  
domusnova.com

The particulars above are a guide, not an offer or contract. Descriptions, photographs and plans are not statements or representations of fact. Measurements are approximate and not to scale. Prospective purchasers must verify the accuracy of the information within the particulars. Domus Nova does not give any representations or warranties; nor represent the Seller legally. Domus Nova has no liability, for any costs, losses or expenses incurred by the Seller or a prospective buyer relating to the sales and buying transaction.

Our Sales Disclaimer, trading names and privacy policy on how your data is processed and used is found in full on our website in our [Privacy Statement](#).

© Domus Nova 2024. All rights reserved.