

# DOMUS NOVA

Elvaston Place

South Kensington SW7

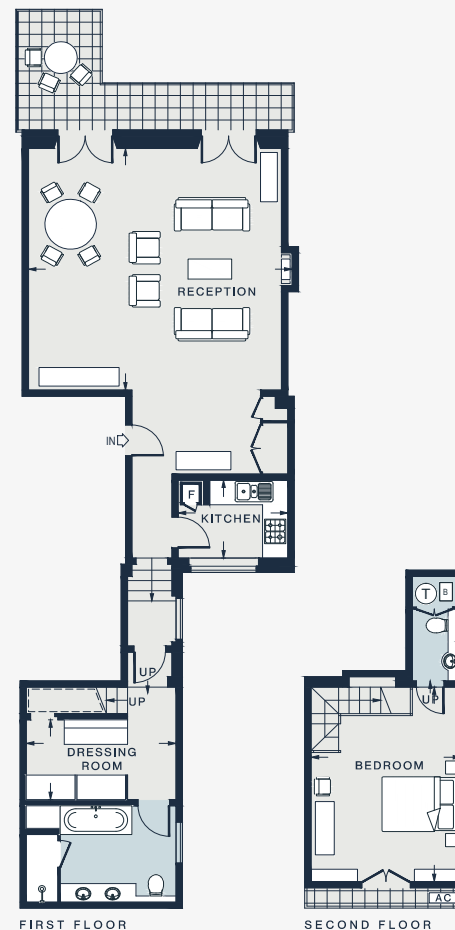
APPROXIMATE GROSS INTERNAL AREA

1,012 sq ft / 94.1 sq m

020 7727 1717

domusnova.com

LONDON | IBIZA



RECEPTION  
20'7 x 19'5 (6.0m x 5.9m)

KITCHEN  
8'6 x 6'3 (2.6m x 1.9m)

DRESSING ROOM  
11'7 x 6'5 (3.5m x 2.0m)

BEDROOM  
16'6 x 11'9 (4.7m x 3.6m)

Approx. Gross Internal Area = 1,012 sq ft / 94.1 sq m

Floor plans are for illustrative purposes only and not to scale. Compliant with RICS code of measuring practice. Furniture layouts are indicative only. This property may be furnished, part-furnished or unfurnished. Please refer to your agent for details.