

DOMUS NOVA



Elsham Road W14
£1,750,000



Contemporary design and period accents create character in this three-bedroom maisonette for sale in West Kensington.

Behind a leafy green canopy, dark tones and tantalising textures create inviting spaces for modern living in this period maisonette.

From the entrance, light filtering through a French window brings an uplifting feel. An airy reception room creates a striking impression – black varnished wooden floors drawing attention to a feature fireplace. Against deep beige walls, its white marble surround offers an alluring visual contrast. Tall sash windows stretch up to the ceiling, flooding the space with natural light.

Connecting the adjacent room, sliding doors draw back to reveal a contemporary kitchen. Sleek glossy cabinetry forms a link between spaces, recalling the colours of the reception room. Contrasting the dark green marbled backsplash, an abstract garnet red chandelier overhangs a central dining area.







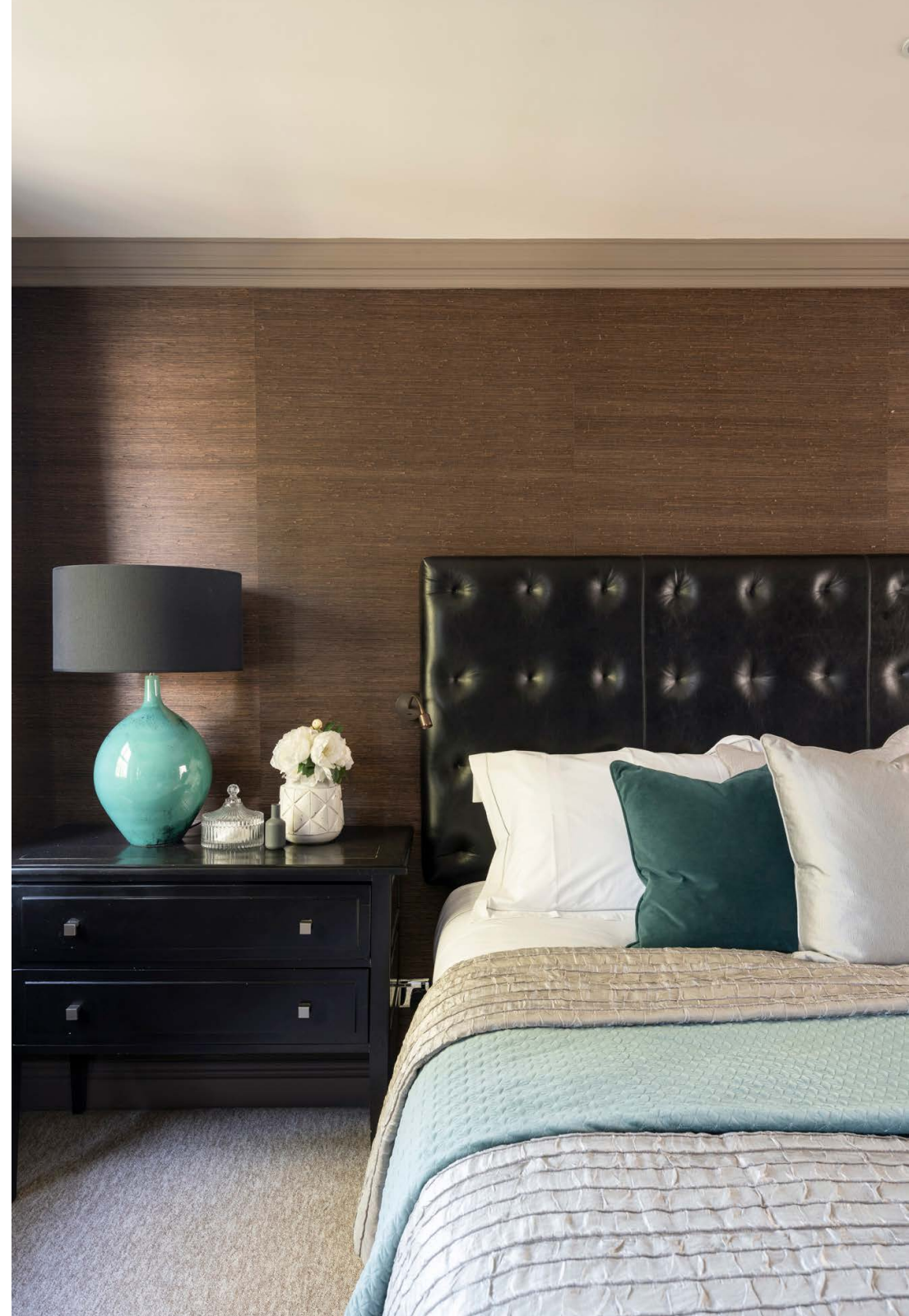




Across the top floor, an alluring interplay of deep hues and natural light generates a refined feel in the principal bedroom suite. An array of textures – from cream carpet to dark bronze textured wallpaper – brings depth to the open space. Hidden wardrobes offer ample storage options. Through a dedicated dressing space, a cool brown en suite hosts a grand black and white tiled dual shower.

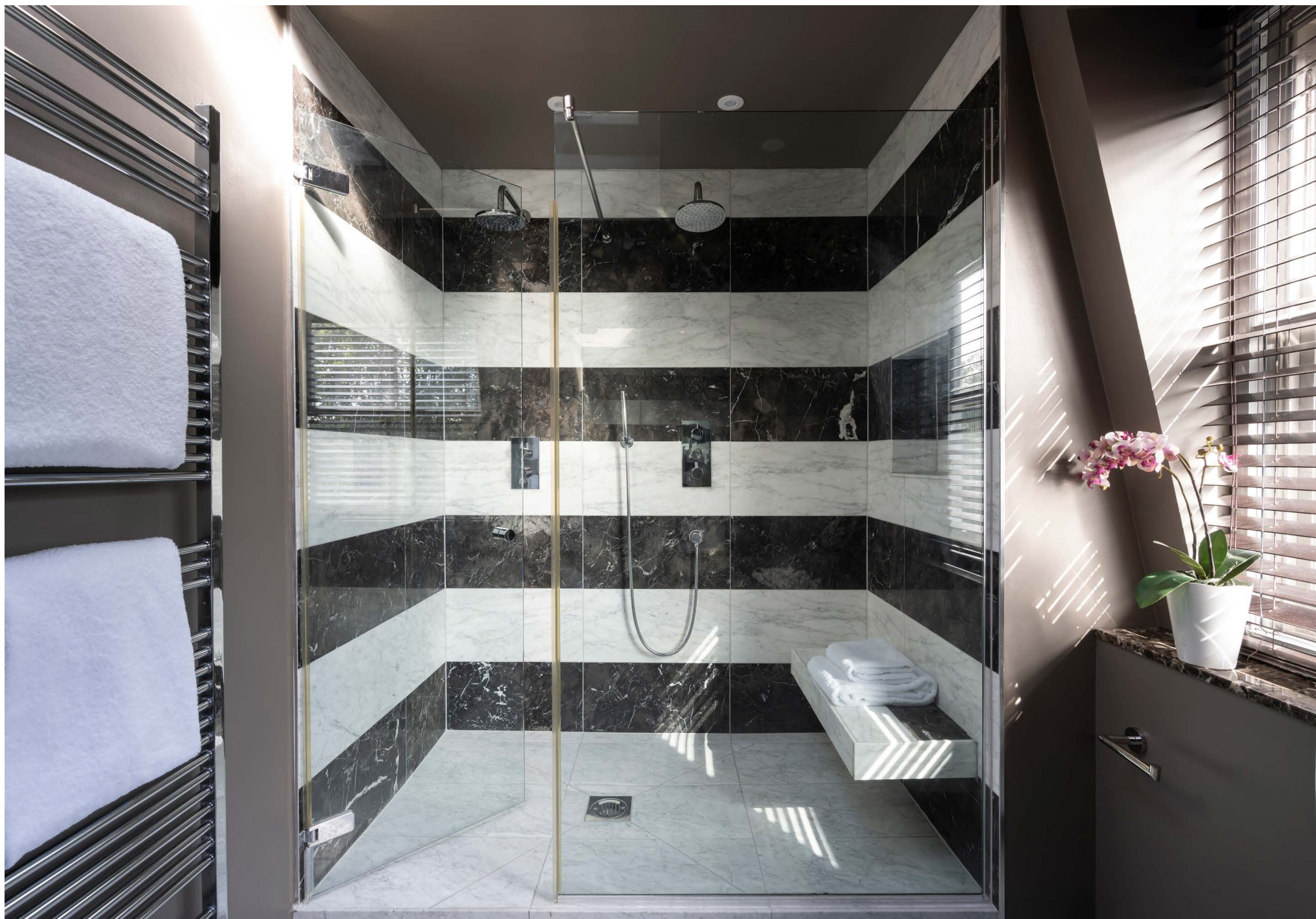
Sage green walls create a soothing atmosphere in the guest bedroom suite – an elegant fireplace a striking focal feature around which to style the room. Built-in wardrobes seamlessly merge with the wall, reducing clutter. Complete with a large bathtub, a bright en suite bathroom sits adjacent.

Gently juxtaposing pale grey walls, white cornicing brings character to the second guest bedroom. Floor to ceiling integrated wardrobes line the wall, while a central alcove creates space for artwork or a TV. A spacious family bathroom serves this bedroom.





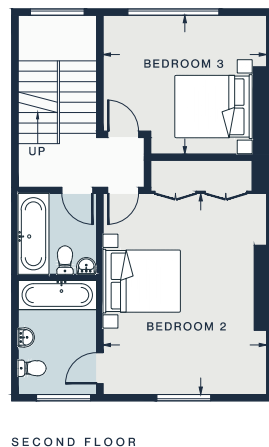
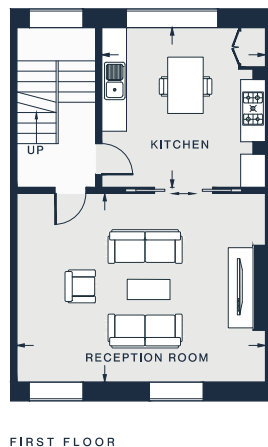
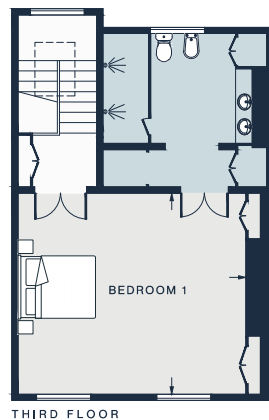
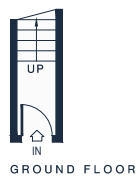












RECEPTION
19'9 x 15'0 (6.0m x 4.5m)

BEDROOM 2
15'6 x 13'0 (4.7m x 3.9m)

BEDROOM 1
18'0 x 15'9 (5.4m x 4.8m)

KITCHEN
13'0 x 12'9 (3.9m x 3.8m)

BEDROOM 3
13'0 x 11'0 (3.9m x 3.3m)

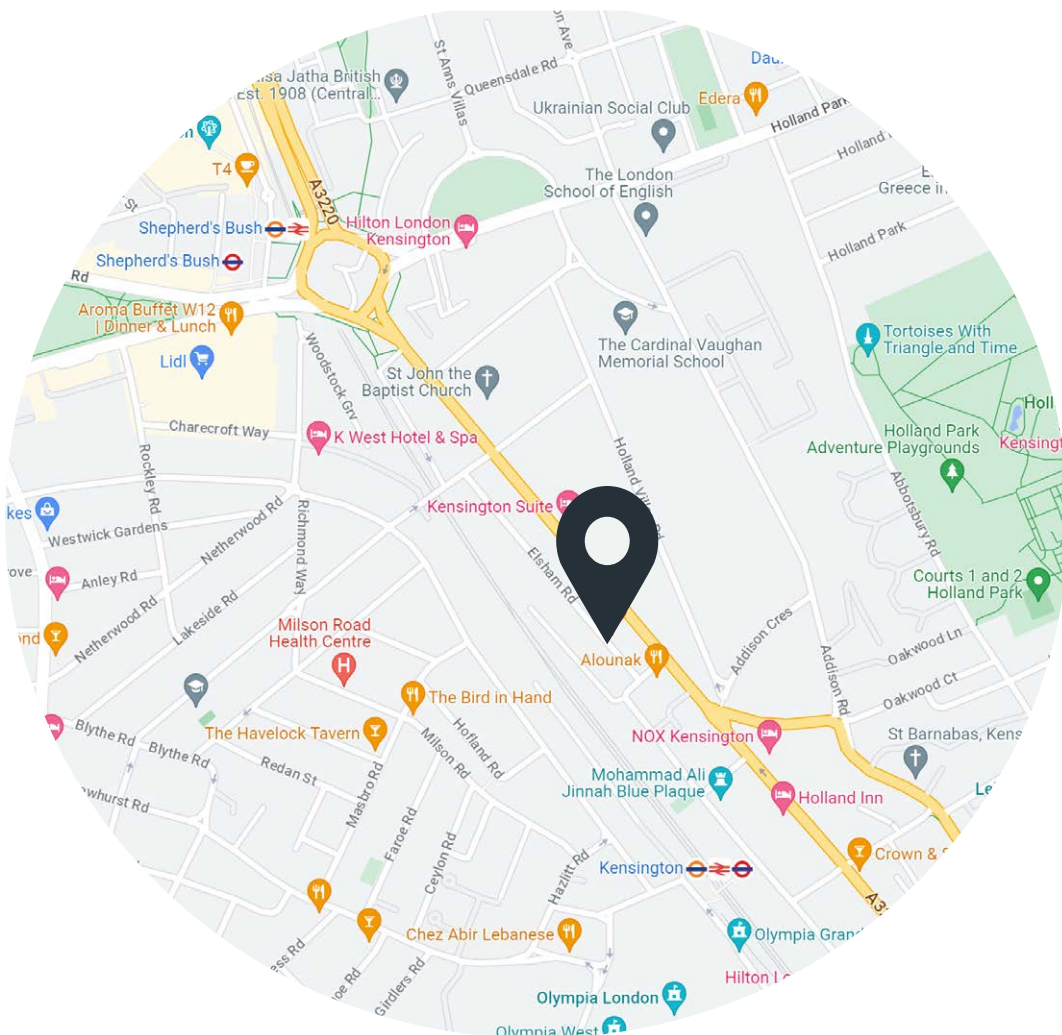
Approx. Gross Internal Area = 1,741 sq ft / 161.7 sq m

Floor plans are for illustrative purposes only and not to scale. Compliant with RICS code of measuring practice.

Property Details

Open plan kitchen and reception room
Principal bedroom suite
Guest bedroom suite
One further bedroom
Family bathroom
Royal Borough of Kensington & Chelsea

Approx. 1,741 sq ft / 161.7 sq m
EPC - C
Council tax - F
Share of freehold - Circa 986 years



Location

Hidden away in tranquil West Kensington, Elsham Road is just moments from the prime hotspots of West London. Start your day with breakfast in Aveda Café's mini urban jungle, then take a stroll around Holland Park – less than 10 minutes' walk away. There's an abundance of options for retail therapy, almost equidistant to both Kensington High Street and Westfield shopping centre. Come evening, head to Kitchen W8 for a Michelin-starred European menu.

Kensington – 7 mins (Overground, Southern, District)
 Shepherd's Bush – 10 mins (Central, Overground, Southern)
 High Street Kensington – 20 mins (Circle, District)

Specialising in London
and Ibiza's design-led homes

Let's talk
020 7221 7817
sales@domusnova.com
domusnova.com

The particulars above are a guide, not an offer or contract. Descriptions, photographs and plans are not statements or representations of fact. Measurements are approximate and not to scale. Prospective purchasers must verify the accuracy of the information within the particulars. Domus Nova does not give any representations or warranties; nor represent the Seller legally. Domus Nova has no liability, for any costs, losses or expenses incurred by the Seller or a prospective buyer relating to the sales and buying transaction.

Our Sales Disclaimer, trading names and privacy policy on how your data is processed and used is found in full on our website in our [Privacy Statement](#).

© Domus Nova 2023. All rights reserved.