

DOMUS NOVA



Elgin Crescent W11
£2,000 p/w Long Let / £3,000 p/w Short Let



On one of Notting Hill's most sought-after crescents, this two-bedroom lateral apartment sees refined period architecture reimagined with contemporary flair. With portico façades, ornate pilasters and bay windows, the townhouses along Elgin Crescent embody Notting Hill's handsome architectural heritage. Located on the ground floor of a whitewashed townhouse, this two-bedroom apartment uses its spacious historic framework to showcase stimulating contemporary interior design.

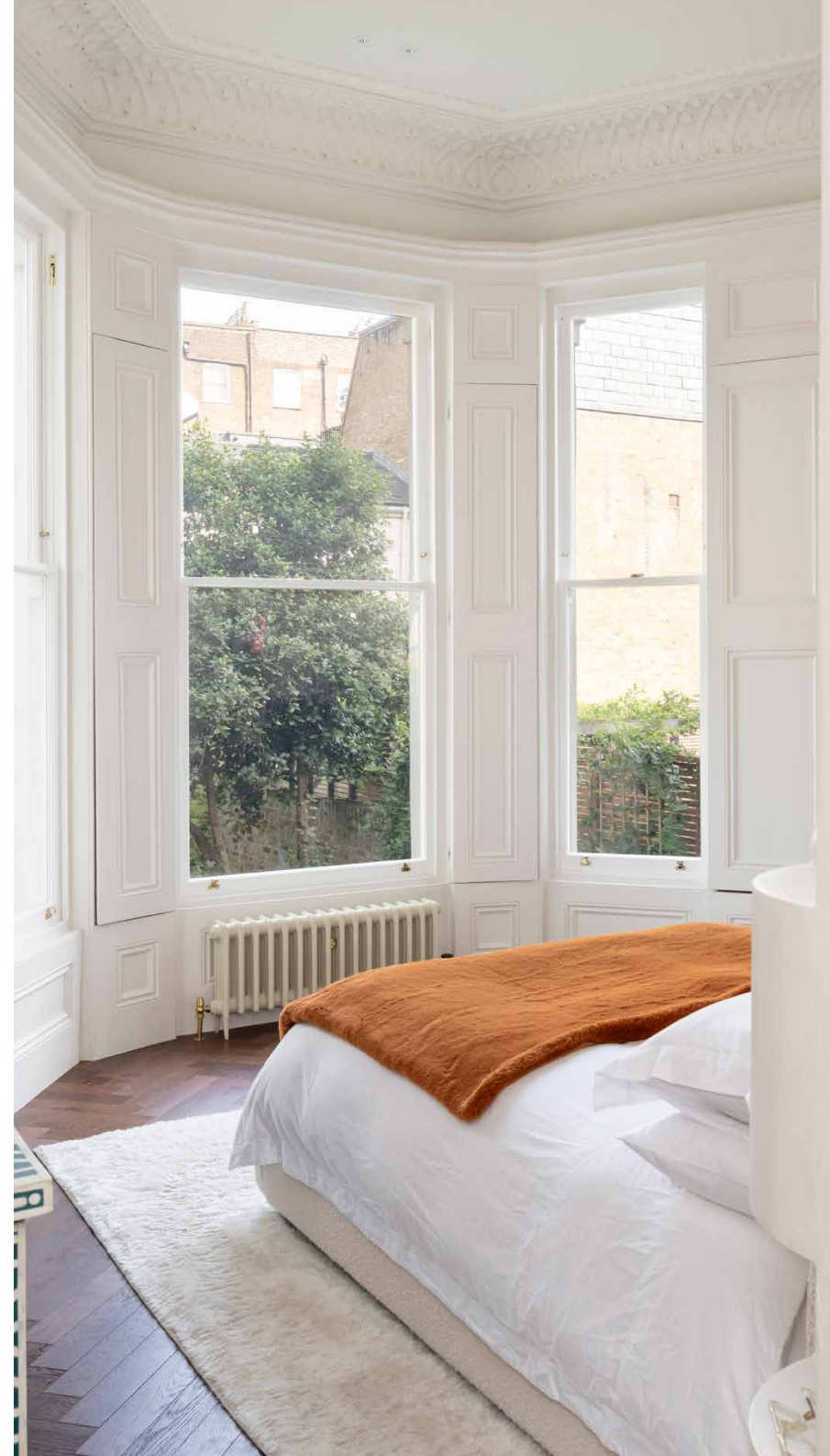
There's a wholly inviting feel to the open-plan kitchen and reception room, courtesy of the large bay windows that diffuse sunlight across the soaring ceiling proportions. Pale walls with ornate cornicing are kept grounded with dark wood parquet floors that span the entire space. The kitchen is a thoroughly modern affair, offsetting glossy whitewashed cabinets and surface tops with a black stove top, gilded faucets and pink pendant lighting. Breakfast stools are tucked neatly under the central island, making for a relaxed dining setting. Colour has also been used to stylish effect in the living area, with the teal of a tuxedo sofa and graphic carpet echoed in the metro-tiled fireplace. Overhead, an eye-catching chandelier casts a warm glow when evening draws in.



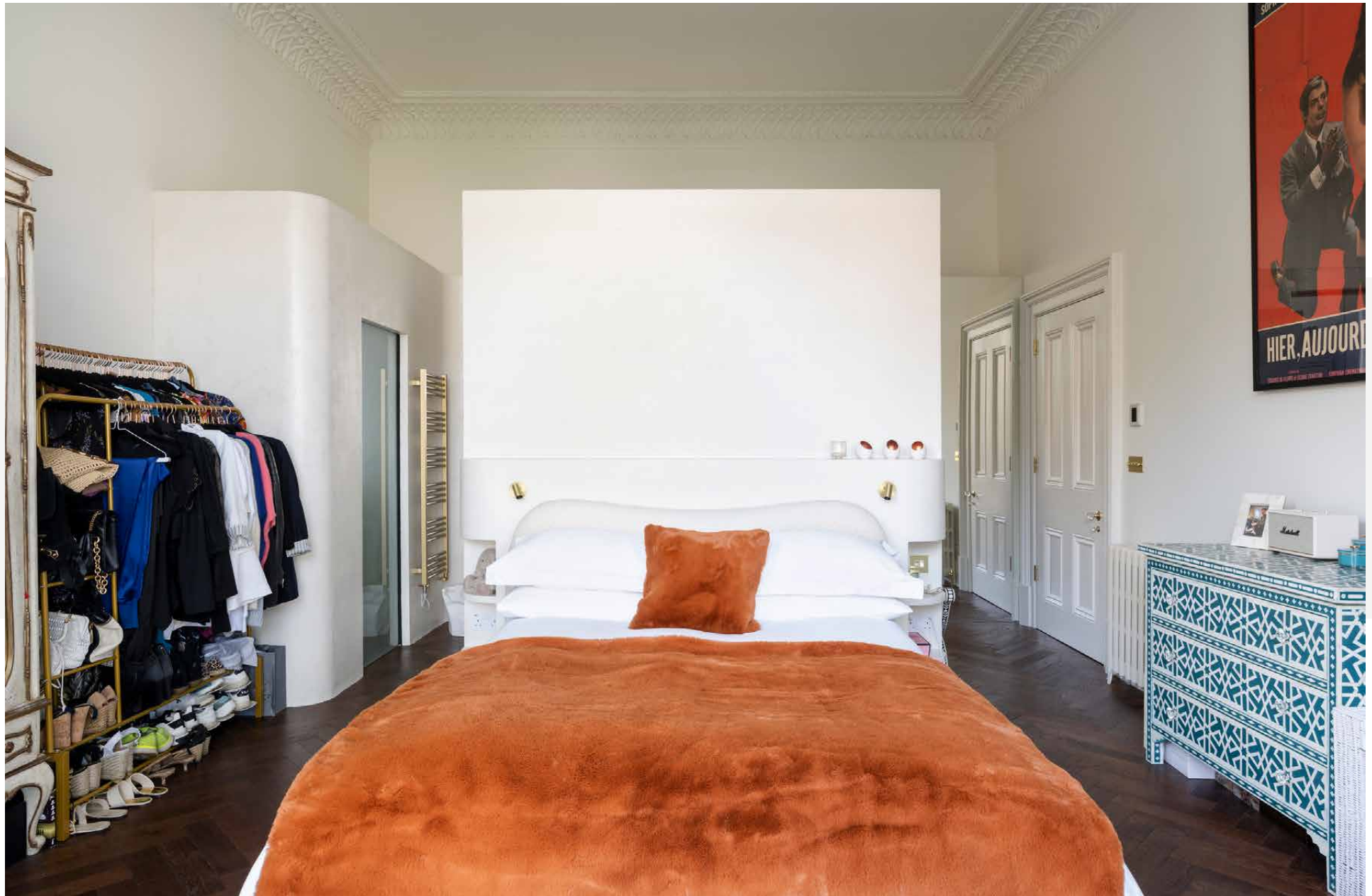


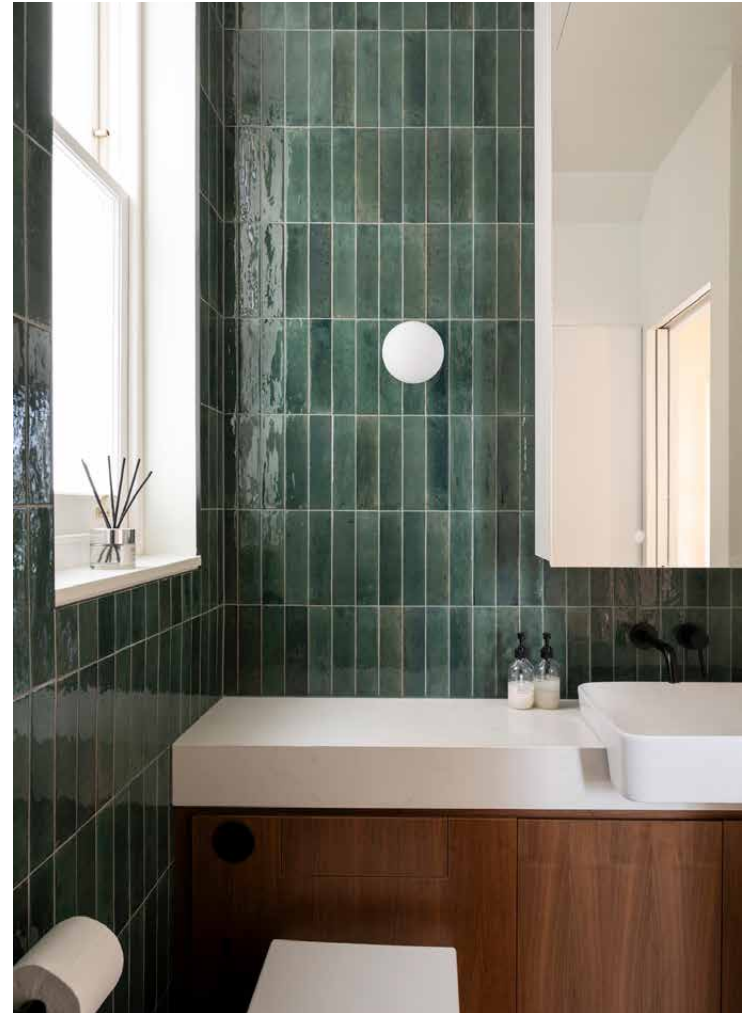
Elegant period architecture ensues in the principal bedroom suite, its tall ceilings accentuated with decorative moulding, plus expansive bay windows that draw in the natural light.

The bed sits against a partition wall, behind which is a modish bathroom area. From the freestanding bathtub to the dual vanity, frosted glass shower door and art deco-inspired wall lights, it's as stylish as it is soothing. A sophisticated shower room serves an inviting guest bedroom, where French doors lead out to a terrace. Cast iron railings lead you down into the shared garden – a peaceful al fresco scene filled with greenery.



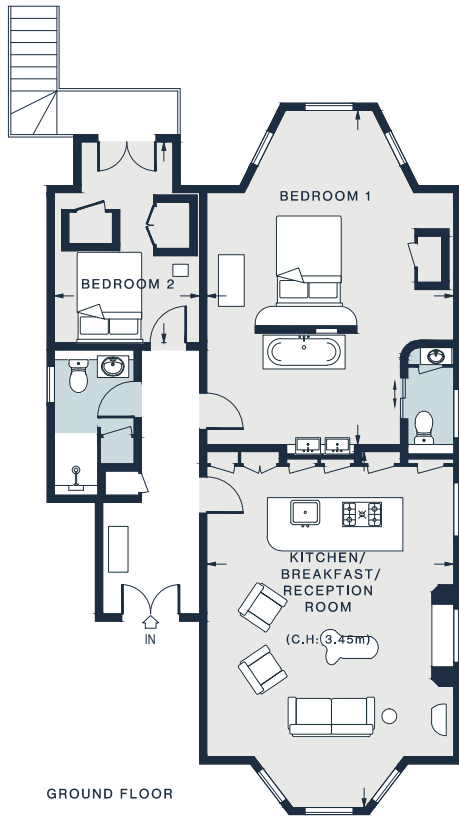












KITCHEN / BREAKFAST /
RECEPTION ROOM
24'1 x 16'6 (7.3m x 5.0m)

BEDROOM 1
22'8 x 16'9 (6.9m x 5.1m)

BEDROOM 2
13'7 x 9'10 (4.1m x 3.0m)

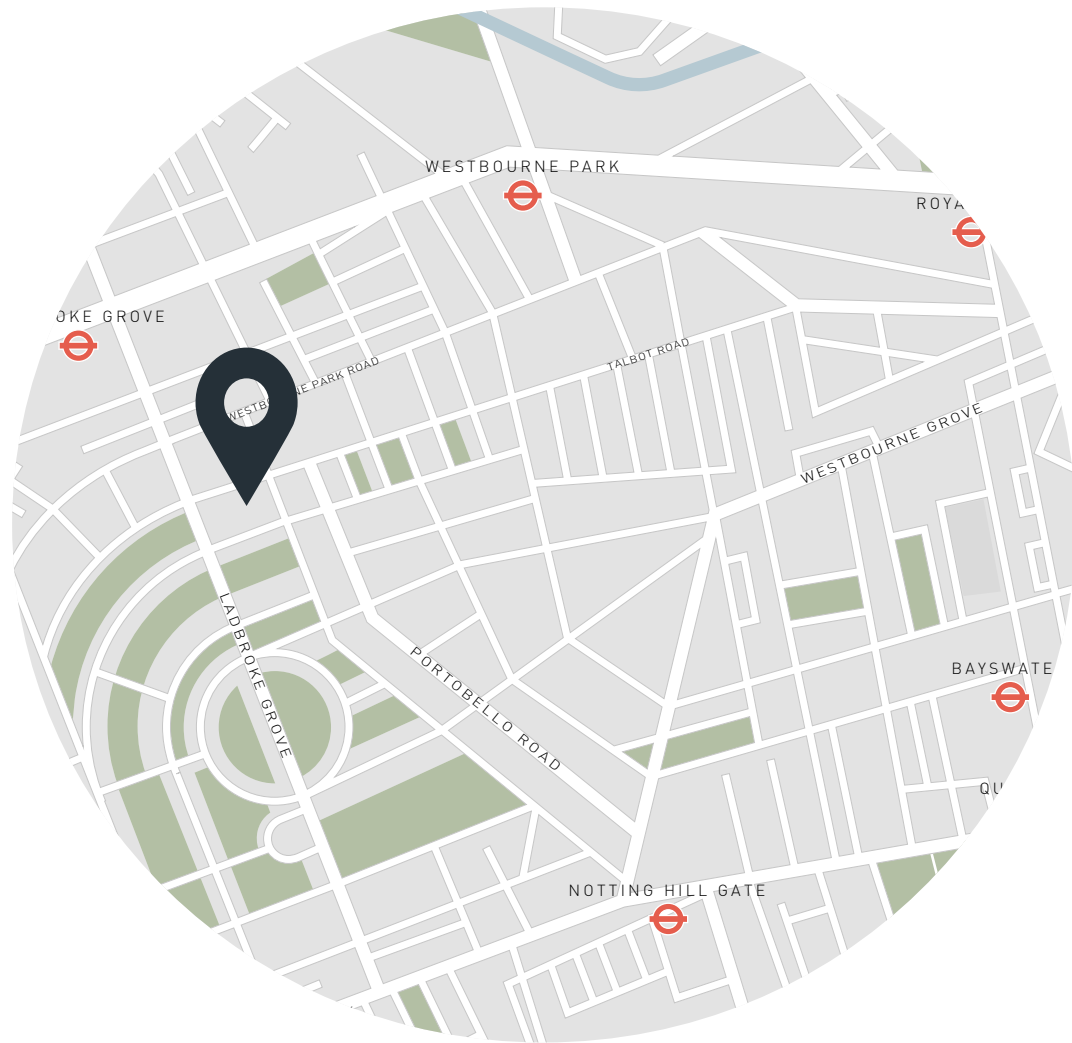
Approx. Gross Internal Area = 1,006 sq ft / 93.5 sq m

Floor plans are for illustrative purposes only and not to scale. Compliant with RICS code of measuring practice.

Property Details

- Open-plan kitchen and reception room
- Principal bedroom suite
- One further bedroom
- One further bathroom
- Private terrace
- Shared garden access
- Royal borough of Kensington & Chelsea

- Approx. 1,006 sq ft / 93.5 sq m
- EPC = C
- Council Tax Band = G
- Deposit = £12,000 (LL & SL)



Location

Elgin Crescent is refined, tranquil and firmly embedded in Notting Hill's gilded neighbourhood. Portobello Road is on your doorstep for antiques shopping and global street food, while Westbourne Grove is lined with brunch spots and upmarket boutiques. When the sun is shining, pick up organic nibbles from Daylesford or Sally Clarke's deli and head to Holland Park. For special occasions, Michelin-starred Core by Clare Smyth promises a night of fine dining.

Westbourne Park - 14 mins (Circle, Hammersmith and City)
Holland Park - 14 mins (Central)

Specialising in London
and Ibiza's design-led homes

Let's talk

020 7727 1717

lettings@domusnova.com

domusnova.com

The property particulars are a guide not statements. Descriptions, photographs, and plans are for guidance and should be checked by the prospective tenant. The Property is offered "subject to contract and references". No warranties, representations, or Tenancy is given by Domus Nova. Expenses incurred by a prospective tenant will not be reimbursed if the Landlord withdraws prior to the Tenancy Agreement being signed, dated and exchanged and cleared funds received. Furniture and other items shown in a property at viewing may belong to a current tenant. The prospective tenant should verify in writing which fixtures and fittings forms part of the Tenancy. Our full lettings disclaimer together with trading names and our [Privacy Policy](#) is shown on our website

© Domus Nova 2024. All rights reserved.