

# DOMUS NOVA

Elgin Crescent

Notting Hill W11

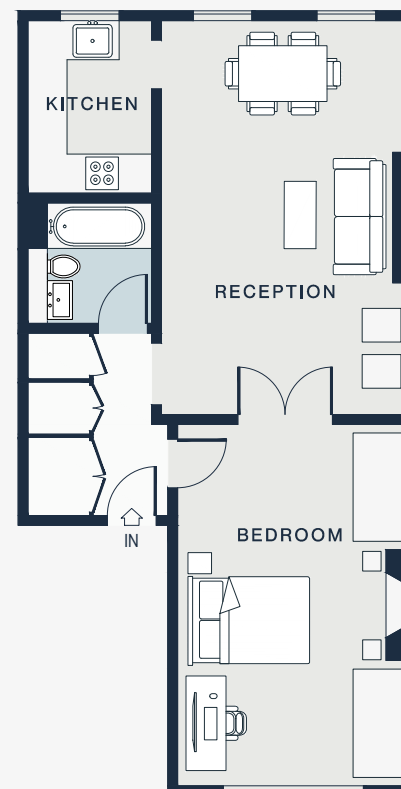
APPROXIMATE GROSS INTERNAL AREA

637 sq ft / 59.2 sq m

020 7221 7817

domusnova.com

LONDON | IBIZA



RECEPTION  
19'11 x 12'6 (6.0m x 3.8m)

KITCHEN  
8'8 x 6'3 (2.6m x 1.9m)

BEDROOM  
18'2 x 11'10 (5.5m x 3.6m)

Approx. Gross Internal Area = 637 sq ft / 59.2 sq m

Floor plans are for illustrative purposes only and not to scale. Compliant with RICS code of measuring practice.