

DOMUS NOVA

Elgin Crescent

Notting Hill W11

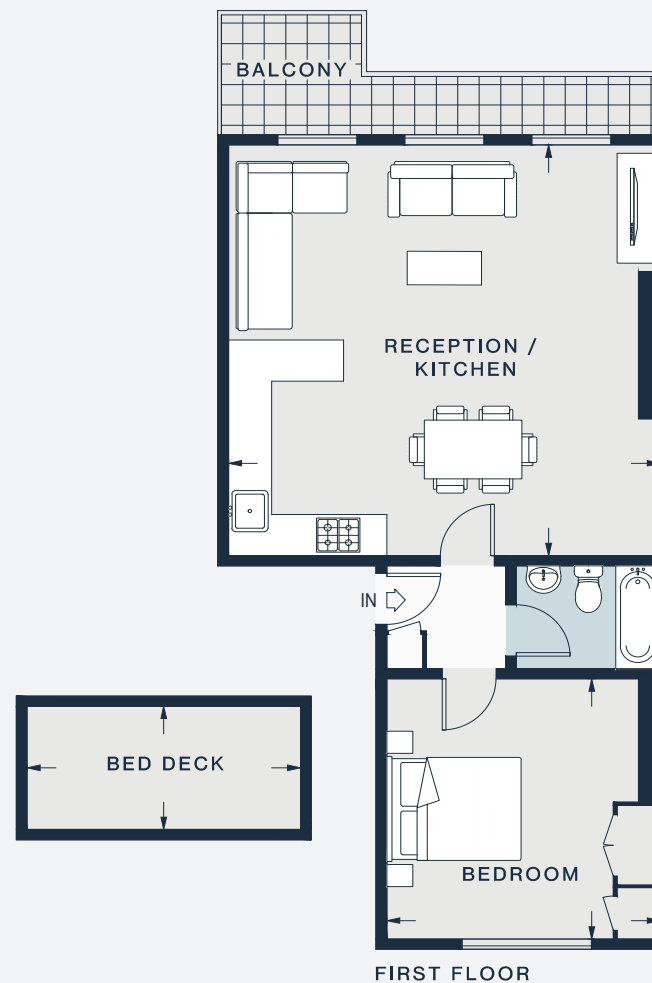
APPROXIMATE GROSS INTERNAL AREA

691 sq ft / 64.2 sq m

020 7727 1717

domusnova.com

LONDON | IBIZA



RECEPTION / KITCHEN

19'9 x 19'8 (6.0m x 6.0m)

BEDROOM

12'8 x 12'6 (3.9m x 3.8m)

BED DECK

12'6 x 5'9 (3.8m x 1.8m)

Approx. Gross Internal Area = 691 sq ft / 64.2 sq m

Floor plans are for illustrative purposes only and not to scale. Compliant with RICS code of measuring practice. Furniture layouts are indicative only. This property may be furnished, part-furnished or unfurnished. Please refer to your agent for details.