

# DOMUS NOVA

Elgin Crescent

Notting Hill W11

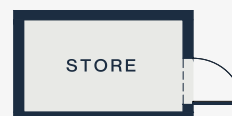
APPROXIMATE GROSS INTERNAL AREA

689 sq ft / 64 sq m

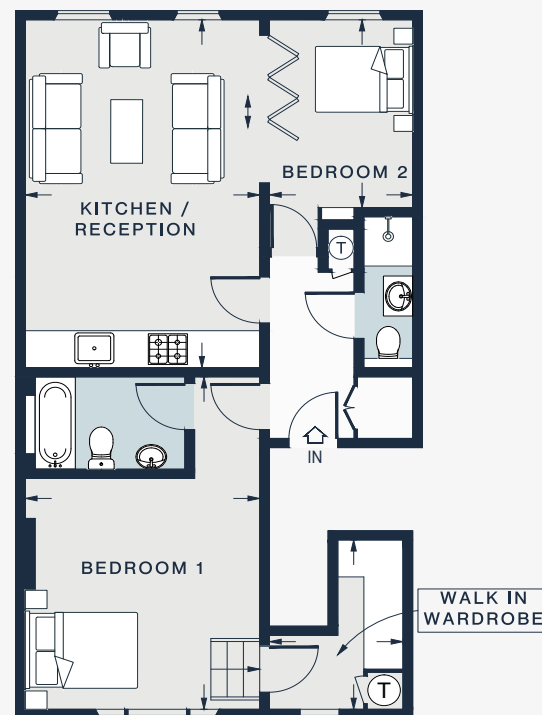
020 7727 1717

domusnova.com

LONDON | IBIZA



MEZZANINE



SECOND FLOOR

KITCHEN / RECEPTION

18'6 x 11'9 (5.6m x 3.5m)

BEDROOM 1

17'8 x 12'0 (5.3m x 3.6m)

BEDROOM 2

10'0 x 7'2 (3.0m x 2.1m)

Approx. Gross Internal Area = 652 sq ft / 60.6 sq m

Mezzanine = 37 sq ft / 3.4 sq m

Total = 689 sq ft / 64 sq m

Floor plans are for illustrative purposes only and not to scale. Compliant with RICS code of measuring practice. Furniture layouts are indicative only. This property may be furnished, part-furnished or unfurnished. Please refer to your agent for details.