

# DOMUS NOVA



Elgin Crescent W11  
£15,000 pw - Short let





On one of Notting Hill's coveted crescents, this five-bedroom house for rent is a gallery of contemporary design.

With its steel-blue hue and stucco frontage, Elgin Crescent makes an eye-catching first impression. Behind its smart portico entrance lies six sprawling floors of architectural and aesthetic finesse. The home opens into a formal reception room, bathed in light through full-height dual-aspect glazing. At one end, two desks make for a sociable working set-up; at the other end find a grand piano, modern fireplace and array of stylish seating. From here, French doors open onto a decked balcony that gazes out to the garden.







A cantilevered staircase descends to the home's social heart — an expansive open-plan kitchen, dining and living room. There's a relaxed mid-century feel to the cabinets and armchairs in the lounge area, which is softly illuminated through a sash window.

The kitchen is stylish and streamlined, centred by a large island. The whitewashed tonal palette lends attention to a quintet of stylised pendant lights that hang above. Beyond here, a glossy wood dining table seats ten. Two large skylights amplify the sense of brightness, while a vast picture window frames views onto the garden. Slide back the glass to reveal a patio, serving as an extension of the interior during warmer months. Paving stretches across the outside space, interspersed with well-manicured greenery and an alfresco dining table.

































Five calming bedrooms are spread across the first, second and third floors, united by a cantilevered staircase with clean-line glass balustrades.

The principal bedroom suite has a relaxed atmosphere, illuminated through a large sash window. Pass through a walk-in wardrobe area to reach the en suite bathroom; pick between the large freestanding tub or oversized dual shower. Two of the four bedrooms also enjoy en suite bathrooms, while a family bathroom serves the remaining spaces. At the top of the home is a skylit mezzanine — a peaceful reading spot, complete with integrated seating in the eaves.



















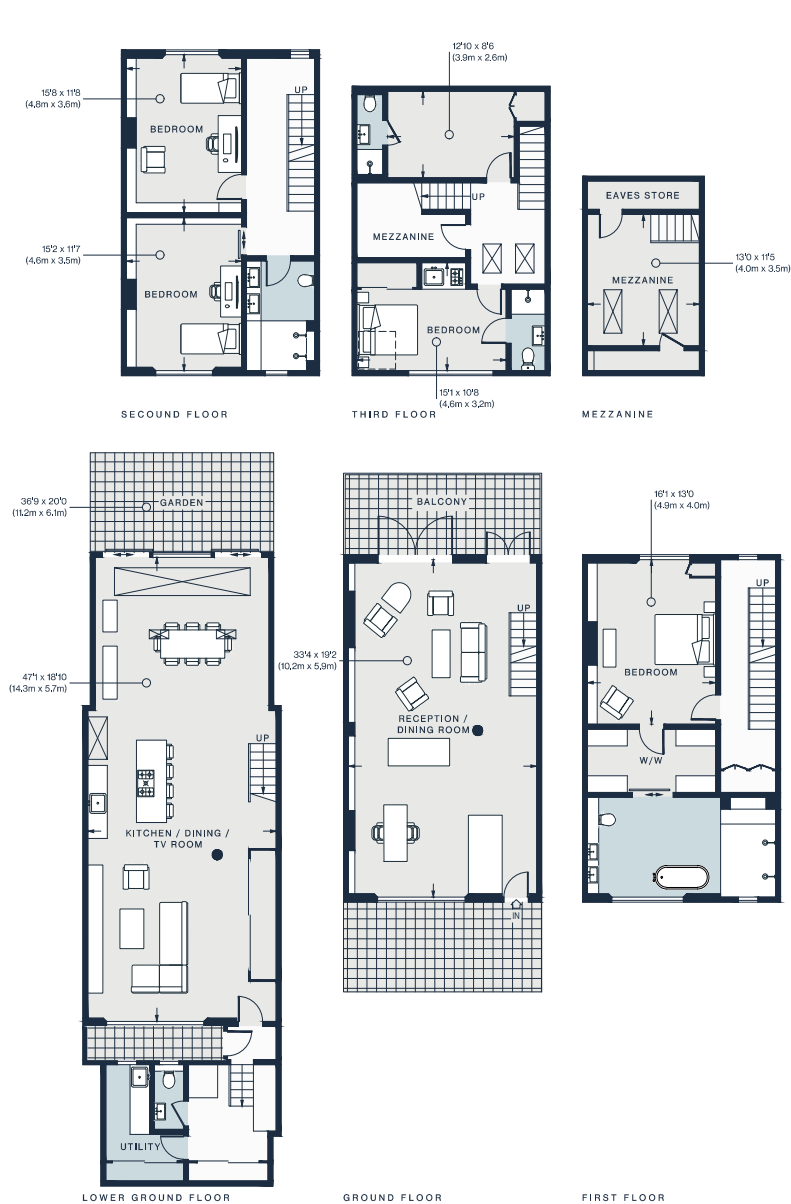












Approx. Gross Internal Area = 3638 sq ft / 338.0 sq m

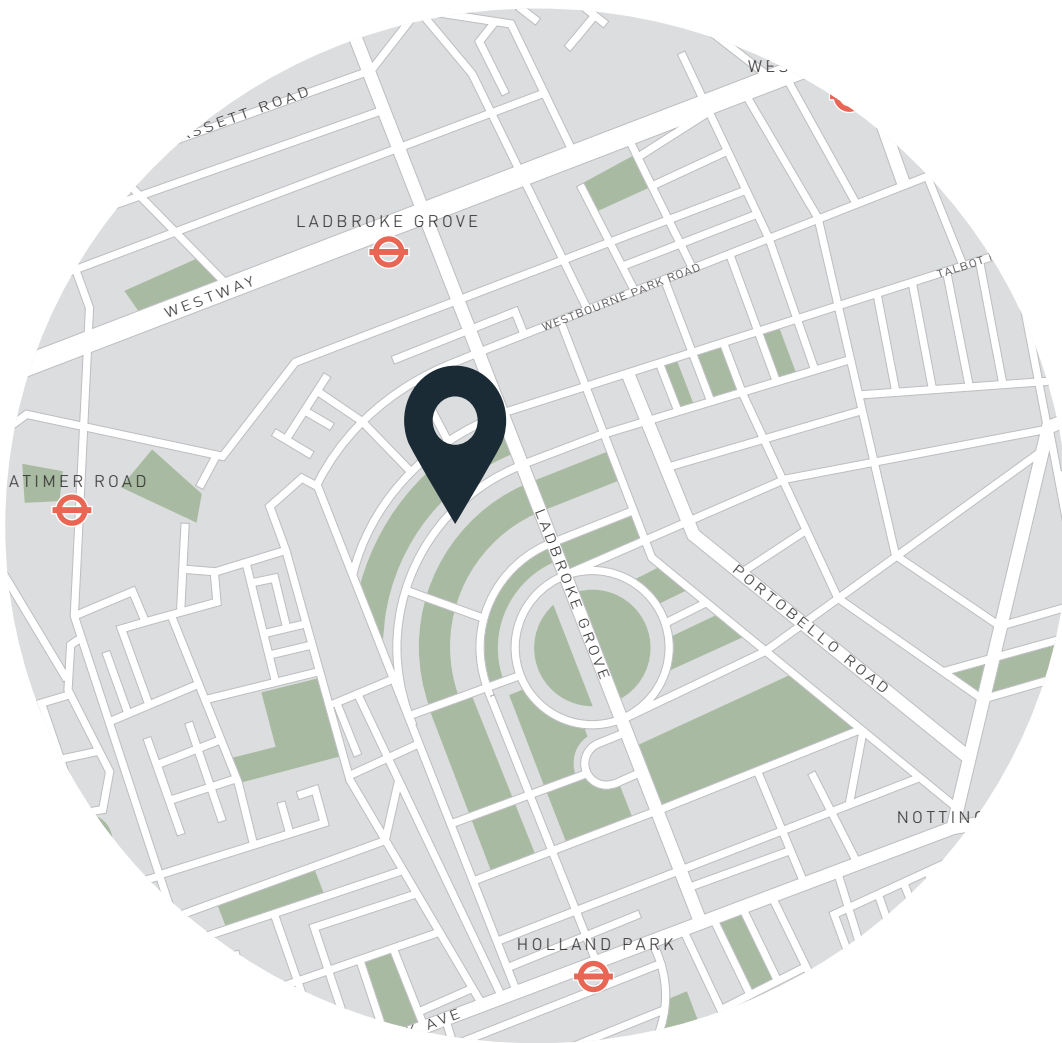
Floor plans are for illustrative purposes only and not to scale. Compliant with RICS code of measuring practice. Furniture layouts are indicative only. This property may be furnished, part-furnished or unfurnished. Please refer to your agent for details.

## Property Details

Formal reception room  
Open-plan kitchen, dining and living room  
Principal bedroom suite with walk-in wardrobe  
Two guest bedroom suites  
Two additional bedrooms  
Family bathroom  
Mezzanine nook  
Utility room  
Eaves storage  
Private garden  
Balcony  
Royal Borough of Kensington & Chelsea

Approx 3,638 sq ft / 338.0 sq m  
EPC - D  
Council Tax Band - H  
Deposit Payable -£60,000





## Location

Caught between Ladbroke Grove and Kensington Park Road, Elgin Crescent is positioned for quintessential Notting Hill living. Coveted eateries such as Gold, Farm Girl and Core are on your doorstep, as is The Grocer on Elgin and Notting Hill Fish & Meat Shop for local produce. Portobello Road and Westbourne Grove offer an eclectic mix of vintage shops and luxury boutiques to refresh your wardrobe. Head to Holland Park for a weekend stroll or the Serpentine Lido for early morning swims.

Ladbroke Grove - 5 mins



Specialising in London  
and Ibiza's design-led homes

Let's talk  
020 7727 1717  
lettings@domusnova.com  
domusnova.com

The property particulars are a guide not statements. Descriptions, photographs, and plans are for guidance and should be checked by the prospective tenant. The Property is offered "subject to contract and references". No warranties, representations, or Tenancy is given by Domus Nova. Expenses incurred by a prospective tenant will not be reimbursed if the Landlord withdraws prior to the Tenancy Agreement being signed, dated and exchanged and cleared funds received. Furniture and other items shown in a property at viewing may belong to a current tenant. The prospective tenant should verify in writing which fixtures and fittings forms part of the Tenancy. Our full lettings disclaimer together with trading names and our [Privacy Policy](#) is shown on our website