

DOMUS NOVA

Elgin Avenue

Little Venice W9

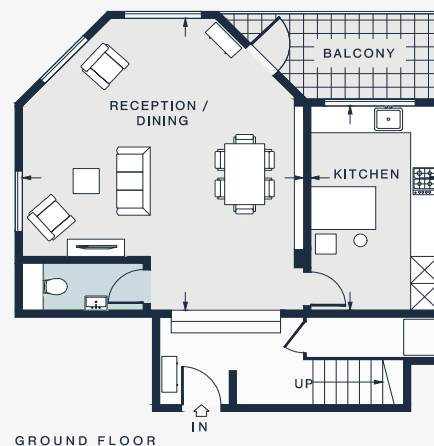
APPROXIMATE GROSS INTERNAL AREA

1,316 sq ft / 122.3 sq m

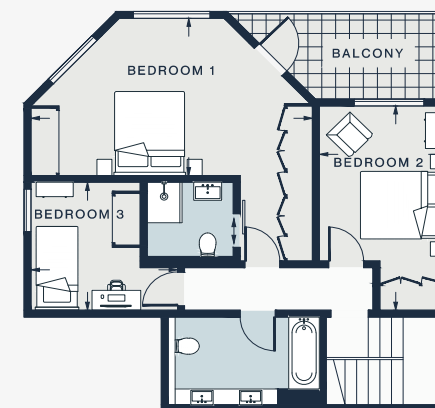
020 7727 1717

domusnova.com

LONDON | IBIZA



GROUND FLOOR



FIRST FLOOR

RECEPTION / DINING

21'3 x 19'10 (6.4m x 6.0m)

KITCHEN

14'11 x 9'1 (4.5m x 2.7m)

BEDROOM 1

19'10 x 11'4 (6.0m x 3.4m)

BEDROOM 2

14'10 x 9'2 (4.5m x 2.8m)

BEDROOM 3

10'4 x 9'5 (3.1m x 2.8m)

Approx. Gross Internal Area = 1315 sq ft / 122.2 sq m

Floor plans are for illustrative purposes only and not to scale. Compliant with RICS code of measuring practice. Furniture layouts are indicative only. This property may be furnished, part-furnished or unfurnished. Please refer to your agent for details.