

# DOMUS NOVA



Eaton Square, SW1W – £8,000 p/w (SL)

In partnership with **BARNES**  
INTERNATIONAL REALTY



Set within the distinguished stucco-fronted terraces of Eaton Square, this three-bedroom apartment captures the quiet grandeur of one of Belgravia's most coveted addresses. With sophisticated design by Finchatton, the home balances heritage detailing with contemporary clarity across the ground and lower-ground floors. Expect a considered material palette, bespoke craftsmanship and integrated technology – including comfort cooling and heating throughout.

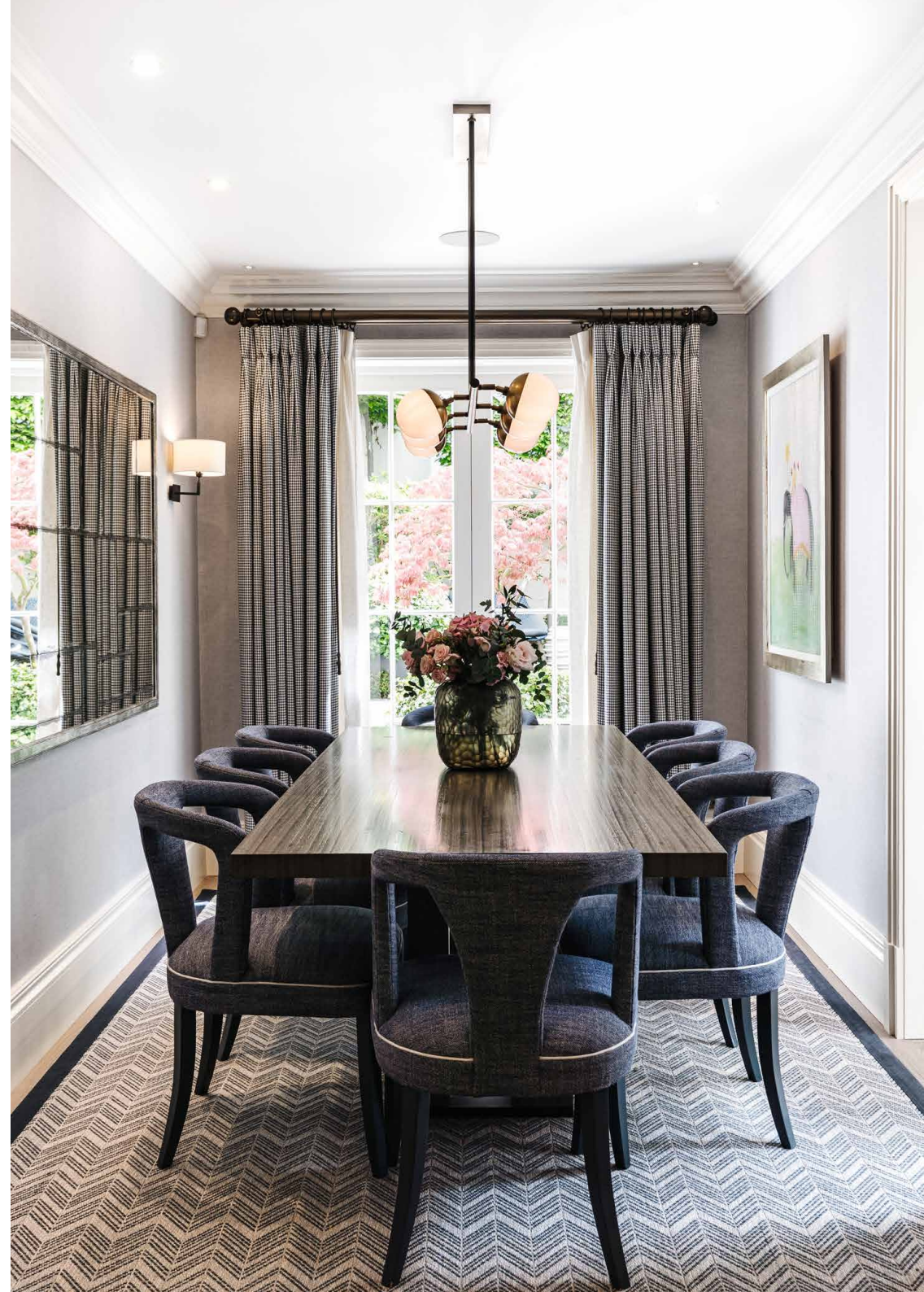
Outside, ornate porticos, wrought-iron railings and pristine façades speak to the area's esteemed period heritage – a refinement continued as you enter the home. The reception room is an elegant affair, crafted with bespoke joinery, sleek furniture and sculptural lighting. A television and the bold marble fireplace, complete with a remote-controlled gas fire, form a cosy focal point. Beyond, French doors draw in reams of natural light and open directly onto the garden.





In the kitchen, clean-lined cabinetry, Neolith surfaces, chrome tapware and antique brass ironmongery have a sleek, streamlined feel – complemented by a range of high-spec integrated Miele appliances. The adjacent dining area is centred by a wood table and upholstered chairs. As in the living room, French doors similarly extend the space outdoors.

Tailor-made for warm-weather gatherings, the landscaped garden is a tranquil al fresco setting. Ceramic tiling is softened by mature planting and verdant trees; lighting is neatly integrated into the design, casting a warm glow as evening draws in. Residents can also enjoy access to the award-winning Eaton Square Gardens – with blooming borders, water features and shaded pathways.











The principal bedroom suite is a calm, light-filled retreat. Soft wool carpets run underfoot, while full-height glazing opens onto a private terrace. A bespoke dressing room sits to one side; to the other, an en suite bathroom finished in book-matched marble, complete with a walk-in shower. Two further bedrooms are equally considered. One enjoys its own en suite, while the third offers direct access to the terrace. A further bathroom serves these spaces

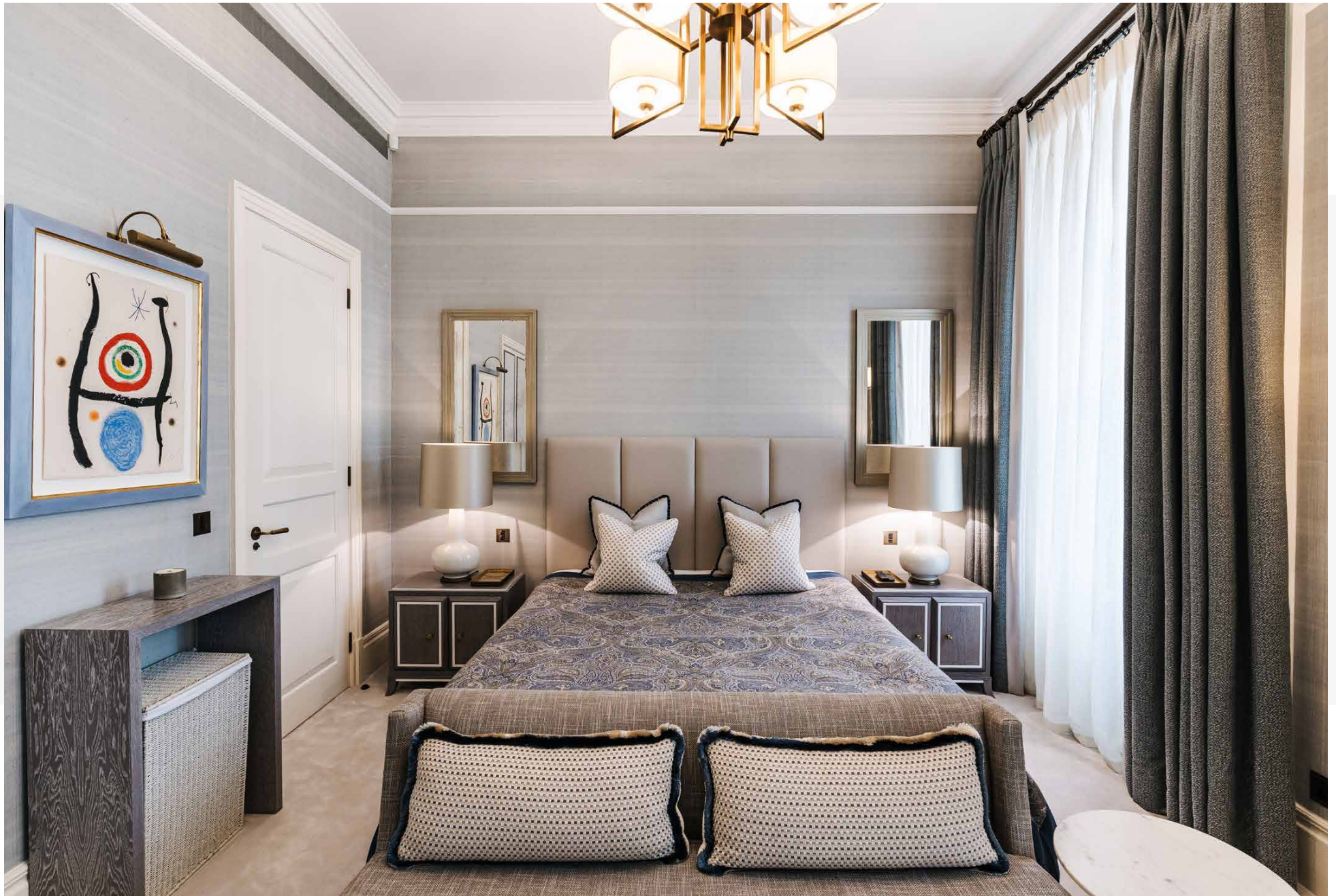


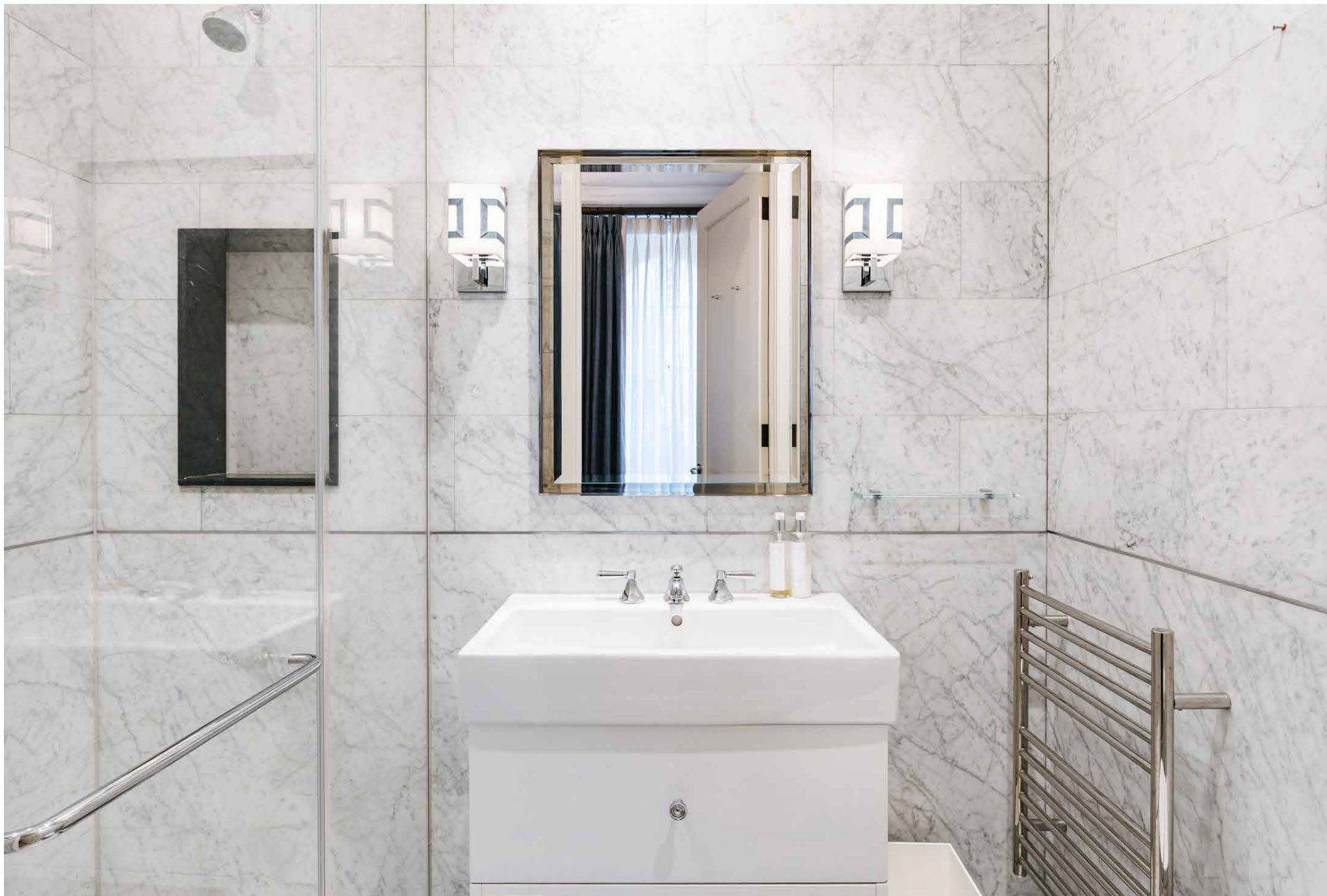


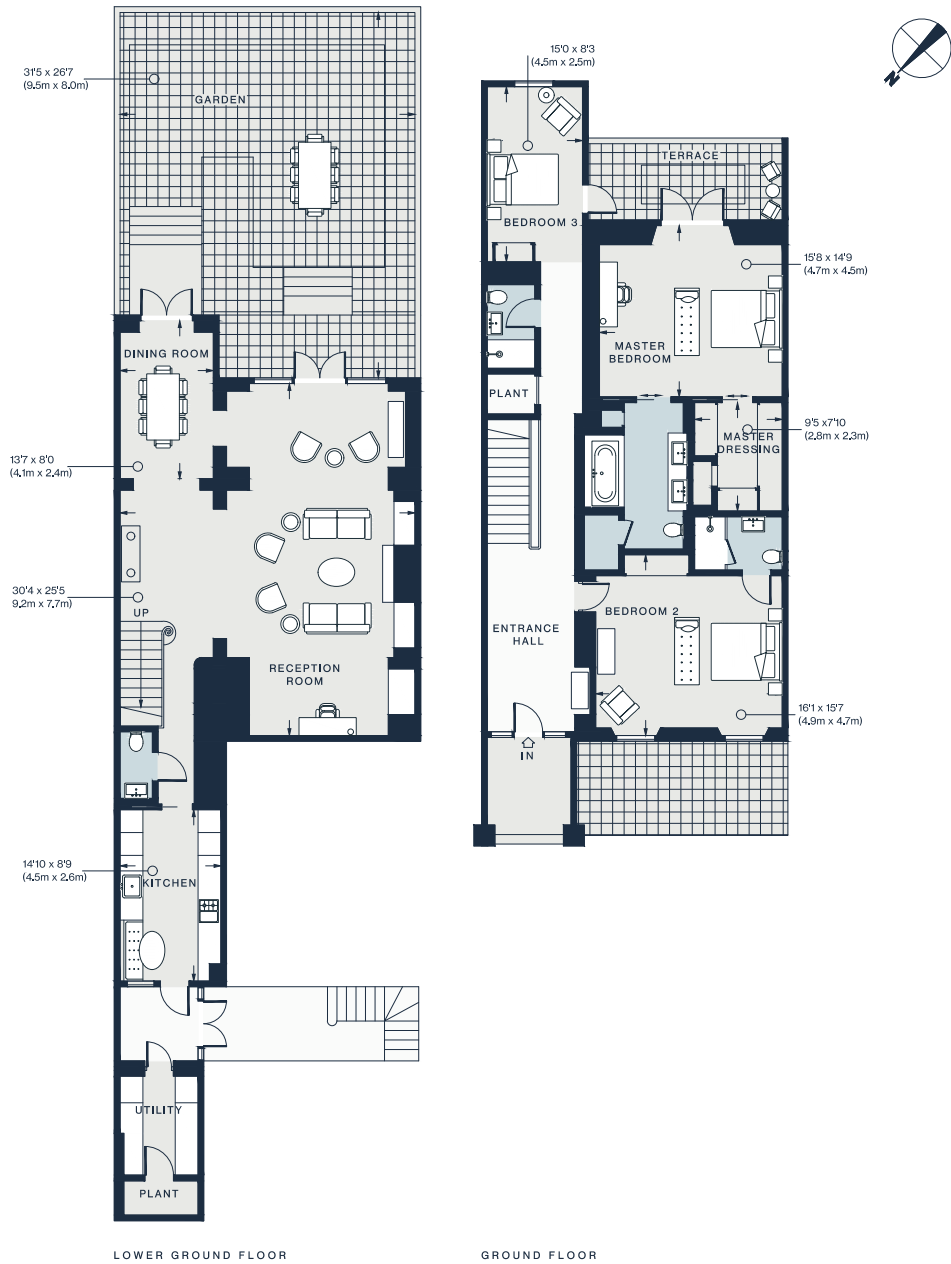












Approx. Gross Internal Area = 2256 sq ft / 210 sq m

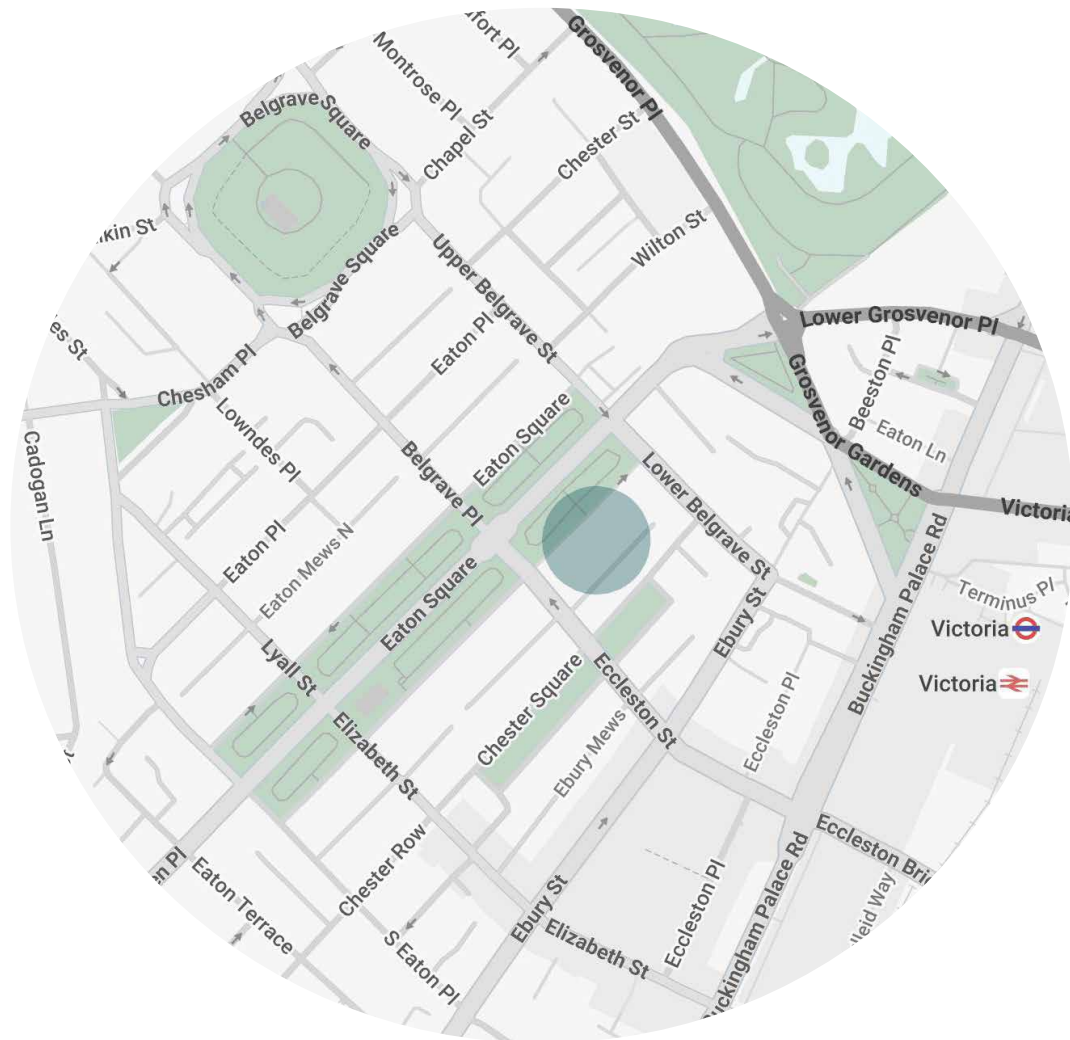
## Property Details

- 4 Bedrooms, 3 Bathrooms
- Spacious double reception room
- Open-plan kitchen, dining and living room
- Master bedroom suite
- Three additional bedrooms
- Two family bathrooms
- Private patio garden and terrace
- Off-street parking
- City of Westminster

Approx. 2,256 sq ft / 210 sq m EPC=E

Deposit: £18,460

Council Tax Band: H



## Location

Bordered by Victoria, Knightsbridge and Chelsea, Eaton Square is a springboard to some of London's most well-heeled spots. Start your morning on village-like Elizabeth Street with a coffee from Tomtom, stopping by Chestnut Bakery and Bayley & Sage to source organic produce. Head to the King's Road for an abundance of retail offerings, followed by an art-filled afternoon at the Saatchi Gallery. During springtime, the streets bloom for the infamous FHS Chelsea Flower Show. There are fine dining options aplenty, from La Poule au Pot to Hunan, Pétrus by Gordon Ramsay and The Harwood Arms – London's only Michelin-starred pub. Plus, Victoria Station is nearby, giving you easy access across the rest of the capital.

Victoria - 6 mins (Circle, District and Victoria lines)  
 Sloane Square - 15 mins (Circle, District)



# Who ——— we are

Forward-thinkers in property, design and culture, we're an estate agency that hits refresh.

Domus Nova was born out of a desire to do things differently; to break the traditional agency model and focus on design-led homes in London and Ibiza, all while delivering the highest levels of personal service.

Our story starts in the nineties when we founded Notting Hill's first boutique agency – and we continue to open the doors to the most remarkable spaces, revealing them to our like-minded community.

We want to help you live better – and believe considered design can do that. That's why we remain committed to building on our legacy, in collaboration with BARNES International, an established agency with a market-leading presence in 22 countries.

Uniting our local insight and curated portfolio with BARNES International's expansive reach, we can facilitate the best opportunities in not only London and Ibiza, but also across Europe, the US and further afield – whether that's a château in the South of France, a penthouse in New York, or a chalet in the Swiss Alps.



# DOMUS NOVA

Specialising in London  
and Ibiza's design-led homes

Let's talk

020 7727 1717

[lettings@domusnova.com](mailto:lettings@domusnova.com)

---

The property particulars are a guide not statements. Descriptions, photographs, and plans are for guidance and should be checked by the prospective tenant. The Property is offered "subject to contract and references". No warranties, representations, or Tenancy is given by Domus Nova. Expenses incurred by a prospective tenant will not be reimbursed if the Landlord withdraws prior to the Tenancy Agreement being signed, dated and exchanged and cleared funds received. Furniture and other items shown in a property at viewing may belong to a current tenant. The prospective tenant should verify in writing which fixtures and fittings forms part of the Tenancy. Our full lettings disclaimer together with trading names and our [Privacy Policy](#) is shown on our website

© 2025 Domus Nova in partnership with BARNES International. All rights reserved.

*In partnership with*  
**BARNES**  
INTERNATIONAL REALTY