

DOMUS NOVA

Durham Terrace

Westminster W2

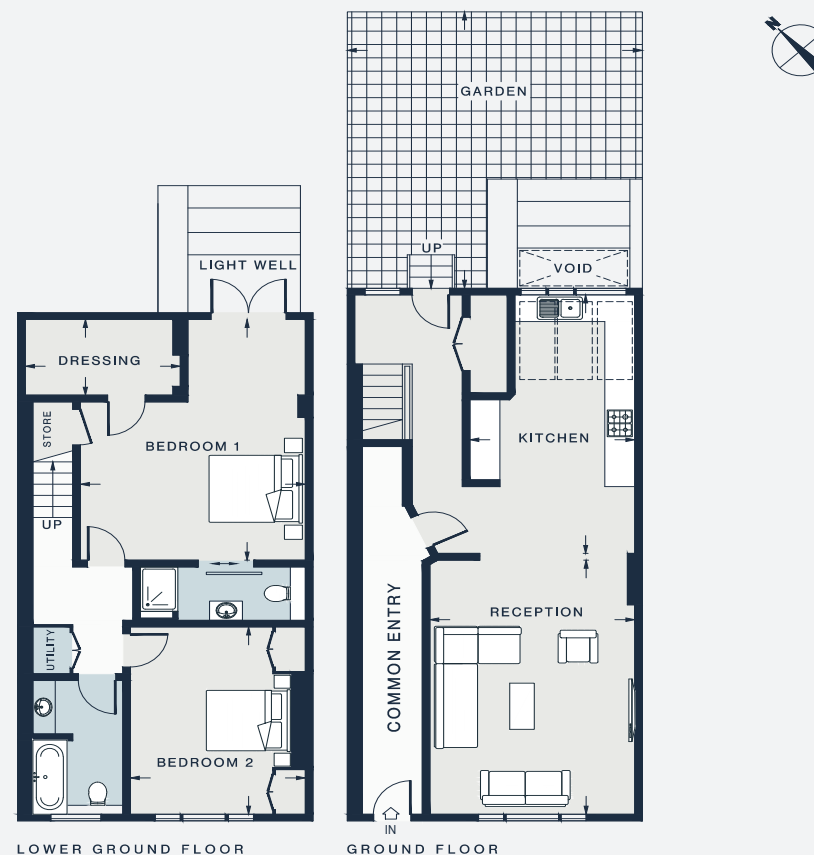
APPROXIMATE GROSS INTERNAL AREA

1203 sq ft / 111.8 sq m

020 7727 1717

domusnova.com

LONDON | IBIZA



RECEPTION 18'8 x 13'6 (5.7m x 4.1m)	BEDROOM 1 17'10 x 14'10 (5.4m x 4.5m)	BEDROOM 2 13'10 x 11'7 (4.2m x 3.5m)
KITCHEN 18'11 x 10'10 (5.8m x 3.3m)	DRESSING ROOM 10'3 x 5'5 (3.1m x 1.7m)	GARDEN 20'4 x 19'0 (6.2m x 5.8m)

Approx. Gross Internal Area = 1,203 sq ft / 111.8 sq m

Floor plans are for illustrative purposes only and not to scale. Compliant with RICS code of measuring practice. Furniture layouts are indicative only. This property may be furnished, part-furnished or unfurnished. Please refer to your agent for details.