

DOMUS NOVA

Durham Terrace

Notting Hill W2

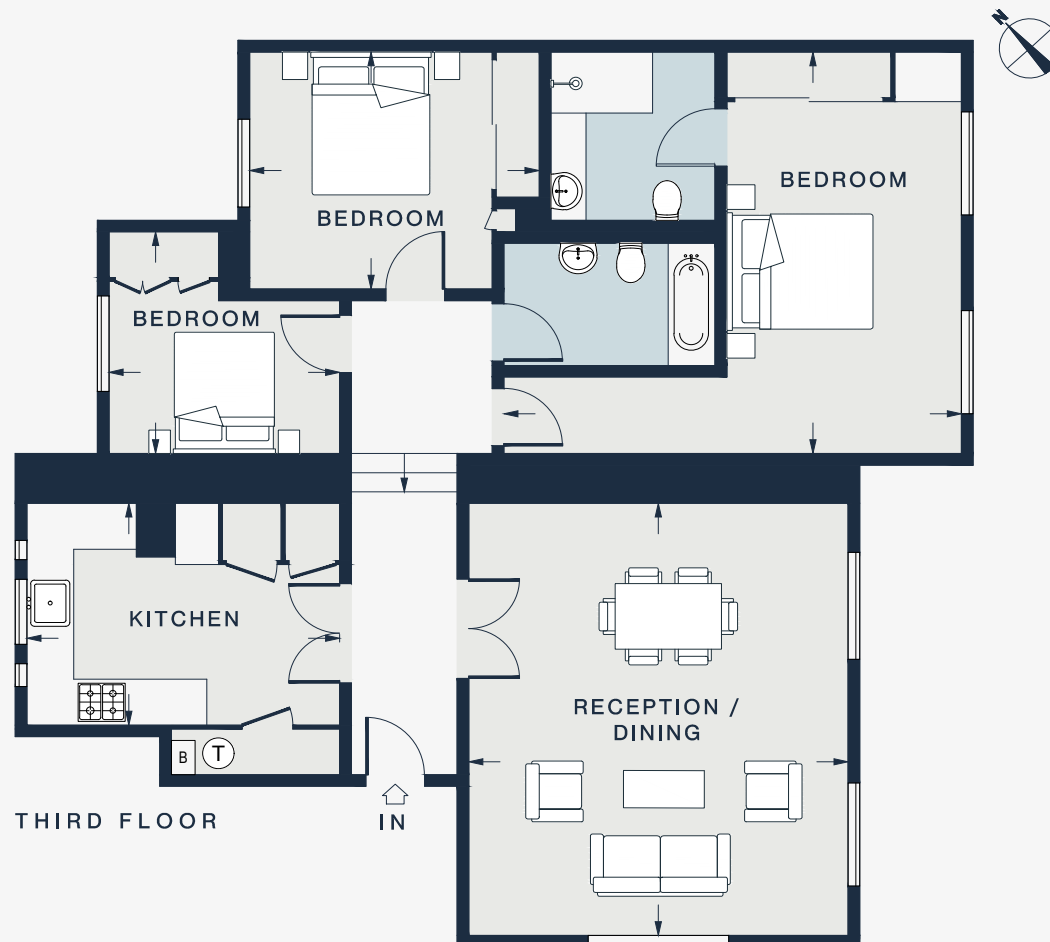
APPROXIMATE GROSS INTERNAL AREA

1,154 sq ft / 107.21 sq m

020 7727 1717

domusnova.com

LONDON | IBIZA



RECEPTION / DINING
18'7 x 15'11 (5.6m x 4.8m)

KITCHEN
13'2 x 9'6 (4.0m x 2.9m)

BEDROOM
9'8 x 9'6 (2.9m x 2.9m)

BEDROOM
12'1 x 10'3 (3.6m x 3.1m)

BEDROOM
19'3 x 17'3 (5.8m x 5.2m)

Approx. Gross Internal Area = 1,154 sq ft / 107.21 sq m

Floor plans are for illustrative purposes only and not to scale. Compliant with RICS code of measuring practice. Furniture layouts are indicative only. This property may be furnished, part-furnished or unfurnished. Please refer to your agent for details.