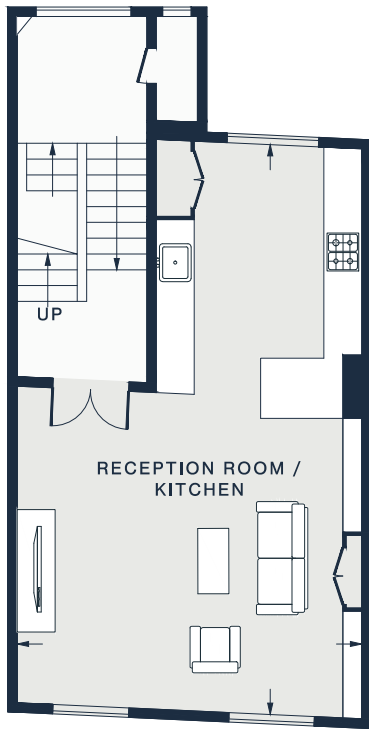
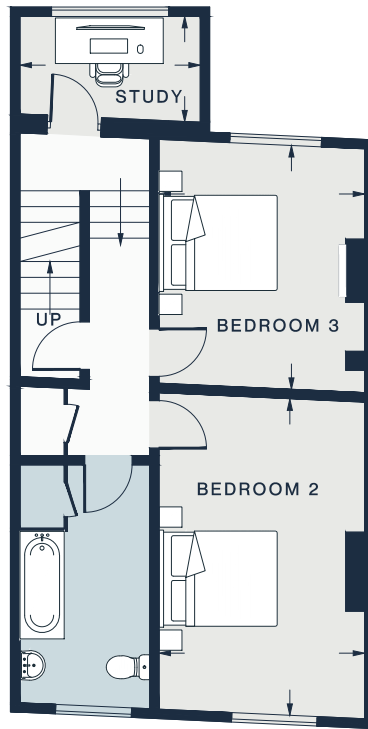


FIRST FLOOR

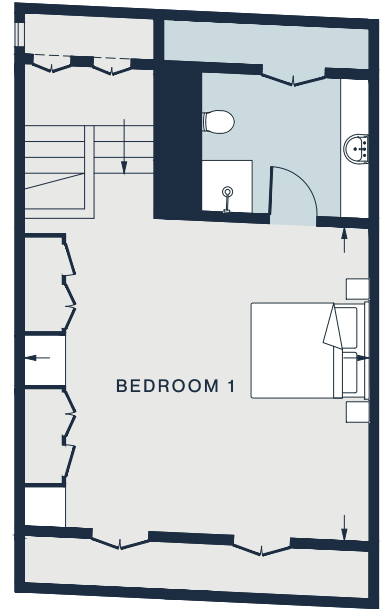


SECOND FLOOR



THIRD FLOOR

 = REDUCED HEAD HEIGHT BELOW 1.5m



FOURTH FLOOR

RECEPTION ROOM / KITCHEN

29'6 x 17'9 (8.9m x 5.4m)

STUDY

9'4 x 4'7 (2.8m x 1.4m)

BEDROOM 1

18'0 x 16'3 (5.4m x 4.9m)

BEDROOM 2

16'5 x 10'8 (5.0m x 3.2m)

BEDROOM 3

12'7 x 10'8 (3.8m x 3.2m)

Approx. Gross Internal Area = 1,795 sq ft / 166.8 sq m

Floor plans are for illustrative purposes only and not to scale. Compliant with RICS code of measuring practice. Furniture layouts are indicative only. This property may be furnished, part-furnished or unfurnished. Please refer to your agent for details.