

DOMUS NOVA



Dunmore Road NW6 – £3,000 p/w (SL)

In partnership with **BARNES**
INTERNATIONAL REALTY



Behind its traditional brick façade, this three-bedroom family home pairs period character with a thoughtful contemporary design palette. Step inside to a bright double reception room, where a bay window floods the space with natural light. Arranged as both living and dining areas, it's perfectly suited to everything from relaxed evenings to entertaining guests.

Wooden flooring and original cornicing lend a sense of elegance, while the open, sociable layout creates an inviting atmosphere throughout. At the rear, French doors draw the eye towards the garden and allow light to filter deep into the room.

Beyond, the open-plan kitchen balances warmth and functionality. Wooden cabinetry is complemented by stainless-steel worktops, while bi-fold windows open directly onto the private garden. Framed by lush planting, the outdoor space offers a peaceful setting for unwinding in the warmer months.







A mood-enhancing palette of colours energises this three-bedroom family home for rent, set in the neighbourly heart of Queen's Park.







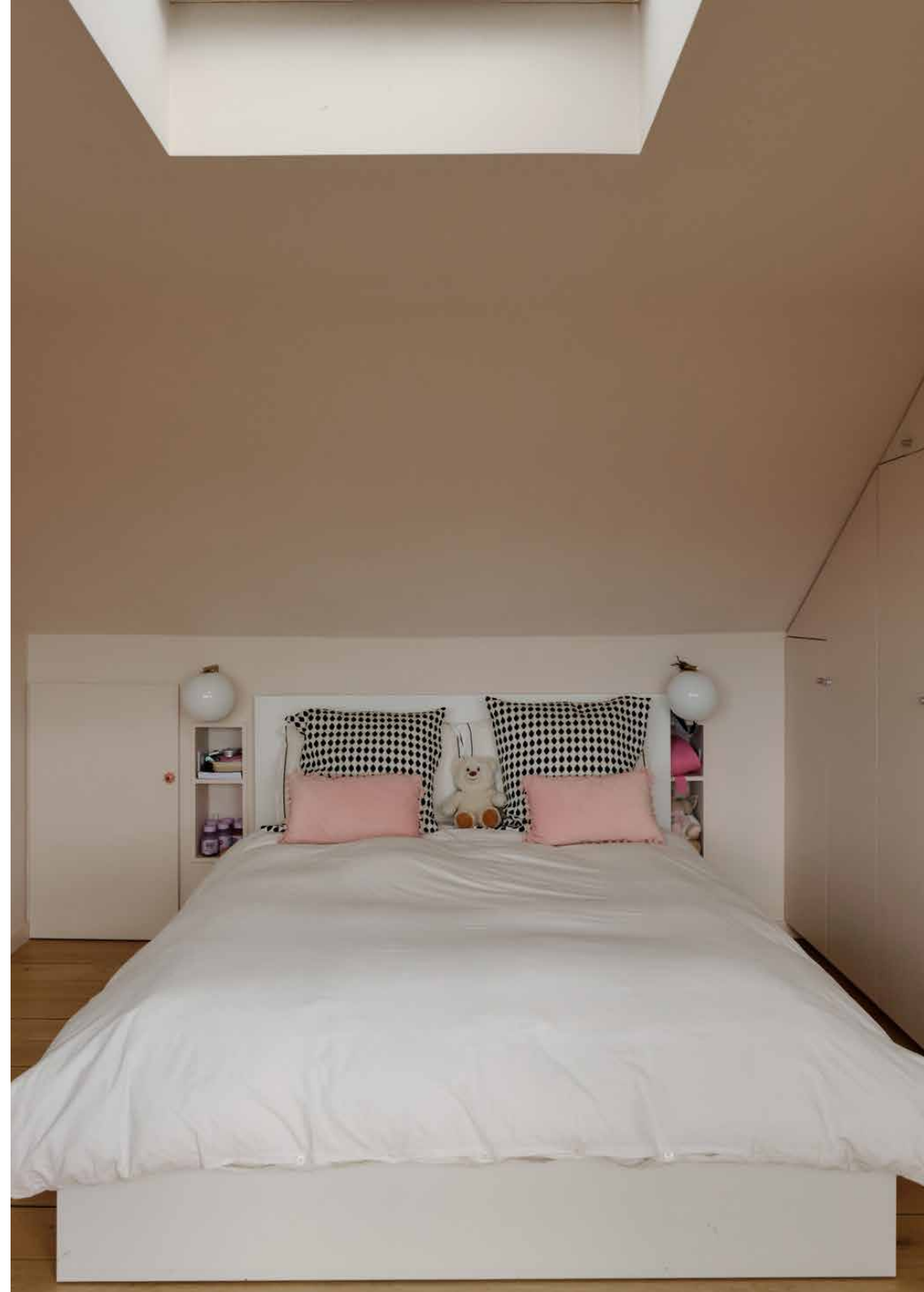




Upstairs, the principal suite is a calming retreat defined by natural textures and soft, earthy tones. Parquet flooring and wood-panelling bring character, while a generous dressing room features a wall of floor-to-ceiling wardrobes and a bay window that fills the space with daylight. The en suite bathroom is particularly striking, finished in pink-toned marble. A freestanding green basin, floating vanity and brass fittings add a playful yet refined finishing touch.

Along the landing, a guest bedroom offers a more understated aesthetic, enlivened by raspberry-toned cabinetry. A family bathroom, finished in whitewashed mosaic tiles, serves this floor.

Occupying the second floor, the final bedroom feels both cosy and airy. Timber floors add warmth, while three sash windows and an overhead skylight bring in an abundance of natural light. Cleverly integrated storage follows the line of the vaulted ceiling, painted in a soft blush pink. Continuing the home's confident approach to colour and design, the en suite bathroom makes an impression with jade-green metro tiles and a generous rainfall shower.



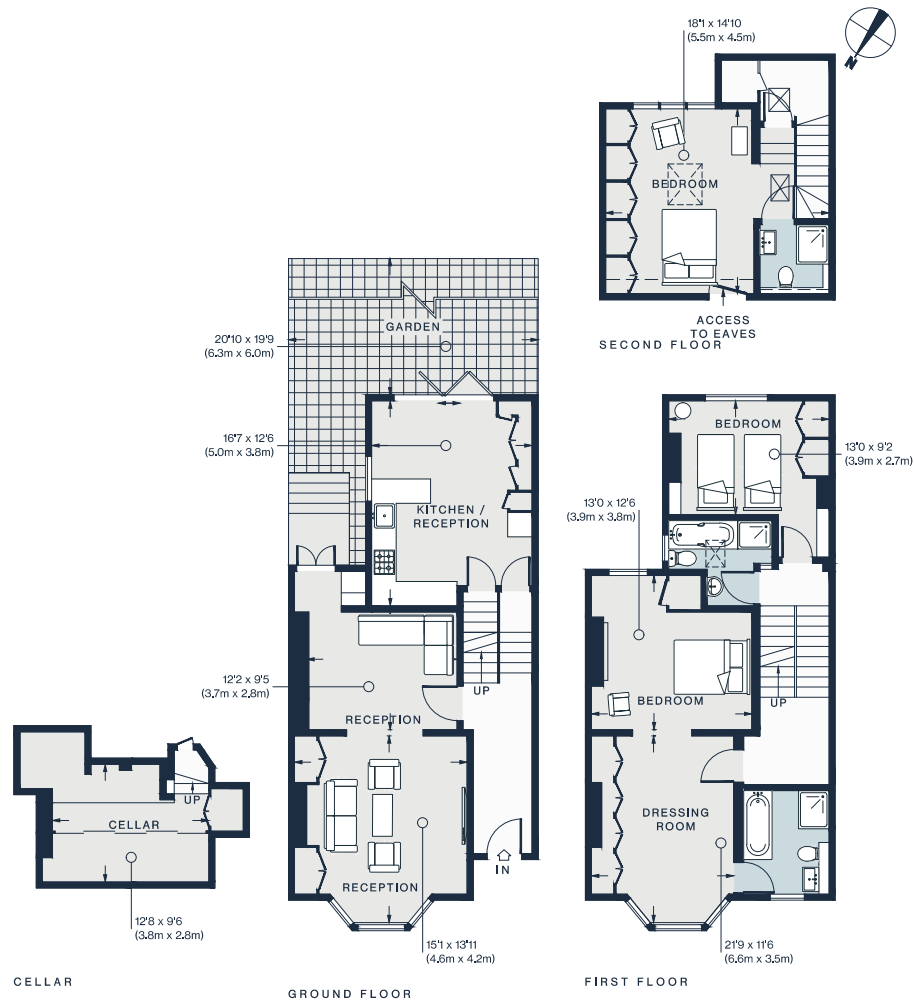












Approx. Gross Internal Area = 1,825 sq ft / 169.6 sq m

Floor plans are for illustrative purposes only and not to scale. Compliant with RICS code of measuring practice. Furniture layouts are indicative only. This property may be furnished, part-furnished or unfurnished. Please refer to your agent for details.

Property Details

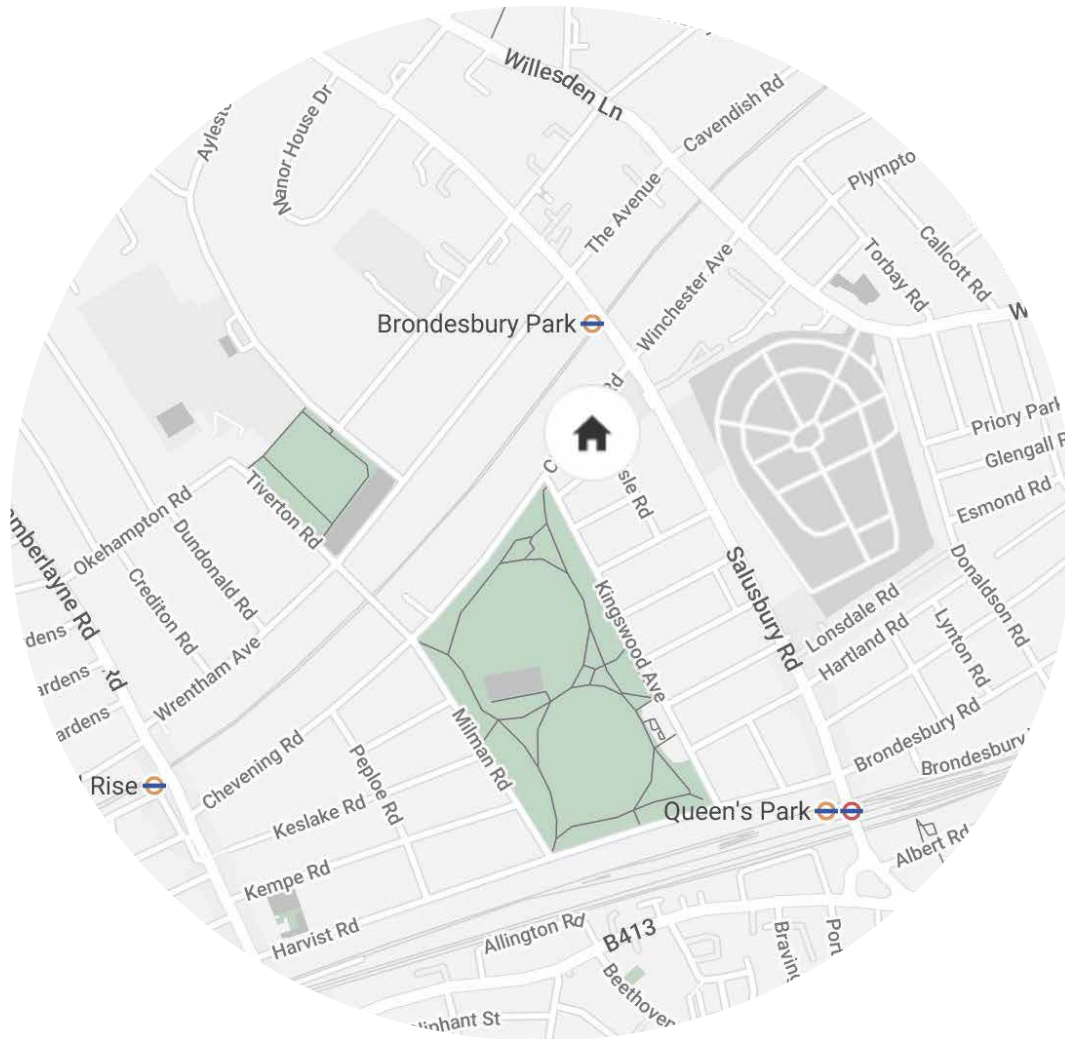
- 3 Bedrooms, 3 Bathrooms
- Double reception room
- Open-plan kitchen
- Principal bedroom suite with dressing room
- Two additional bedrooms
- Family bathroom
- Additional shower room
- Private garden
- Cellar
- London Borough of Brent

Approx 1,825 sq ft / 169.6 sq m

EPC=D

Deposit: £12,000

Council Tax Band: F



Location

A hub for creatives, commuters and families, Queen's Park is a neighbourhood brimming with eclectic eateries and a keen sense of community. The eponymous Queen's Park is on your doorstep, complete with tennis courts and a petting zoo. On Sunday mornings, head to the Farmers' Market to pick up local produce. Just around the corner is Chamberlayne Road, once coined London's 'hippest street' by Vogue where local favourites include Wildcard. Kensal Green Cemetery takes its cue from Père Lachaise in Paris – an atmospheric backdrop for your morning stroll, as is the adjoining Grand Union Canal. Spend an evening at The Lexi, the much-loved independent cinema.

Queen's Park (10 mins)

Kensal Rise (13 mins)



Who ——— we are

Forward-thinkers in property, design and culture, we're an estate agency that hits refresh.

Domus Nova was born out of a desire to do things differently; to break the traditional agency model and focus on design-led homes in London and Ibiza, all while delivering the highest levels of personal service.

Our story starts in the nineties when we founded Notting Hill's first boutique agency – and we continue to open the doors to the most remarkable spaces, revealing them to our like-minded community.

We want to help you live better – and believe considered design can do that. That's why we remain committed to building on our legacy, in collaboration with BARNES International, an established agency with a market-leading presence in 22 countries.

Uniting our local insight and curated portfolio with BARNES International's expansive reach, we can facilitate the best opportunities in not only London and Ibiza, but also across Europe, the US and further afield – whether that's a château in the South of France, a penthouse in New York, or a chalet in the Swiss Alps.



DOMUS NOVA

Specialising in London
and Ibiza's design-led homes

Let's talk

020 7727 1717

lettings@domusnova.com

The property particulars are a guide not statements. Descriptions, photographs, and plans are for guidance and should be checked by the prospective tenant. The Property is offered "subject to contract and references". No warranties, representations, or Tenancy is given by Domus Nova. Expenses incurred by a prospective tenant will not be reimbursed if the Landlord withdraws prior to the Tenancy Agreement being signed, dated and exchanged and cleared funds received. Furniture and other items shown in a property at viewing may belong to a current tenant. The prospective tenant should verify in writing which fixtures and fittings forms part of the Tenancy. Our full lettings disclaimer together with trading names and our [Privacy Policy](#) is shown on our website

© 2025 Domus Nova in partnership with BARNES International. All rights reserved.

In partnership with
BARNES
INTERNATIONAL REALTY