

# DOMUS NOVA

Denbigh Close

Notting Hill W11

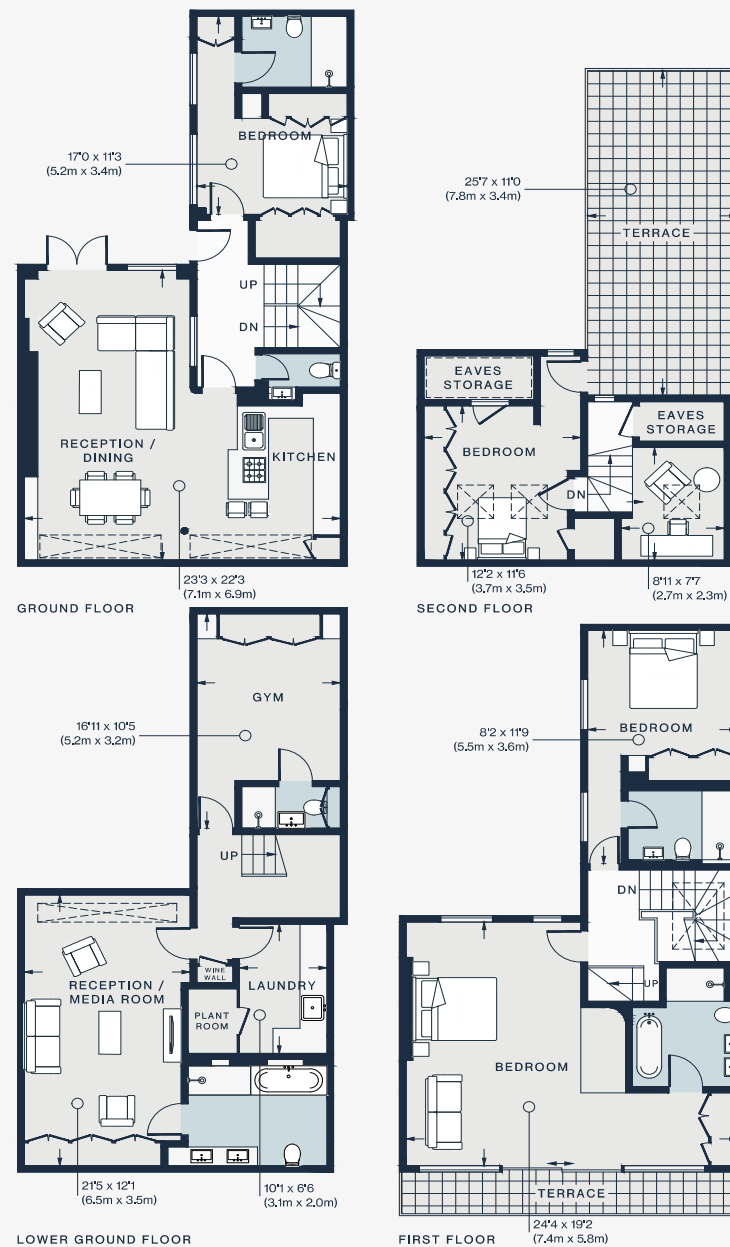
APPROXIMATE GROSS INTERNAL AREA

2,489 sq ft / 231.3 sq m

020 7727 1717

domusnova.com

LONDON | IBIZA



Approx. Gross Internal Area = 2,489 sq ft / 231.3 sq m  
(Excluding Roof Terrace and Eaves Storage)

Floor plans are for illustrative purposes only and not to scale. Compliant with RICS code of measuring practice. Furniture layouts are indicative only. This property may be furnished, part-furnished or unfurnished. Please refer to your agent for details.