

DOMUS NOVA



Craven Hill Mews, W2 – £1,962 p/w (LL)

In partnership with **BARNES**
INTERNATIONAL REALTY

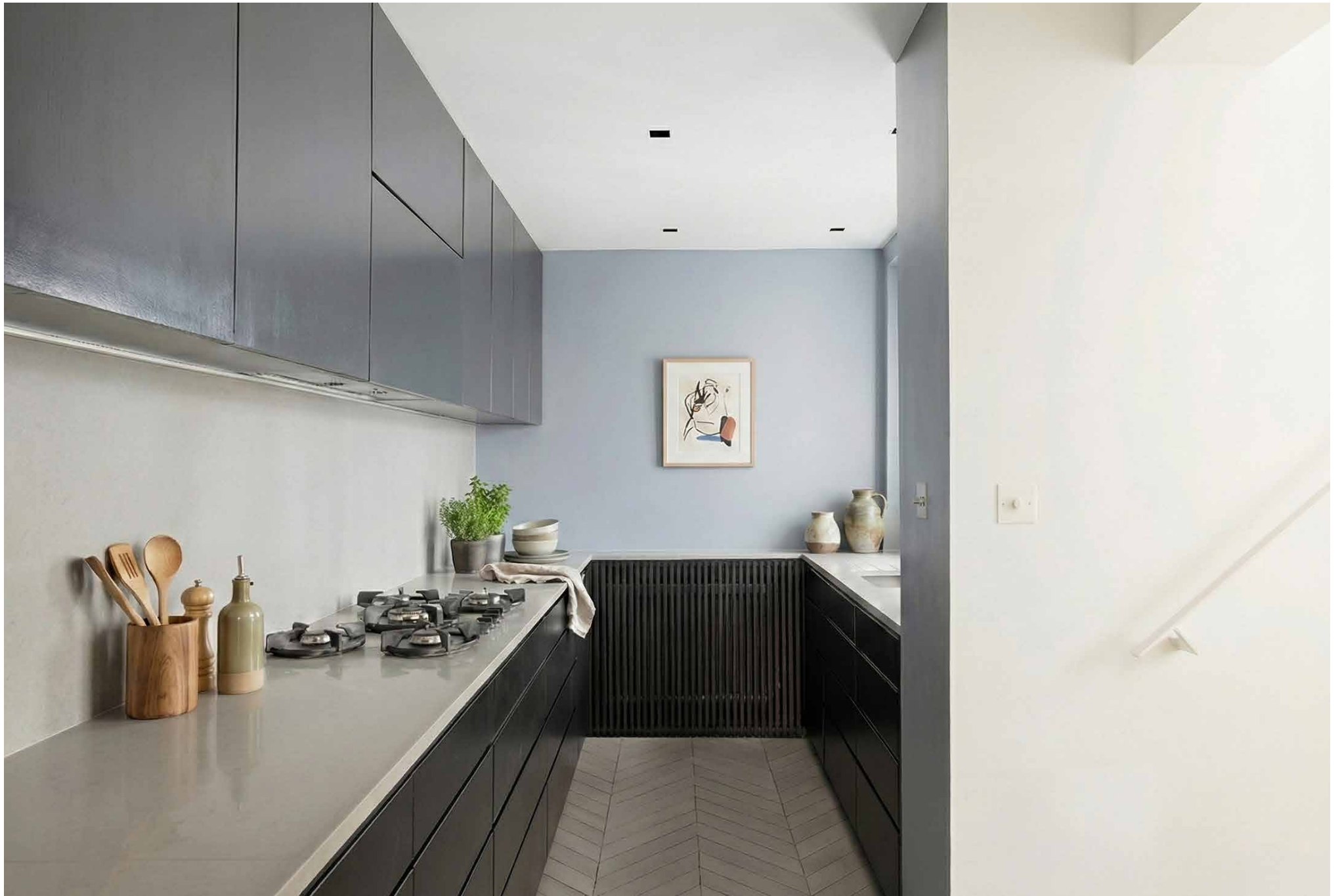


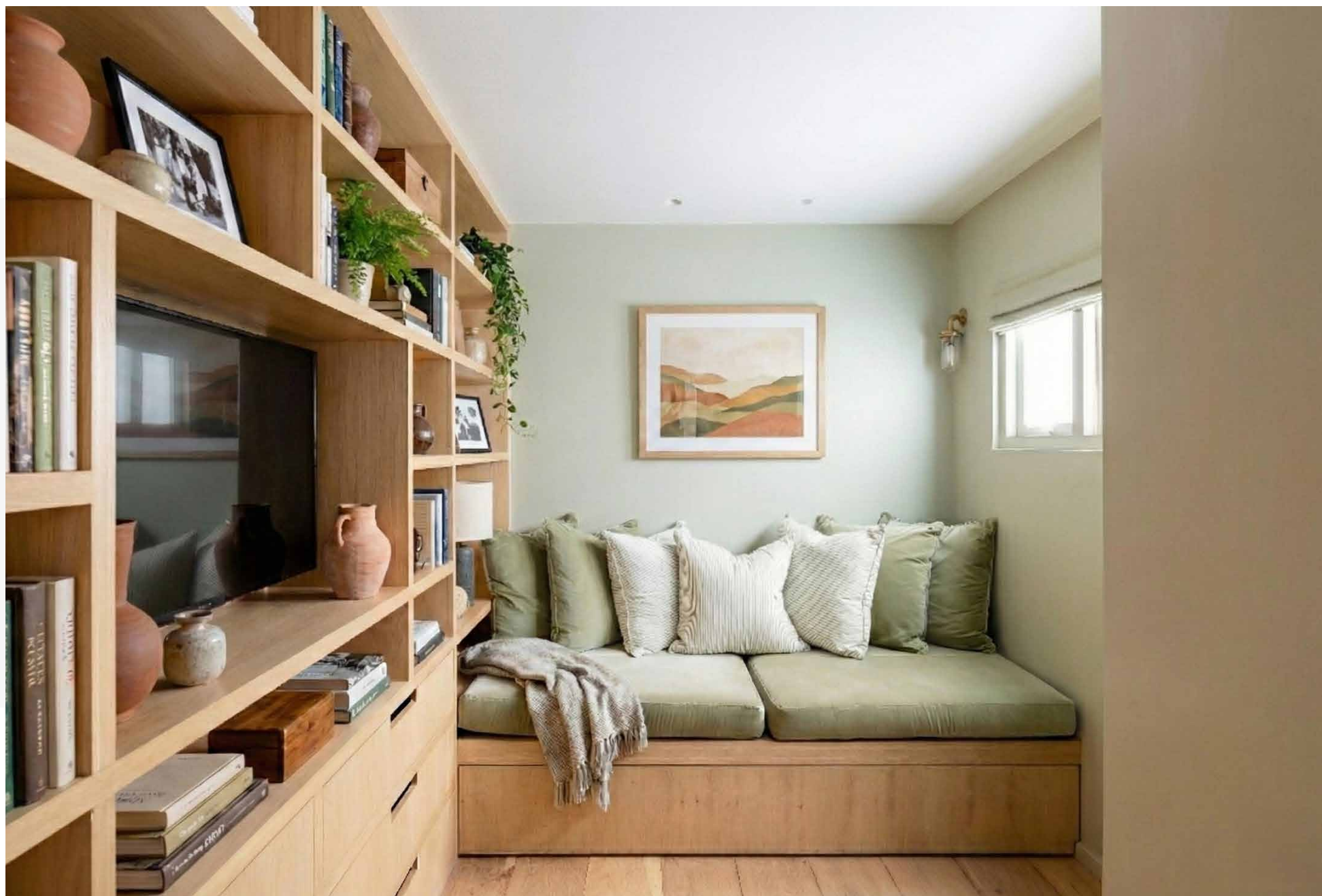
Originally serving as stables for the surrounding townhouses, this characterful mews is a tapestry of cobbles, brick and colourful façades. Inside, thoughtful renovations by Studio Stodberg implement monochromatic design across three generous floors.

Defying expectations of a typical mews, the open-plan living space impresses with soaring ceilings and an abundance of light. A space thoughtfully divided in two, floor-to-ceiling shelving establishes distinct areas for dining and lounging. To one side, an ornate fireplace serves as a grand focal feature. To the other, an archway leads through to the streamlined kitchen – all sleek white worktops, Miele appliances and handleless black cabinetry.











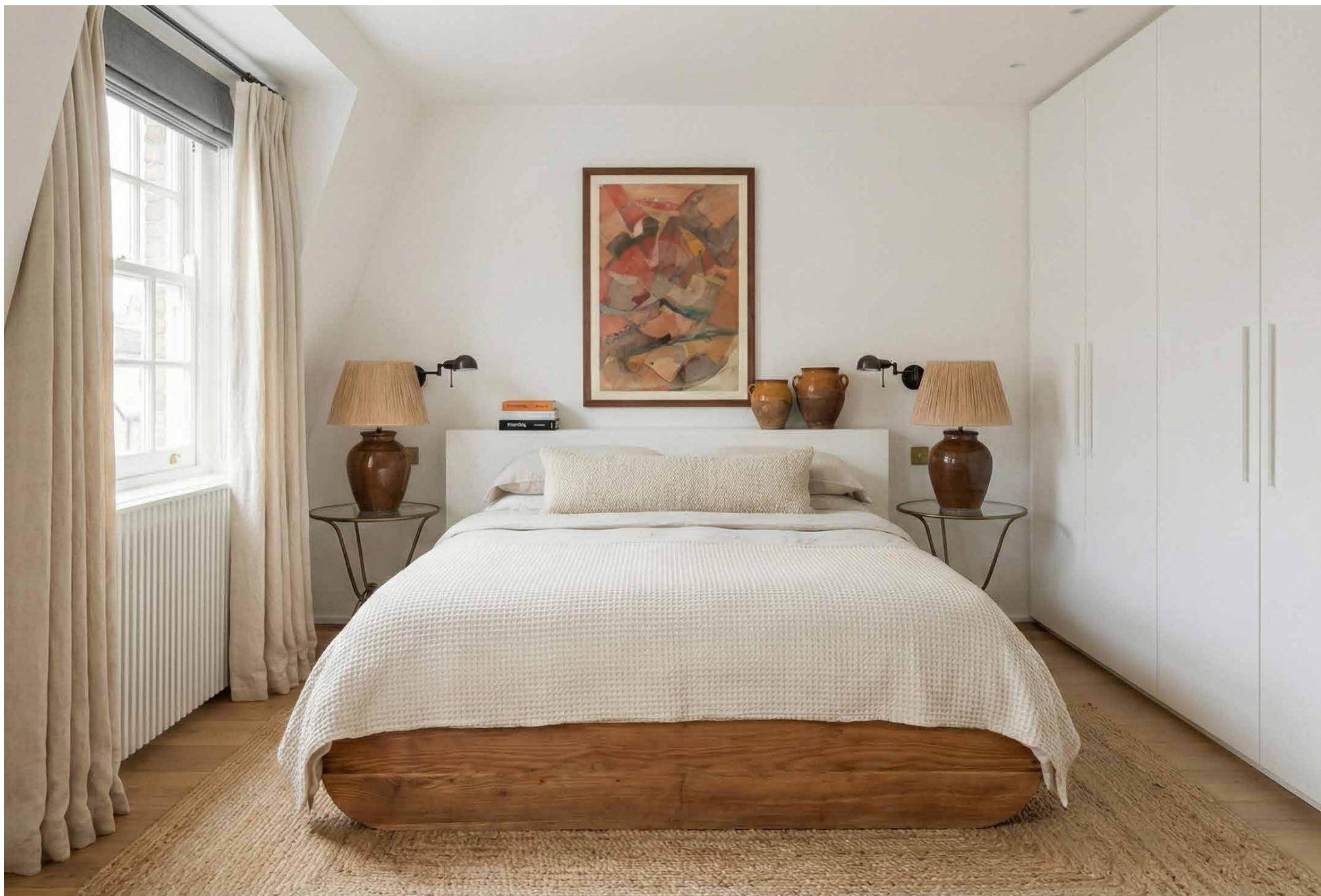
“Defying expectations of a typical mews, the open-plan living space impresses with soaring ceilings and an abundance of light.”

Across the lower ground floor, the striking colour palette is softened in two serene bedrooms. Injected with warmth from wooden floors and natural light, each room comes served by bespoke storage and contemporary bathrooms. A media room to the rear of this floor is an idyllic nook to hole up in on rainy days.

The principal bedroom suite sweeps across the top of the home, its pared-back palette and minimalist design forming a restful setting. A dedicated dressing area lined with wardrobes leads to the en suite, complete with a glass framed rainfall shower. Also on this floor, a private balcony with wooden decking makes for a secluded spot to enjoy London's warmer days.

*Images feature CGI staging and are for illustrative purposes only – this property comes unfurnished.















Property Details

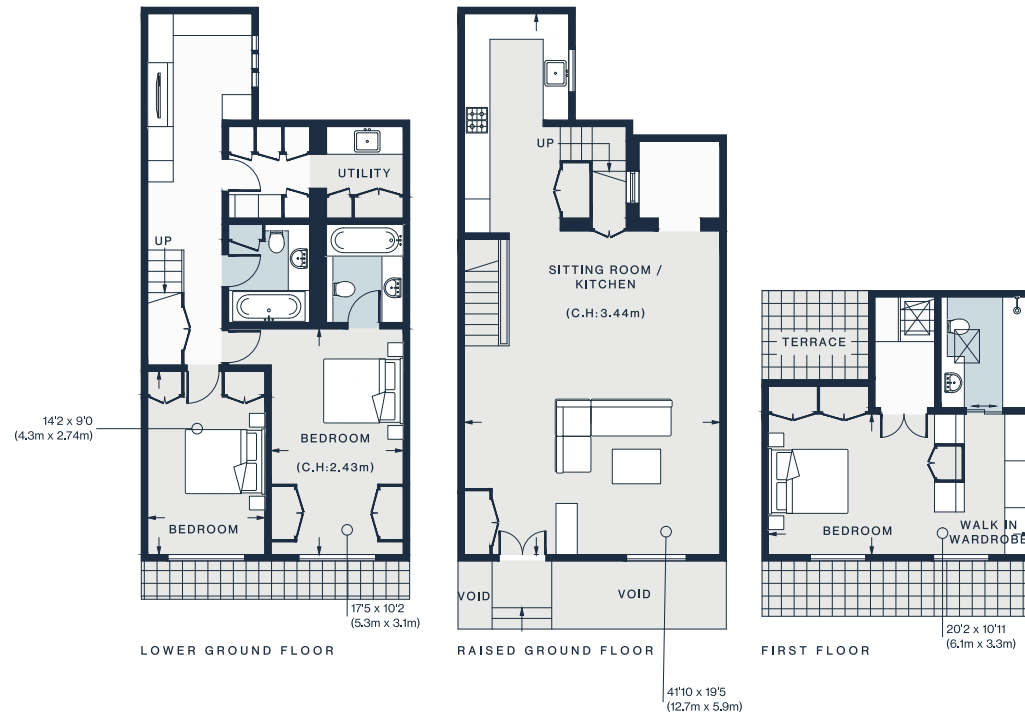
Open-plan dining and reception room
 Contemporary kitchen
 Principal bedroom suite with dressing area
 Guest bedroom suite
 One further bedroom
 Family bathroom
 Media room
 Office
 Balcony
 Utility room
 City of Westminster

Approx. 1,773 sq ft / 164.7 sq m

EPC=D

Deposit: £11,772

Council Tax Band: G



Approx. Gross Internal Area = 1773 sq ft / 164.7 sq m

Floor plans are for illustrative purposes only and not to scale. Compliant with RICS code of measuring practice.
Furniture layouts are indicative only. This property may be furnished, part-furnished or unfurnished. Please refer to your agent for details.



Location

Set at the end of a secluded mews, this peaceful street is a stone's throw from some of the area's best offerings. For relaxation, the Six Senses Spa at the nearby Whiteley's development will be the UK's first. For dining and retail therapy, head to Westbourne Grove. Brunch at Sunday in Brooklyn or Granger & Co. Browse the rails at Reformation and Sézane then round off the day with dinner at Mediterranean restaurant Wild or Endo Kazutoshi's sushi hotspot Sumi. Paddington Station – just five minutes from your door – allows quick access to the city and beyond.

Lancaster Gate - 8 mins (Central)

Paddington – 8 mins (Bakerloo, Circle, District, Hammersmith & City)

Who — we are



Forward-thinkers in property, design and culture, we're an estate agency that hits refresh.

Domus Nova was born out of a desire to do things differently; to break the traditional agency model and focus on design-led homes in London and Ibiza, all while delivering the highest levels of personal service.

Our story starts in the nineties when we founded Notting Hill's first boutique agency – and we continue to open the doors to the most remarkable spaces, revealing them to our like-minded community.

We want to help you live better – and believe considered design can do that. That's why we remain committed to building on our legacy, in collaboration with BARNES International, an established agency with a market-leading presence in 22 countries.

Uniting our local insight and curated portfolio with BARNES International's expansive reach, we can facilitate the best opportunities in not only London and Ibiza, but also across Europe, the US and further afield – whether that's a château in the South of France, a penthouse in New York, or a chalet in the Swiss Alps.



DOMUS NOVA

Specialising in London
and Ibiza's design-led homes

Let's talk
020 7727 1717
lettings@domusnova.com

The property particulars are a guide not statements. Descriptions, photographs, and plans are for guidance and should be checked by the prospective tenant. The Property is offered "subject to contract and references". No warranties, representations, or Tenancy is given by Domus Nova. Expenses incurred by a prospective tenant will not be reimbursed if the Landlord withdraws prior to the Tenancy Agreement being signed, dated and exchanged and cleared funds received. Furniture and other items shown in a property at viewing may belong to a current tenant. The prospective tenant should verify in writing which fixtures and fittings forms part of the Tenancy. Our full lettings disclaimer together with trading names and our [Privacy Policy](#) is shown on our website

© 2025 Domus Nova in partnership with BARNES International. All rights reserved.

In partnership with
BARNES
INTERNATIONAL REALTY