

DOMUS NOVA



Cornwall Crescent, W11
£4,450,000



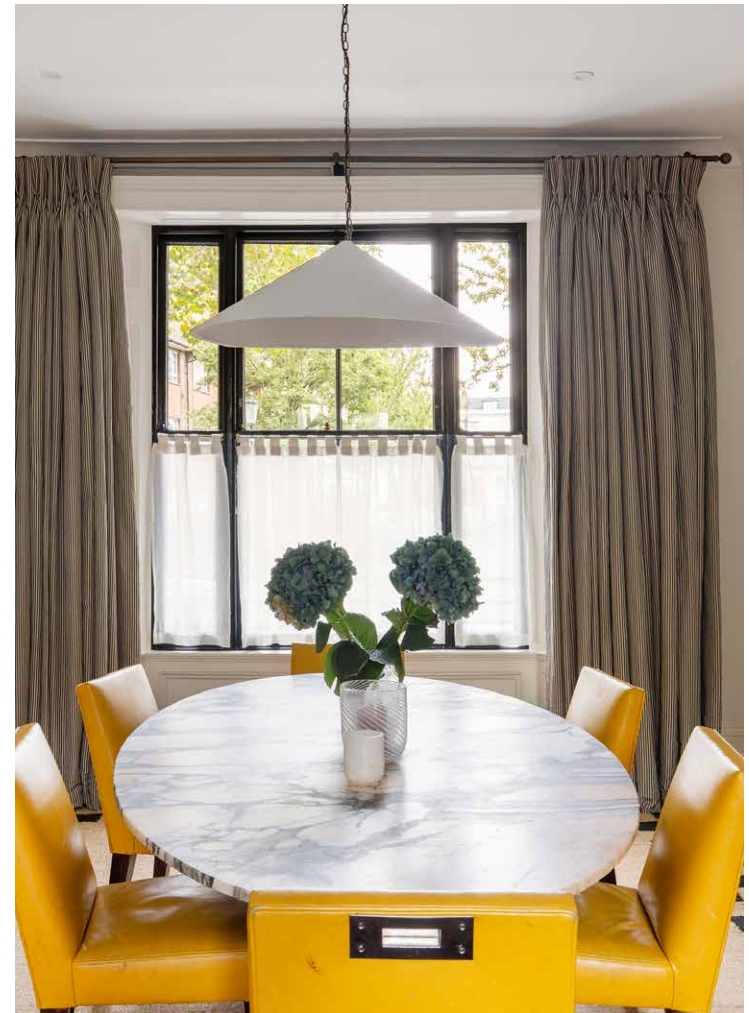
Tucked away from Notting Hill's famed thoroughfare, this striking five-floor townhouse makes an immediate impression. Its navy stucco façade is quietly distinguished, a prelude to the characterful interiors within.

Stepping inside, the entrance hall sets the tone with Edward Bulmer walls and high-gloss Mylands woodwork. Beyond, contemporary country aesthetics unfold with a balance of precision and personality. The kitchen and dining room has a convivial feel, with natural light flooding in through dual-aspect fenestration. Arranged to one side, the bespoke kitchen – designed by Flora Soames and handmade in Britain – commands attention. A bespoke and copper topped island adds contrast, while copper splashbacks, a William Holland sink, and a Mercury Chrome range cooker await ambitious home chefs. French doors lead out from here to a decked terrace, a private spot to survey the split-level garden below.

















Ascending to the first floor, double doors reveal the reception room – a study in layered textures and thoughtful details. Conversation starters come in abundance, from the hand-painted emerald fireplace by decorative artist Meg Boscawen to the wall of bespoke navy shelving and marble bar. For quiet contemplation, the half-landing leads to an intimate balcony, or a study can be found on the ground floor.

Splashes of red – a glossy handrail and skirting – draw the eye upward to the principal suite. Nestled across the top floor, this sanctuary is bathed in natural light and soft neutrals. The en suite is understated but elegant, complete with a bathtub, separate walk-in shower and fittings by Burlington.

Below, three further bedrooms are wrapped in soothing pastel hues. The family bathroom takes a bolder approach: bright red panelling and Otto geometric tiles create a joyful contrast, anchored by a bathtub with an overhead shower.

The lower-ground floor adds yet another layer of versatility. A secondary reception room and playroom sit alongside a kitchen and utility space – complete with an integrated Nest washing machine. Throughout, the home also benefits from meticulous updates to plumbing, wiring, and roofing.









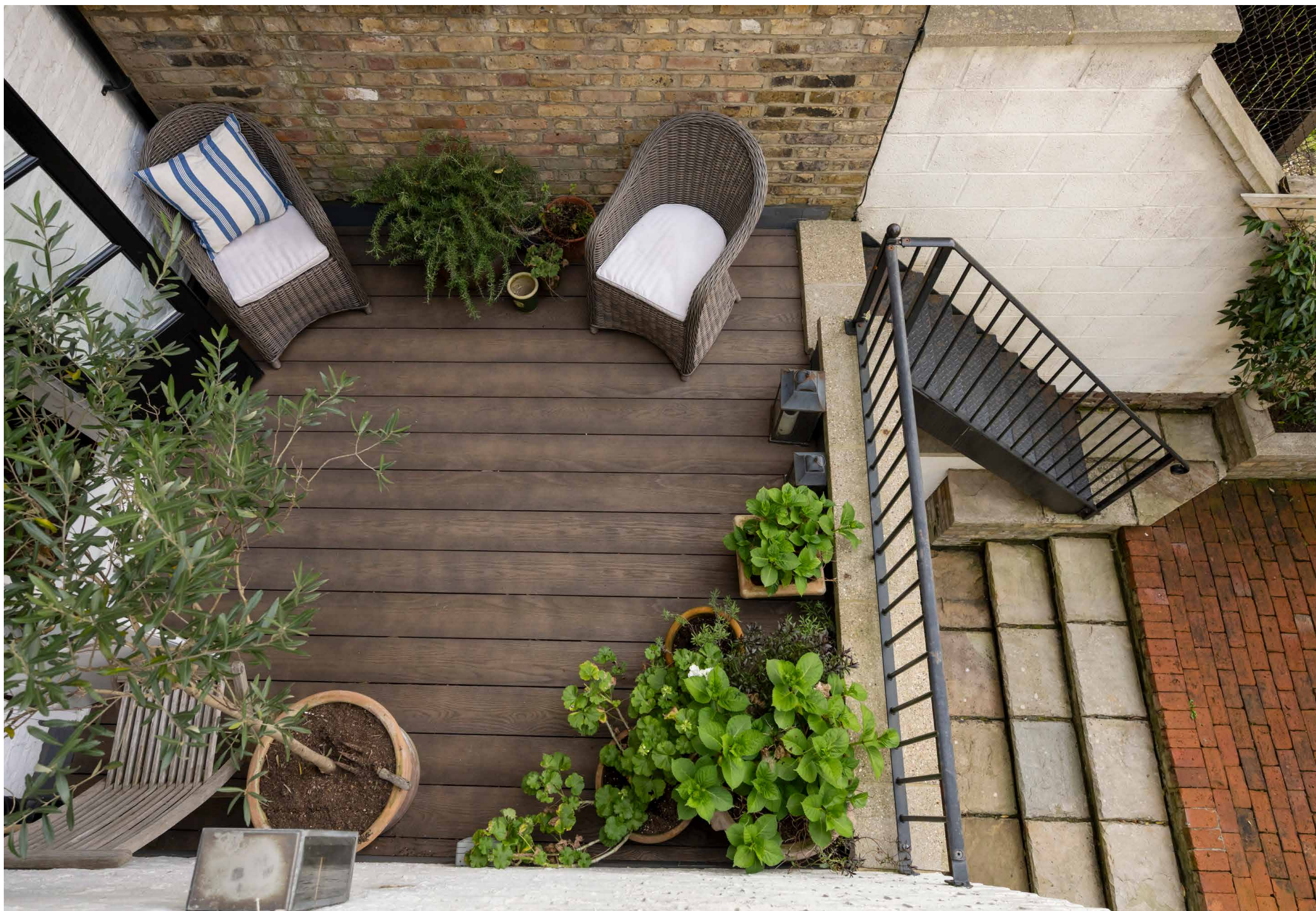


“ Beyond, contemporary country aesthetics unfold with a balance of precision and personality.

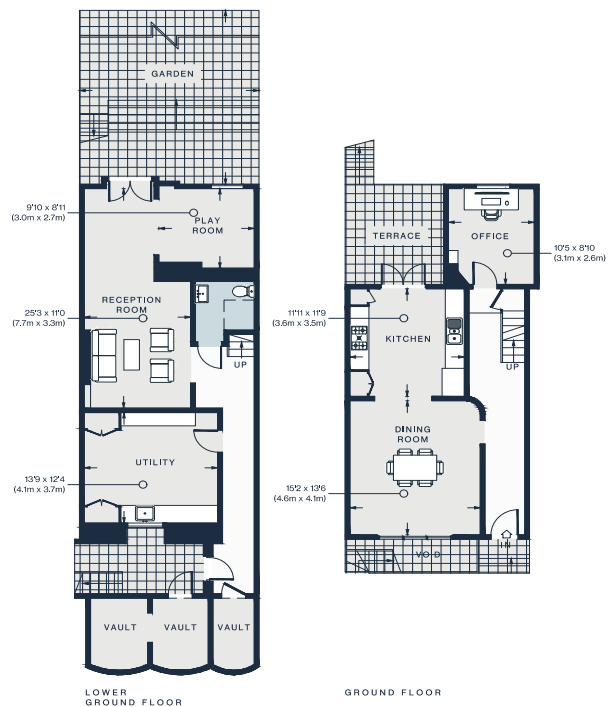
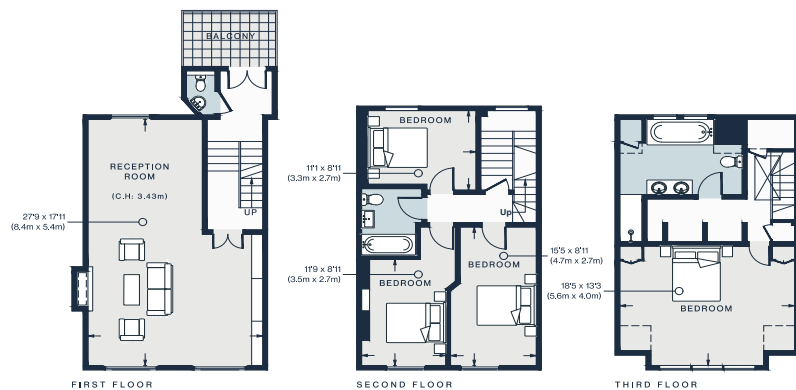












Approx. Gross Internal Area = 2990 sq ft / 277.8 sq m
 (Including Vault)

Floor plans are for illustrative purposes only and not to scale. Compliant with RICS code of measuring practice.

Property Details

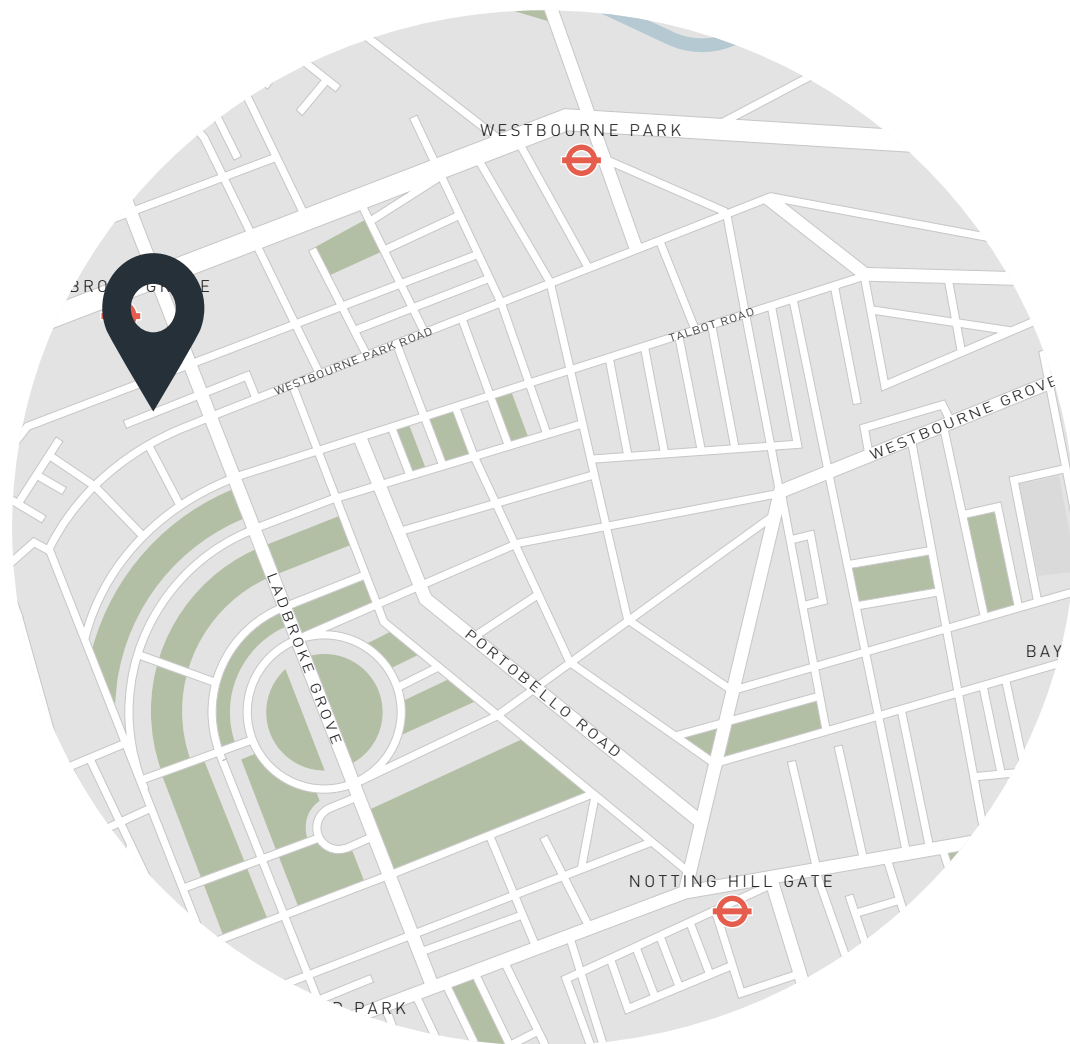
Open-plan kitchen and dining room
 Double reception room
 Reception room and playroom
 Principal bedroom suite
 Three further bedrooms
 Family bathroom
 Split-level patio garden
 Terrace
 Balcony
 Office
 Utility room
 Security system
 Royal Borough of Kensington & Chelsea

Approx. 2,990 sq ft / 278.8 sq m

EPC=E

Tenure: Freehold

Council Tax Band: H



Location

In spite of its peaceful residential feel, Cornwall Crescent has fantastic proximity to the best eateries, shopping and amenities this West London neighbourhood has to offer. Make your way over to Portobello Road's rows of antiques stalls or stop in at the iconic Electric Cinema. Try one of the nearby fine dining institutions: Dorian, The Ledbury or Caractère. The bohemian buzz of Golborne Road is also a ten-minute walk away, with its wealth of great spots: Lisboa and Layla serve up morning pastries, while Straker's and Caia call for evening meals with friends. With Ladbroke Grove tube station just a stroll away, there's easy access into central London and beyond.

Ladbroke Grove - 3 mins (Circle, Hammersmith & City)

Specialising in London
and Ibiza's design-led homes

Let's talk
020 7221 7817
sales@domusnova.com
domusnova.com

The particulars above are a guide, not an offer or contract. Descriptions, photographs and plans are not statements or representations of fact. Measurements are approximate and not to scale. Prospective purchasers must verify the accuracy of the information within the particulars. Domus Nova does not give any representations or warranties; nor represent the Seller legally. Domus Nova has no liability, for any costs, losses or expenses incurred by the Seller or a prospective buyer relating to the sales and buying transaction.

Our Sales Disclaimer, trading names and privacy policy on how your data is processed and used is found in full on our website in our [Privacy Statement](#).

© Domus Nova 2025. All rights reserved.