

DOMUS NOVA

Colville Terrace

Notting Hill W11

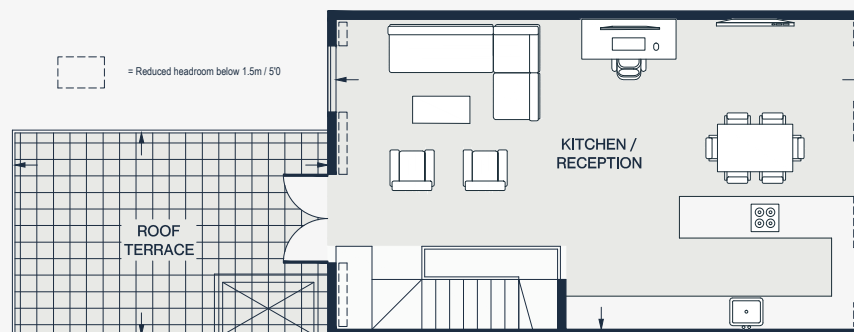
APPROXIMATE GROSS INTERNAL AREA

1364 sq ft / 126.7 sq m

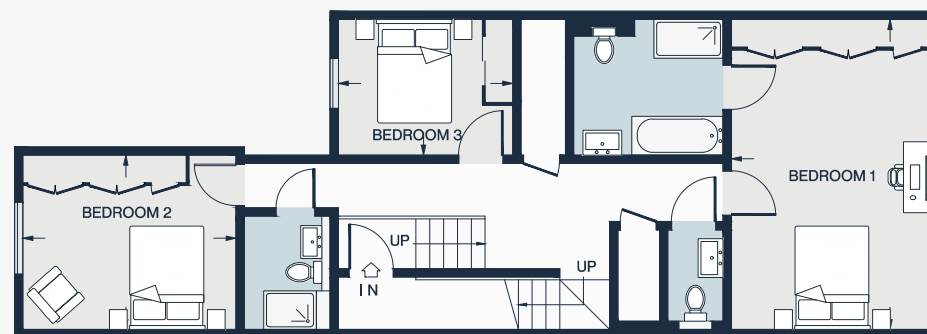
020 7221 7817

domusnova.com

LONDON | IBIZA



FOURTH FLOOR



THIRD FLOOR

KITCHEN / RECEPTION

31'4 x 18'5 (9,6m x 5,6m)

BEDROOM 1

18'2 x 11'11 (5,6m x 3,6m)

BEDROOM 3

10'3 x 8'1 (3,1m x 2,4m)

ROOF TERRACE

19'2 x 11'11 (5,8m x 3,6m)

BEDROOM 2

12'7 x 10'4 (3,8m x 3,1m)

Approx. Gross Internal Area = 1,364 sq ft / 126.7 sq m

Floor plans are for illustrative purposes only and not to scale. Compliant with RICS code of measuring practice.