

DOMUS NOVA

Colville Terrace

Notting Hill W11

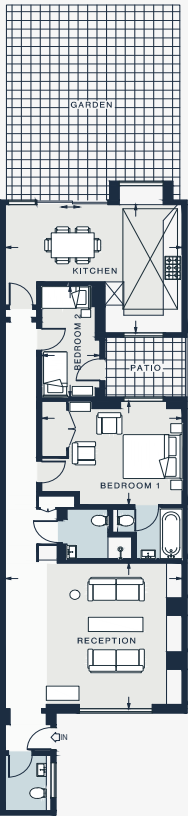
APPROXIMATE GROSS INTERNAL AREA

1,041sq ft / 96.7 sq m

020 7727 1717

domusnova.com

LONDON | IBIZA



RECEPTION
18'3 x 16'4 (5.6m x 5.0m)

KITCHEN
18'4 x 16'8 (5.6m x 5.1m)

BEDROOM 1
14'8 x 11'1 (4.5m x 3.4m)

BEDROOM 2
12'5 x 6'11 (3.8m x 2.1m)

Approx. Gross Internal Area = 1,041 sq ft / 96.7 sq m

Floor plans are for illustrative purposes only and not to scale. Compliant with RICS code of measuring practice. Furniture layouts are indicative only. This property may be furnished, part-furnished or unfurnished. Please refer to your agent for details.