

DOMUS NOVA

Colville Terrace

Notting Hill W11

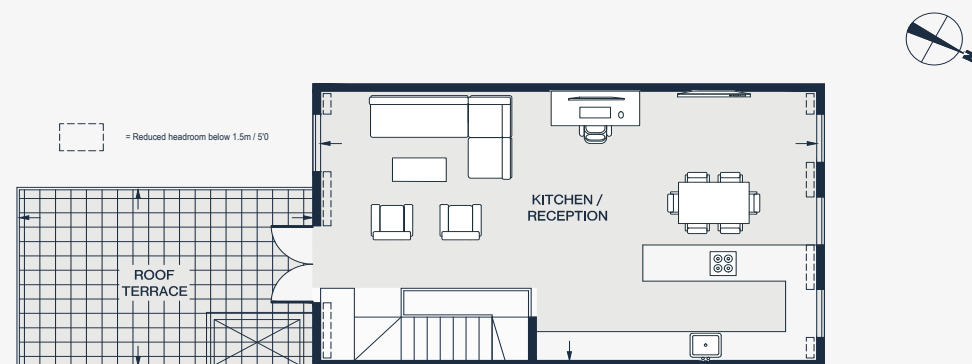
APPROXIMATE GROSS INTERNAL AREA

1,364 sq ft / 127.7 sq m

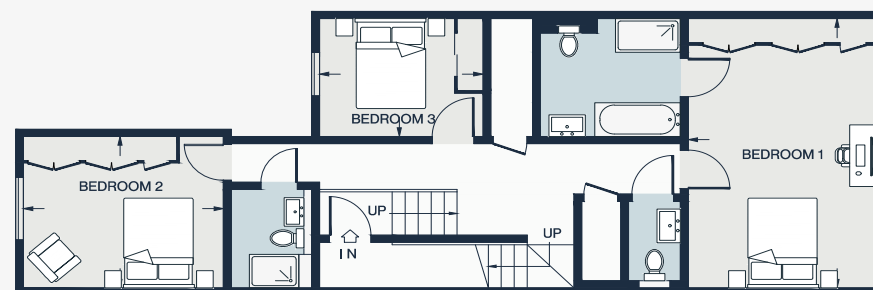
020 7727 1717

domusnova.com

LONDON | IBIZA



FOURTH FLOOR



THIRD FLOOR

KITCHEN / RECEPTION

31'4 x 18'5 (9.6m x 5.6m)

BEDROOM 1

18'2 x 11'11 (5.6m x 3.6m)

BEDROOM 3

10'3 x 8'1 (3.1m x 2.4m)

ROOF TERRACE

19'2 x 11'11 (5.8m x 3.6m)

BEDROOM 2

12'7 x 10'4 (3.8m x 3.1m)

Approx. Gross Internal Area = 1,364 sq ft / 126.7 sq m

Floor plans are for illustrative purposes only and not to scale. Compliant with RICS code of measuring practice.