

# DOMUS NOVA

Colville Terrace

Notting Hill W11

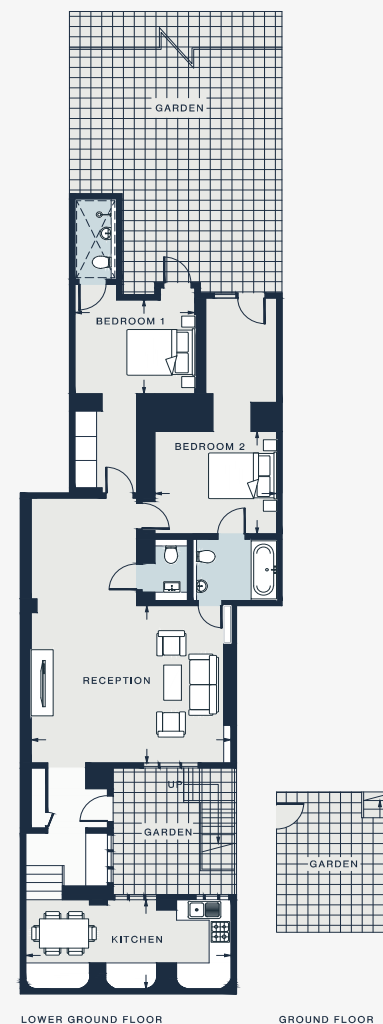
APPROXIMATE GROSS INTERNAL AREA

**1,149 sq ft / 106.7 sq m**

020 7727 1717

domusnova.com

LONDON | IBIZA



LOWER GROUND FLOOR

GROUND FLOOR

## RECEPTION

18'1 x 15'2 (5.5m x 4.6m)

## BEDROOM 1

10'10 x 9'1 (3.3m x 2.8m)

## BEDROOM 2

11'0 x 9'11 (3.3m x 3.0m)

## KITCHEN

18'8 x 8'7 (5.7m x 2.6m)

Approx. Gross Internal Area = 1,149 sq ft / 106.7 sq m

Floor plans are for illustrative purposes only and not to scale. Compliant with RICS code of measuring practice. Furniture layouts are indicative only. This property may be furnished, part-furnished or unfurnished. Please refer to your agent for details.