

DOMUS NOVA



Colville Terrace W11
£795,000



Contemporary design energises this one-bedroom apartment, set on one of Notting Hill's most colourful streets.

Just around the corner from Portobello Road, a soaring stucco-fronted townhouse — synonymous with its Notting Hill postcode — makes a bold first impression. Ascend to the second floor, where a lateral one-bedroom apartment has been crafted with modern living in mind. Warm wood floors draw you into the open-plan kitchen and reception room, with sunlight beaming through a series of sash windows. The walls are kept pale, ready for interior creativity, while the kitchen offers a tactile edge with brushed metal cabinetry and wooden worktops. Pendant lights above the dining area and suspended pot holders in the kitchen make the most of the room's voluminous aspects.





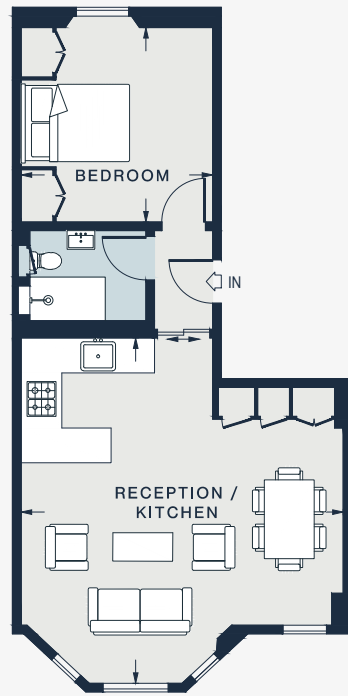


The principal bedroom is minimalist in style, gently illuminated through a south-facing window. Surrounding the bed are integrated cabinets, making for a neat storage solution. Next door, the bathroom is sleek with whitewashed metro tiles and a walk-in shower.









SECOND FLOOR

RECEPTION / KITCHEN
19'5 x 17'11 (5.9m x 5.5m)

BEDROOM
10'11 x 10'9 (3.3m x 3.3m)

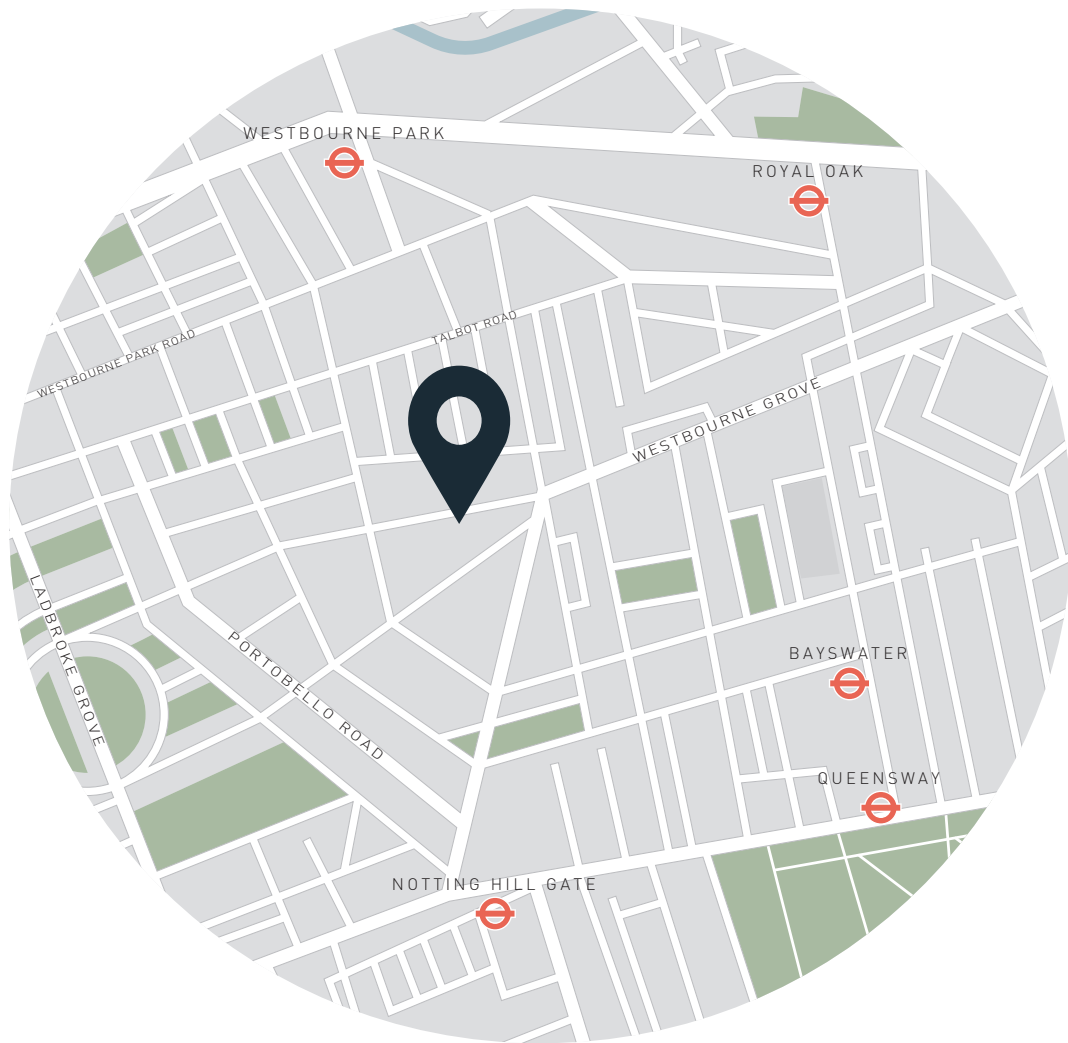
Approx. Gross Internal Area = 486 sq ft / 45.0 sq m

Floor plans are for illustrative purposes only and not to scale. Compliant with RICS code of measuring practice.

Property Details

Open-plan kitchen and reception room
 One bedroom
 One bathroom
 Royal Borough of Kensington & Chelsea

Approx. 486 sq ft / 45 sq m
 EPC - C
 Council tax - E
 Share of freehold - circa 991 years



Location

Moments from bustling Portobello Road, the vibrant world of Notting Hill is on the doorstep of Colville Terrace. Start your day at Gail's Bakery or Hermanos Colombian Coffee Roasters before exploring the antiques of the market and the boutiques of the neighbourhood. Enjoy brunch at Daylesford Organic or Sunday in Brooklyn before heading to Hyde or Holland Park. For high-end dining, choose between two-Michelin-starred The Ledbury and three-Michelin-starred Core by Clare Smyth. On the way home, catch a film at The Electric Cinema. Be home in just a minute.

Ladbroke Grove – 7 mins (Circle, Hammersmith & City)

Notting Hill Gate – 11 mins (Central, Circle, District)

Specialising in London
and Ibiza's design-led homes

Let's talk
020 7221 7817
sales@domusnova.com
domusnova.com

The particulars above are a guide, not an offer or contract. Descriptions, photographs and plans are not statements or representations of fact. Measurements are approximate and not to scale. Prospective purchasers must verify the accuracy of the information within the particulars. Domus Nova does not give any representations or warranties, nor represent the Seller legally. Domus Nova has no liability, for any costs, losses or expenses incurred by the Seller or a prospective buyer relating to the sales and buying transaction.

Our Sales Disclaimer, trading names and privacy policy on how your data is processed and used is found in full on our website in our [Privacy Statement](#).

© Domus Nova 2023. All rights reserved.