

DOMUS NOVA



Colville Terrace W11
£1,325,000



Refined design in a regal setting. This immaculate one-bedroom apartment sits on one of Notting Hill's most vibrant streets.

Moments away from Portobello Road, a pastel green townhouse plays host to a home that blends heritage charm with modern design. Set across the first floor, this lateral one-bedroom apartment has been curated for sophisticated city living.

Wooden flooring extends through the entrance into the open-plan kitchen and living room, where a palette of cool tones lends a contemporary edge to the home's period framework. Arranged around a stone fireplace surround, the living and dining area is a relaxed setting for socialising. Accentuating the palatial proportions, both a swan chandelier and tall bay window illuminate the area. Set against the wall, a pastel grey kitchen enhances the sense of space with integrated appliances and sleek lines. From here, a floor-to-ceiling window slides up to reveal a small balcony – an intimate setting for alfresco dining in warmer months.









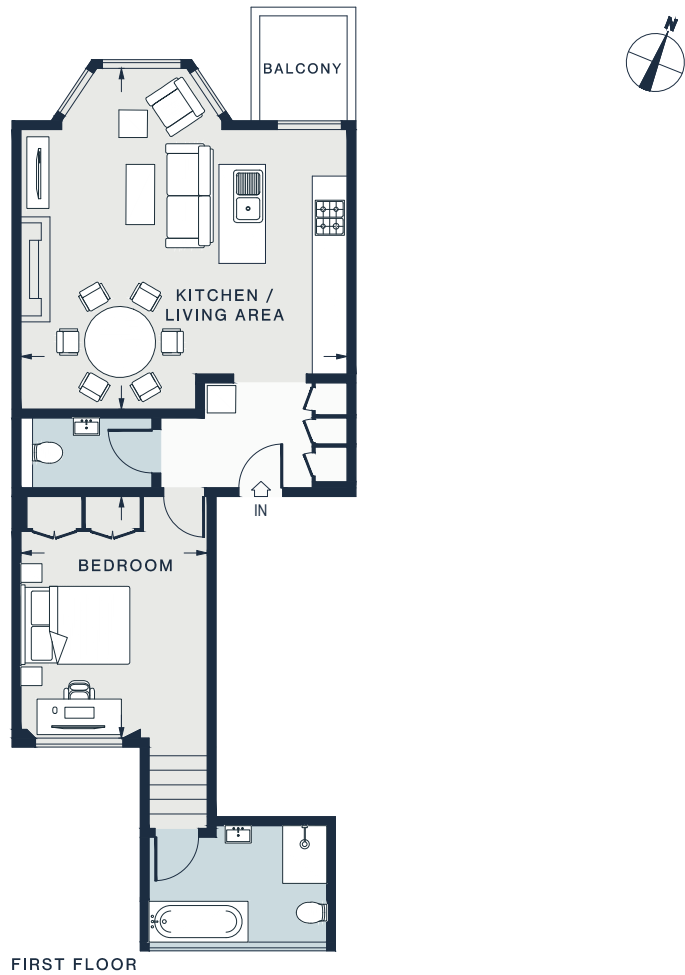
Neutral tones continue through to the principal bedroom suite, creating a tranquil backdrop for resting. Softly lit from a sash window, bespoke integrated wardrobes make for a stylish storage solution. Descend steps to a contemporary en suite bathroom, where a bathtub and walk-in shower await.











Property Details

Open-plan kitchen and living room
 Principal bedroom suite
 Cloakroom
 Royal Borough of Kensington & Chelsea

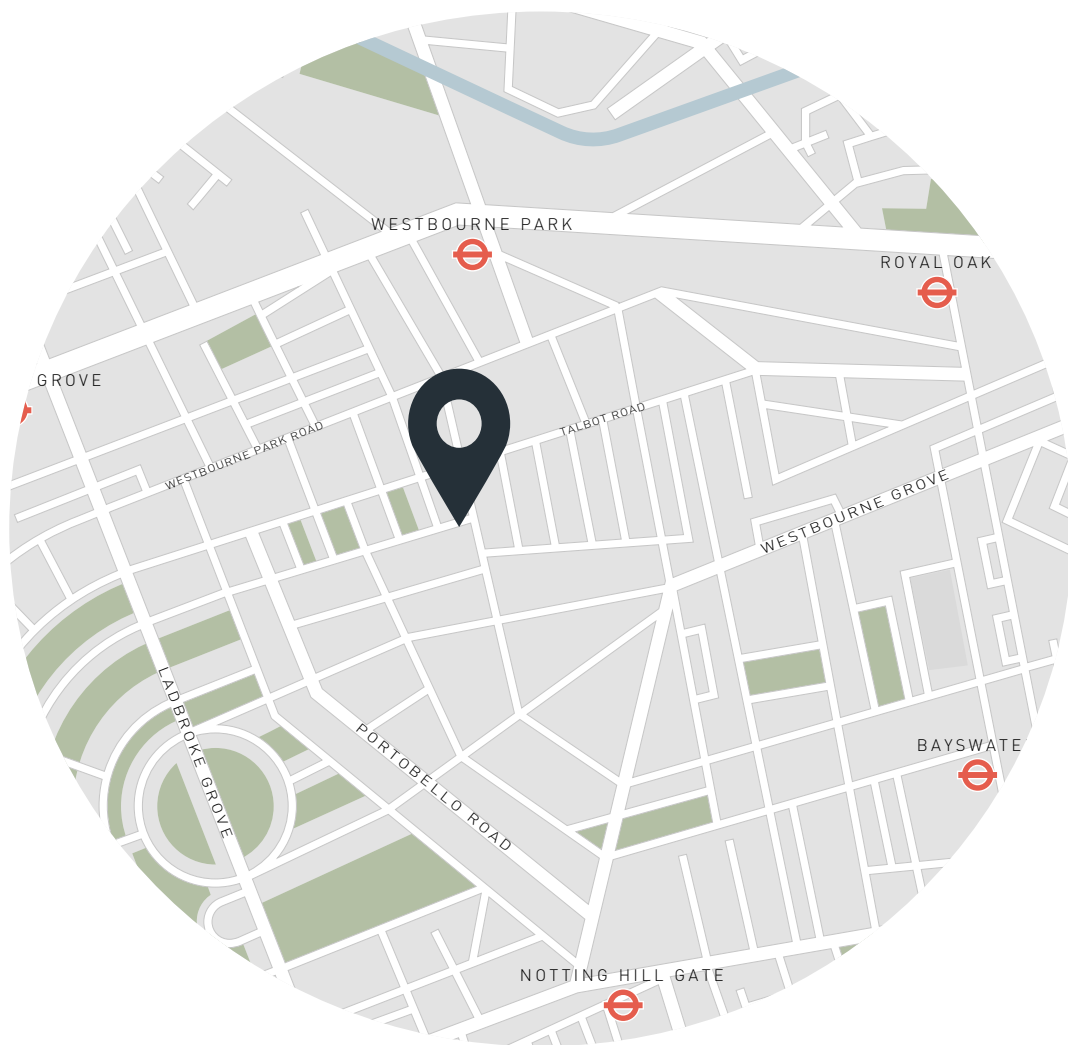
Approx. 625 sq ft / 58.1 sq m
 EPC - D
 Council tax - F
 Share of freehold

KITCHEN / LIVING AREA
 19'2 x 18'4 (5.8m x 5.6m)

BEDROOM
 13'8 x 10'6 (4.1m x 3.2m)

Approx. Gross Internal Area = 625 sq ft / 58.1 sq m

Floor plans are for illustrative purposes only and not to scale. Compliant with RICS code of measuring practice.



Location

Moments from bustling Portobello Road, vibrant Notting Hill is on the doorstep of Colville Terrace. Start your day at Gail's Bakery or Hermanos Colombian Coffee Roasters before exploring the antiques of the market and the boutiques of the neighbourhood. Enjoy brunch at Daylesford Organic or Sunday in Brooklyn before heading to Hyde or Holland Park. For high-end dining, choose between two Michelin-starred The Ledbury and three-Michelin-starred Core by Clare Smyth. On the way home, catch a film at The Electric Cinema. Be home in just a minute.

Ladbroke Grove – 7 mins (Circle, Hammersmith & City)
Notting Hill Gate – 11 mins (Central, Circle, District)

Specialising in London
and Ibiza's design-led homes

Let's talk
020 7221 7817
sales@domusnova.com
domusnova.com

The particulars above are a guide, not an offer or contract. Descriptions, photographs and plans are not statements or representations of fact. Measurements are approximate and not to scale. Prospective purchasers must verify the accuracy of the information within the particulars. Domus Nova does not give any representations or warranties, nor represent the Seller legally. Domus Nova has no liability, for any costs, losses or expenses incurred by the Seller or a prospective buyer relating to the sales and buying transaction.

Our Sales Disclaimer, trading names and privacy policy on how your data is processed and used is found in full on our website in our [Privacy Statement](#).

© Domus Nova 2023. All rights reserved.