

DOMUS NOVA



Colville Square W11
£1,650,000



Contemporary industrial style envelops this three-bedroom architect-designed duplex for sale in Notting Hill, complete with a showstopping roof terrace.

Meticulously imagined by Studio Stödberg, this penthouse apartment offers a contemporary contrast to its white stucco exterior.

Spanning the fourth floor, a spacious open-plan kitchen and living room features whitewashed walls and integrated shelving – a minimalist canvas for captivating design details. A commanding brushed grey fireplace and floor-to-ceiling wooden slats subtly infuse industrial style, while twin French doors flood the space with light, leading out to a balcony.

A pared-back palette extends through to the kitchen, where granite-grey cabinetry establishes a sleek dark backdrop for the sunlit space. Industrial-inspired pendant lights overhang a glossy white island – a relaxed area for informal dining. Glass doors open out to an additional balcony, a private suntrap for alfresco eating. Concealed behind a wall of vertical wooden beams, an oak staircase leads the way to the home's standout space – an expansive decked roof terrace with views across Notting Hill.









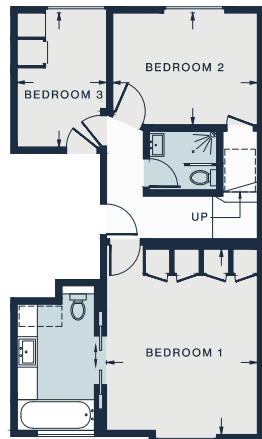
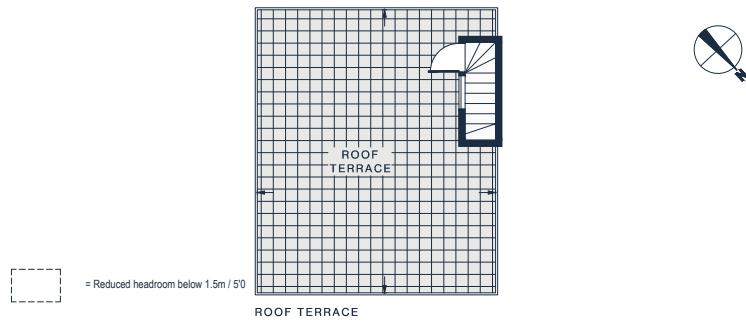
Set across the lower floor, the principal bedroom suite embraces the beauty in simplicity with whitewashed walls and dark wooden flooring. Sliding doors reveal an en-suite bathroom adorned in olive-toned tiles, complete with a generous bathtub with overhead shower. Two further bedrooms found on this floor feature muted palettes and reams of light, courtesy of their south-facing position. A contemporary shower room enveloped in sage green tiles serves these rooms.











FOURTH FLOOR

RECEPTION / KITCHEN

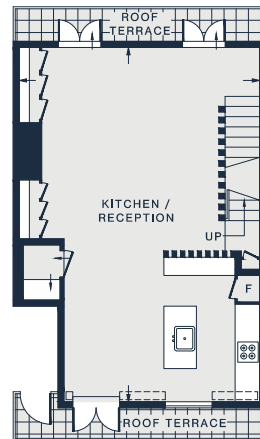
28'7 x 19'4 (8.7m x 5.9m)

BEDROOM 1

14'10 x 12'1 (4.5m x 3.7m)

BEDROOM 2

11'9 x 9'1 (3.5m x 2.7m)



FIFTH FLOOR

BEDROOM 3

10'10 x 7'5 (3.3m x 2.2m)

ROOF TERRACE

22'10 x 19'2 (6.9m x 5.8m)

Property Details

- Open-plan kitchen and reception room
- Principal bedroom suite
- Two further bedrooms
- Shower room
- Two balconies
- Spacious roof terrace
- Royal Borough of Kensington & Chelsea

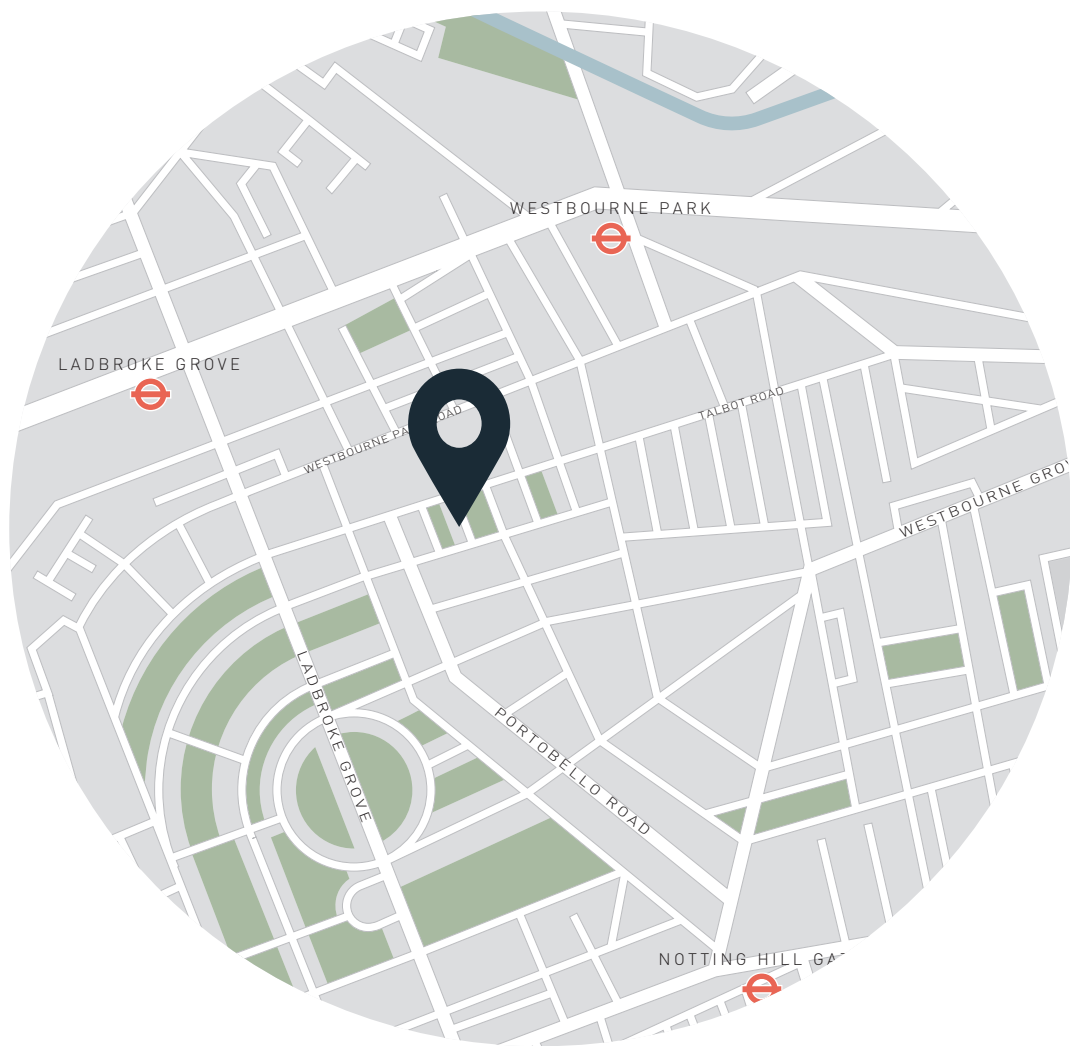
Approx. 1,117 sq ft / 101.7 sq m

EPC - C

Council tax - D

Share of freehold - circa 978 years

Floor plans are for illustrative purposes only and not to scale. Compliant with RICS code of measuring practice. Furniture layouts are indicative only. This property may be furnished, part-furnished or unfurnished. Please refer to your agent for details.



Location

Colville Square enjoys all the serenity of a quiet residential street, with fantastic proximity to bustling Portobello Road. Family-friendly wellness club Cloud Twelve is on your doorstep, with a nutritionally-focused brasserie and wellness clinic on offer. Pick up an artisanal coffee from Farm Girl, before strolling through the magnolia-lined and boutique-filled Westbourne Grove. For a night of evening entertainment, try the Ginstitute for an eclectic array of gin-based drinks, before catching a cult classic at the Electric Cinema.

Ladbroke Grove - 9 minutes (Circle, Hammersmith & City)

Notting Hill Gate - 12 minutes (Central, Circle, District)

Specialising in London
and Ibiza's design-led homes

Let's talk
020 7221 7817
sales@domusnova.com
domusnova.com

The particulars above are a guide, not an offer or contract. Descriptions, photographs and plans are not statements or representations of fact. Measurements are approximate and not to scale. Prospective purchasers must verify the accuracy of the information within the particulars. Domus Nova does not give any representations or warranties, nor represent the Seller legally. Domus Nova has no liability, for any costs, losses or expenses incurred by the Seller or a prospective buyer relating to the sales and buying transaction.

Our Sales Disclaimer, trading names and privacy policy on how your data is processed and used is found in full on our website in our [Privacy Statement](#).

© Domus Nova 2023. All rights reserved.