

# DOMUS NOVA

Colville Road

Notting Hill W11

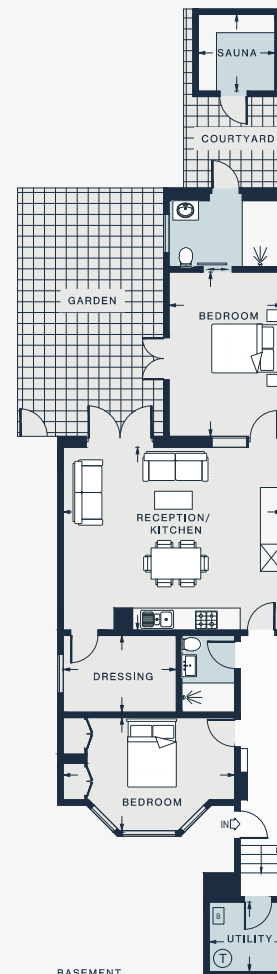
APPROXIMATE GROSS INTERNAL AREA

1027 sq ft / 95.4 sq m

020 7221 7817

domusnova.com

LONDON | IBIZA



RECEPTION / KITCHEN

19'8 x 16'7 (6.0m x 5.0m)

BEDROOM

15'7 x 10'3 (4.7m x 3.1m)

BEDROOM

14'9 x 10'3 (4.5m x 3.1m)

DRESSING

10'3 x 6'11 (3.1m x 2.1m)

UTILITY

7'5 x 6'5 (2.2m x 1.9m)

SAUNA

7'1 x 6'11 (2.1m x 2.1m)

Floor plans are for illustrative purposes only and not to scale. Compliant with RICS code of measuring practice.