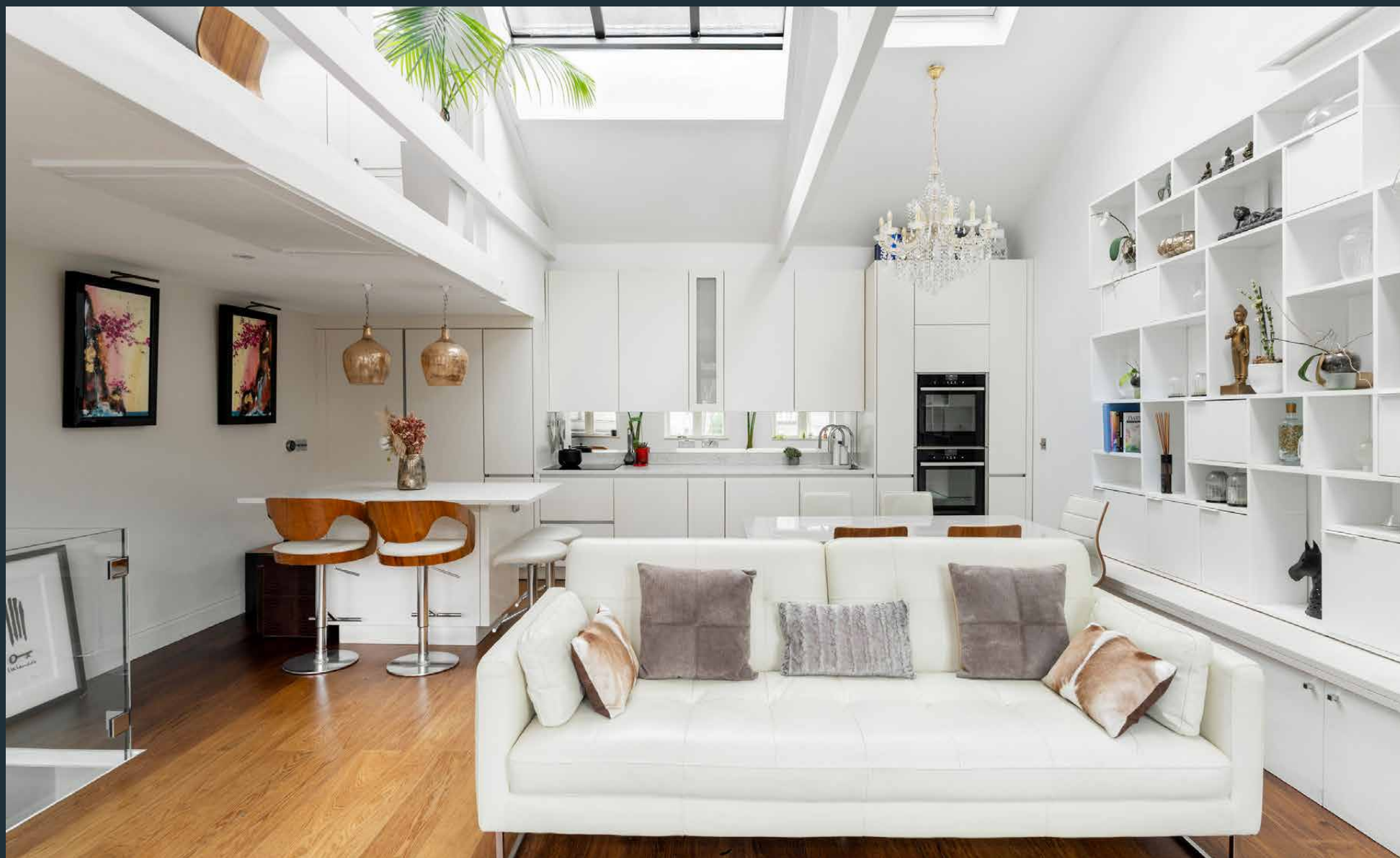


DOMUS NOVA



Colville Mews, W11 – £3,500 p/w (SL)

In partnership with **BARNES**
INTERNATIONAL REALTY



Tucked behind the fashionable stretch of Westbourne Grove, there's a quietude to Colville Mews, a charming cul-de-sac paved with cobblestones. Contained within one of the stock-brick properties, this two-bedroom mews house is a calming setting finished with contemporary design, pale hues and an emphasis on drawing the sunlight in.

From the street, a glass-panelled front door opens into an inviting reception space. Arched mirrors amplify the daylight streaming through glazed doors, while a dusty pink sofa creates an elegant place to pause. The eye is drawn to the zig-zag shapes cast by a glass-framed cantilevered staircase, which ascends to the home's social heart.





A vaulted ceiling enhances the sense of volume, complete with exposed beams and generous skylights



Spread across the first floor, the open-plan kitchen, dining and living room is a thoroughly uplifting scene. Pale wood floors run underfoot, while a vaulted ceiling enhances the sense of volume, complete with exposed beams and generous skylights. A log-burning fireplace forms a cosy focal point in the living area, balanced by clean-lined mirrors and oversized display shelving that lend architectural definition to the space.

At one end, the kitchen is composed of whitewashed cabinetry and sleek integrated appliances, centred around a marble-topped breakfast bar illuminated by gilded pendant lights. Above, a mezzanine level provides a tranquil setting for home working or quiet reading.











On the ground floor, the principal bedroom suite is revealed behind a sliding pocket door. Dark wood flooring flows throughout and continues across Japanese-inspired lattice-fronted wardrobes, offering ample storage. A dedicated dressing room leads through to the en suite bathroom, complete with a rainfall shower and dual vanity.

On the lower-ground floor, two additional bedrooms are finished in a neutral palette, with natural light softly diffused through overhead skylights. A contemporary family bathroom completes the level, featuring micro-tiling that wraps around the bathtub and discreet integrated strip lighting.







WE FORGIVE

WE DREAM BIG

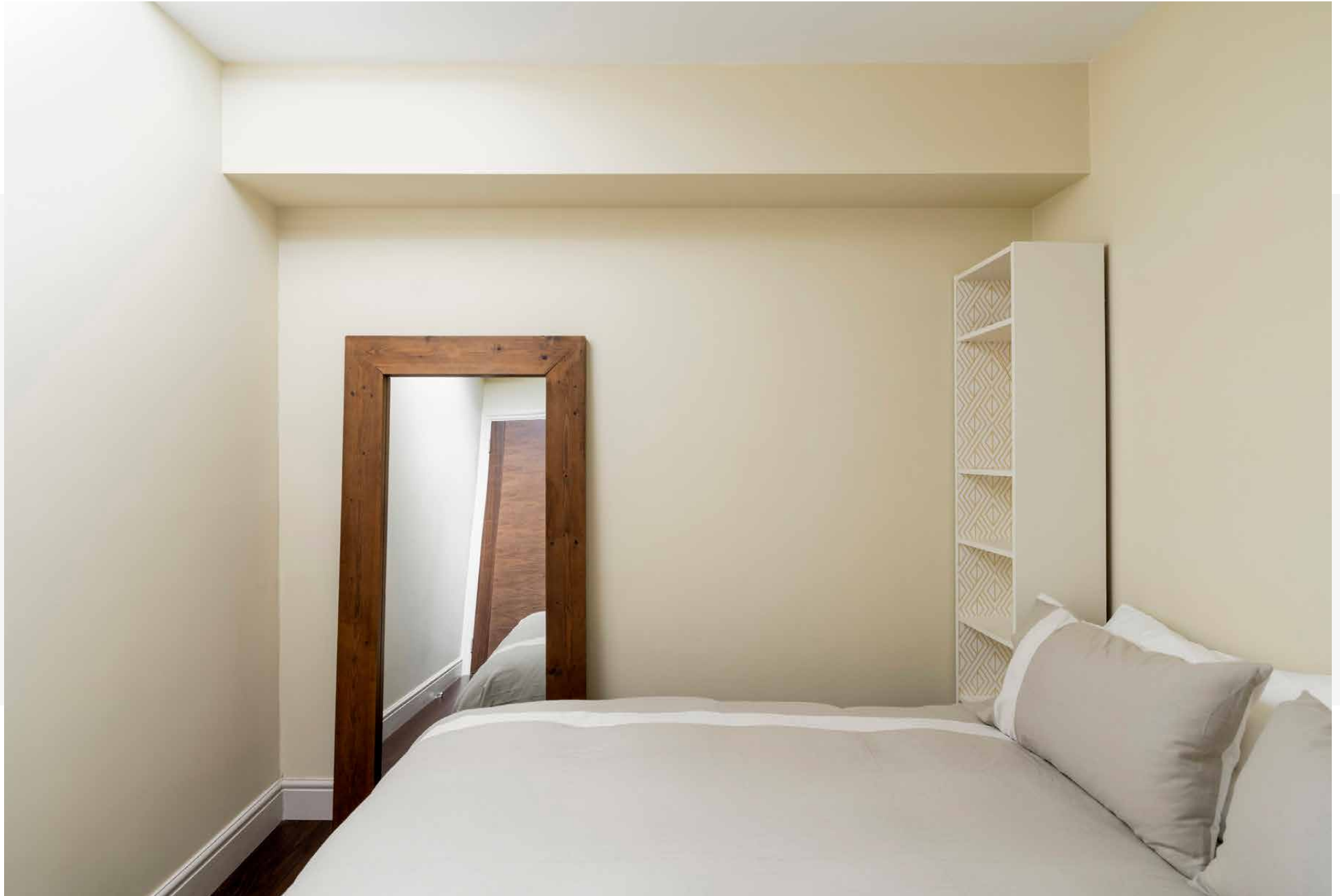
WE GIVE HUGS

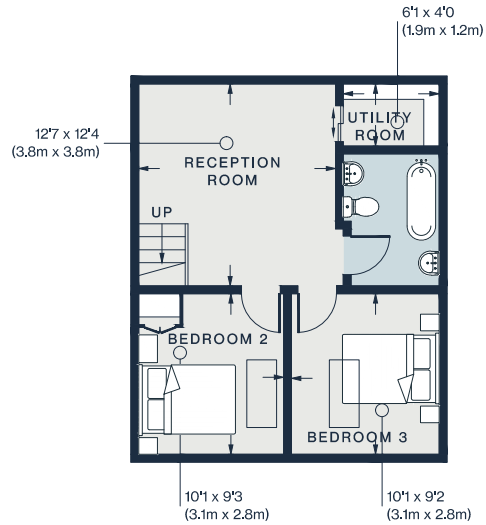
WE ARE GRATEFUL

WE HAVE FUN

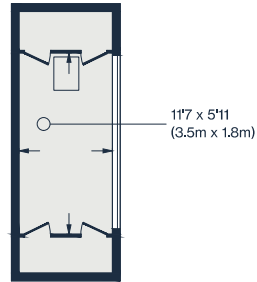
WE ARE HAPPY



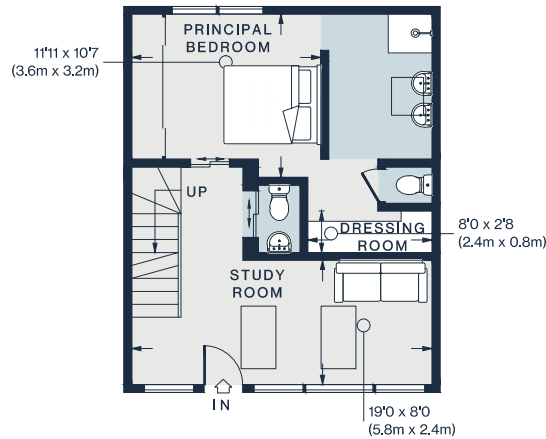




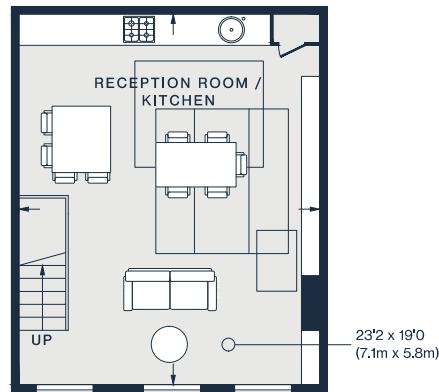
LOWER GROUND FLOOR



MEZZANINE



GROUND FLOOR



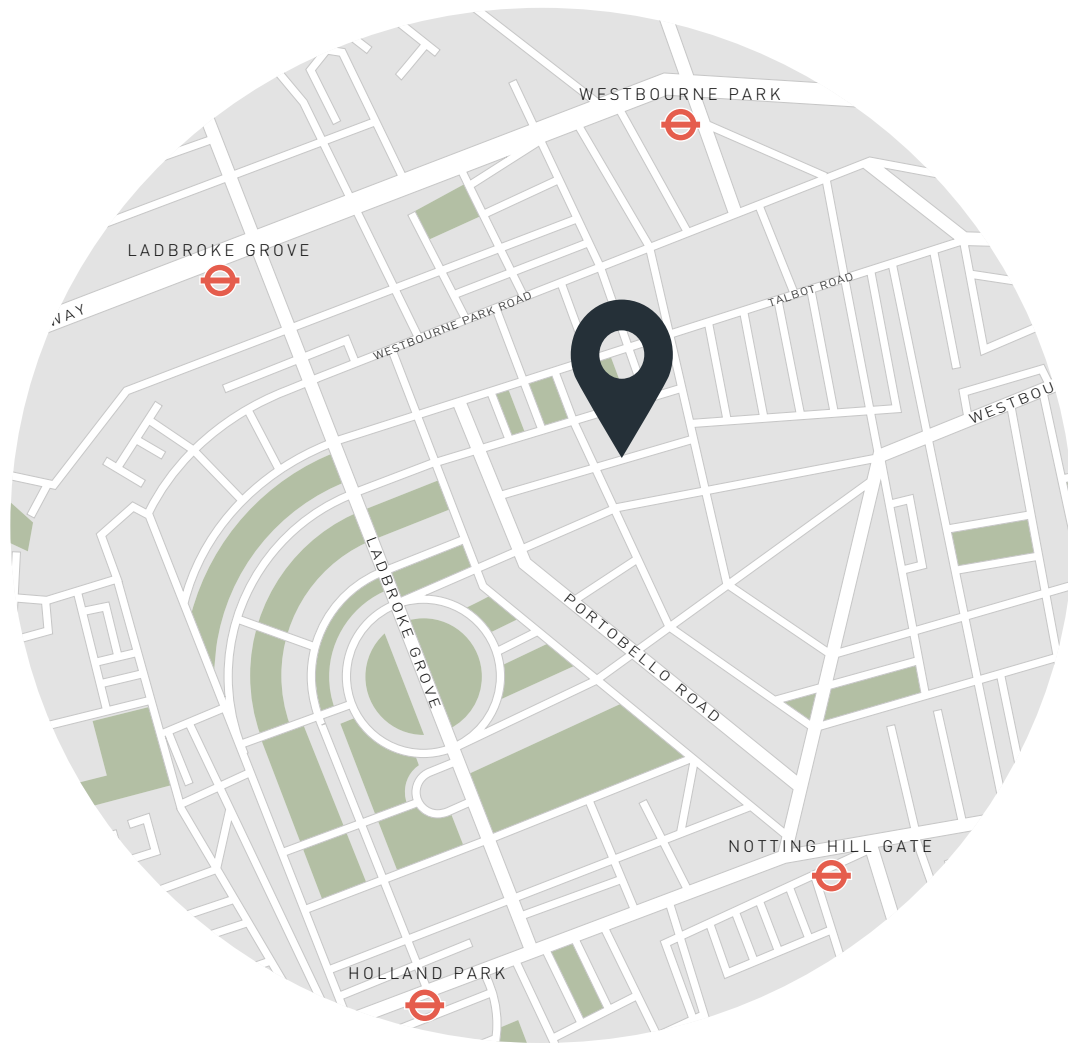
FIRST FLOOR

Lower Ground Floor = 435 sq ft / 40.2 sq m
 Ground Floor = 451 sq ft / 41.9 sq m
 First Floor = 440 sq ft / 40.9 sq m
 Mezzanine = 97 sq ft / 9.0 sq m
 Approx. Gross Internal Area = 1,423 sq ft / 132 sq m

Property Details

- 3 Bedrooms, 2 Bathrooms
- Open-plan kitchen, dining and living room
- Reception area
- Principal bedroom suite with dressing room
- Two guest bedrooms
- One guest bathroom
- Additional WC
- Mezzanine study
- Royal Borough of Kensington & Chelsea

Approx. 1,423 sq ft / 132 sq m
 EPC=C
 Deposit: £14,000 (SL)
 Council Tax Band: F



Location

The best of Notting Hill is on your doorstep at Colville Mews. Westbourne Grove is lined with upmarket boutiques, organic brunch spots and a host of wellness centres to kickstart your morning, while the iconic Portobello Road is within easy reach for antiques hunting. Source groceries from Daylesford Farm Shop or the Notting Hill Fish + Meat store, before strolling down to Kensington Gardens for peaceful walks. There's an abundance of fine dining in the area, from gastronomy favourites The Ledbury and Core by Clare Smyth, to beloved local pubs including The Pelican and The Cow. Complete an evening with a film at the Electric Cinema, and it's a short walk home.

Notting Hill Gate - 12 mins (Central, Circle, District)
Ladbroke Grove - 12 mins (Circle, Hammersmith & City)



Who ——— we are

Forward-thinkers in property, design and culture, we're an estate agency that hits refresh.

Domus Nova was born out of a desire to do things differently; to break the traditional agency model and focus on design-led homes in London and Ibiza, all while delivering the highest levels of personal service.

Our story starts in the nineties when we founded Notting Hill's first boutique agency – and we continue to open the doors to the most remarkable spaces, revealing them to our like-minded community.

We want to help you live better – and believe considered design can do that. That's why we remain committed to building on our legacy, in collaboration with BARNES International, an established agency with a market-leading presence in 22 countries.

Uniting our local insight and curated portfolio with BARNES International's expansive reach, we can facilitate the best opportunities in not only London and Ibiza, but also across Europe, the US and further afield – whether that's a château in the South of France, a penthouse in New York, or a chalet in the Swiss Alps.



DOMUS NOVA

Specialising in London
and Ibiza's design-led homes

Let's talk

020 7727 1717

lettings@domusnova.com

The property particulars are a guide not statements. Descriptions, photographs, and plans are for guidance and should be checked by the prospective tenant. The Property is offered "subject to contract and references". No warranties, representations, or Tenancy is given by Domus Nova. Expenses incurred by a prospective tenant will not be reimbursed if the Landlord withdraws prior to the Tenancy Agreement being signed, dated and exchanged and cleared funds received. Furniture and other items shown in a property at viewing may belong to a current tenant. The prospective tenant should verify in writing which fixtures and fittings forms part of the Tenancy. Our full lettings disclaimer together with trading names and our [Privacy Policy](#) is shown on our website

© 2025 Domus Nova in partnership with BARNES International. All rights reserved.

In partnership with
BARNES
INTERNATIONAL REALTY