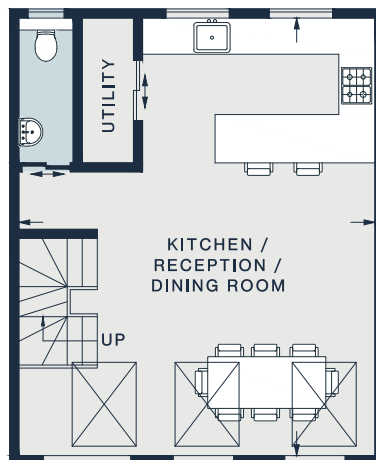
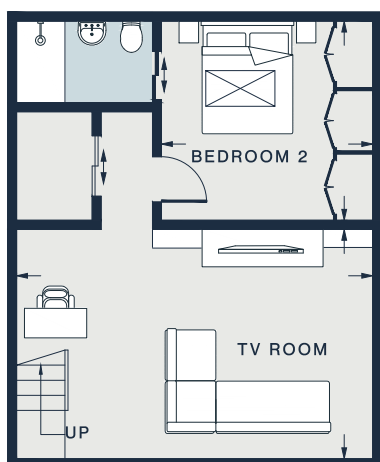


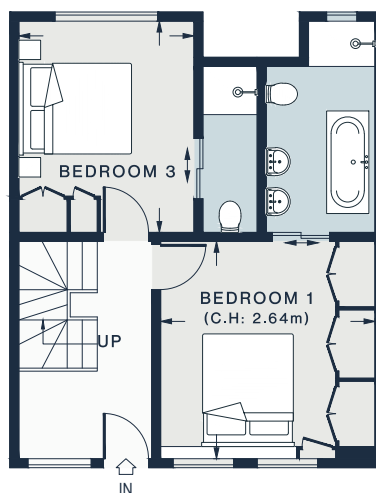
MEZZANINE



FIRST FLOOR



LOWER GROUND FLOOR



GROUND FLOOR

KITCHEN / RECEPTION /

DINING ROOM
23'7 x 19'0 (7.2m x 5.8m)

BEDROOM 1
12'1 x 11'7 (3.6m x 3.5m)

BEDROOM 2
11'7 x 10'8 (3.5m x 3.2m)

TV ROOM
19'0 x 12'3 (5.7m x 3.7m)

MEZZANINE
18'11 x 9'5 (5.7m x 2.8m)

BEDROOM 3
11'10 x 9'6 (3.6m x 2.8m)

Approx. Gross Internal Area = 1550 sq ft / 144 sq m
(Including Mezzanine)

Floor plans are for illustrative purposes only and not to scale. Compliant with RICS code of measuring practice. Furniture layouts are indicative only. This property may be furnished, part-furnished or unfurnished. Please refer to your agent for details.