

DOMUS NOVA



Colville Mews W11
£2,650,000



In the heart of Notting Hill, this three-bedroom mews house pairs modern interiors with a soul-soothing ambiance. A contemporary take on the traditional mews home, there's a refined feel to the pastel-grey façades of Colville Mews.

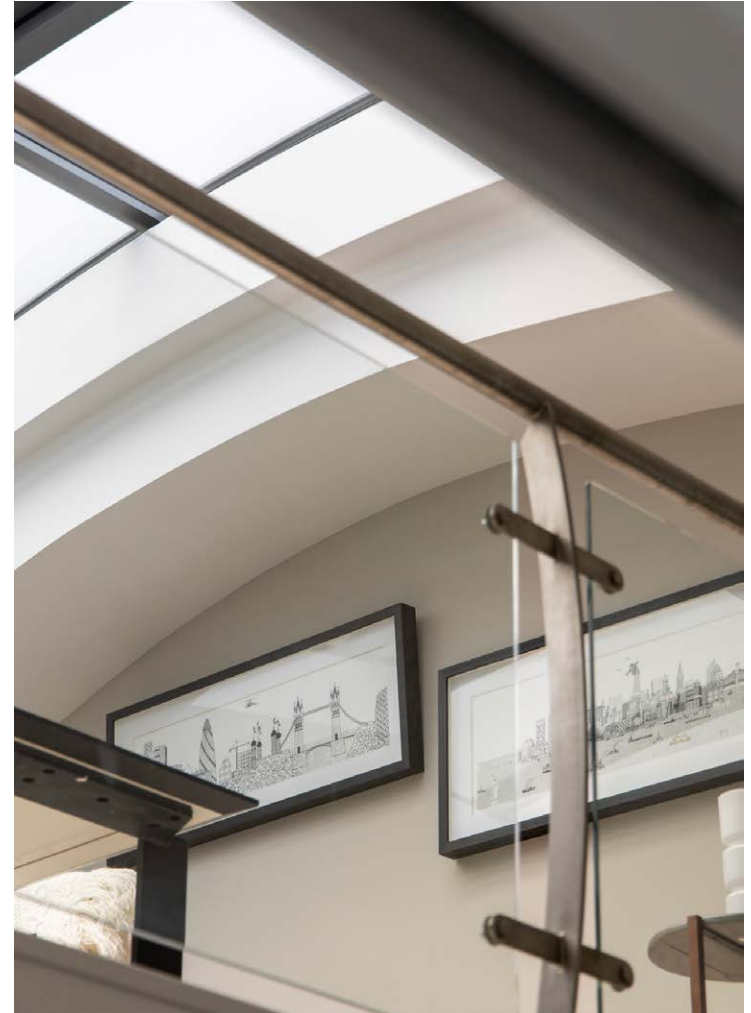
Making a sophisticated first impression, light wooden floors lead the way through to a sun-drenched haven of neutral hues. Characterised by clean lines and a pared-back aesthetic, a glossy L-shaped kitchen melds seamlessly into the space. Dark stone counters and stainless steel appliances bring a subtle contrast, while a portable island lends an effortless sense of versatility. Flooding reams of sunlight through the space, wraparound glazing creates a smooth connection with a generous dining area. From here, step through double doors to a tranquil private courtyard.

Ascending to the second floor reception room, soft tones set the stage for an interplay of light and space. Architectural interventions are used to striking effect, with a mezzanine level above creating a dropped ceiling in the centre of the space. The lounge area below enjoys an intimate ambiance, while dual aspect windows imbue the room with an uplifting light. Above, the versatile mezzanine capitalises on the curved ceiling, fitted with expansive skylights.













Set on the first floor, the generous principal bedroom suite is crafted with soothing materials and tones – gracefully illuminated by glass doors opening to a Juliet balcony. In the en suite bathroom, a walk-in rainfall shower comes wrapped in marble. Two further bedrooms enjoy a calming muted palette, served by a spacious family bathroom with a bathtub.

The home also benefits from a private garage.

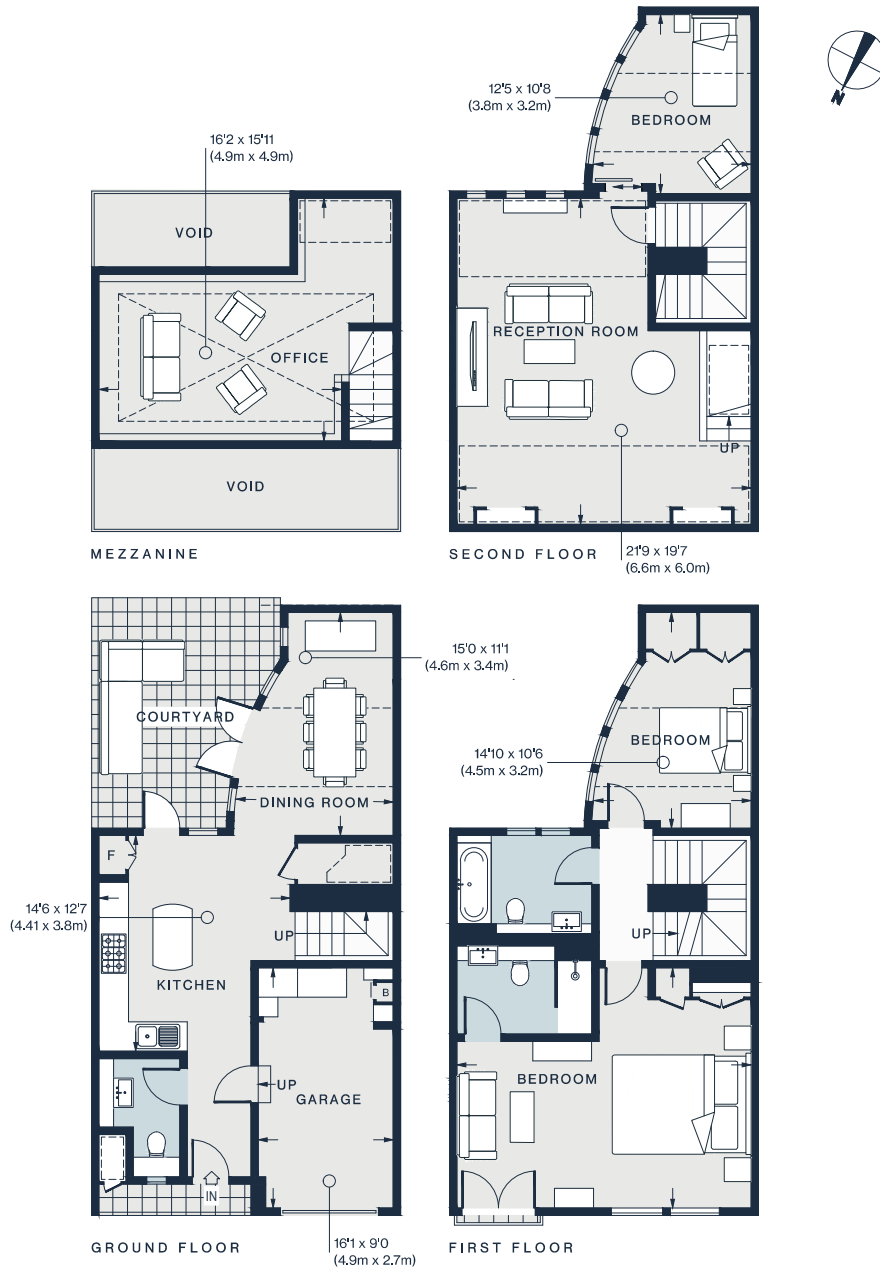










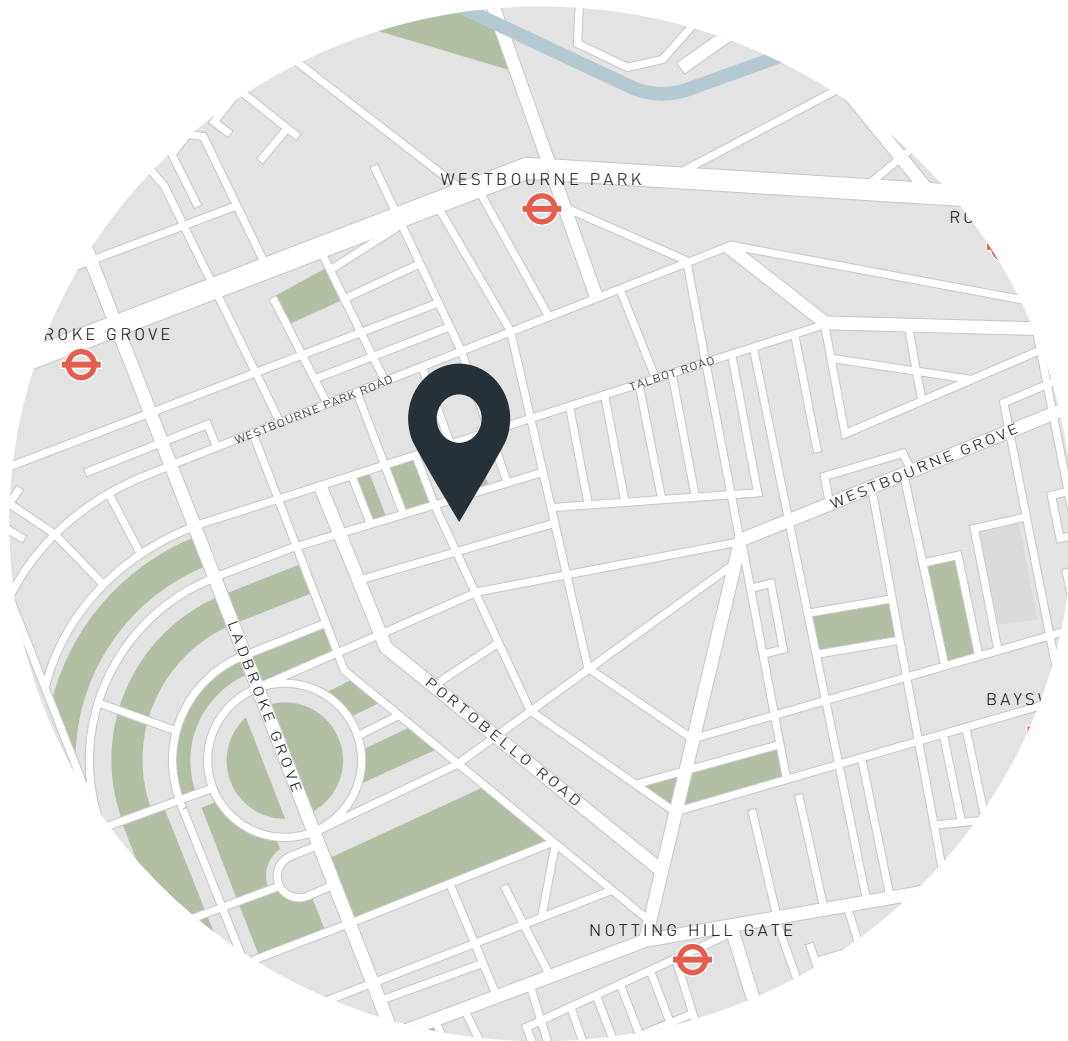


Approx. Gross Internal Area = 1,764 sq ft / 163.9 sq m
 Mezzanine Internal Area = 252 sq ft / 23.4 sq m
 Total = 2,016 sq ft / 187.3 sq m

Property Details

- Open-plan kitchen and dining room
- Reception room
- Versatile mezzanine reception room
- Principal bedroom suite
- Two guest bedrooms
- Family bathroom
- Cloakroom
- Courtyard
- Garage

Approx. 2,016 sq ft / 187.3 sq m
 EPC - C
 Council tax - H
 Freehold



Location

Just a walk away from Portobello Road, Colville Mews is a peaceful enclave with easy access to the action. Wake up with an invigorating workout at SoulCycle, or ease into things with a leisurely brunch at Farm Girl. Drop by Beam for an afternoon caffeine kick, picking up provisions from Daylesford Organic on the way back. Wander further south for the leafy lawns of Holland Park, or take a stroll through the antique and vintage offerings of Portobello Market. Complete the day with dinner at The Ledbury or Caractère.

Specialising in London
and Ibiza's design-led homes

Let's talk
020 7221 7817
sales@domusnova.com
domusnova.com

The particulars above are a guide, not an offer or contract. Descriptions, photographs and plans are not statements or representations of fact. Measurements are approximate and not to scale. Prospective purchasers must verify the accuracy of the information within the particulars. Domus Nova does not give any representations or warranties, nor represent the Seller legally. Domus Nova has no liability, for any costs, losses or expenses incurred by the Seller or a prospective buyer relating to the sales and buying transaction.

Our Sales Disclaimer, trading names and privacy policy on how your data is processed and used is found in full on our website in our [Privacy Statement](#).

© Domus Nova 2023. All rights reserved.