

DOMUS NOVA

Colville Gardens

Notting Hill W11

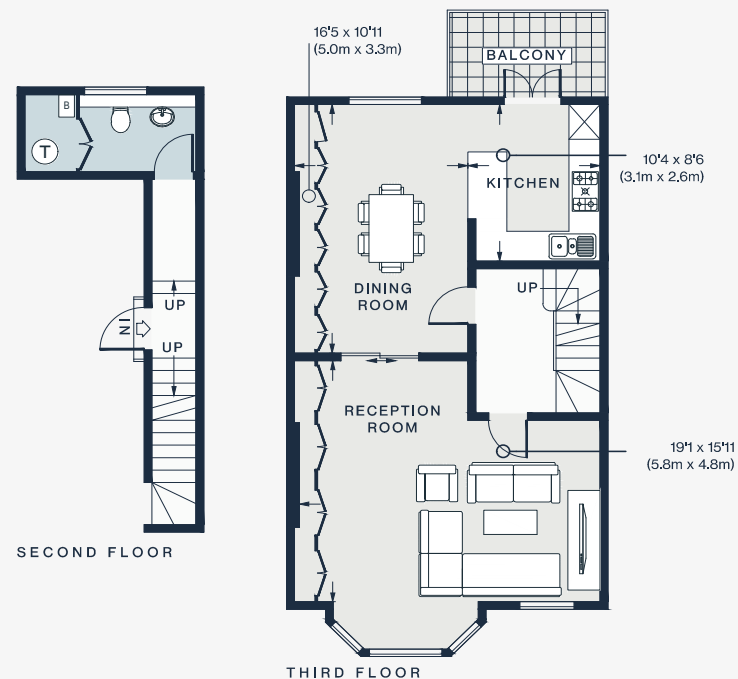
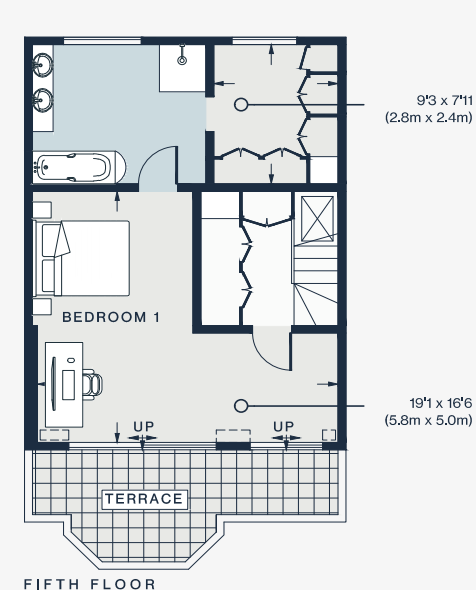
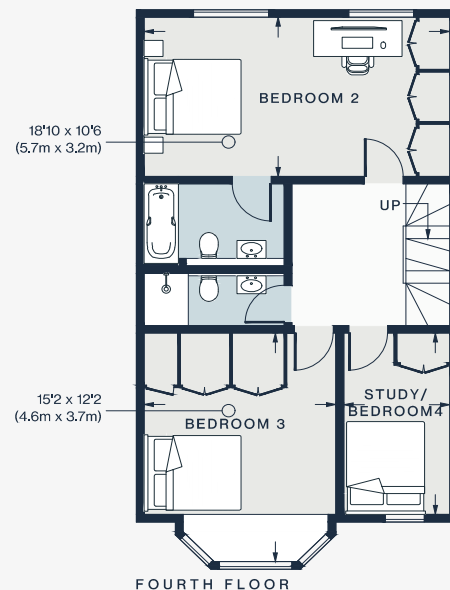
APPROXIMATE GROSS INTERNAL AREA

1,935 sq ft / 179.8 sq m

020 7727 1717

domusnova.com

LONDON | IBIZA



Approx. Gross Internal Area = 1,932 sq ft / 179.5 sq m
(Excluding Reduced Headroom)
Reduced Headroom = 3 sq ft / 0.3 sq m
Total = 1,935 sq ft / 179.8 sq m

Floor plans are for illustrative purposes only and not to scale. Compliant with RICS code of measuring practice. Furniture layouts are indicative only. This property may be furnished, part-furnished or unfurnished. Please refer to your agent for details.