

DOMUS NOVA



Cleveland Square W2
£3,995 p/w - Long Let



Palatial proportions and considered design infuse this five-bedroom home with a refined atmosphere.

Backing onto Cleveland Square gardens, this expansive duplex apartment draws together an array of sumptuous living spaces. From the raised ground floor entrance, the eye is instantly drawn to the open-plan kitchen and reception room. A trio of glass double doors soars toward the high ceiling, flooding the space with natural light that plays across brassy kitchen cabinetry.

Hardwood floors flow past a generous dining area and into the living space. This comfortable corner of the home is crowned with a sculptural halo chandelier. Backdropped by a teal feature wall, a fireplace grounds the space and serves as an elegant centrepiece. Outside, a south-facing terrace is bordered by a traditional Georgian balustrade and leads down to the communal garden square.









Through a library with chequered flagstone flooring, the plan unfolds to reveal a voluminous principal bedroom. Large windows draw in daylight to illuminate thoughtful design details.

Bespoke joinery and full-height fitted wardrobes create a sense of seamless sophistication. Framed by ornate cornicing, the high ceiling creates an uplifting feel. Beyond, an en suite bathroom features a walk-in rainfall shower, freestanding bath and a dual vanity.

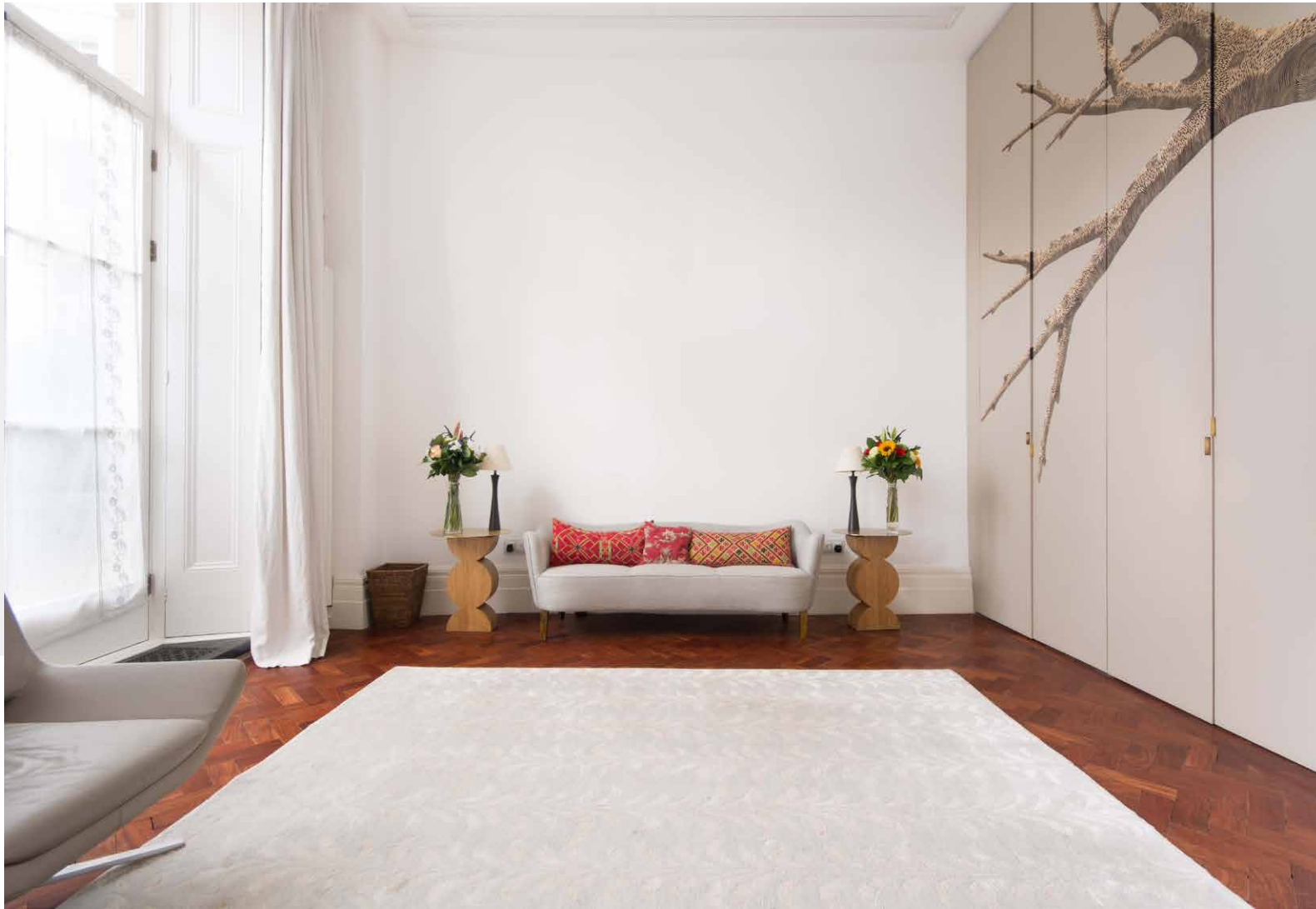


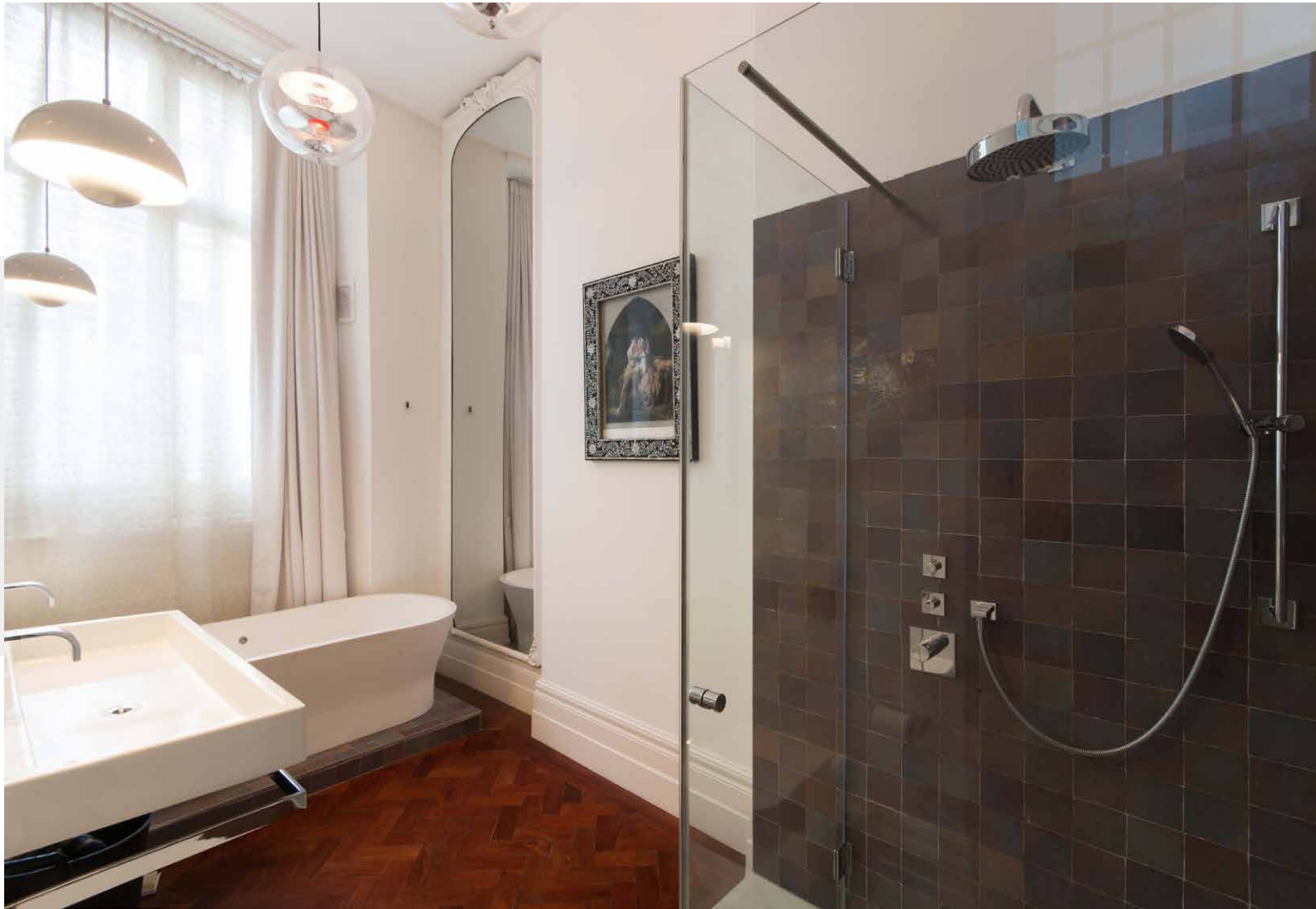


Four downstairs bedrooms feature neutral tones, fitted storage and period features. A family bathroom has a freestanding bath with an integrated rainfall shower. This level also features a split-level open-plan kitchen and reception room.

A minimalistic galley kitchen enjoys whitewashed cabinetry and integrated appliances. Pale wood floors stretch through to the dining space. Meanwhile, floor-to-ceiling glass doors pour light into the living area and lead out to a quiet courtyard.



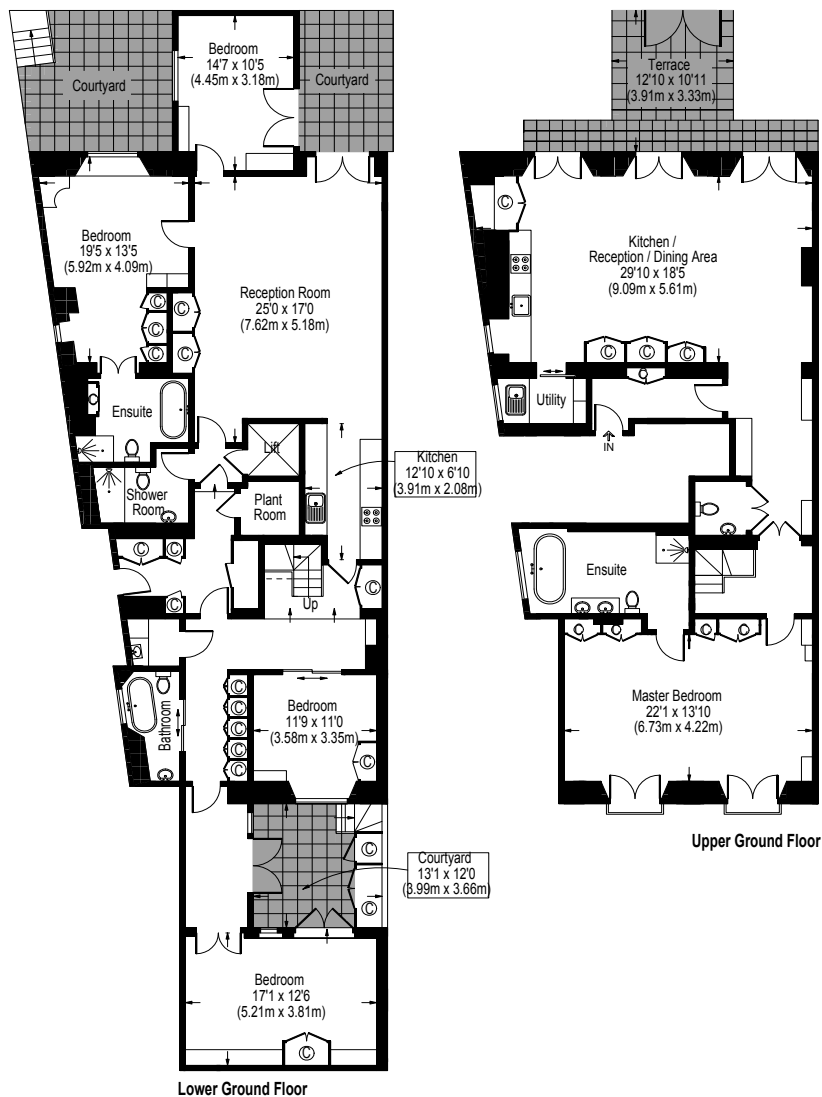












Property Details

- Open-plan kitchen and reception room
- One further kitchen and reception room
- Principal bedroom suite
- Four further bedrooms
- Four bathrooms
- Several outside areas
- Communal garden access
- Utility room
- Direct lift access to lower level
- Royal Borough of Kensington & Chelsea

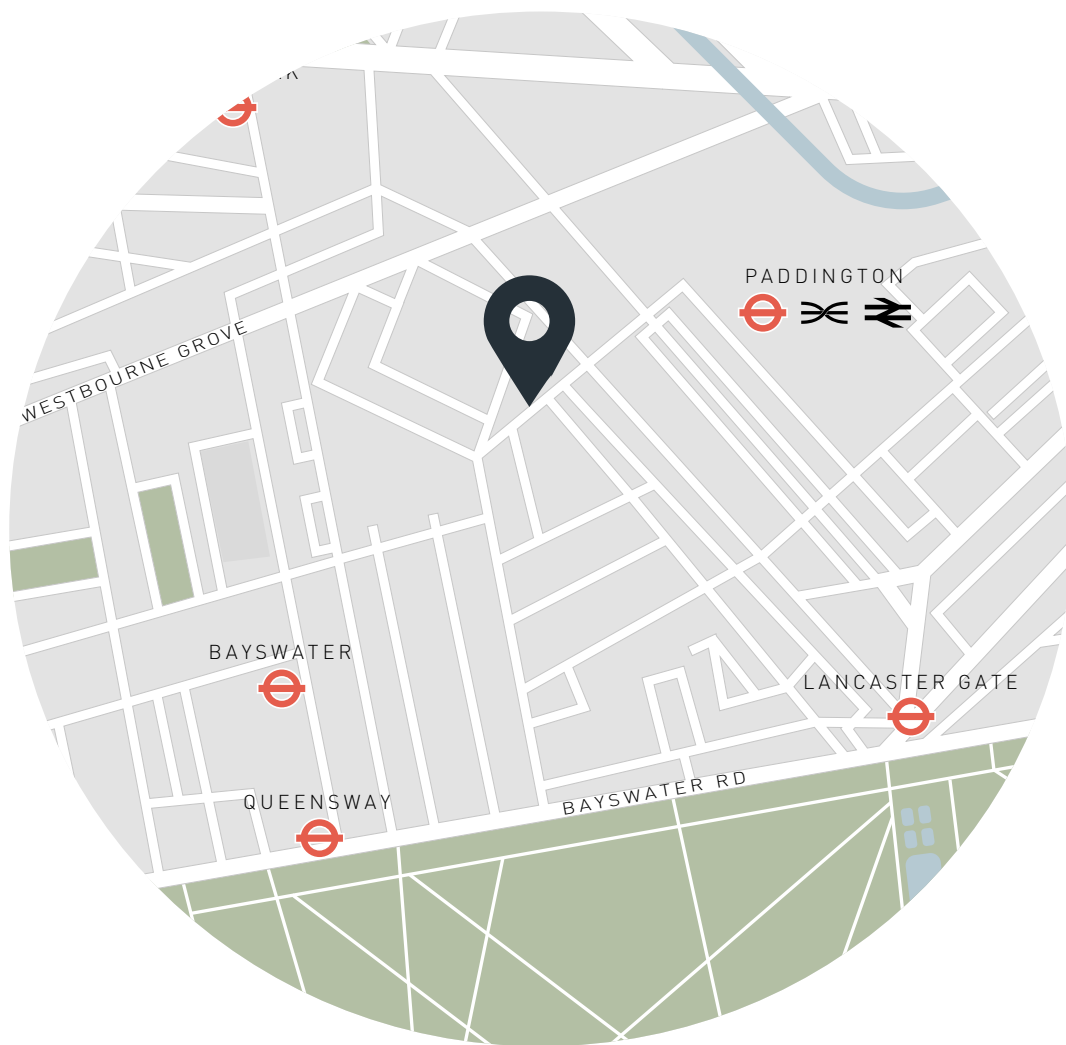
Approx 3,274 sq ft / 304.2 sq m

EPC - D

Deposit Payable - £23,970

Approximate Gross Internal Area 3274 Sq.Ft. / 304.15 Sq.M.

Floor Plans are for illustrative purposes only and not to scale.
Compliant with RICS code of measuring practice.



Location

With manicured flower beds, mature plum trees and a strong sense of community, Cleveland Square is one of London's most sought-after communal gardens. Hyde Park is within a 10-minute walk, as are the bars and boutiques of Westbourne Grove and Little Venice. The area also plays host to some of London's best restaurants. For Michelin-starred cuisine, head to The Ledbury or Core by Clare Smyth. Paddington station is also an eight-minute walk away, meaning the city is within easy reach.

Nearest tube:

Paddington - 8 mins

Queensway - 10 mins

Specialising in London
and Ibiza's design-led homes

Let's talk
020 7727 1717
lettings@domusnova.com
domusnova.com

The property particulars are a guide not statements. Descriptions, photographs, and plans are for guidance and should be checked by the prospective tenant. The Property is offered "subject to contract and references". No warranties, representations, or Tenancy is given by Domus Nova. Expenses incurred by a prospective tenant will not be reimbursed if the Landlord withdraws prior to the Tenancy Agreement being signed, dated and exchanged and cleared funds received. Furniture and other items shown in a property at viewing may belong to a current tenant. The prospective tenant should verify in writing which fixtures and fittings forms part of the Tenancy. Our full lettings disclaimer together with trading names and our [Privacy Policy](#) is shown on our website