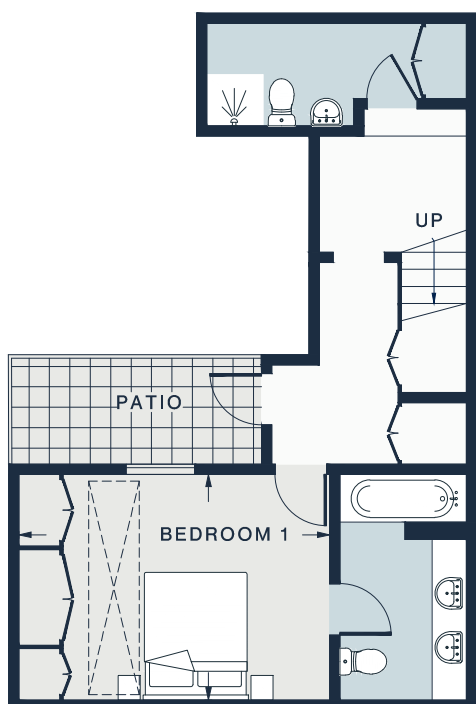
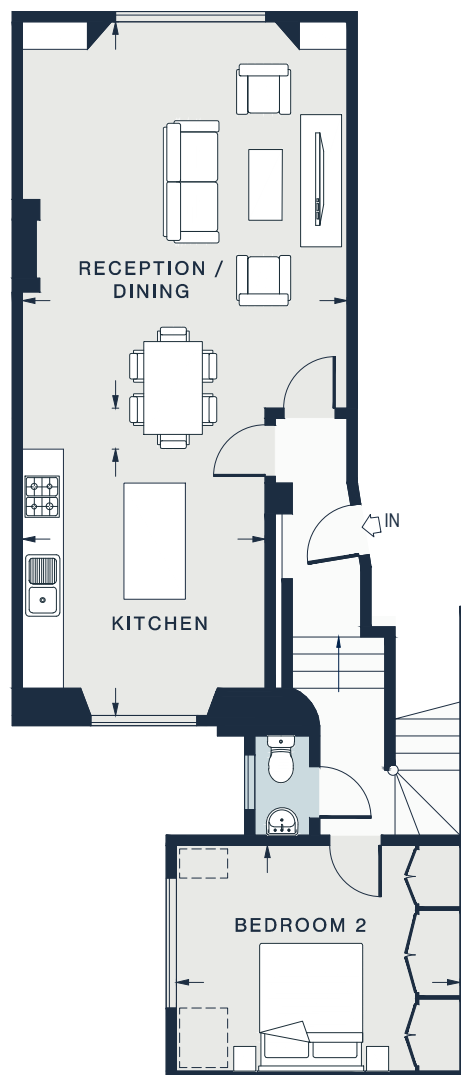




 = Reduced head height below 1.5m



LOWER GROUND FLOOR



RAISED GROUND FLOOR

BEDROOM 1

13'9 x 10'10 (4.5m x 3.3m)

RECEPTION / DINING

18'4 x 15'5 (5.5m x 4.7m)

BEDROOM 2

13'9 x 11'0 (4.1m x 3.3m)

KITCHEN

12'10 x 12'1 (3.9m x 3.6m)

Approx. Gross Internal Area = 1195 sq ft / 111.0 sq m

Floor plans are for illustrative purposes only and not to scale. Compliant with RICS code of measuring practice.