

# DOMUS NOVA



Chevening Road, NW6  
£5,000,000



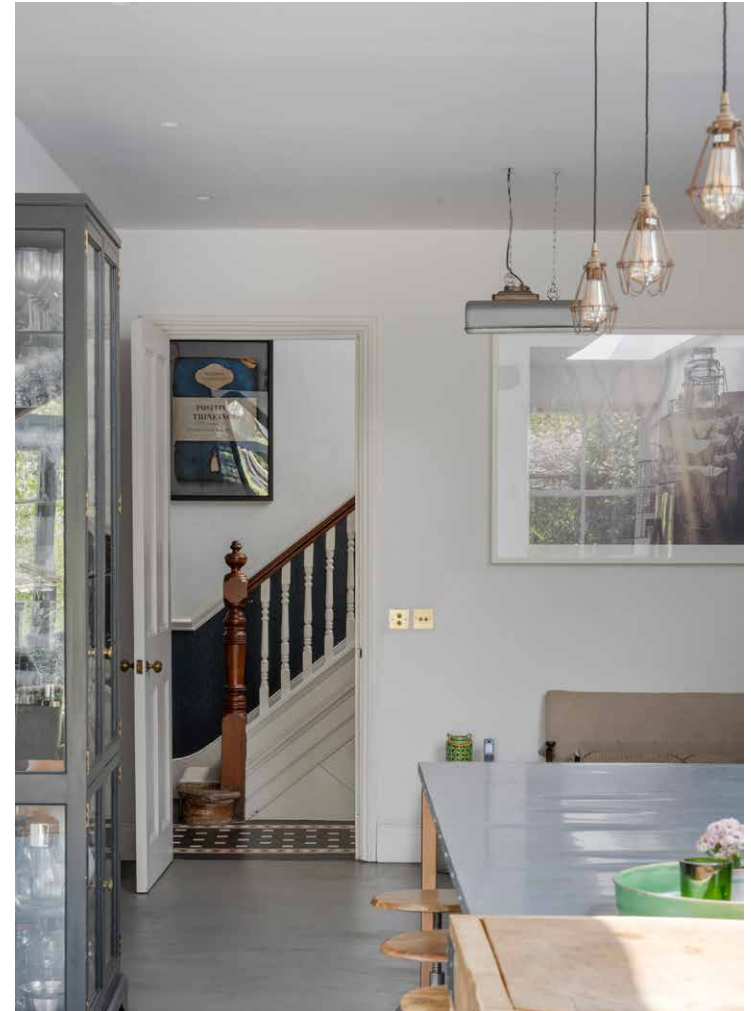


Beyond its timeless Edwardian exterior, this six-bedroom family home exudes creativity in its use of materials, space and light. Thanks to the innovative architectural eye of Nick Cross, Chevening Road's elegant period framework has been reworked with a striking industrial edge and an uplifting tonal palette.

Facing the iconic Queen's Park, and nestled behind a cascade of wisteria and red brickwork, the home makes a charming first impression. An entrance hallway is laid with original Victorian mosaic tiling and illuminated by a series of pendant lights. To the right, a cloakroom provides ample storage. To the left, the formal reception room has a modish atmosphere with dark Farrow & Ball Railings paint across the walls and floors. Sunlight is filtered inside through bay windows; its bespoke shutters are engineered with decorated stained glass, creating patterns across the herringbone wood floors.







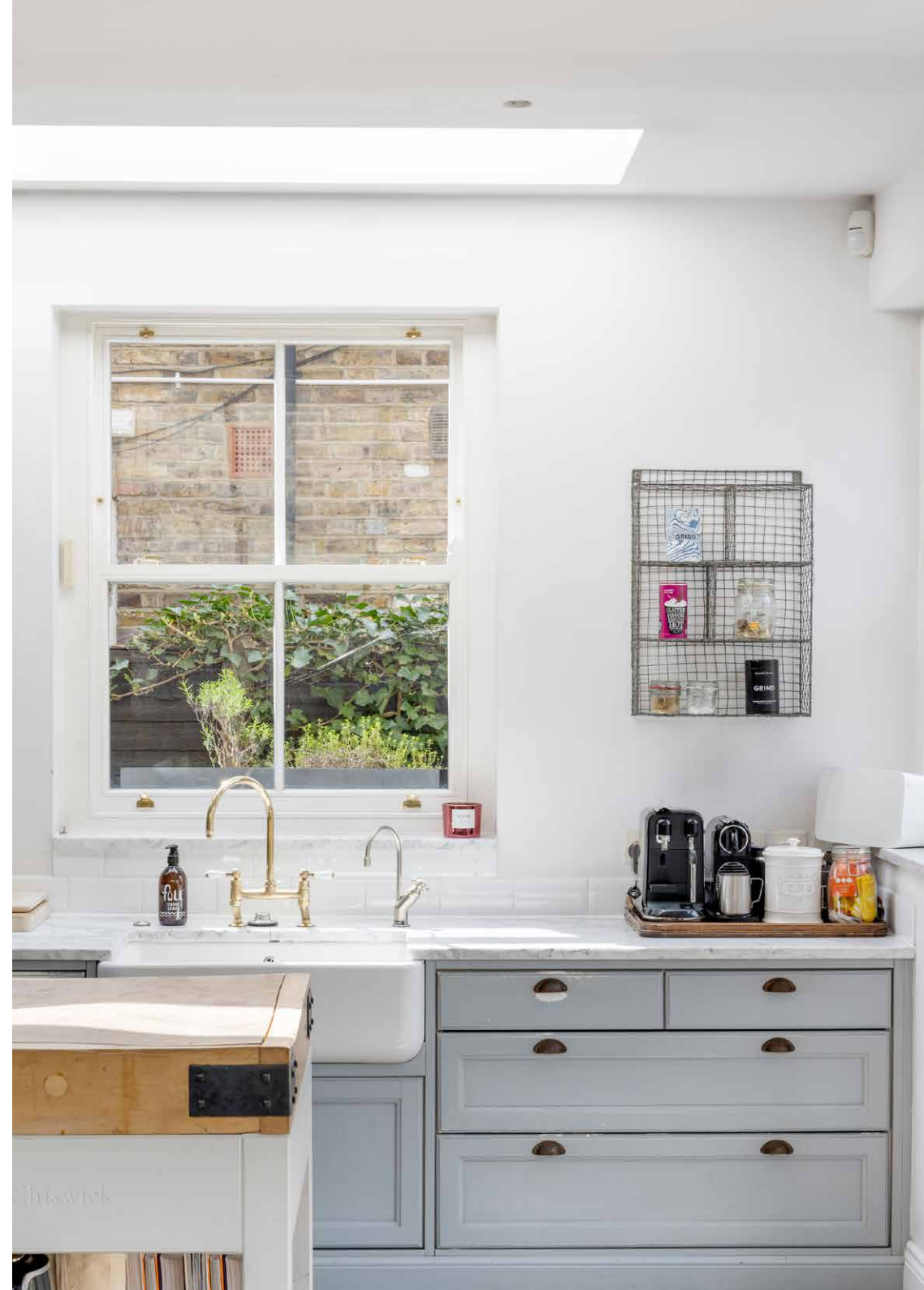




Continue through to the open-plan kitchen and dining room, where refined interior design plays out across an expansive footprint. The bespoke kitchen is crafted with shaker-style cabinets – painted in Farrow & Ball Manor House Grey – handmade glass cabinets and sleek marble surfaces. Appliances are suitably ergonomic, including a Rangemaster oven, a Quooker tap and butler sink. Opposite, a side extension is crowned with a large glass roof, beaming light down to an eating area. A wall of exposed brickwork brings an engaging materiality to the space.

Set behind Crittall windows, an additional sitting room enjoys all the natural light of the kitchen, but feels contained for its use as a quiet study and cosy living space – complete with its log woodburner and integrated bookshelves. Social life continues on the lower-ground floor, with a dedicated cinema room painted in a richly-toned Little Greene Cordoba.

An awe-inspiring conservatory extension epitomises indoor-outdoor living, with a soaring glass roof that floods the space with natural light. Double doors open onto the patio – perfect for warm-weather entertaining. Beyond, the private garden is an oasis of greenery, thanks to the creative eye of landscaper Romana di Suvero. A long stretch of lawn is bordered by blooming flower beds and mature trees; when daylight fades, there's a host of festoon and fairy lighting to cast a warm glow. An archway leads through to a shaded eating and lounge area, with a bricked floor interspersed with planters and a wood-fired hot tub for year-round relaxation.









WELCOME  
TO  
TWENTY  
TWENTY  
THRIVE  
FOLKS  
2025





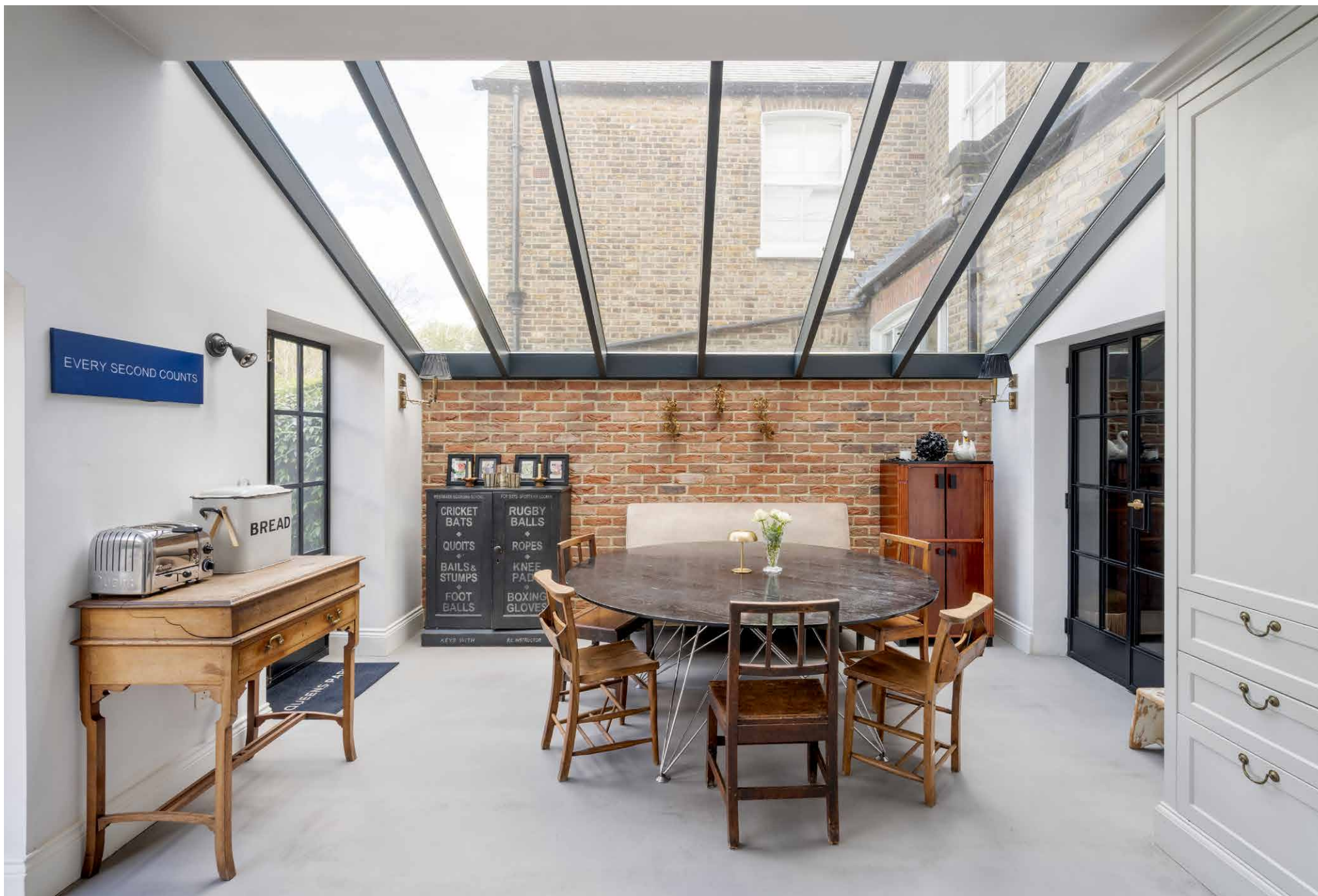
“ An awe-inspiring conservatory extension epitomises indoor-outdoor living, with a soaring glass roof that floods the space with natural light.

































Things take a sophisticated turn in the first floor principal bedroom suite. Pale carpet spans the floors, while Cole & Son wallpaper is brightened with light from three original sash windows. A curved arch leads into the en suite bathroom, with an elegant roll top bathtub, a bespoke marble steam shower and freestanding sink – plus a walk-in wardrobe.

Completing the first floor are three additional bedrooms and a guest bathroom by Mortex, with Moroccan sand stone walls that neatly curve round into a rainfall shower.

Wood floors, exposed brickwork and a vaulted ceiling brings loft-like appeal to the second floor bedroom suite – which could be reimagined as a studio space, with its reams of natural light. On the lower-ground floor, an additional guest bedroom suite completes the property.













TFLIX







## Property Details

Architecture by Nick Cross Design

Formal reception room

Open-plan kitchen and dining room

Sitting room

Television room

Principal bedroom suite with walk-in wardrobe

Two guest bedroom suites

Two further bedrooms

Utility room

Cloakroom

Front garden with off-street parking

Private landscaped garden by Romana di Suvero

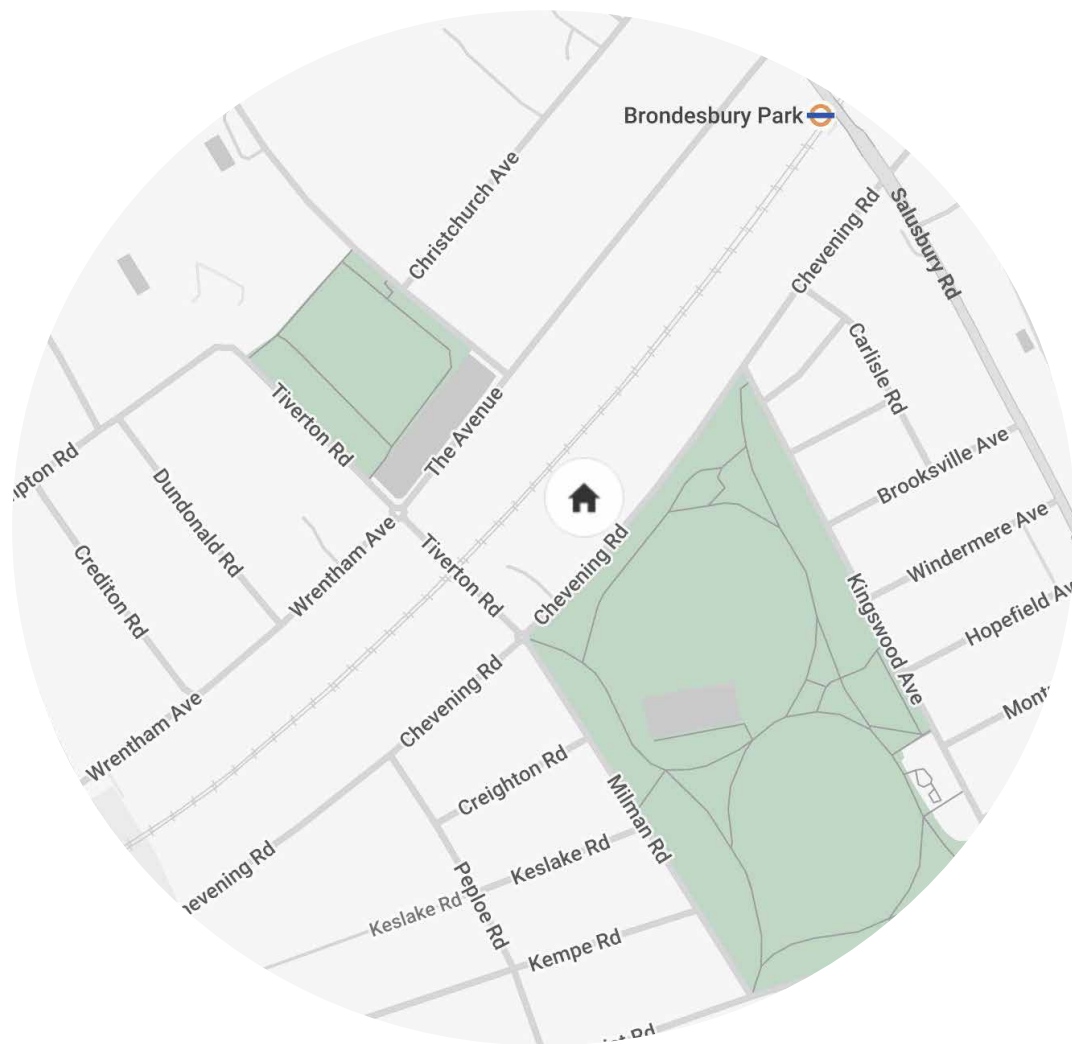
Approx. 4,185 sq ft / 388.8 sq m

EPC=D

Tenure: Freehold

Council Tax Band: G





## Location

A lively hub for families and creatives alike, this peaceful residential spot in Queen's Park offers a reprieve from bustling city life. Just minutes from your door, head to the eponymous park – complete with a golf range, tennis courts, adventure playground and children's zoo. Sandwiched between the independent shops and cafes of Chamberlayne and Salusbury Road, you're spoilt for choice when it comes to dining options: local favourites include Milk Beach, Don't Tell Dad and Michiko Sushino. Come evening, stop by The Lexi, a coveted independent cinema. The neighbourhood gets together on weekends at the famed Queen's Park Farmers Market, replete with local produce and artisanal offerings.

Kensal Rise – 4 mins

Queen's Park – 10 mins



Specialising in London  
and Ibiza's design-led homes

Let's talk  
020 7221 7817  
sales@domusnova.com  
domusnova.com

The particulars above are a guide, not an offer or contract. Descriptions, photographs and plans are not statements or representations of fact. Measurements are approximate and not to scale. Prospective purchasers must verify the accuracy of the information within the particulars. Domus Nova does not give any representations or warranties; nor represent the Seller legally. Domus Nova has no liability, for any costs, losses or expenses incurred by the Seller or a prospective buyer relating to the sales and buying transaction.

Our Sales Disclaimer, trading names and privacy policy on how your data is processed and used is found in full on our website in our [Privacy Statement](#).

© Domus Nova 2025. All rights reserved.