

# DOMUS NOVA



Chevening Road NW6  
£3,250,000



Inspiring at every turn, this character-filled four-bedroom home for sale sits in the leafy heart of Queen's Park.

Imbued with imagination, this four-bedroom home exudes creative spirit beyond its traditional exterior. Brought to life by Swedish interior aficionado Beata Heuman, every room appears enriched with a *mélange* of materials and tones.

Inside, vintage brass doors draw back to a bright double reception room. A refreshing interplay of old and new, a muted palette draws attention to historical features – from impressive period proportions to an original carved stone mantel. A large bay window draws an animated air inside, channelling light through the adjoining area. Immersed in playful orange pattern, this tranquil setting effortlessly uplifts.

Arranged across the rear of the home, a sky-lit kitchen and dining room embodies an alfresco feeling. Designed with culinary enthusiasts in mind, an imposing stainless-steel island pairs with smooth stone worktops and a Rangemaster oven. Descend from here to a light flooded sunroom, where mosaic-style terracotta tiles extend into the garden.

















A custom-made runner adorns the stairs to the first floor, where a spacious principal bedroom suite enjoys a restful character, plus an intimate balcony. Woven wallpaper deftly melds fitted wardrobes with the space, flanking the entrance to a considered en suite. Complete with micro-concrete water-proof walls, this bathroom features a Masharabiya-inspired vanity and a freestanding bathtub.

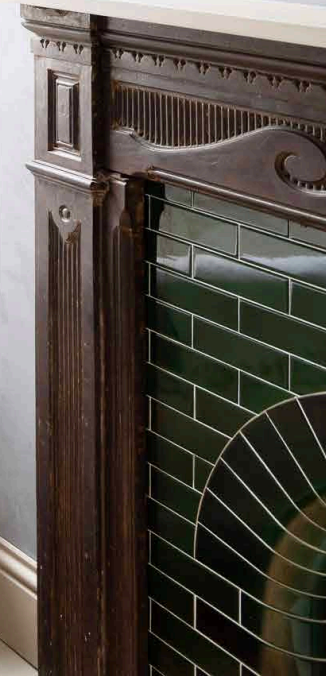
Two further bedrooms sit across this level, one uplifting in pink, the other peaceful in an olive pattern wallpaper. Serving these bedrooms, discover a family bathroom injected with playful flair. Think soft teal accents, marble adornments and a bathtub backdropped by a jungle mosaic. At the top of the home, a sage green bedroom sits alongside a sky-lit shower room.











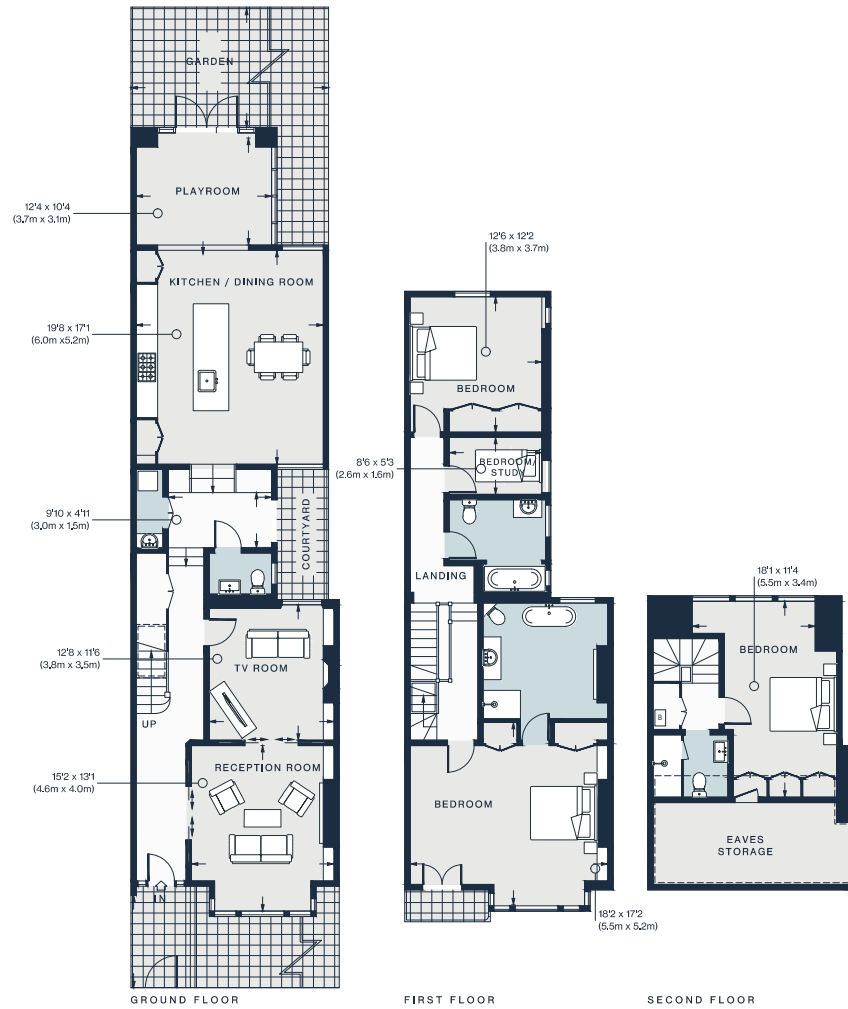












## Property Details

- Open-plan kitchen and dining room
- Double reception room
- Family room
- Principal bedroom suite with balcony
- Three further bedrooms
- Shower room
- Family bathroom
- Private garden
- Terrace

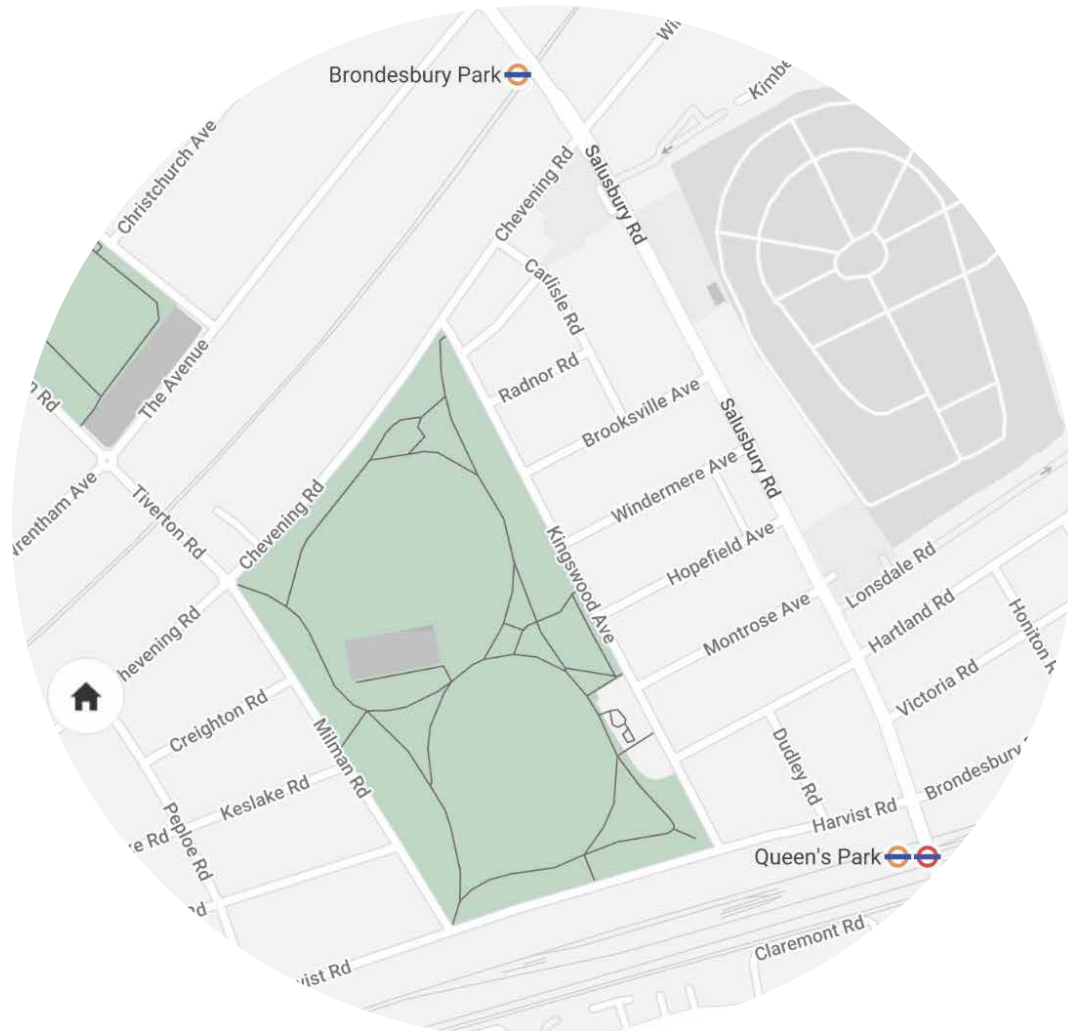
Approx. 2,400 sq ft / 223 sq m

EPC - D

Tenure: Freehold

Approx. Gross Internal Area = 2400 sq ft / 223 sq m

Floor plans are for illustrative purposes only and not to scale. Compliant with RICS code of measuring practice.



## Location

An upbeat hub for families and creatives alike, this peaceful residential spot in Queen's Park offers a reprieve from bustling city life. Just minutes from your door, grab a caffeine kick from Ciullo's before heading to the park for a leisurely stroll. On more active afternoons, take your rackets along to the tennis courts. Stop by Michiko Sushino or Milk Beach to refuel. Spend an evening at The Lexi, a coveted independent cinema.

Kensal Rise – 4 mins (Overground)

Queen's Park – 14 mins (Overground, Bakerloo)

Specialising in London  
and Ibiza's design-led homes

Let's talk  
020 7221 7817  
sales@domusnova.com  
domusnova.com

The particulars above are a guide, not an offer or contract. Descriptions, photographs and plans are not statements or representations of fact. Measurements are approximate and not to scale. Prospective purchasers must verify the accuracy of the information within the particulars. Domus Nova does not give any representations or warranties; nor represent the Seller legally. Domus Nova has no liability, for any costs, losses or expenses incurred by the Seller or a prospective buyer relating to the sales and buying transaction.

Our Sales Disclaimer, trading names and privacy policy on how your data is processed and used is found in full on our website in our [Privacy Statement](#).

© Domus Nova 2024. All rights reserved.