

# DOMUS NOVA



Chevening Road NW6  
£5,250,000



An ode to rustic minimalism in Queen's Park, this four-bedroom family home for sale presents a fusion of organic textures and earthy tones.

Beyond a thoroughly Edwardian exterior, an aesthetic rooted in nature unravels across Chevening Road's four floors. Designed with a North African-inspired edge, rich hues pair with reclaimed materials.

Inside, a reconfigured plan allows for a sprawling reception room filled with light. A bespoke stone fireplace establishes an arresting talking point for the lounge, while a transom window illuminates an informal dining space to the rear. Cleverly connected, step down from here to the open-plan kitchen and reception room. Crafted to cater to family life, a split-level layout designates areas to cook, dine and entertain. Tactile materials are used to striking effect – reclaimed wood, Arabescato marble, and deep navy cabinetry combine to form both the kitchen and bar. Across the lower setting, three further skylights and a rear glass wall introduce a calming inside-out quality.

In the garden, a showpiece of urban landscape design unfolds. Past a manicured lawn and vegetable plot, a versatile garden room awaits. Complete with a WC, this space can be imagined as a gym, home office or creative studio.











“ Tactile materials are used to striking effect – reclaimed wood, Arabescato marble, and deep navy cabinetry combine to form both the kitchen and bar.



















The colour palette takes a softer turn upstairs, where a spacious principal bedroom suite effortlessly calms. Sash windows cast light across an in-room bathtub, while double doors adjacent draw back to a Juliet balcony. In the en suite, peachy hues adorn a walk-in shower and dual vanity. Three further bedrooms are considered and calming, each served by contemporary shower rooms. Situated between bedrooms on the first floor, a nook hosts built-in bunk beds for occasional guests.

Found on the lower ground floor, a rustic-style cinema room invites cosy evenings in and movie marathons.













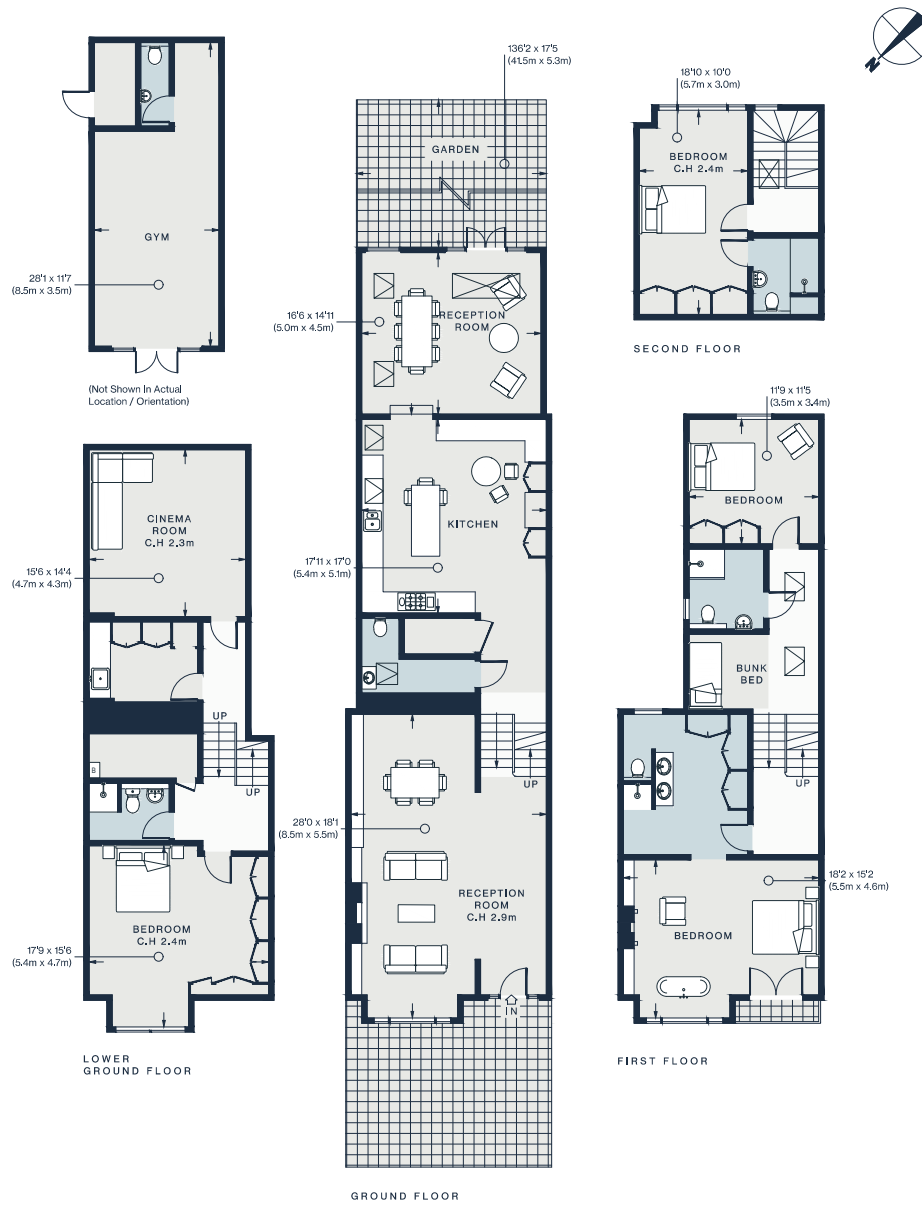












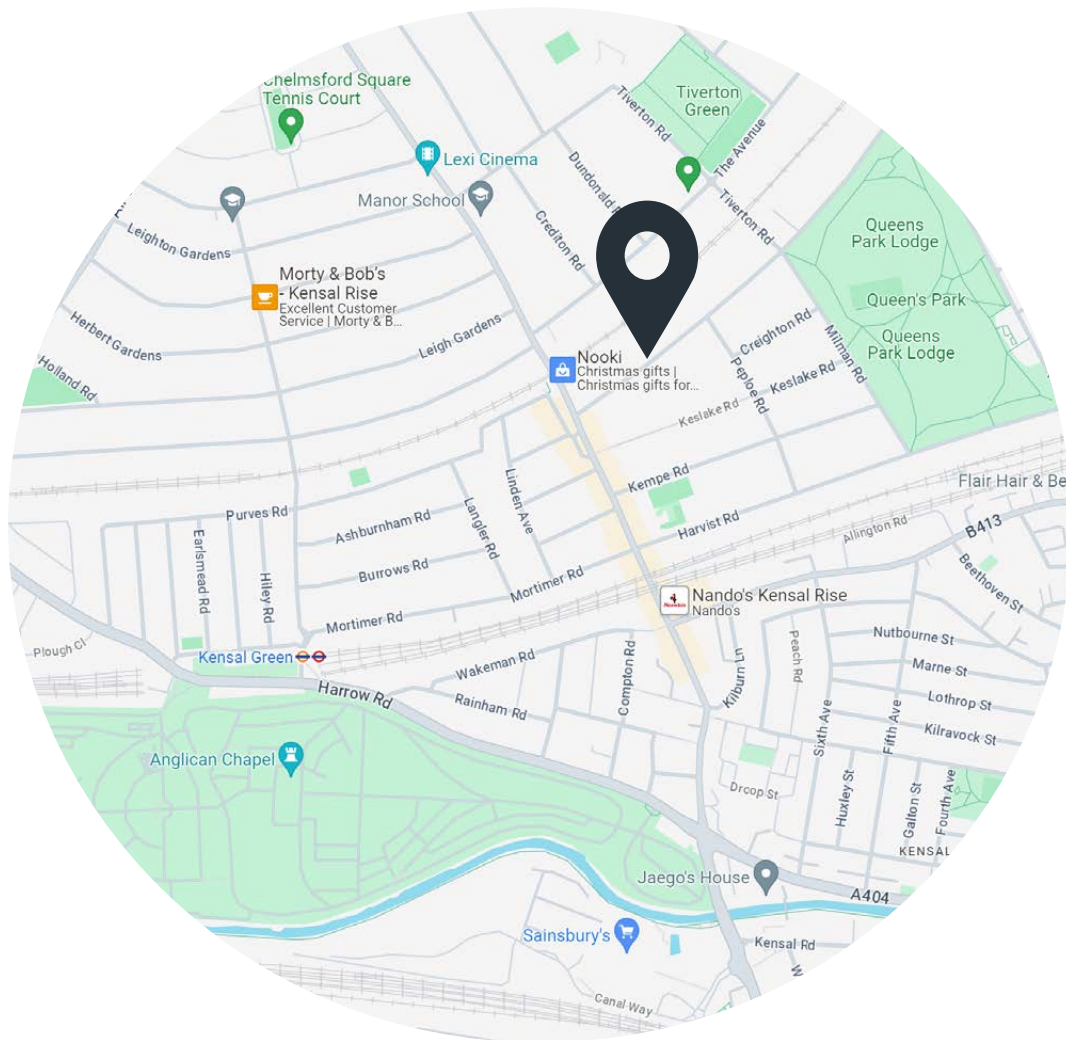
Approx. Gross Internal Area = 3128 sq ft / 290.5 sq m  
 Outbuilding = 317 sq ft / 29.5 sq m  
 Total = 3445 sq ft / 320 sq m

Floor plans are for illustrative purposes only and not to scale. Compliant with RICS code of measuring practice.

## Property Details

- Open-plan reception and dining room
- Contemporary kitchen
- Additional reception room
- Principal bedroom suite
- Guest bedroom suite
- Two further bedrooms
- Two shower rooms
- Cinema room
- Gym
- Utility room
- Private garden

Approx. 3,445 sq ft / 320 sq m  
 EPC - C  
 Tenure: Freehold  
 Council Tax Band: D



## Location

A lively hub for families and creatives alike, this peaceful residential spot in Queen's Park offers a reprieve from bustling city life. Just minutes from your door, grab a caffeine kick from Ciullo's before heading to the park for a leisurely stroll. On more active afternoons, take your rackets along to the tennis courts. Stop by Michiko Sushino or Milk Beach to refuel. Spend an evening at The Lexi, a coveted independent cinema.

Kensal Rise – 3 mins (Overground)

Queen's Park – 14 mins (Bakerloo, Overground)

Specialising in London  
and Ibiza's design-led homes

Let's talk  
020 7221 7817  
sales@domusnova.com  
domusnova.com

The particulars above are a guide, not an offer or contract. Descriptions, photographs and plans are not statements or representations of fact. Measurements are approximate and not to scale. Prospective purchasers must verify the accuracy of the information within the particulars. Domus Nova does not give any representations or warranties; nor represent the Seller legally. Domus Nova has no liability, for any costs, losses or expenses incurred by the Seller or a prospective buyer relating to the sales and buying transaction.

Our Sales Disclaimer, trading names and privacy policy on how your data is processed and used is found in full on our website in our [Privacy Statement](#).

© Domus Nova 2024. All rights reserved.