

# DOMUS NOVA



Chevening Road NW6  
£3,250,000



A collision of daring design and dazzling tones brings an animated air to this home in Queen's Park. Envisioned with an eclectic eye for detail, Chevening Road's Victorian framework comes enhanced with distinct design.

Welcoming you with a flamboyant first impression, a brick-red stair runner is the backdrop for a monochrome tiled entrance.

Open doors to the double reception room, set for grand social gatherings or leisurely family life. Honey-toned floorboards sweep through the space, drawing warmth to towering pastel grey walls. Dual-aspect glass brings a rejuvenating light to the space, illuminating a stone surround fireplace to the front, and leading to a picturesque courtyard to the rear.

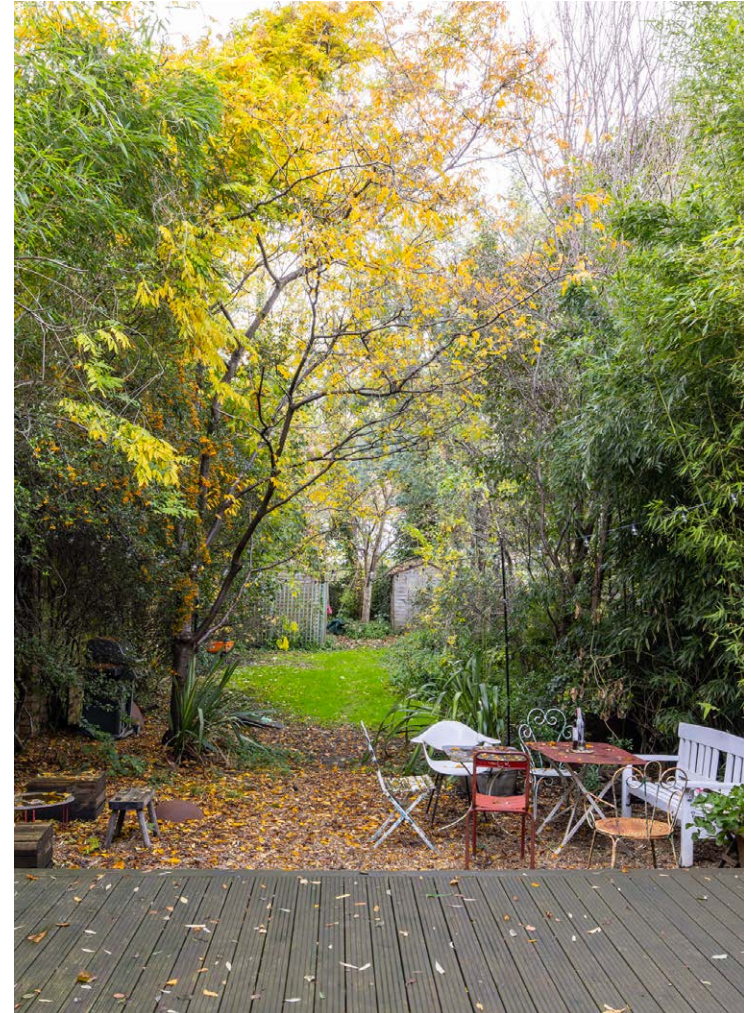
Enveloped in a lively pink hue, a spacious open-plan kitchen and dining room serves as an intimate social hub. Subtly rustic in tone, an array of textures – from exposed brick to wooden countertops – are illuminated through expansive slanted skylights above. Creating a sophisticated bridge between spaces, a breakfast bar is topped in sleek black stone. From here, two sets of double glass doors open to an enchanting private garden. An idyllic spot for al-fresco dining, a decked patio encompasses the immediate space, while towering trees enclose the lawn beyond.















Ascending to the first floor, a generous principal bedroom suite is fitted in calming colours. A large bay window makes for an uplifting space to unwind, while two indulgent dressing rooms make mornings easy. Wrapped in dark grey, a spacious en suite bathroom features a large bathtub and separate shower.

Enriched with vibrant shades of blue, two further bedroom sits on this floor, served by a sophisticated shower room. Sat at the top of the home, a teal-toned staircase guides the way to an additional guest bedroom with an en suite shower room.







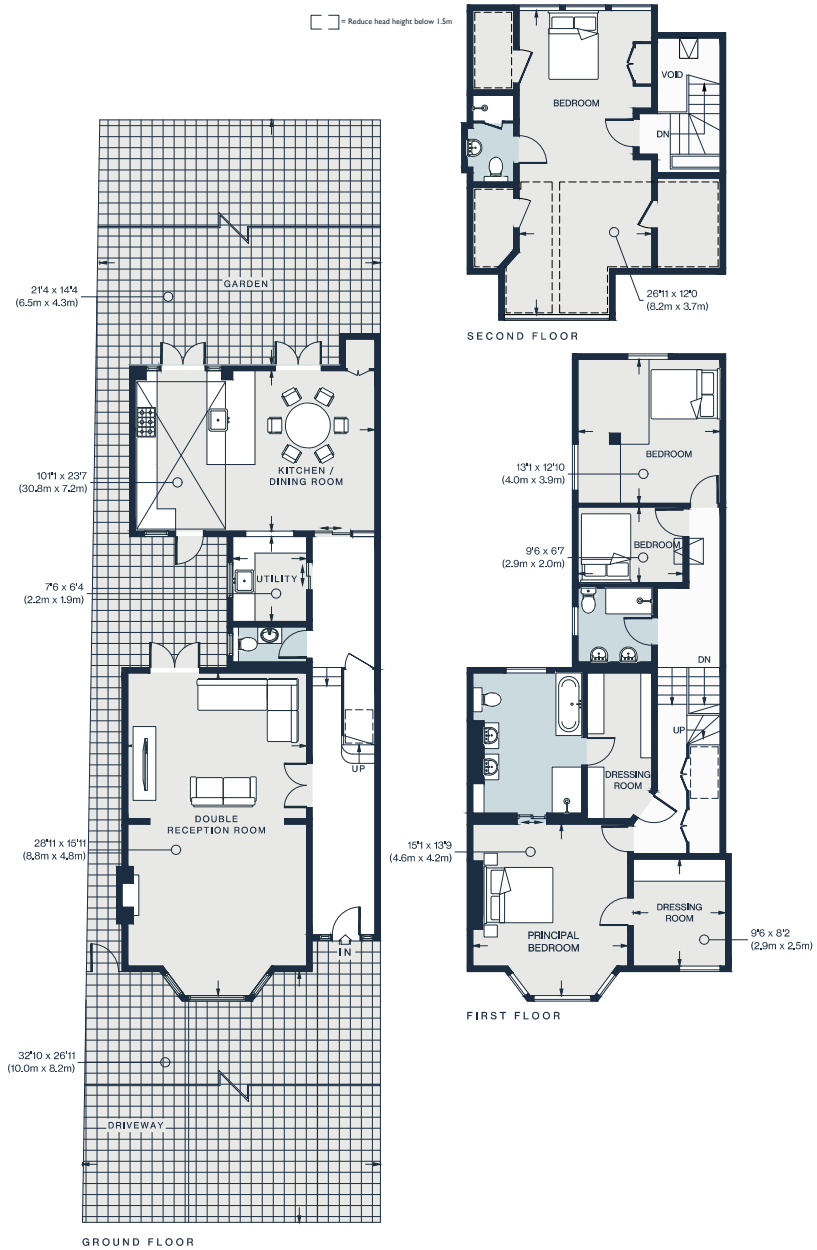






BANHAM

ring



Approx. Gross Internal Area = 2562 sq ft / 238.0 sq m

Floor plans are for illustrative purposes only and not to scale. Compliant with RICS code of measuring practice.

## Property Details

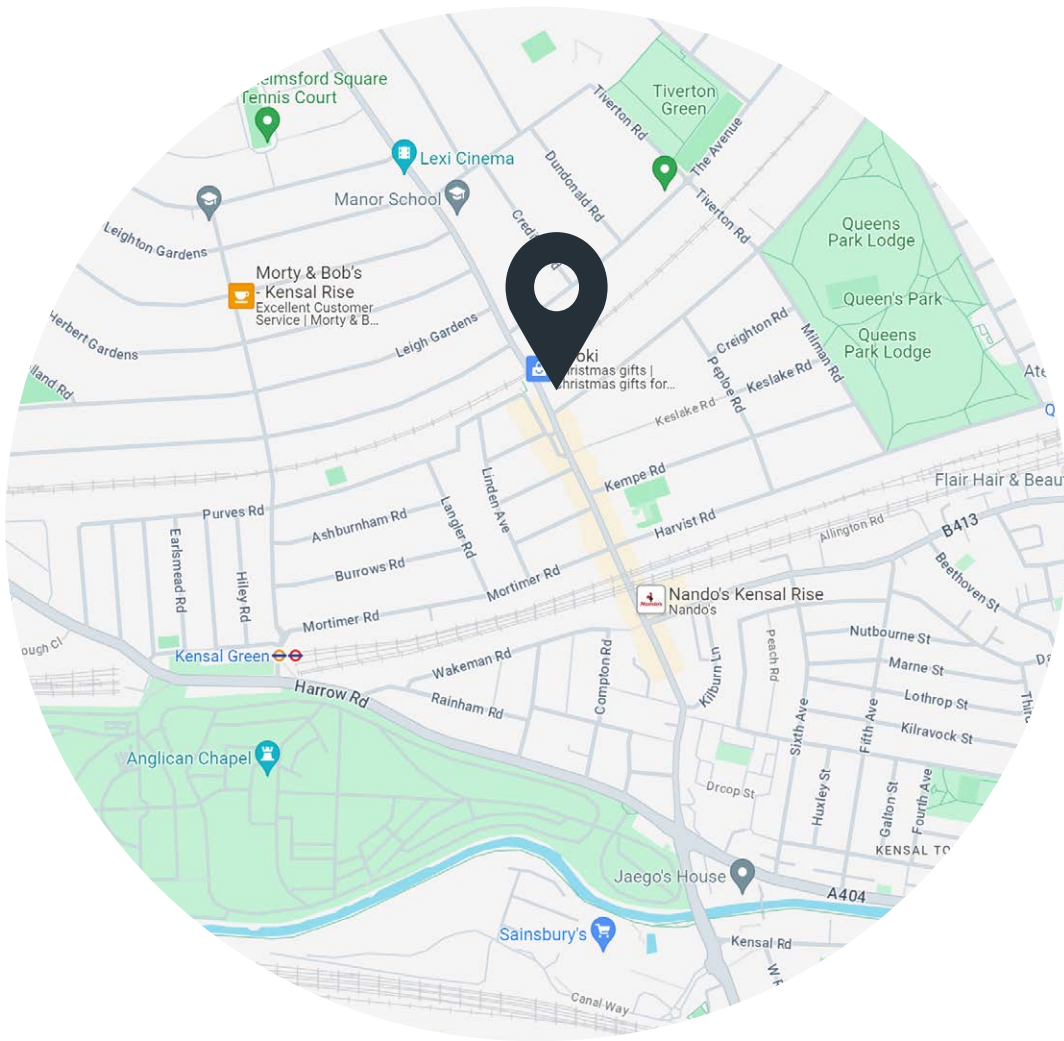
- Open-plan kitchen and dining room
- Double reception room
- Principal bedroom suite with two dressing rooms
- Guest bedroom suite
- Two further bedrooms
- Shower room
- Utility room
- Private garden
- Courtyard

Approx. 2,562 sq ft / 238 sq m

EPC - D

Council tax - F

Freehold



## Location

A lively hub for families and creatives alike, this peaceful residential spot in Queen's Park offers a reprieve from bustling city life. Just seconds from your door, grab a caffeine kick from Ciuollo's before heading to the park for a leisurely stroll. On more active afternoons, take your rackets along to the tennis courts. Stop by Michiko Sushino for authentic sushi with an animated ambiance. Spend an evening at The Lexi, a coveted independent cinema.

- Kensal Rise – Overground (2 mins)
- Queen's Park – 16 mins (Overground, Bakerloo)



Specialising in London  
and Ibiza's design-led homes

Let's talk  
020 7221 7817  
sales@domusnova.com  
domusnova.com

The particulars above are a guide, not an offer or contract. Descriptions, photographs and plans are not statements or representations of fact. Measurements are approximate and not to scale. Prospective purchasers must verify the accuracy of the information within the particulars. Domus Nova does not give any representations or warranties, nor represent the Seller legally. Domus Nova has no liability, for any costs, losses or expenses incurred by the Seller or a prospective buyer relating to the sales and buying transaction.

Our Sales Disclaimer, trading names and privacy policy on how your data is processed and used is found in full on our website in our [Privacy Statement](#).

© Domus Nova 2023. All rights reserved.