

# DOMUS NOVA

Chevening Road

Queens Park NW6

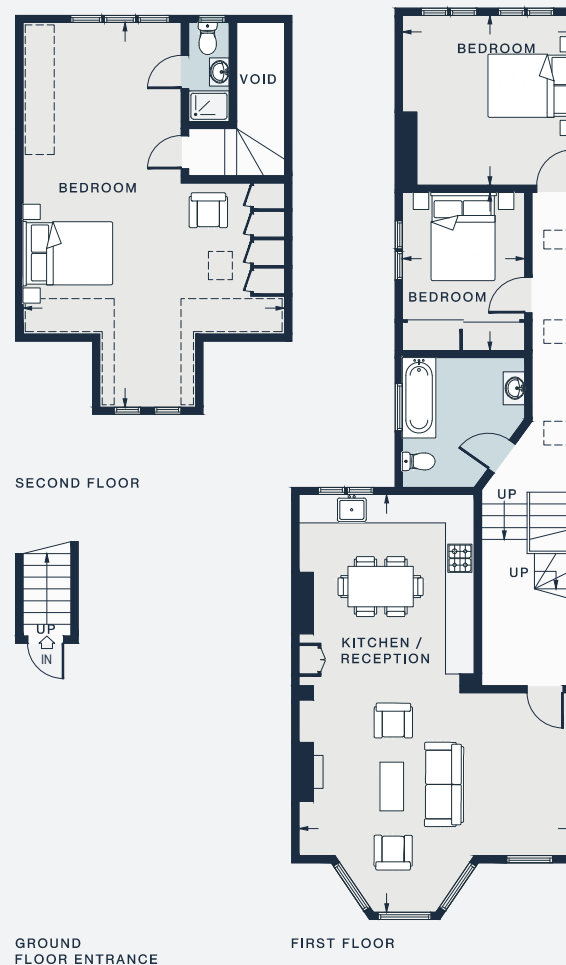
APPROXIMATE GROSS INTERNAL AREA

1,327 sq ft / 123.3 sq m

020 7727 1717

domusnova.com

LONDON | IBIZA



#### KITCHEN / RECEPTION

29'0 x 19'0 (8.8m x 5.7m)

#### BEDROOM

11'1 x 8'6 (3.3m x 2.5m)

#### BEDROOM

12'0 x 11'9 (3.6m x 3.5m)

#### BEDROOM

26'8 x 17'10 (8.1m x 5.4m)

Approx. Gross Internal Area = 1327 sq ft / 123.3 sq m

Floor plans are for illustrative purposes only and not to scale. Compliant with RICS code of measuring practice. Furniture layouts are indicative only. This property may be furnished, part-furnished or unfurnished. Please refer to your agent for details.