

DOMUS NOVA



Chesterton Road, W10
£1,650,000



Perched atop a classic townhouse, characterful interiors by House Nine Design unravel throughout this thoughtfully styled duplex.

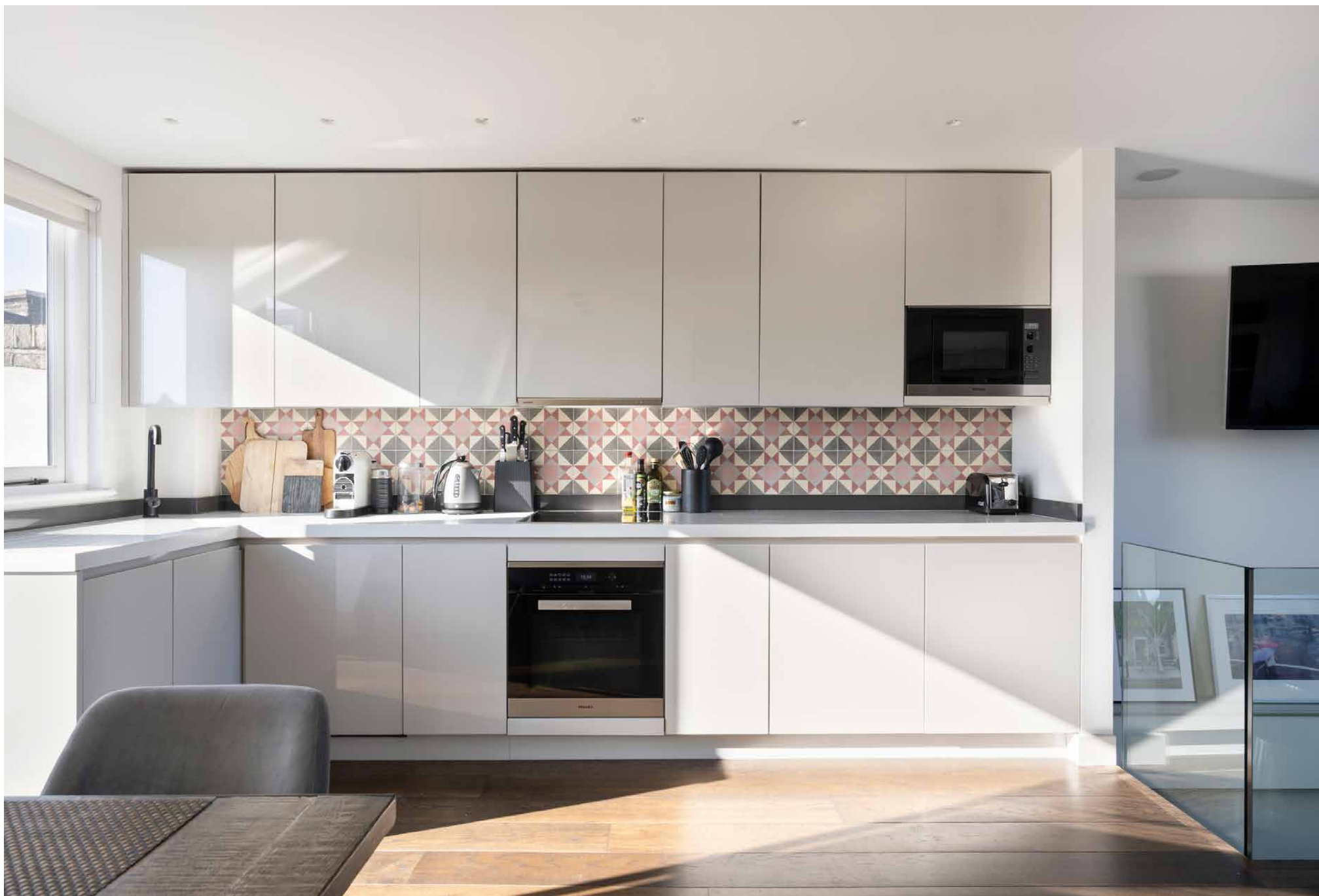
Found crowning the home, a welcoming social sanctuary is warm and autumnal in tone. Dark wooden floorboards elongate an open-plan layout, bathed in natural light from opposing panes of glass. Here, a Mediterranean palette – all olive, terracotta, and oatmeal tones – lends warmth to distinct yet fluid zones for lounging, dining, and cooking. The kitchen's taupe lacquer cupboards pair with a Moroccan tile splashback and Miele appliances, while the bespoke banquette is a stylish spot to savour meals. When warmer weather calls, a decked terrace offers space to dine alfresco. To the other side, sliding glass doors seamlessly extend the lounge out to an additional terrace. When work calls, a dedicated office space sits off the first-floor landing.







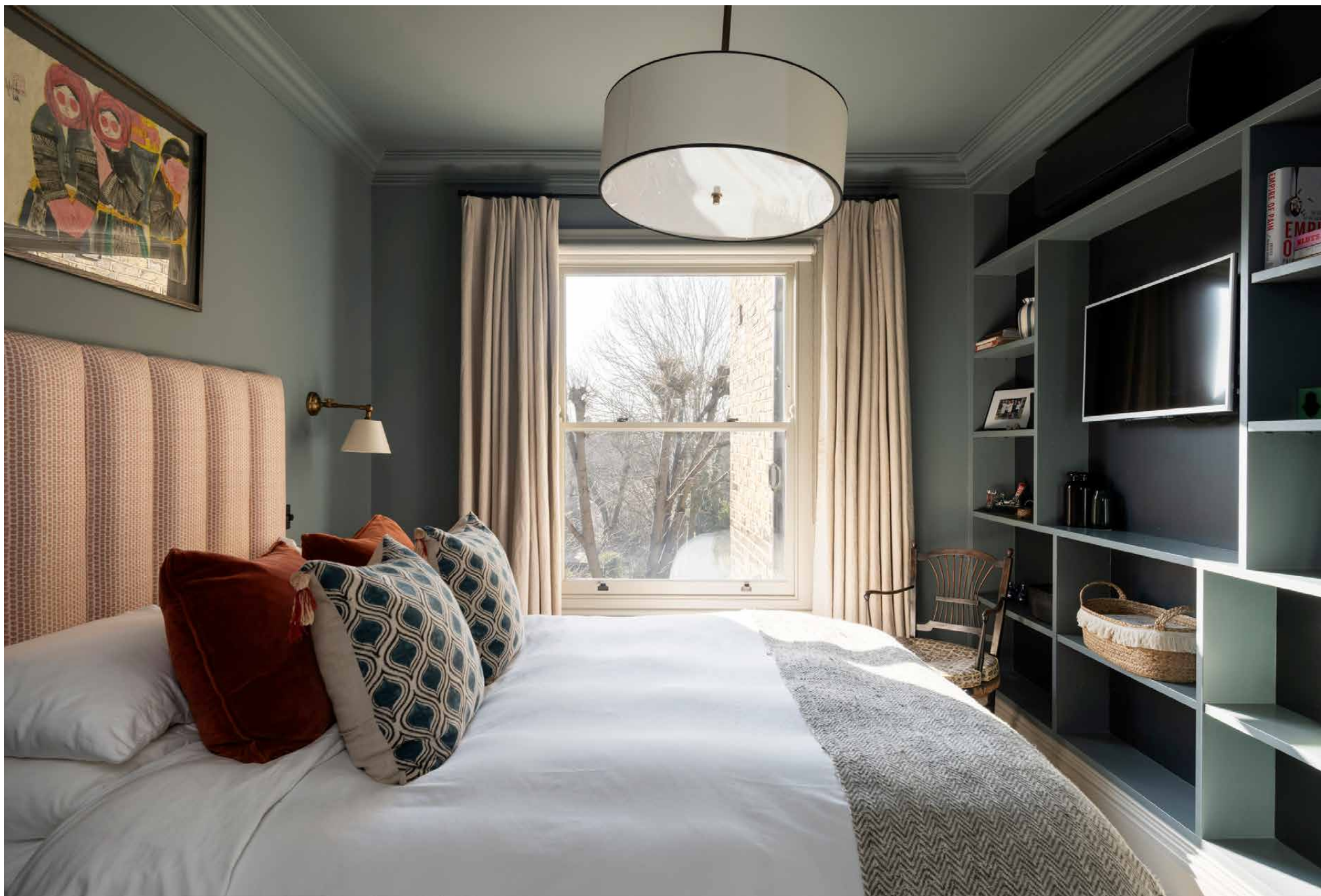
“ Found crowning the home, a welcoming social sanctuary is warm and autumnal in tone.



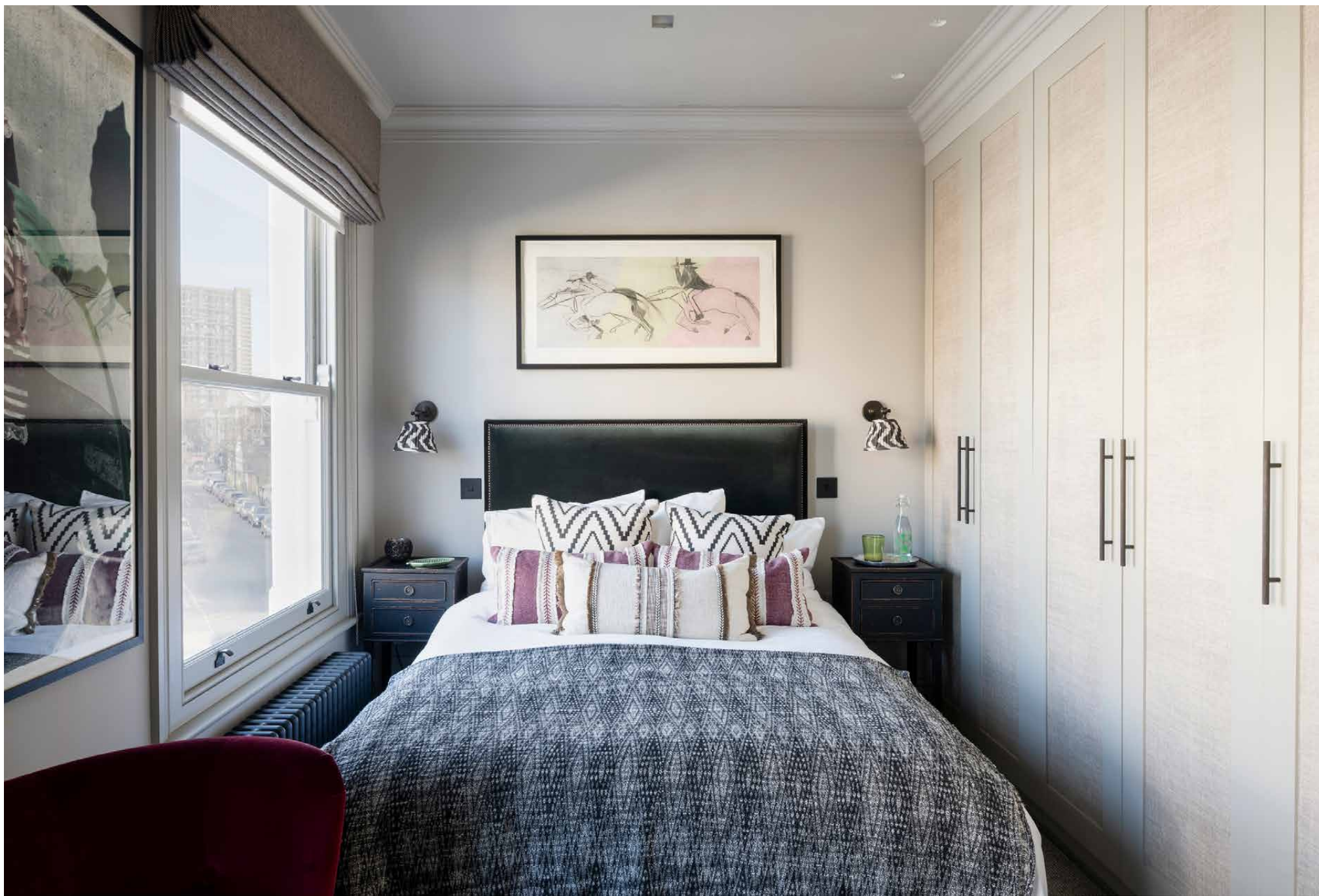


Downstairs, the sleeping quarters are soothing and sophisticated. Dusky blue hues lend an opulence to the principal bedroom, where bespoke integrated storage frames the entrance to the en suite. Here, find heated marble floors, custom mirrors and a walk-in rainfall shower. The guest bedroom sits opposite, channeling a refined feel with sleek storage and twin sash windows. A family bathroom serves this room, elevated with light olive walls, tumbled marble checkerboard tiles and a spacious bathtub.







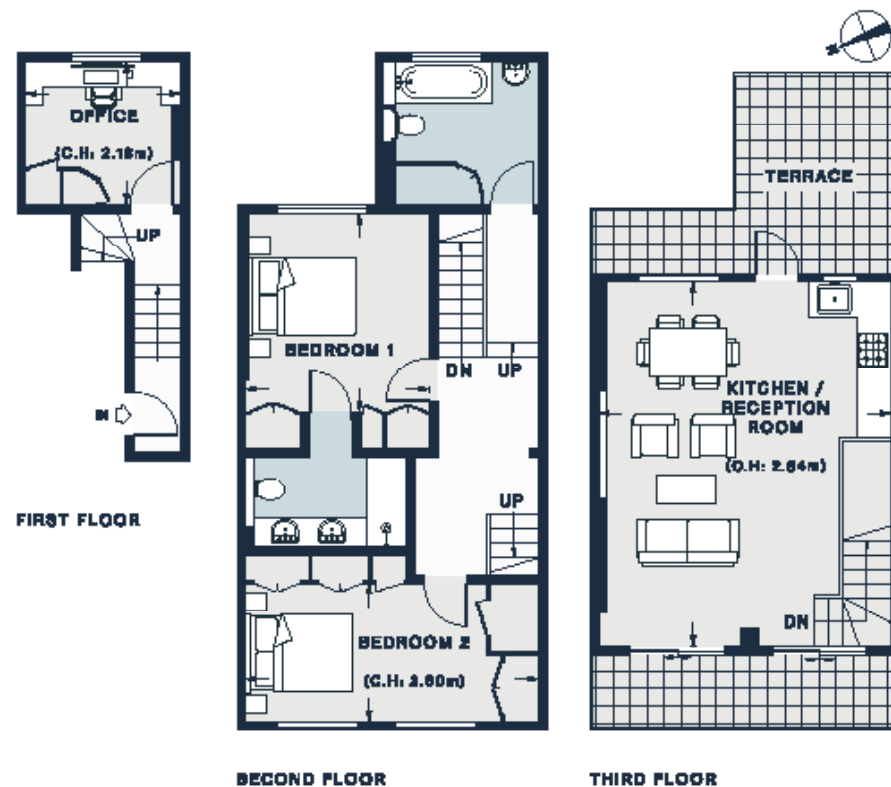








Resident
parking
only
Mon-Fri
8.30am - 6.30pm
Saturday
8.30am - 1.30pm



RECEPTION ROOM / KITCHEN
 20'10" x 17'1" (6.3m x 5.2m)

OFFICE
 8'11" x 6'5" (2.7m x 2.0m)

BEDROOM 1
 11'5" x 12'11" (3.4m x 3.9m)

BEDROOM 2
 13'4" x 7'10" (4.0m x 2.4m)

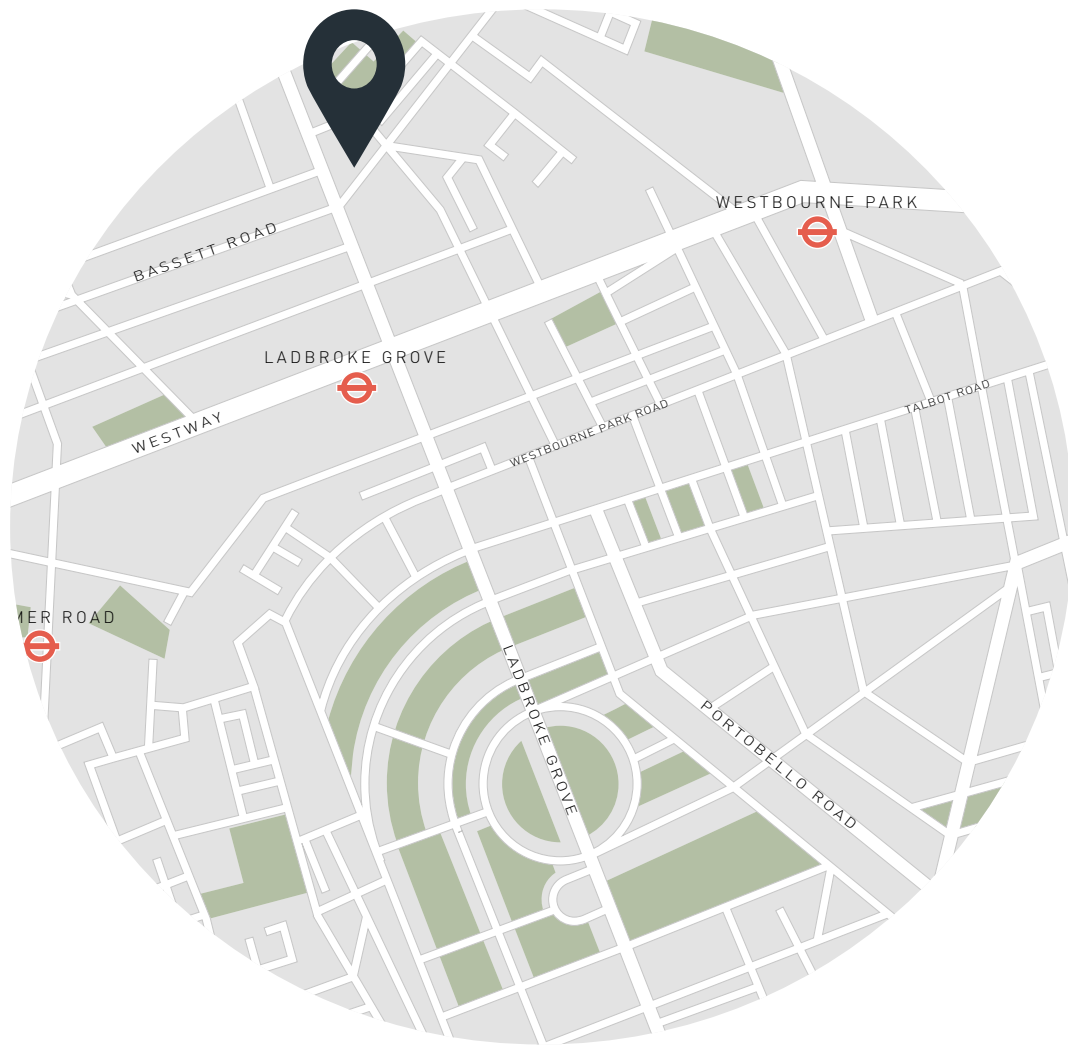
Approx. Gross Internal Area = 1,031 sq ft / 95.8 sq m

Floor plans are for illustrative purposes only and not to scale. Compliant with RICS code of measuring practice.

Property Details

Interiors by House Nine Design
 Open-plan kitchen and reception room
 Principal bedroom suite
 Guest bedroom with bespoke storage
 Family bathroom
 Two terraces
 Office
 Royal Borough of Kensington & Chelsea

Approx. 1,031 sq ft / 95.8 sq m
 EPC=C
 Tenure: Leasehold
 Lease Length: circa 208 years
 Council Tax Band: F
 Service charge: £5,779



Location

A stone's throw from the antiques dealers and boutiques of Golborne Road, Chesterton Road is perfectly placed in one of London's most vibrant residential areas. Kick off your morning with breakfast at Lowry & Baker or Lisboa, then browse antiques. Stroll down to Portobello Road for an afternoon of vintage treasure hunting; stop by the food market on weekends. For dining, head to Ukai or Strakers, then The Pelican for a post-dinner tippie.

Ladbroke Grove - 5 mins (Circle, Hammersmith & City)

Specialising in London
and Ibiza's design-led homes

Let's talk
020 7221 7817
sales@domusnova.com
domusnova.com

The particulars above are a guide, not an offer or contract. Descriptions, photographs and plans are not statements or representations of fact. Measurements are approximate and not to scale. Prospective purchasers must verify the accuracy of the information within the particulars. Domus Nova does not give any representations or warranties; nor represent the Seller legally. Domus Nova has no liability, for any costs, losses or expenses incurred by the Seller or a prospective buyer relating to the sales and buying transaction.

Our Sales Disclaimer, trading names and privacy policy on how your data is processed and used is found in full on our website in our [Privacy Statement](#).

© Domus Nova 2025. All rights reserved.