

DOMUS NOVA



Chepstow Villas W11
£12,000 p/w - Long Let



Palatial proportions and expertly-considered interiors. Chepstow Villas has the design-forward sensibility of a contemporary family home, set in the beating heart of Notting Hill.

Space designed for modern family dwelling, this seven-bedroom home stands tall on one of Notting Hill's most sought-after streets. The immaculately-finished front garden, with its cast-iron railings and manicured topiary, are a precursor to the refined elegance that characterises the interiors.



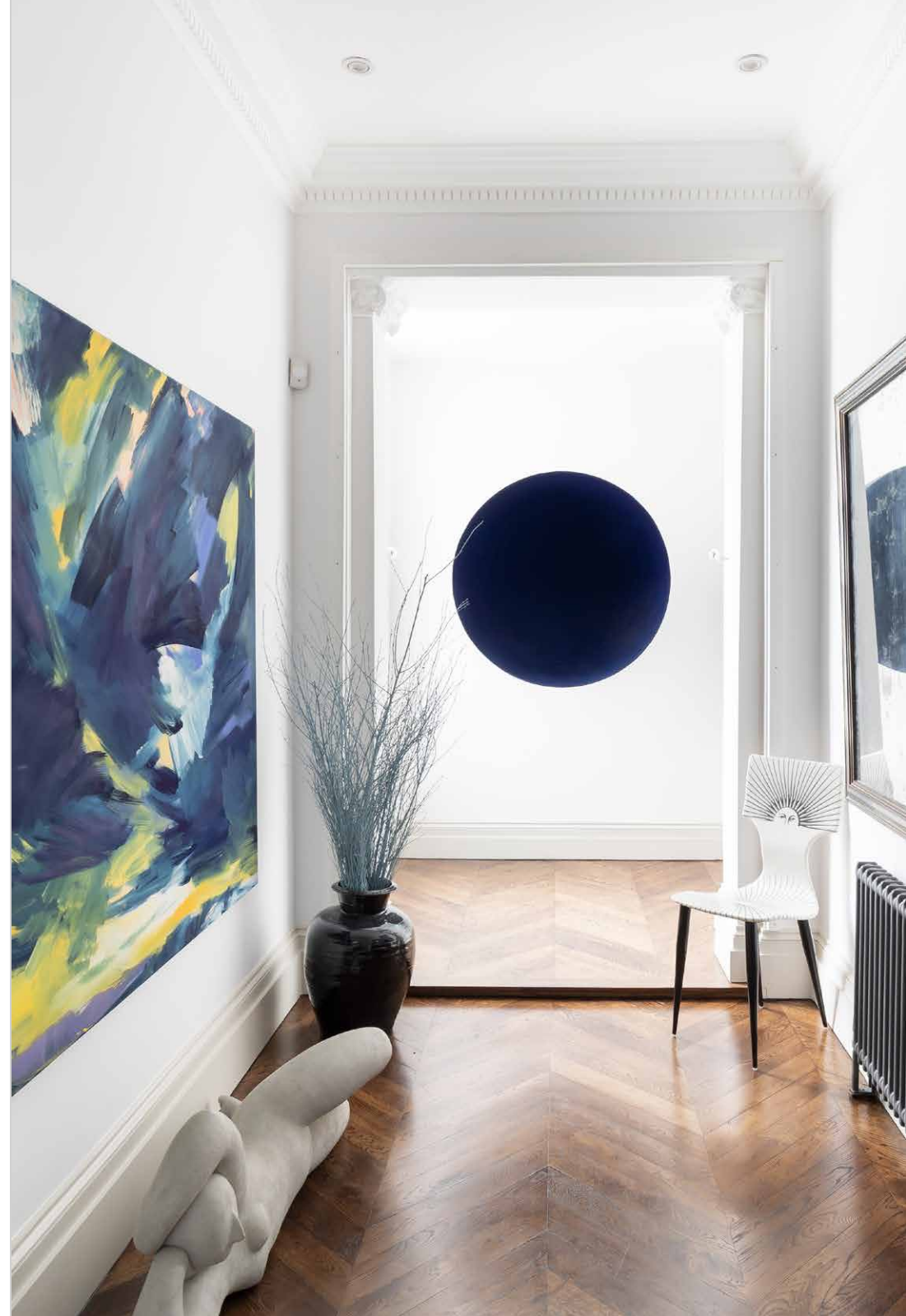


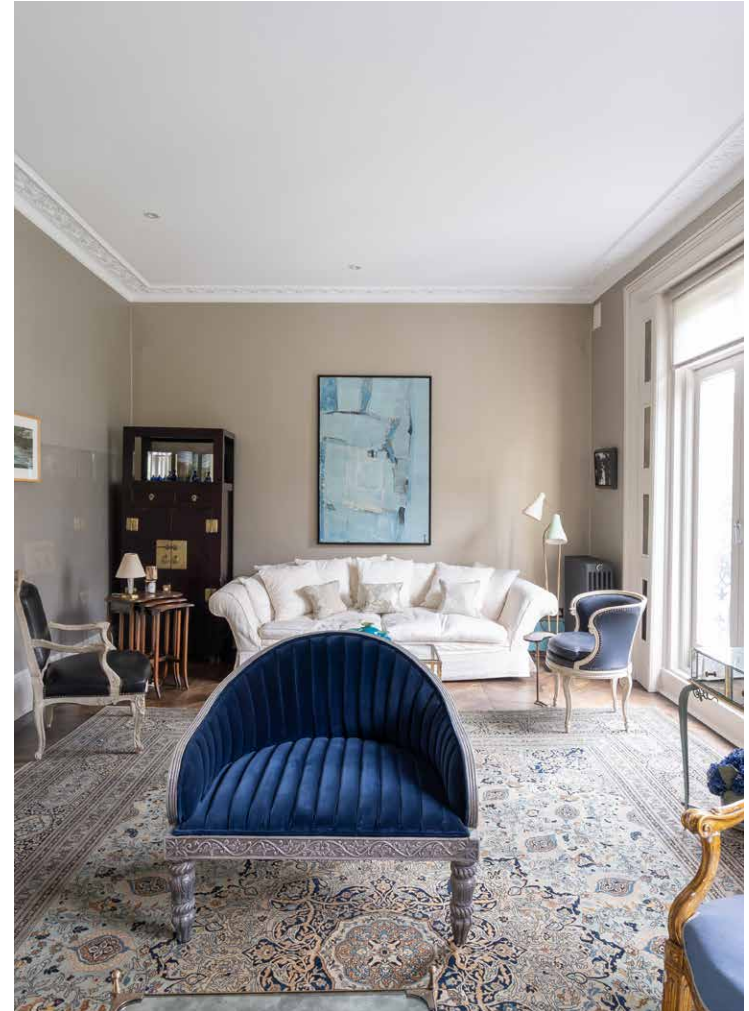


Reams of light cascade down the entrance hallway. On one side, double doors open to a dining room. Decorative cornicing and chevron oak floors set the scene for formal dinner parties here. On the other, head into an open-plan kitchen and reception room.

A clean-line marble island sits at the heart of the newly-refurbished culinary space. Appliances are as ergonomic as they are stylish, from the Gaggenau oven to the Quooker taps. Sage green banquette seating is a relaxed spot for quick lunches and leisurely breakfasts.

A display column works to delineate the kitchen from the reception room. A palette of natural tones and textures span the bespoke wood shelving and a dark green L-shaped sofa – it's a soothing and sophisticated space. An industrial stamp on Chepstow Villas' period footprint, Crittall doors channel sunlight into the kitchen and living areas.

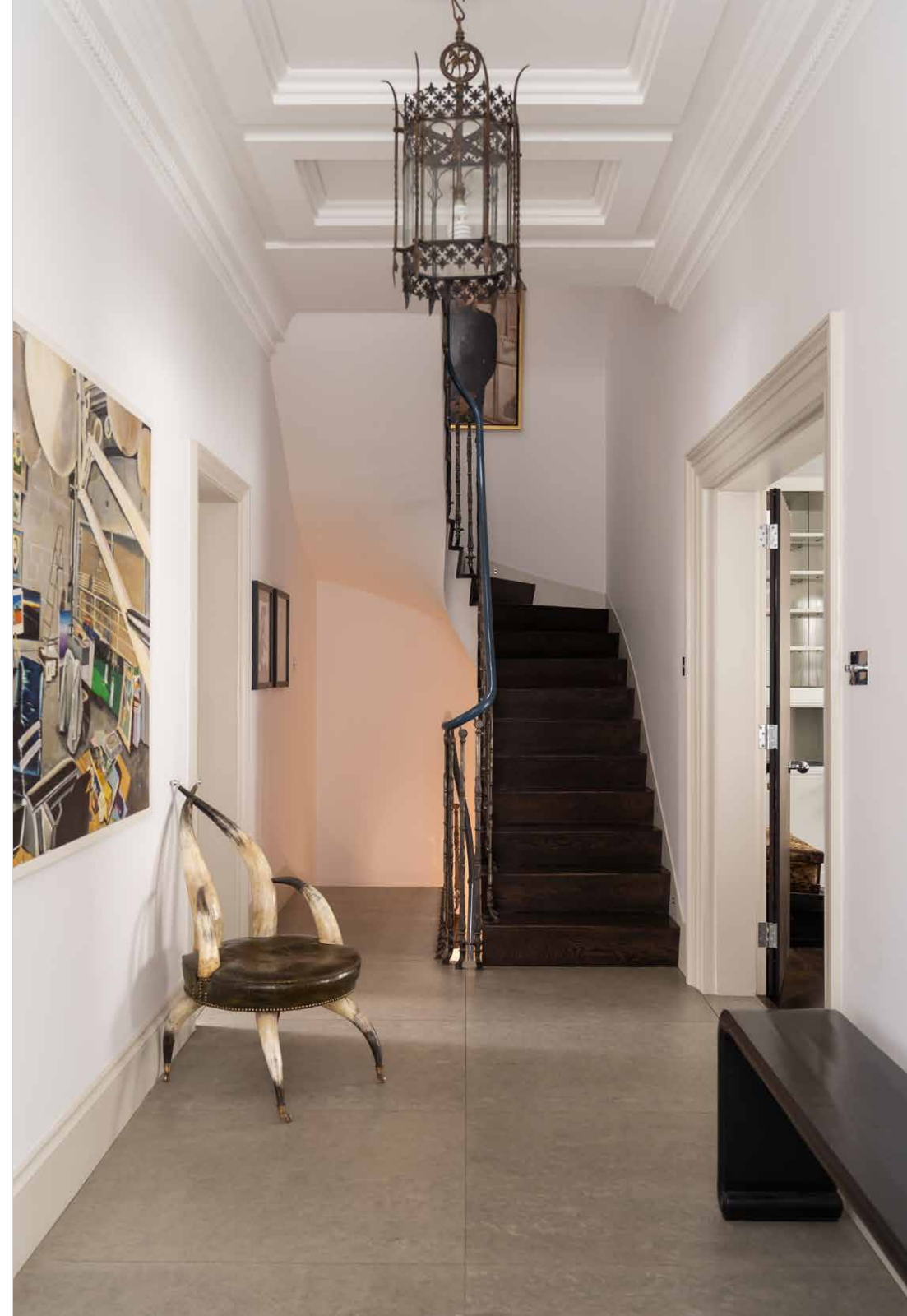


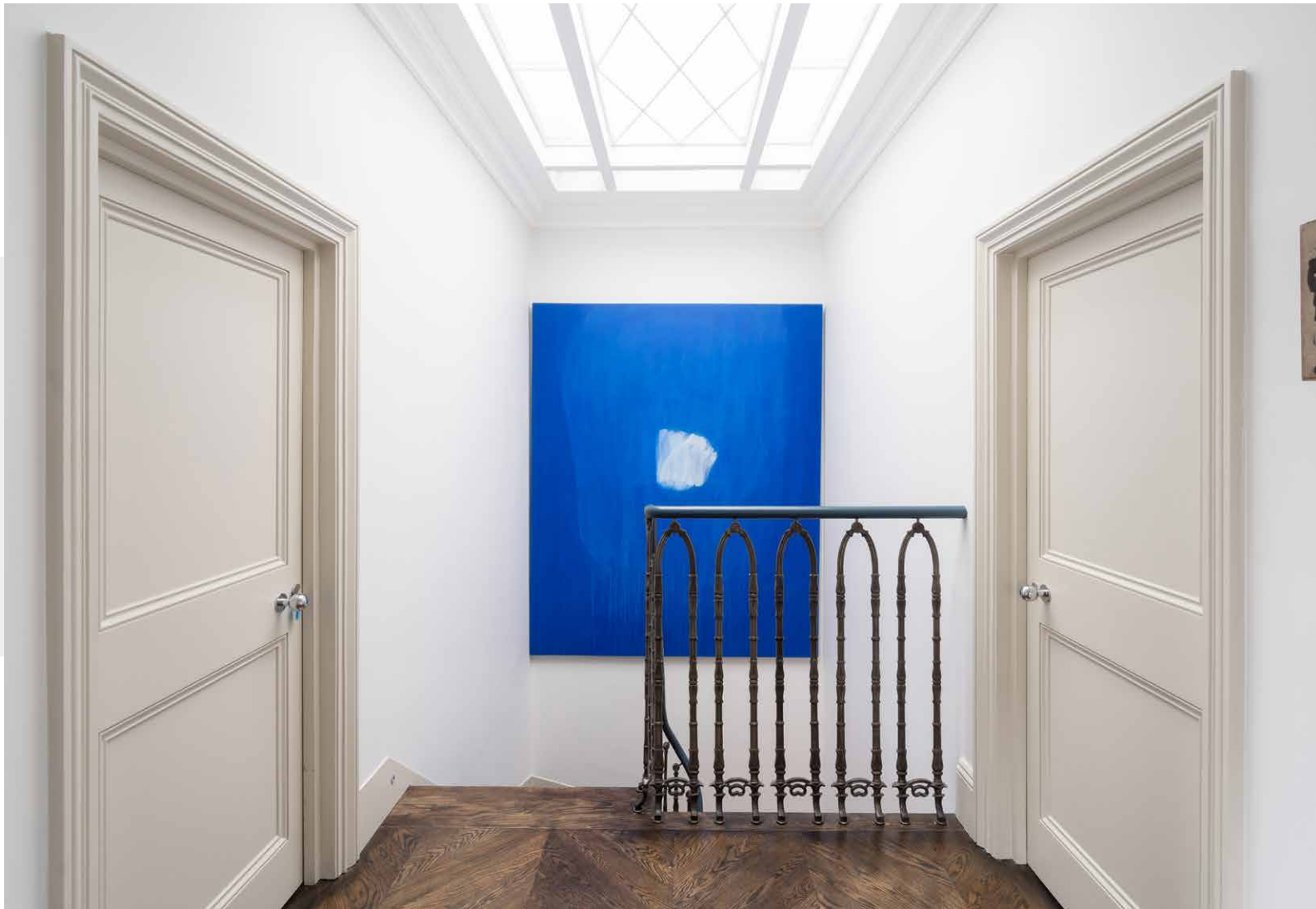




The first floor is a host to striking contemporary artwork and sculptures, as well as a formal reception room and master bedroom suite. Double French windows illuminate the spacious living room, which lead to a balcony overlooking the peaceful street below. Next door, there's a refined elegance to the carpeted floors and pale tones of the principal bedroom. Through a dedicated dressing space with floor-to-ceiling wardrobes, the ensuite bathroom vaunts dual-aspect glazing and an opulent marble bath.

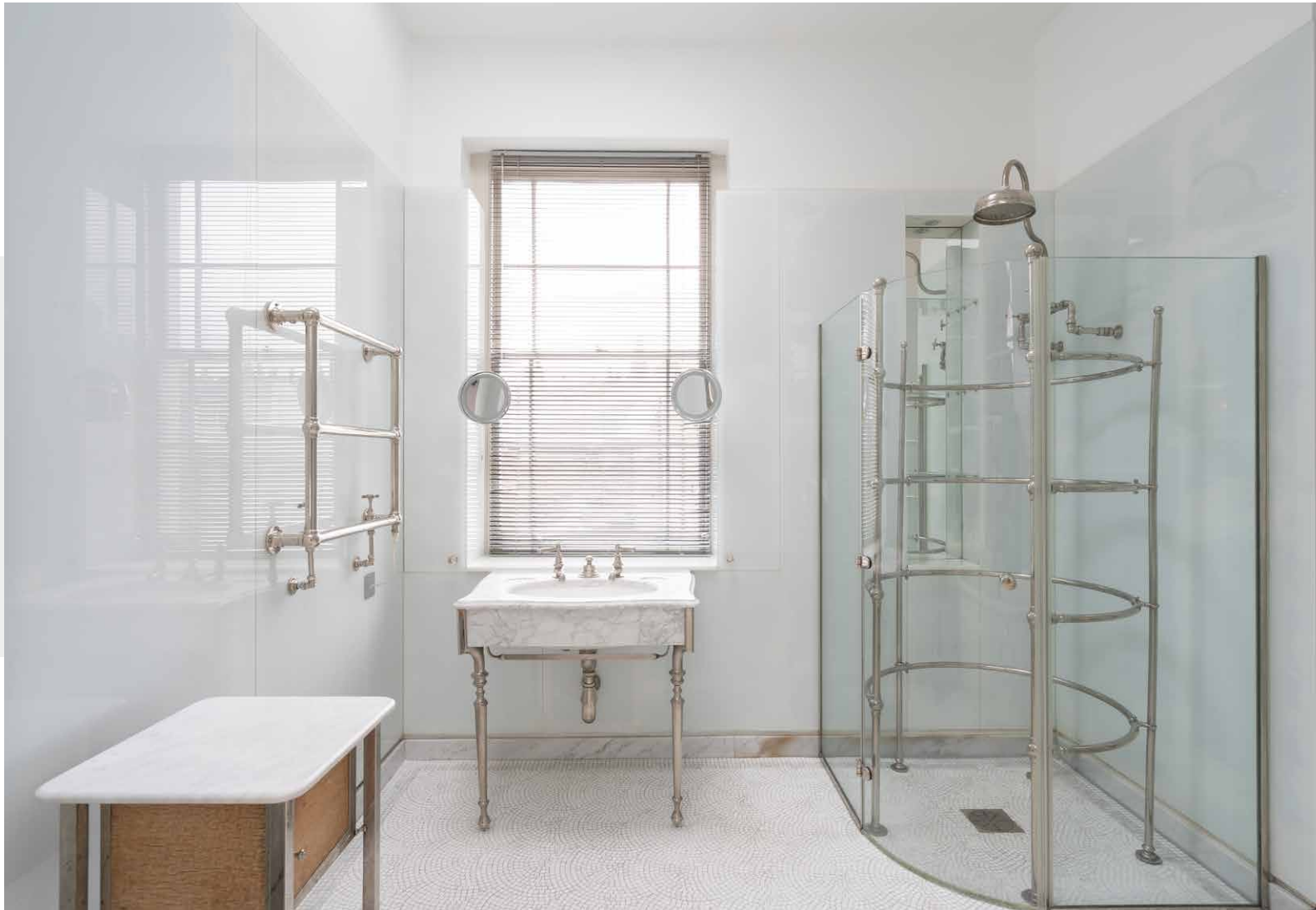
On the second floor, carefully-considered wallpapers and furniture are showcased across four inviting bedrooms. Two of the rooms are currently used as study spaces; one of these also enjoys floor-to-ceiling wardrobes and a light-flooded ensuite bathroom. Head down to the lower-ground floor, where a second kitchen and two further bedrooms make for cosy staff or guest quarters. A snug games room, wine cellar and separate utility room complete this home of outstanding proportion, space and style.

















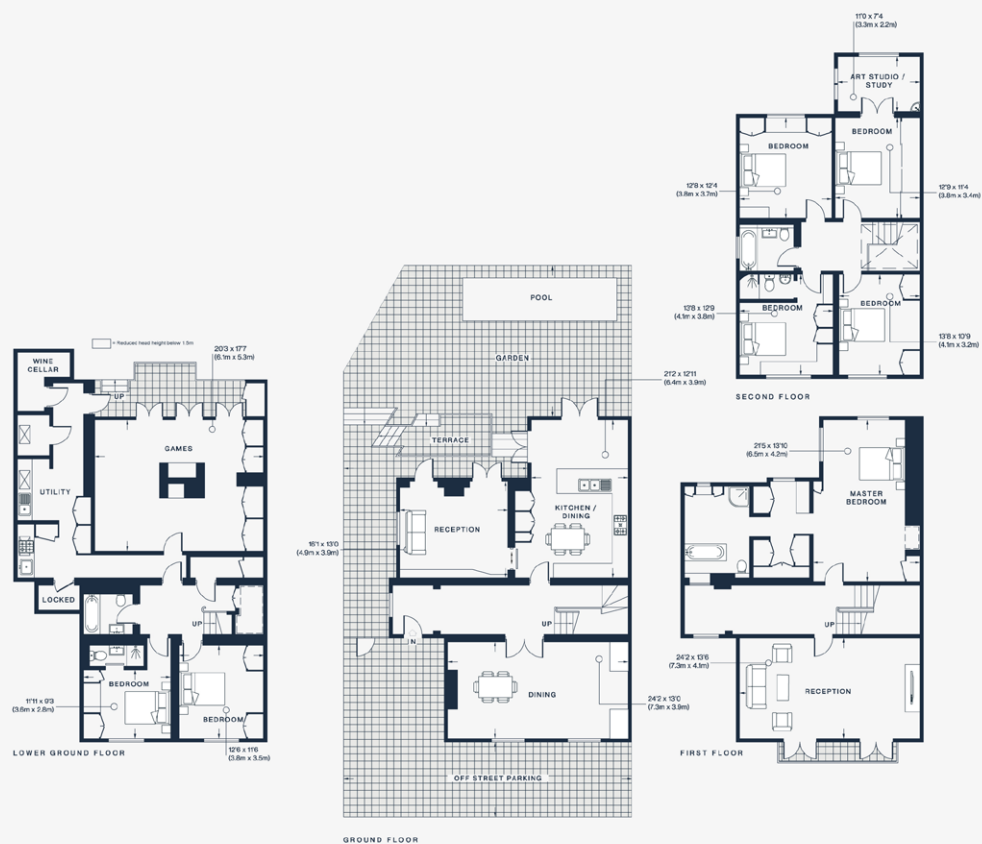
The garden is a masterstroke in landscape design, where high brick walls and soaring greenery ensure a remarkable sense of privacy. Alfresco lunches beneath the awning on the terrace.

Press pause on a sun lounger next to blooming hydrangea bushes. The heated pool and outdoor speakers are imagined for all-year-round entertaining.







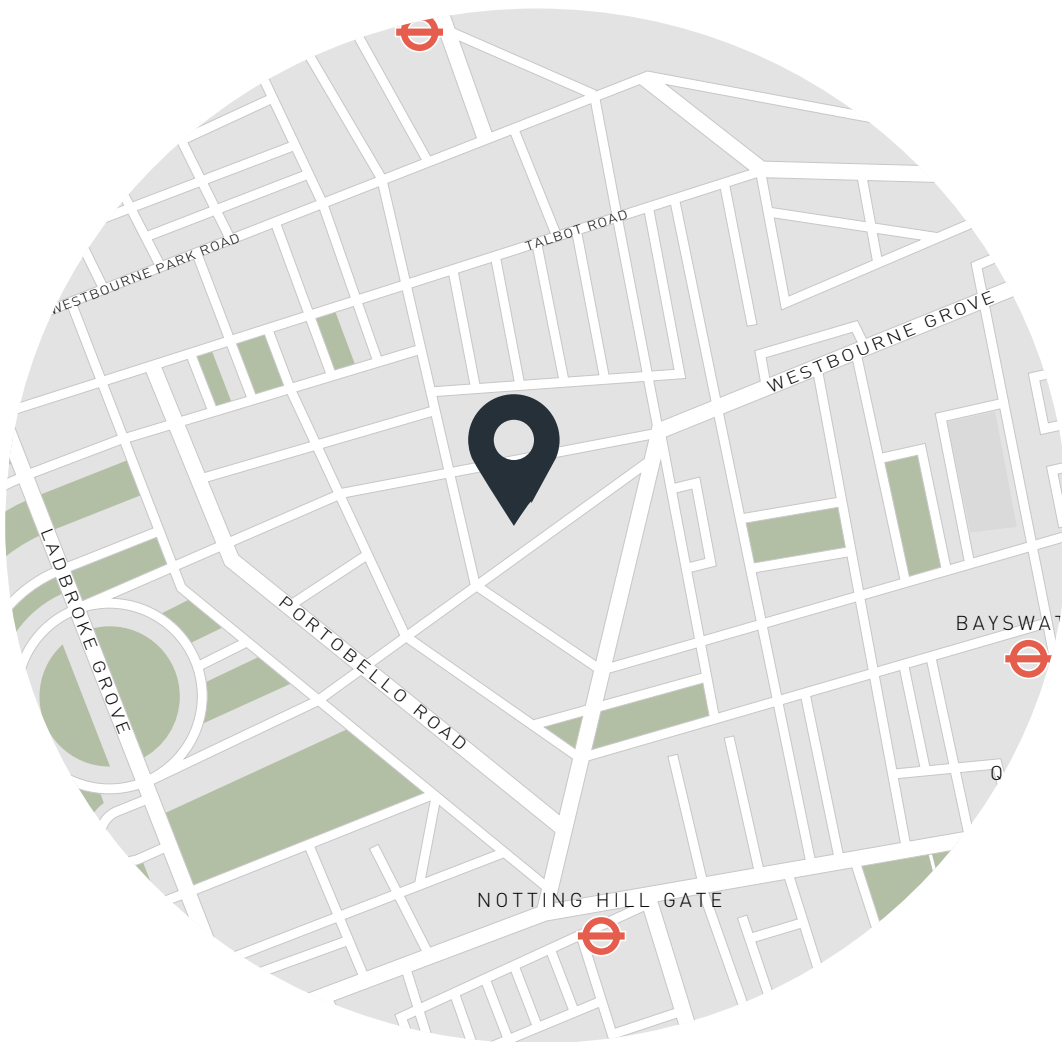


Property Details

Open-plan kitchen and reception room
 Formal dining room
 Second reception room
 Master bedroom suite
 Six further bedrooms
 Four further bathrooms
 Landscaped garden with pool
 Off-street parking
 Royal Borough of Kensington & Chelsea

Approx 4,352 sq ft / 404.3 sq m
 EPC = D
 Council Tax Band - H
 Deposit payable - £72,000

Floor plans are for illustrative purposes only and not to scale. Compliant with RICS code of measuring practice. Furniture layouts are indicative only. This property may be furnished, part-furnished or unfurnished. Please refer to your agent for details.



Location

Chepstow Villas has enviable proximity to Notting Hill's best thoroughfares, whilst enjoying a serene privacy courtesy of its residential location. Westbourne Grove is a stone's throw away, with coveted boutiques such as Paolita, Reformation and Sézane interspersed between refreshment stops – Ottolenghi, Granger & Co. and 202 to name but a few. Daylesford Organic Farm Shop is conveniently located for grocery essentials. Whilst there's no shortage of outdoors space in the home, the expansive lawns of Hyde Park and Holland Park are equidistant from your front door. Notting Hill Gate is just five minutes away, for easy access into central London and beyond.

Nearest tube:

Notting Hill Gate - (5 mins)

Specialising in London
and Ibiza's design-led homes

Let's talk
020 7727 1717
lettings@domusnova.com
domusnova.com

The property particulars are a guide not statements. Descriptions, photographs, and plans are for guidance and should be checked by the prospective tenant. The Property is offered "subject to contract and references". No warranties, representations, or Tenancy is given by Domus Nova. Expenses incurred by a prospective tenant will not be reimbursed if the Landlord withdraws prior to the Tenancy Agreement being signed, dated and exchanged and cleared funds received. Furniture and other items shown in a property at viewing may belong to a current tenant. The prospective tenant should verify in writing which fixtures and fittings forms part of the Tenancy. Our full lettings disclaimer together with trading names and our [Privacy Policy](#) is shown on our website