

DOMUS NOVA



Chepstow Crescent W11 – £4,375,000

In partnership with **BARNES**
INTERNATIONAL REALTY



In the heart of residential Notting Hill, Chepstow Crescent quietly unfolds with handsome heritage townhouses and leafy trees. A soaring pale-blue façade catches the eye against its surrounding stock-brick neighbours – a precursor to the inspiring craftsmanship that lies within. Thanks to the vision of design studio Barlow & Barlow, this four-bedroom maisonette celebrates the art of interior creativity. Taking cues from the homeowners' Californian heritage, there's a serene atmosphere with comfort and practicality prioritised – while classic architectural features are carefully balanced with playful colours and layered patterns.

With off-street parking included, the home is set for streamlined city living.



From the entrance hallway, which features custom cupboards finished in Farrow & Ball's Hague Blue', the home opens into a bright reception room.

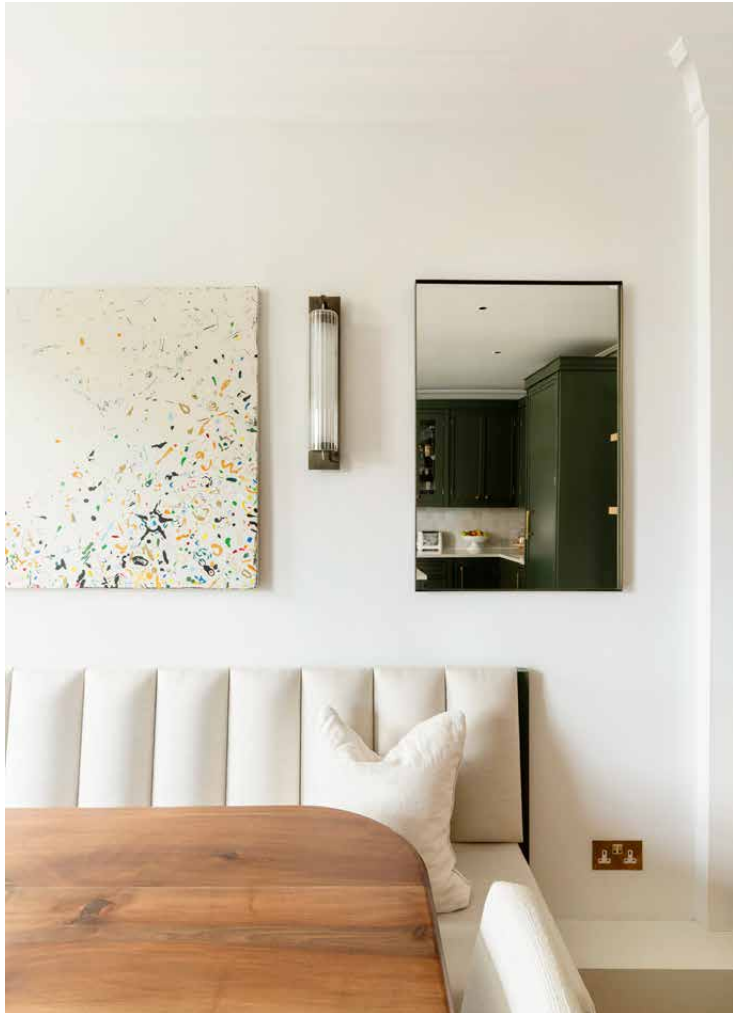
Sunlight filters in through floor-to-ceiling sash windows, overlooking the peaceful street below. Pale walls and wood floors set a refined tone for custom additions: a sea-blue built-in shelving wall – with a central alcove ideal for art display – and a bold Pooky central light. The feature fireplace was designed in-house by Barlow & Barlow, with a striking marble surround and interior tiling.

Across the hallway, a bespoke kitchen and dining room by Herringbone Kitchens is uplifting in feel and replete with considered design features. A marble-topped island centres the culinary space, backdropped by a large range oven, Mosaic Factory zellige tile splashback and shaker-style cabinets finished in Sherwin Williams' 'Pewter Green'. Natural light pours in through a sash window, illuminating the dining area with its built-in banquette seating.









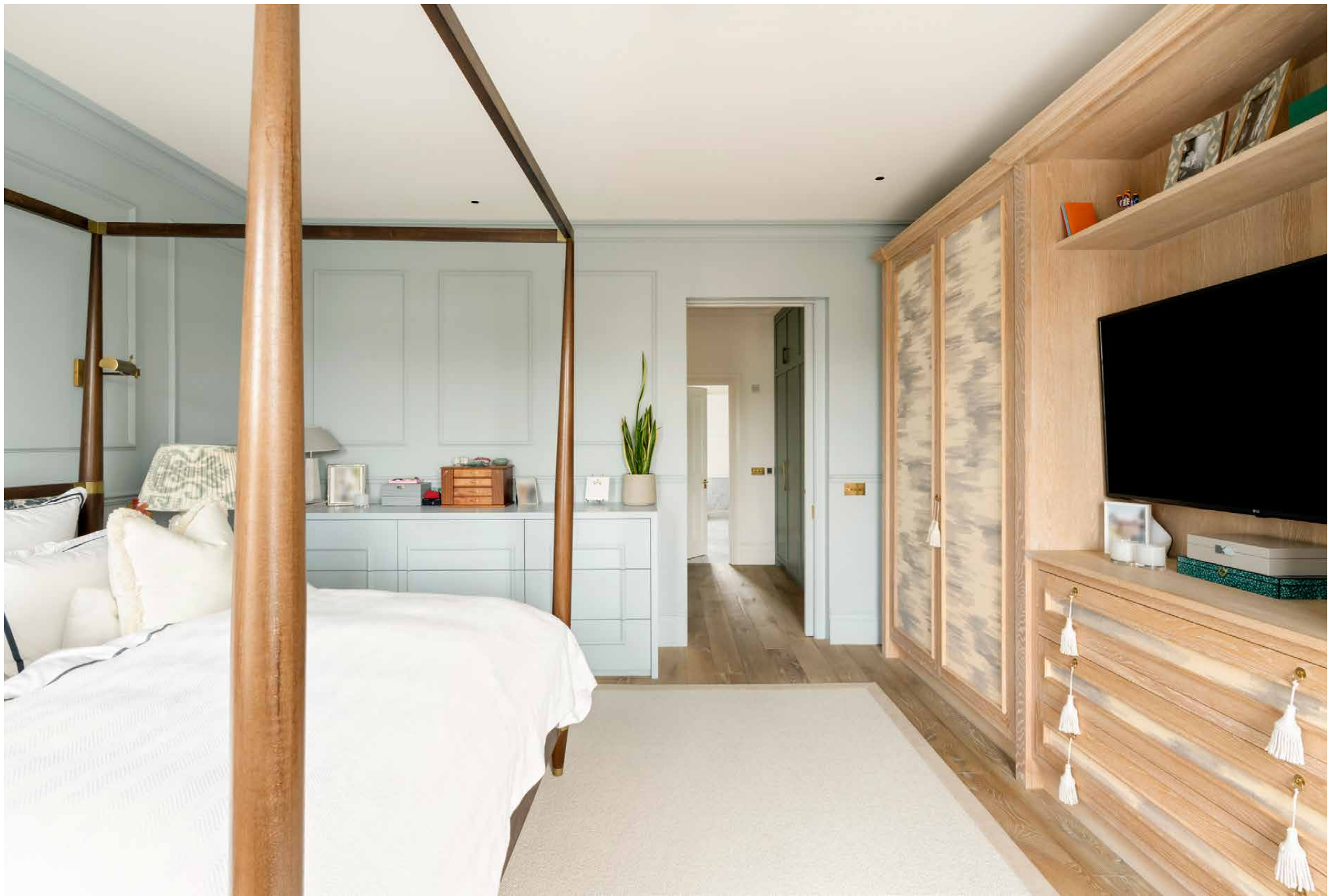




At the heart of the maisonette, a central staircase connects all three floors, with discreet joinery on every landing providing abundant storage. Located on the third level, the principal bedroom is tranquil and refined. Kravet's 'Awash' print unifies the draped curtains and wardrobes, while Farrow & Ball's 'Light Blue' panelling and skirting provide a sophisticated backdrop.

Also on the third level, one of the guest bedrooms enjoys access to a private balcony. On the fourth floor, the remaining guest bedroom is finished with integrated wardrobes. Two bathrooms serve these spaces – one with a Victoria + Albert 'Toulouse' bathtub, the other features blue and pink Claybrook tiling. Completing the top level is a quiet study.

Crowning the property is a spacious roof terrace. Sleek wood floors lead to a bespoke outdoor kitchen and dining area, with far-reaching views across West London's skyline.

















Property Details

Interior design by Barlow & Barlow
Open-plan kitchen and dining room
Reception room
Principal bedroom
Two guest bedrooms
Two bathrooms
Additional bedroom/study
Private roof terrace and balcony
One parking space
Royal Borough of Kensington

Approx. 1,751 sq ft / 162.7 sq m

EPC=D

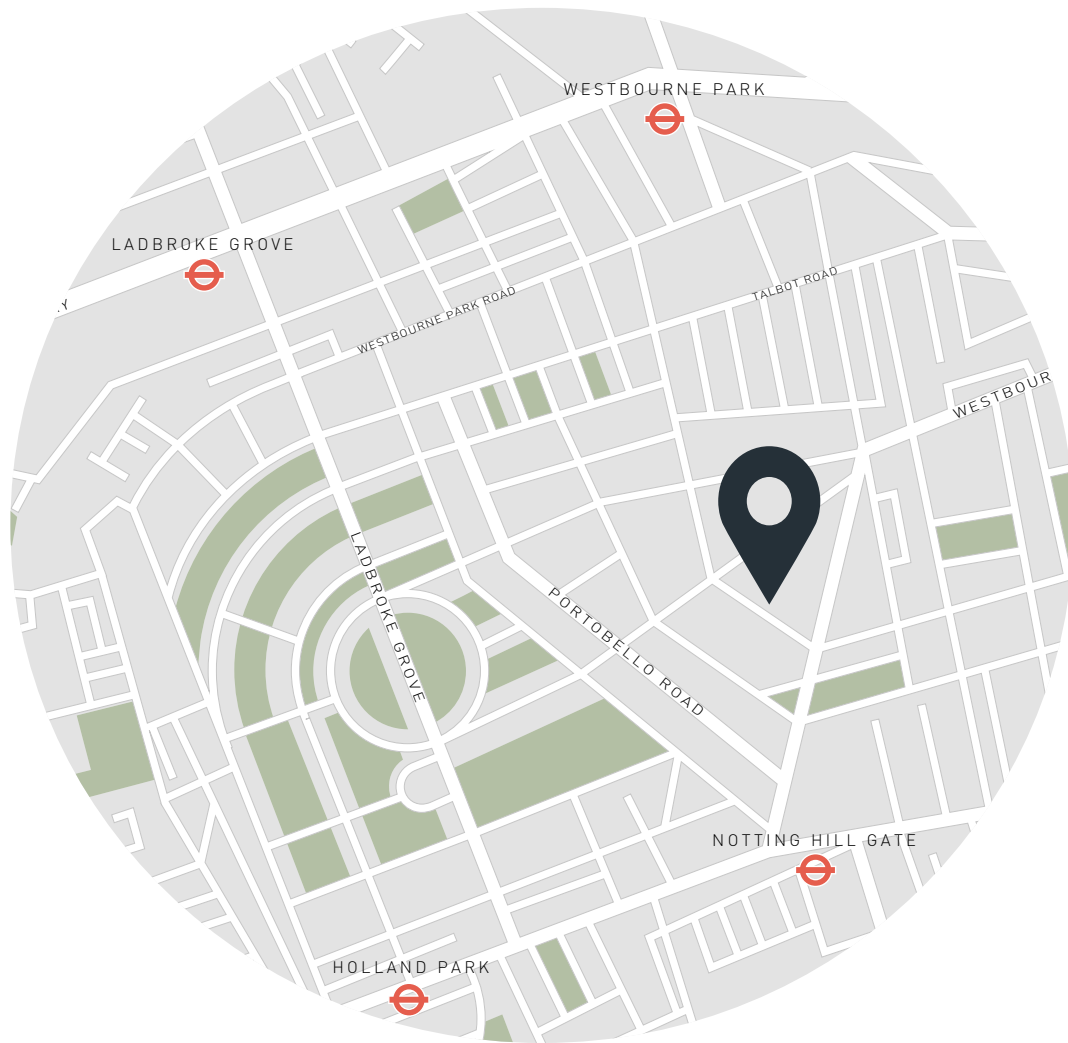
Tenure: Share of Freehold plus Freehold

Lease Length: circa 993 years

Annual Service Charge: Approx. TBC

Council Tax Band: G

Approx. Gross Internal Area = 1,751 sq ft / 162.7 sq m



Location

Just moments from Portobello Road, Chepstow Crescent puts you at one with Notting Hill's most vibrant spots. Spend leisurely mornings exploring the vintage markets, then stop for brunch at nearby Farm Girl. Browse the high-end boutiques of Westbourne Grove, picking up fresh provisions from Daylesford Organic en route home. For peaceful afternoons in nature, the leafy lawns of Holland Park are just a short walk away. Come evening, an array of fine dining options are only minutes away. Head to Core by Clare Smyth for three-Michelin-starred dining, or visit ambient restaurant Gold for dinner and drinks – before a film at the iconic Electric Cinema.

Notting Hill Gate - 7 mins (Central, Circle, District)



Who ——— we are

Forward-thinkers in property, design and culture, we're an estate agency that hits refresh.

Domus Nova was born out of a desire to do things differently; to break the traditional agency model and focus on design-led homes in London and Ibiza, all while delivering the highest levels of personal service.

Our story starts in the nineties when we founded Notting Hill's first boutique agency – and we continue to open the doors to the most remarkable spaces, revealing them to our like-minded community.

We want to help you live better – and believe considered design can do that. That's why we remain committed to building on our legacy, in collaboration with BARNES International, an established agency with a market-leading presence in 22 countries.

Uniting our local insight and curated portfolio with BARNES International's expansive reach, we can facilitate the best opportunities in not only London and Ibiza, but also across Europe, the US and further afield – whether that's a château in the South of France, a penthouse in New York, or a chalet in the Swiss Alps.



DOMUS NOVA

Specialising in London
and Ibiza's design-led homes

Let's talk

020 7221 7817

sales@domusnova.com

The particulars above are a guide, not an offer or contract. Descriptions, photographs and plans are not statements or representations of fact. Measurements are approximate and not to scale. Prospective purchasers must verify the accuracy of the information within the particulars. Domus Nova does not give any representations or warranties; nor represent the Seller legally. Domus Nova has no liability, for any costs, losses or expenses incurred by the Seller or a prospective buyer relating to the sales and buying transaction.

Our Sales Disclaimer, trading names and privacy policy on how your data is processed and used is found in full on our website in our [Privacy Statement](#).

© 2026 Domus Nova in partnership with BARNES International. All rights reserved.

In partnership with
BARNES
INTERNATIONAL REALTY