

DOMUS NOVA



Chelsea Park Gardens SW3 – £10,000 p/w (LL)

In partnership with **BARNES**
INTERNATIONAL REALTY



A calming backdrop in the heart of Chelsea, this five-bedroom Arts and Crafts-style house for rent enjoys a cottage-like feel, and access to an exclusive communal garden.

In walking distance to the King's Road, this impressive home offers the best of both worlds – a peaceful setting, with plentiful amenities on the doorstep. Arranged over four floors, striking contemporary design elevates a family focused layout, with flawless interiors throughout.

On the ground floor, a double reception room encompasses a formal living and dining space. Every detail has been chosen with comfort in mind without compromising on style. Mock Tudor ceilings and a marble fireplace add warmth, contrasting with the light, natural-coloured walls.

Crittall-style doors lead into a well-equipped kitchen. Dark burnished cabinetry and stone surfaces stretch to the ceiling, emphasising the generous proportions of the room. There's a breakfast table for informal meals, meaning those who cook can socialise with friends and family. From this floor, step out to a secluded patio that opens onto an exclusive communal garden accessed by only nine other houses.

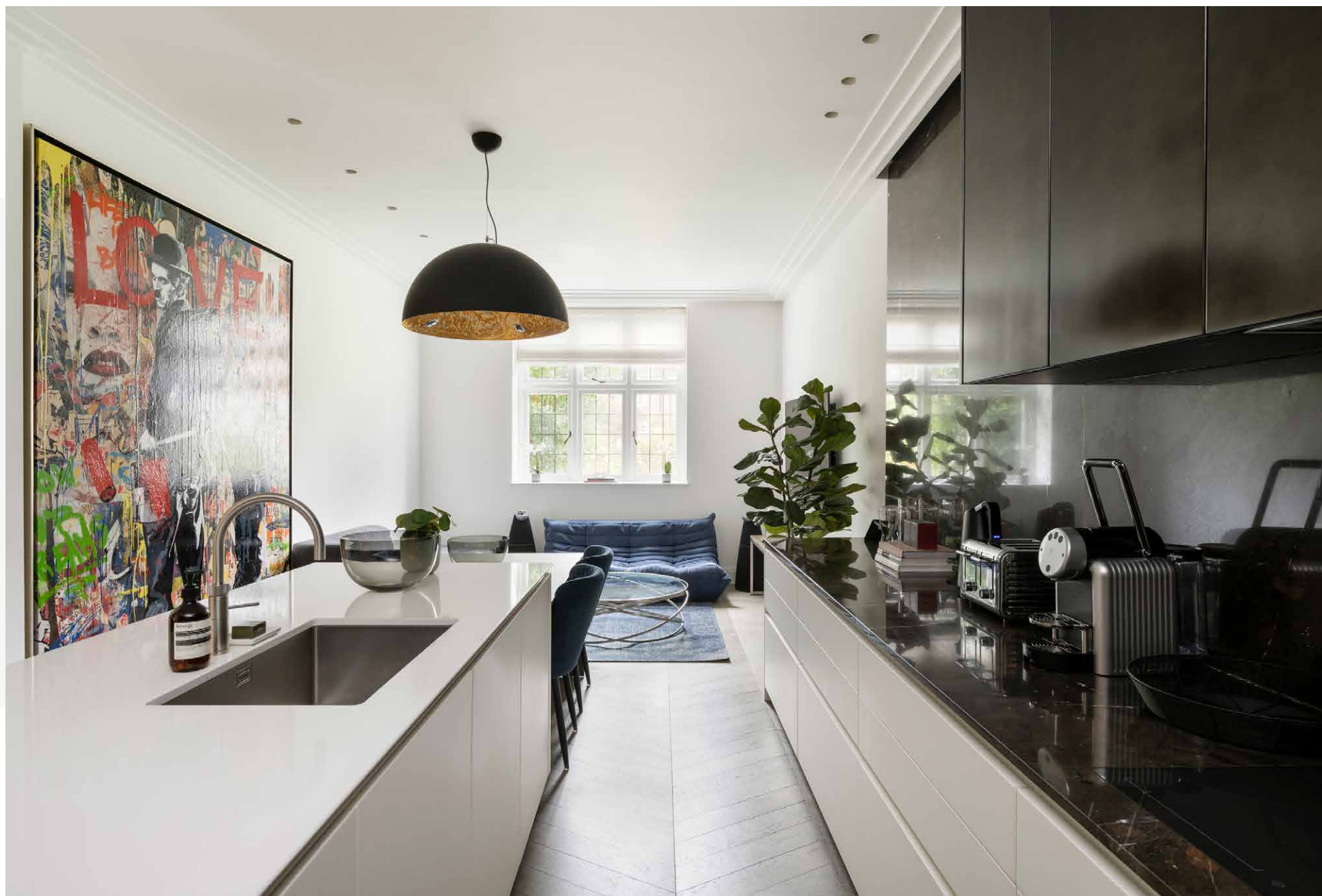
A sculptural staircase leads down to an expansive media room with four-metre-high ceilings and a large-screen TV. Elsewhere, this floor features a utility room, a cloakroom and an en suite bedroom with access to a patio – an ideal option for a nanny or older children.















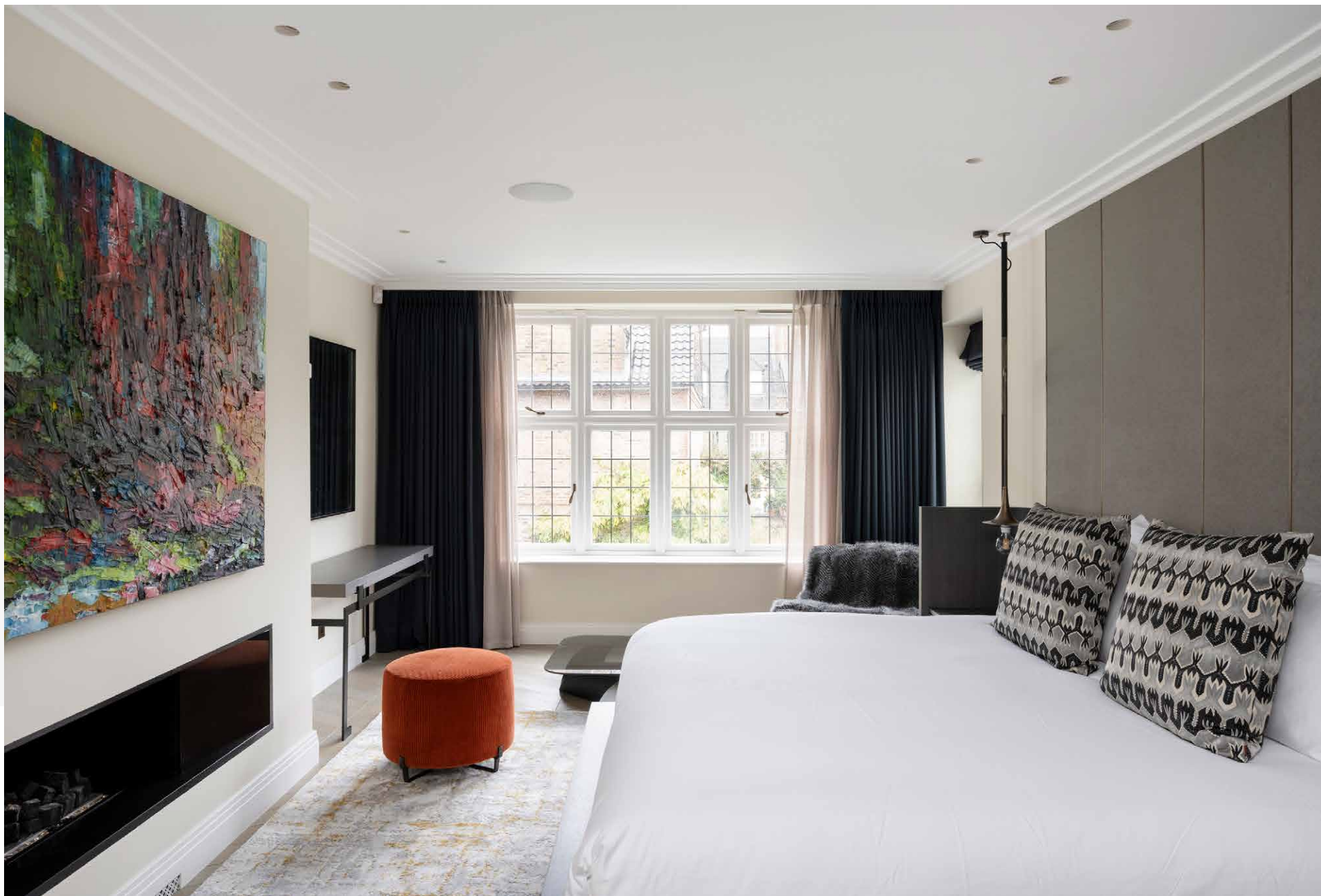
A double reception room encompasses a formal living and dining space. Every detail has been chosen with comfort in mind without compromising on style.

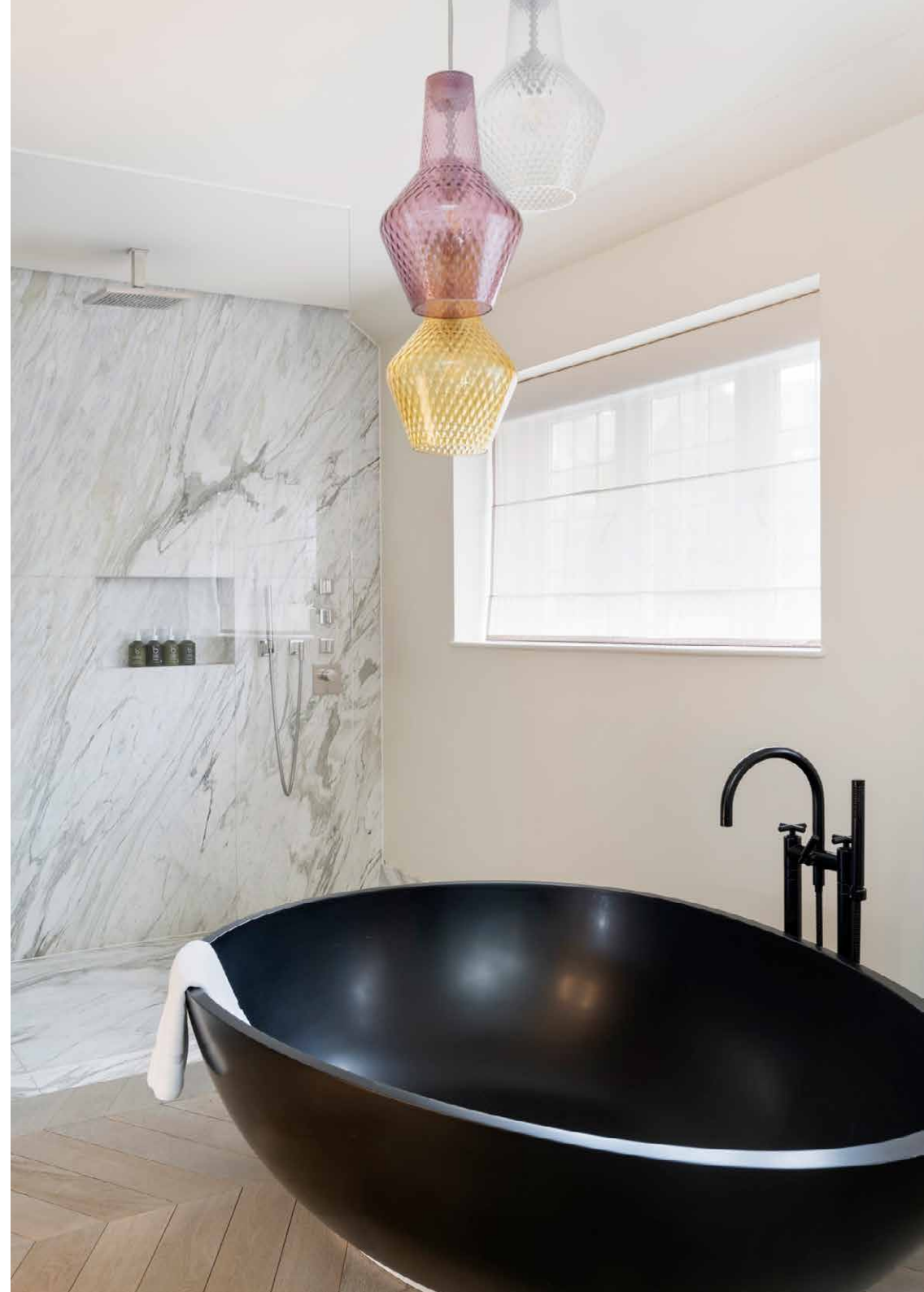
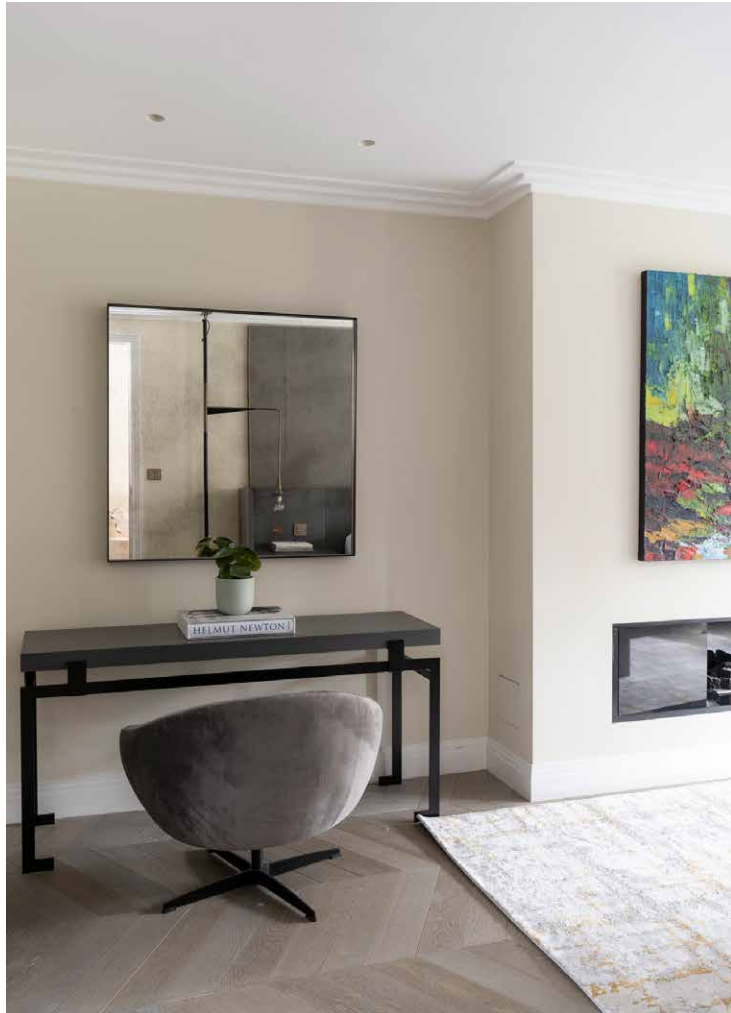


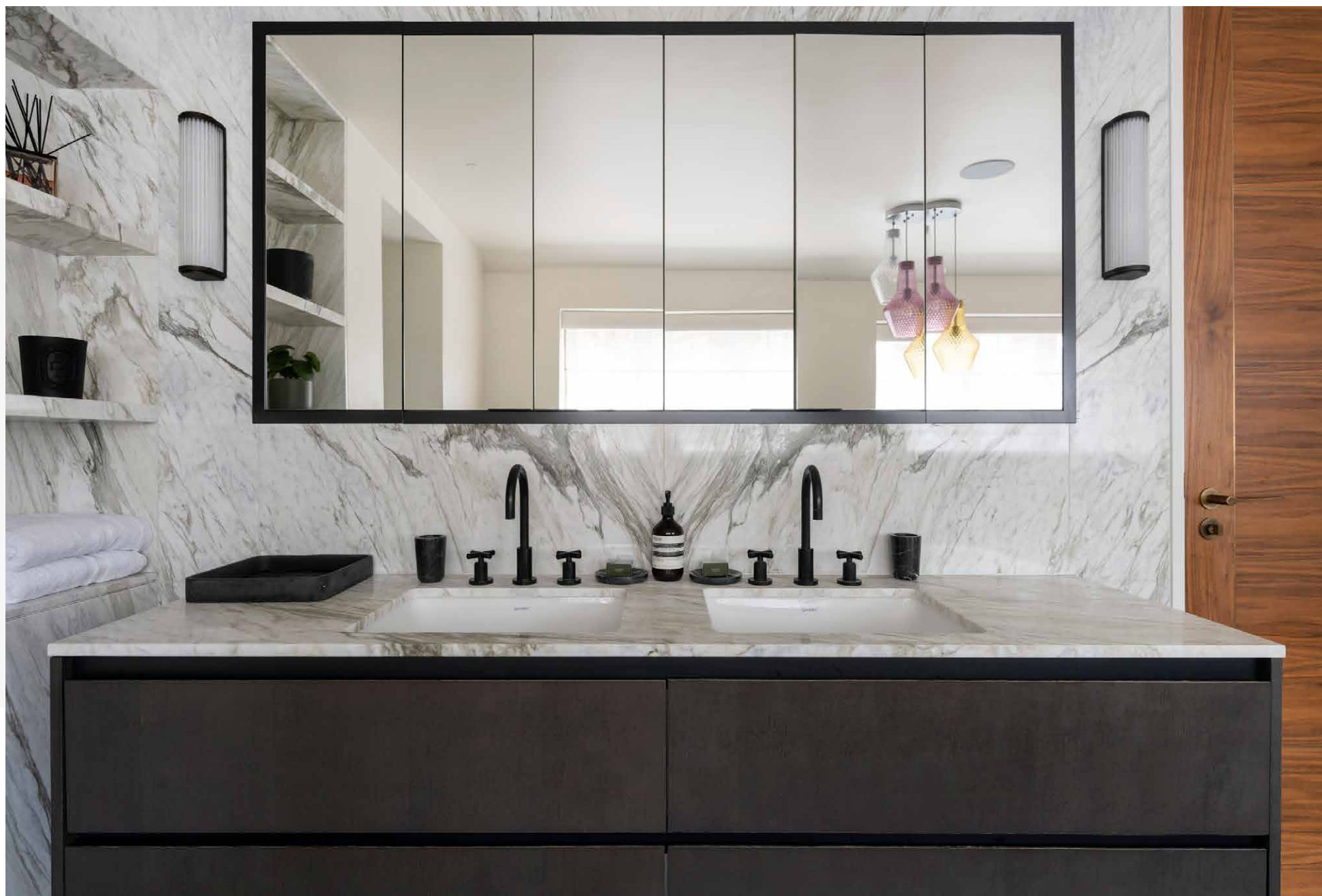
Four further bedrooms are arranged over the top two levels. The standout principal suite occupies the entire first floor, encompassing a walk-in wardrobe and its own TV room, complete with a contemporary fireplace and a balcony. Carpets threaded with subtle gold tones and a panelled wall bring softness. From the platform bed, it's only a few steps to the opulent bathroom. Here, a black, egg-shaped bathtub is joined by a huge walk-in shower wrapped in marble.

Two guest bedrooms – one that features a vaulted ceiling and a mezzanine for storage – are similarly sophisticated and served by a Jack-and-Jill bathroom. A further bedroom enjoys fitted storage and access to a family bathroom, finished in floor-to-ceiling marble. There's also a quiet study for home working.

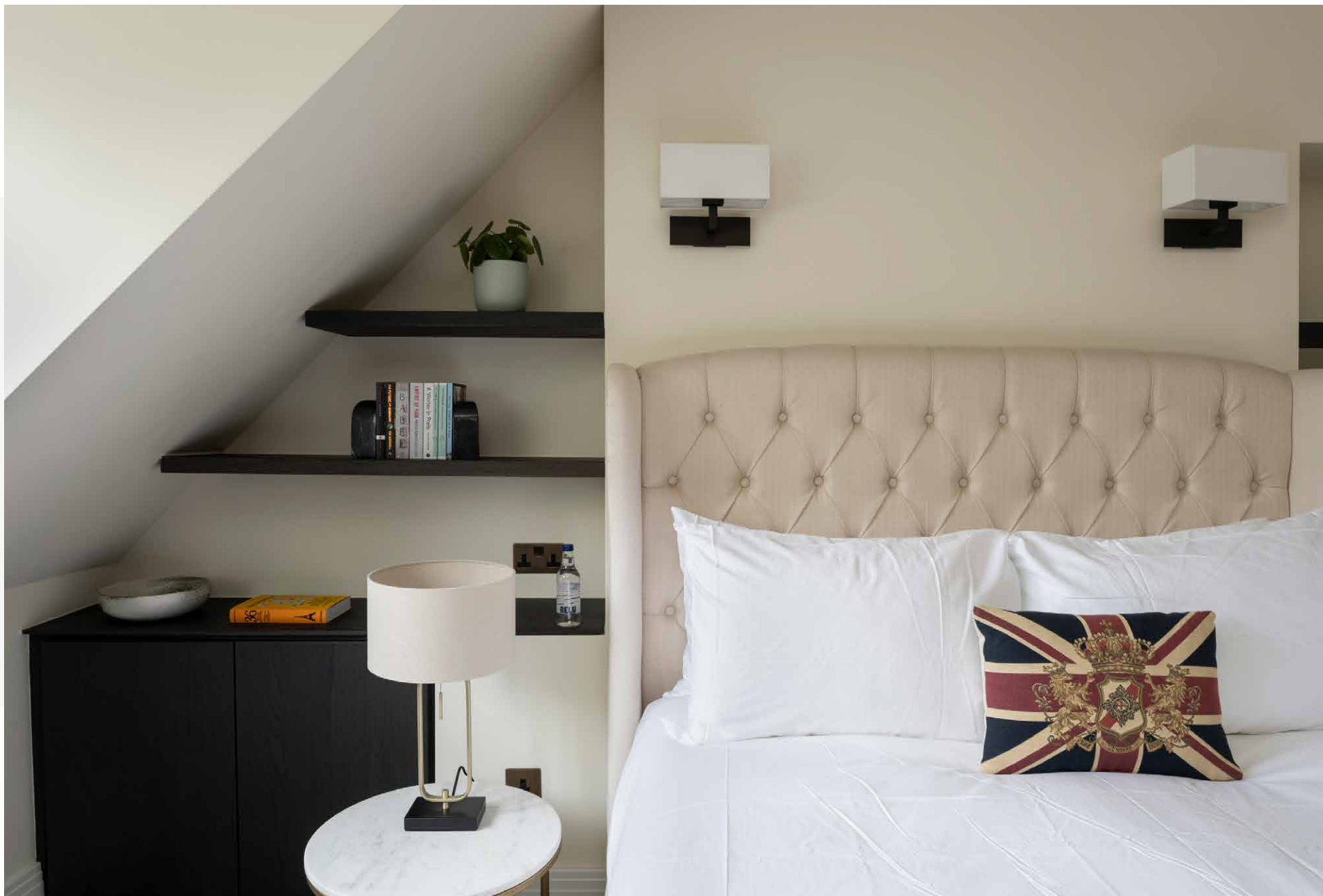
















Property Details

6 Bedrooms, 4 Bathrooms
 Double reception and dining room
 Contemporary eat-in kitchen
 Media room
 Principal bedroom suite
 Guest bedroom suite
 Three further bedrooms
 Two further bathrooms
 Study
 Private patio and access to a communal garden square
 Utility room
 Cloakroom
 Royal Borough of Kensington & Chelsea

Approx. 4,441 sq ft / 209 sq m

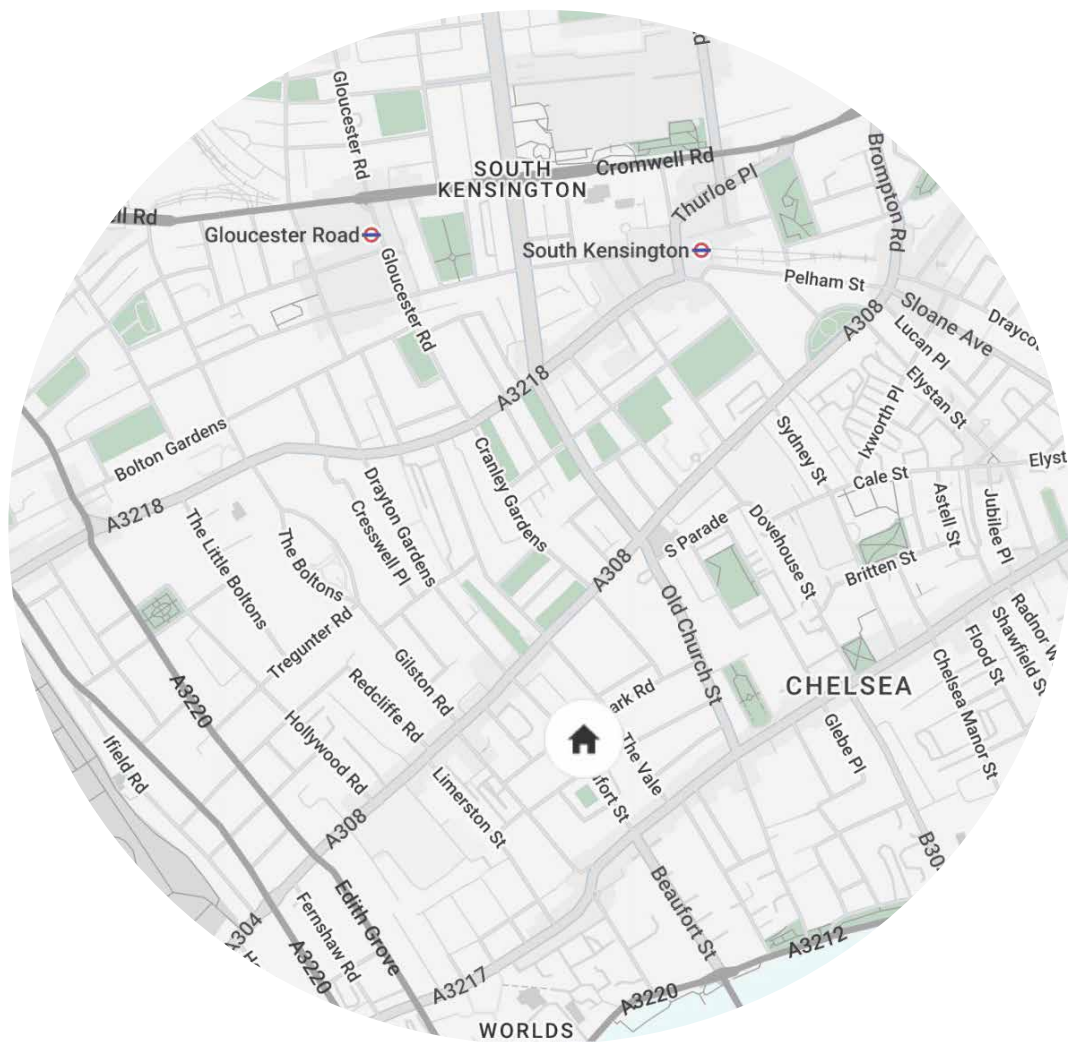
EPC=C

Deposi: £60,000

Council Tax Band: H

Approx. Gross Internal Area = 4441 sq ft / 412.6 sq m

Floor plans are for illustrative purposes only and not to scale. Compliant with RICS code of measuring practice.
 Furniture layouts are indicative only. This property may be furnished, part-furnished or unfurnished. Please refer to your agent for details.
 Prepared for Domus Nova. Copyright © All Rights Reserved.



Location

Designer boutiques and Michelin-starred restaurants are on your doorstep here and people watching potential. Good days start with a vinyasa flow session at Triyoga followed by brunch at Bluebird and an afternoon film screening at Everyman. Refresh your wardrobe before dinner at Medlar or Chicama. For special occasions, book a table at two-Michelin-starred Claude Bosi at Bibendum.

South Kensington - 15 mins (Piccadilly, Circle, District)

Who — we are



Forward-thinkers in property, design and culture, we're an estate agency that hits refresh.

Domus Nova was born out of a desire to do things differently; to break the traditional agency model and focus on design-led homes in London and Ibiza, all while delivering the highest levels of personal service.

Our story starts in the nineties when we founded Notting Hill's first boutique agency – and we continue to open the doors to the most remarkable spaces, revealing them to our like-minded community.

We want to help you live better – and believe considered design can do that. That's why we remain committed to building on our legacy, in collaboration with BARNES International, an established agency with a market-leading presence in 22 countries.

Uniting our local insight and curated portfolio with BARNES International's expansive reach, we can facilitate the best opportunities in not only London and Ibiza, but also across Europe, the US and further afield – whether that's a château in the South of France, a penthouse in New York, or a chalet in the Swiss Alps.



DOMUS NOVA

Specialising in London
and Ibiza's design-led homes

Let's talk
020 7727 1717
lettings@domusnova.com

The property particulars are a guide not statements. Descriptions, photographs, and plans are for guidance and should be checked by the prospective tenant. The Property is offered "subject to contract and references". No warranties, representations, or Tenancy is given by Domus Nova. Expenses incurred by a prospective tenant will not be reimbursed if the Landlord withdraws prior to the Tenancy Agreement being signed, dated and exchanged and cleared funds received. Furniture and other items shown in a property at viewing may belong to a current tenant. The prospective tenant should verify in writing which fixtures and fittings forms part of the Tenancy. Our full lettings disclaimer together with trading names and our [Privacy Policy](#) is shown on our website

© 2025 Domus Nova in partnership with BARNES International. All rights reserved.

In partnership with
BARNES
INTERNATIONAL REALTY