

DOMUS NOVA



Can Titus, Santa Gertrudis – € 2.950.000

In partnership with **BARNES**
INTERNATIONAL REALTY



Bound by eclectic contemporary design, this two-bedroom finca for sale takes an inspired approach to its traditional framework. Plus, planning permission to expand into a five-bedroom villa.

Set within the tranquil landscape of Santa Gertrudis, this idyllic finca features panoramic views of the Ibicencan countryside. Currently a tranquil two-bedroom island home, full planning permission has been granted to reconfigure the build into a 350m² five-bedroom villa.

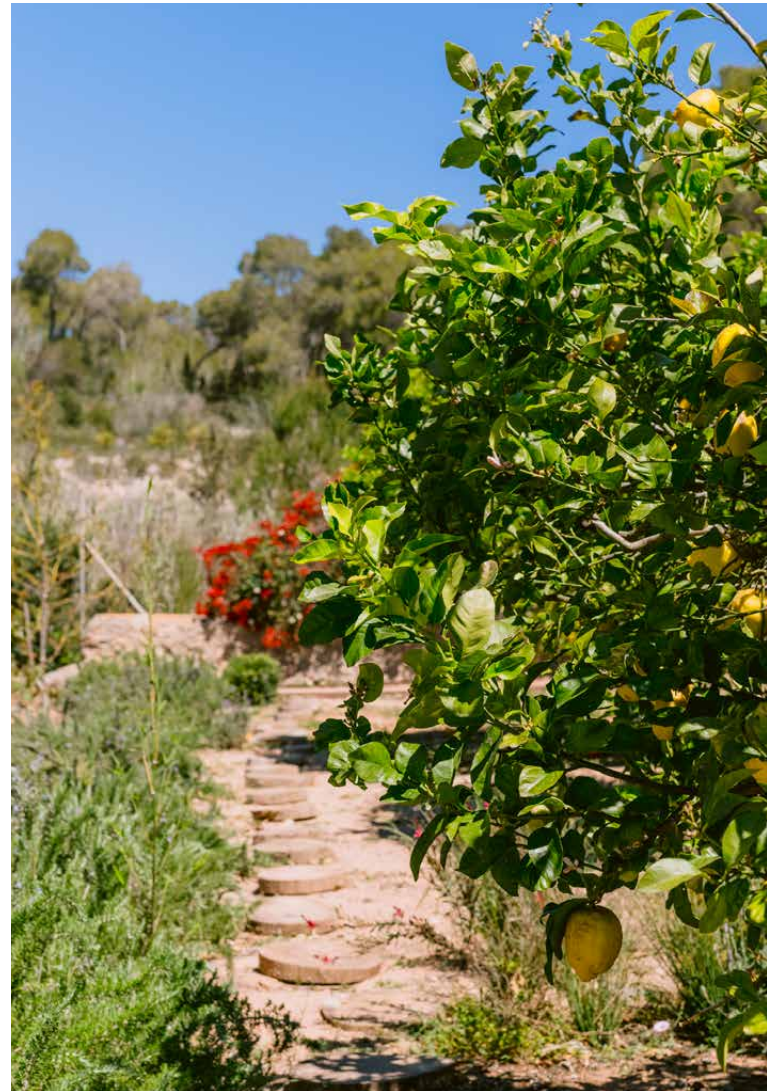
Dotted with blossoming lemon trees and vibrant bougainvillea, alfresco living areas are given priority here. Making the most of countryside views, artful landscaping blends seamlessly with the surroundings to lend a colourful backdrop. Weaving stepping stones guide through the gardens to a decked terrace, where an expansive turquoise pool invites days under the Balearic rays.

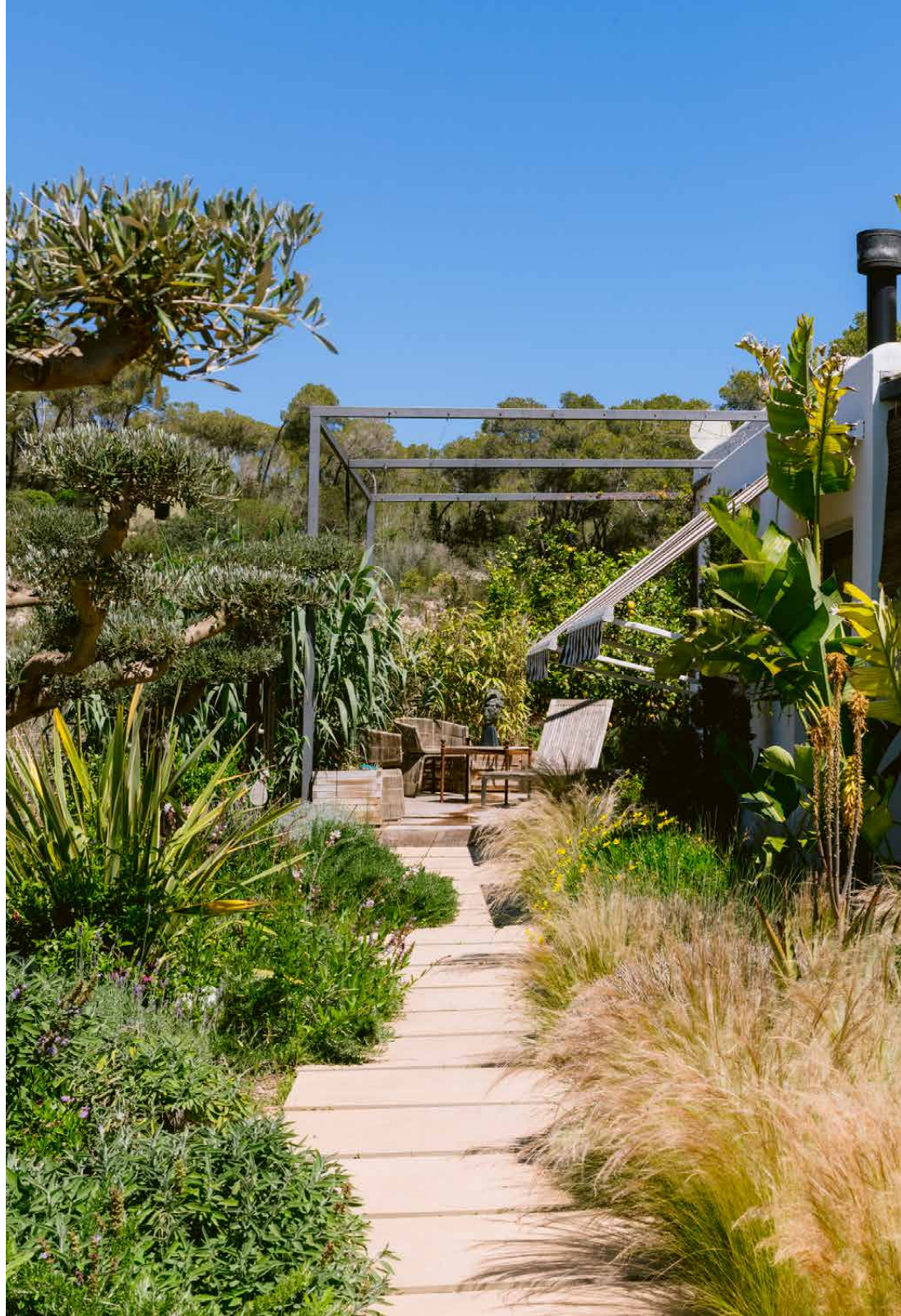
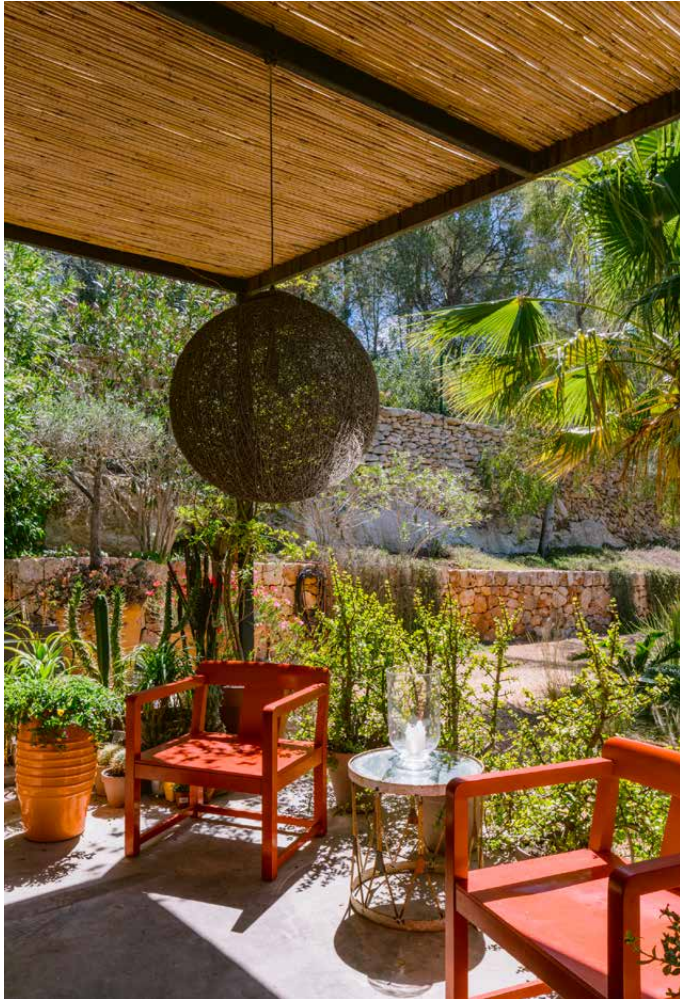
A sheltered dining space guides the way inside, where an open-plan kitchen and reception room embraces diverse design. Rustic meets mid-century modernism, with a suspended fireplace the focal feature of a light-flooded lounge. Smooth stone floors offer a grounding point for natural white walls, following through to a contemporary kitchen. Tied together with sleek white cabinetry and wooden details, it's a calming setting to cook or dine.



























Elsewhere, sleeping quarters are bound by a pared-back palette. Two bedrooms enjoy a restful feel with light, neutral tones, plus considered design that honours the island's architectural heritage.









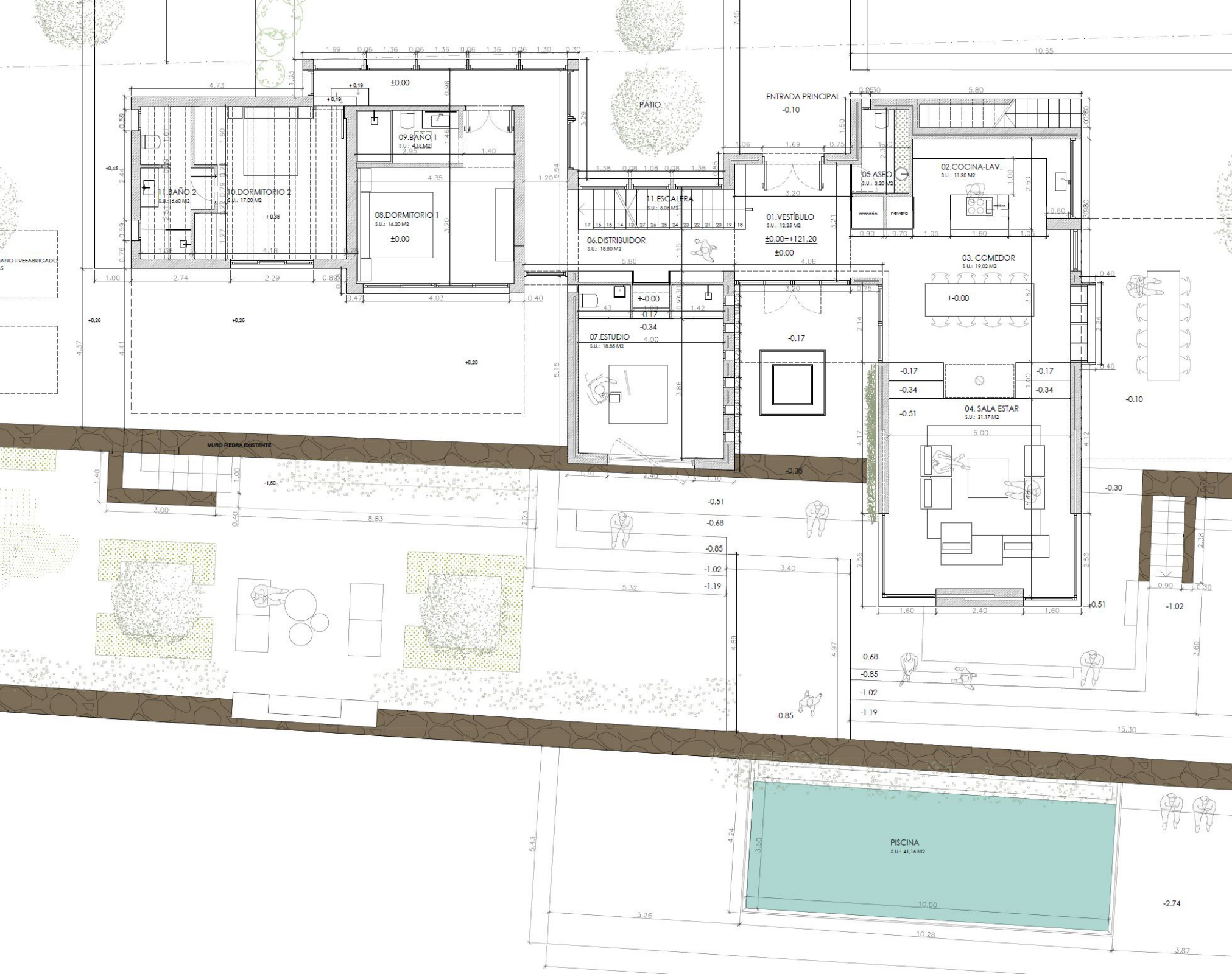


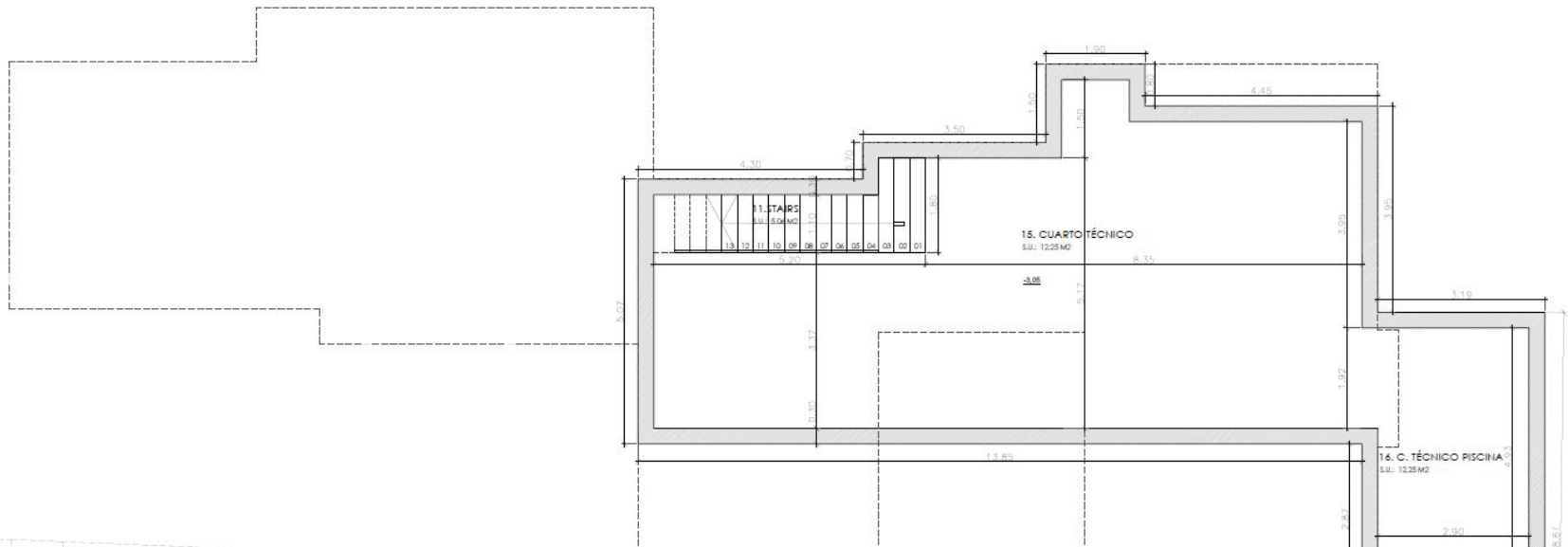
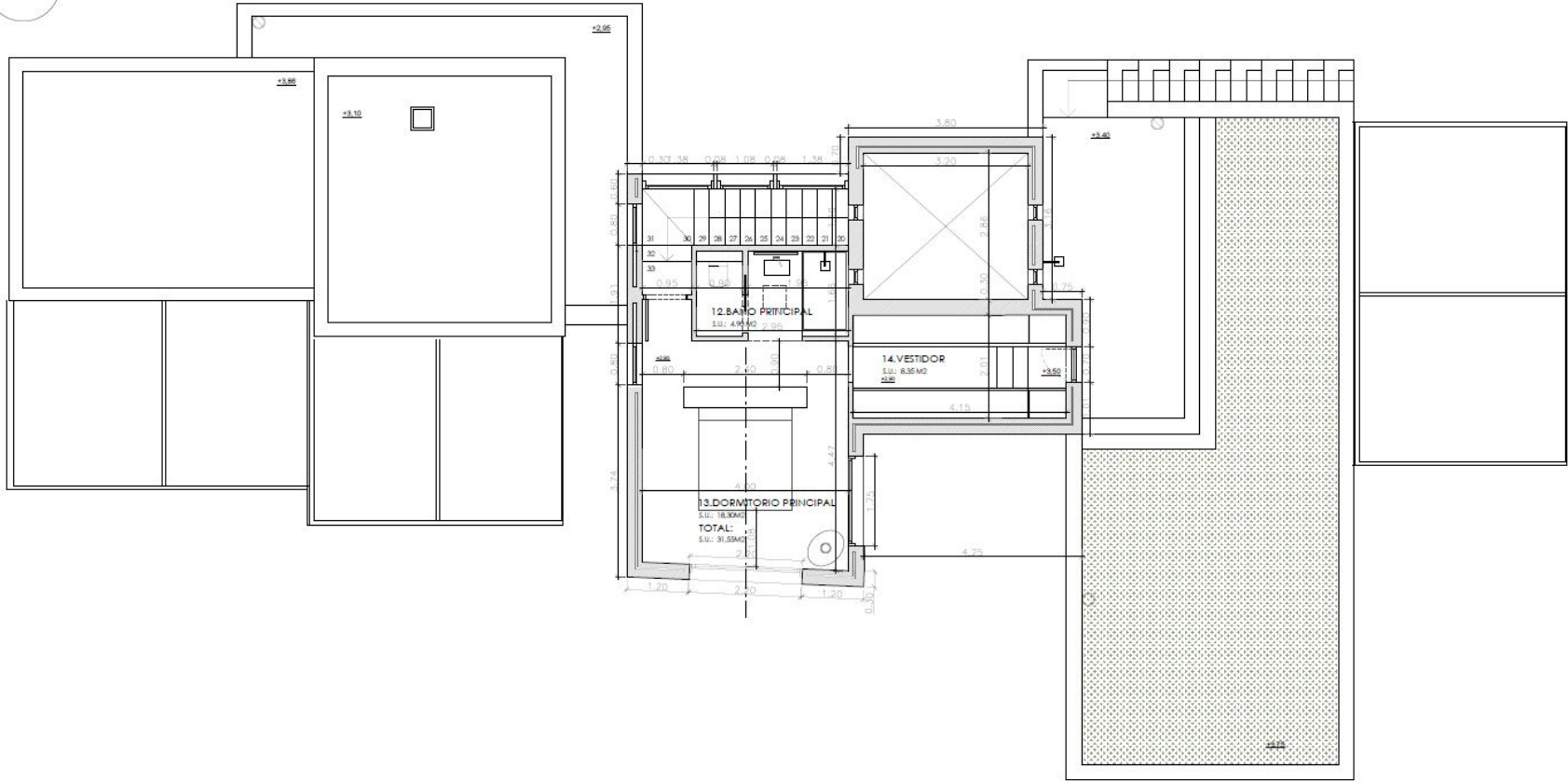
1/1000 @A3

LEGEND

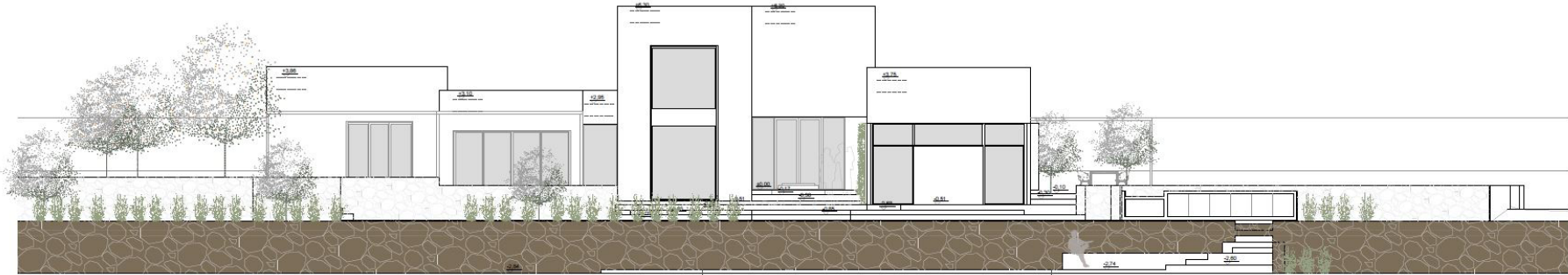
- | | | | |
|--------------------|-----------------------------|------------------------|-------------------------|
| 1. Entrance | 4. Topiary planting | 7. Carob tree terraces | 10. Olive tree terraces |
| 2. Pool area | 5. Orchard area with meadow | 8. Aromatic field | 11. Forest garden |
| 3. Cactus planting | 6. Vine | 9. Animal shelter | A. solar panels |

Proposed Ground Floor Plan





Proposed Elevations



ALZADO OESTE



ALZADO ESTE

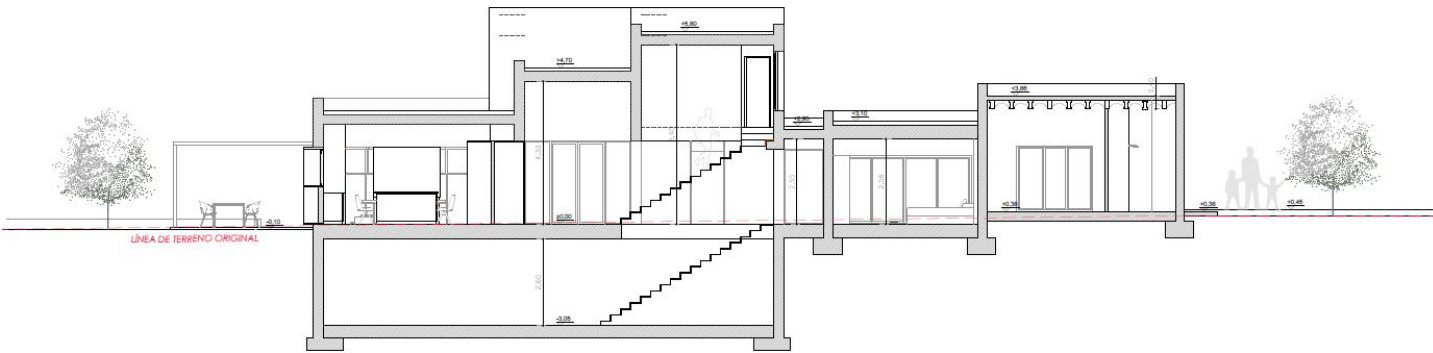




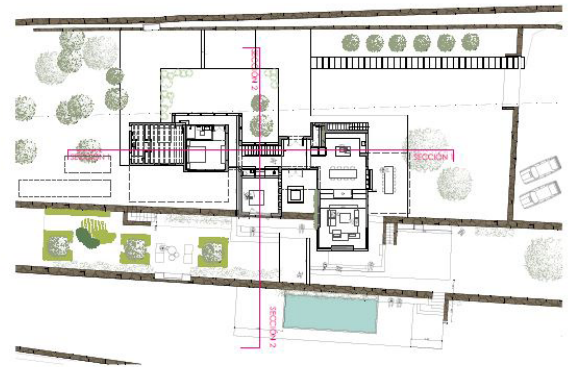
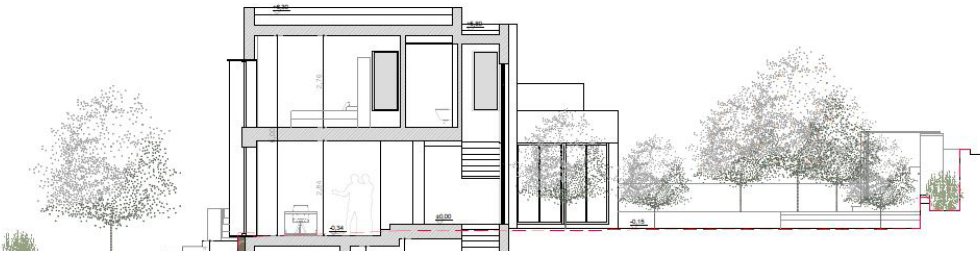
ALZADO NORTE

SECCIONES

ESC: 1/75



SECCIÓN 1





Property Details

2 bedrooms, 2 bathrooms
Planning Permission to expand to a 350 sq m,
five bedroom villa
Open-plan kitchen and lounge
Sheltered dining and lounge area
Two bedrooms
Swimming pool
Valley views
Solar panels
Own water well

Build Size: 100 sq m
Plot Size: 18,500 sq m



Location

Located just outside of Santa Gertrudis, Can Titus enjoys proximity to a cluster of bars, restaurants and shops, alongside a rich agricultural landscape. Head to the local village square to unwind, stopping for breakfast at Musset Cafe or local favourite Chez Bibi. Craft shops and galleries are in easy reach nearby, showcasing bohemian-inspired work. Ibiza Town and the historical streets of Dalt Vila are a short drive away.

Ibiza Town (10 mins)

Ibiza Airport (15 mins)

Santa Gertrudis (3 mins)

Who — we are



Forward-thinkers in property, design and culture, we're an estate agency that hits refresh.

Domus Nova was born out of a desire to do things differently; to break the traditional agency model and focus on design-led homes in London and Ibiza, all while delivering the highest levels of personal service.

Our story starts in the nineties when we founded Notting Hill's first boutique agency – and we continue to open the doors to the most remarkable spaces, revealing them to our like-minded community.

We want to help you live better – and believe considered design can do that. That's why we remain committed to building on our legacy, in collaboration with BARNES International, an established agency with a market-leading presence in 22 countries.

Uniting our local insight and curated portfolio with BARNES International's expansive reach, we can facilitate the best opportunities in not only London and Ibiza, but also across Europe, the US and further afield – whether that's a château in the South of France, a penthouse in New York, or a chalet in the Swiss Alps.



DOMUS NOVA

Specialising in London
and Ibiza's design-led homes

Let's talk
+34 871 51 53 02
ibiza@domusnova.com

The property particulars are a guide not statements. Descriptions, photographs, and plans are for guidance and should be checked a prospective purchaser or tenant. The Property is offered "subject to contract". No warranties, representations, or Tenancy is given by Domus Nova. Expenses incurred by a prospective tenant or buyer will not be reimbursed if the Landlord or the Seller withdraws prior to the Tenancy Agreement being signed, dated and exchanged and cleared funds received. Further details of the Disclaimer together with trading names and our Privacy Policy is shown on our website The IVA position relating to the property may change without notice.

View our privacy policy on how your data is processed and used. To find out how we process Personal Data, please refer to our Privacy Statement and other notices at [Privacy Statement](#).

© 2025 Domus Nova in partnership with BARNES International. All rights reserved.

In partnership with
BARNES
INTERNATIONAL REALTY