

DOMUS NOVA



Can Mateu, North East Ibiza

For 12 guests



Surrounded by nature, this six-bedroom rental villa pairs an unrivalled sense of privacy with proximity to Ibiza town.

Set within sprawling grounds between San Rafael and Ibiza Town, this impeccably restored Ibicencan villa is a peaceful backdrop for island life.

Inside, a sense of the villa's heritage prevails through exposed brick walls, Sabina beams and organic textures. Arranged around a central courtyard, living spaces enjoy an effortless connection with the outdoors. Walls of glass cast light across bright, airy spots to socialise, while sliding doors allow a seamless flow through the lounge to the kitchen and dining room.





























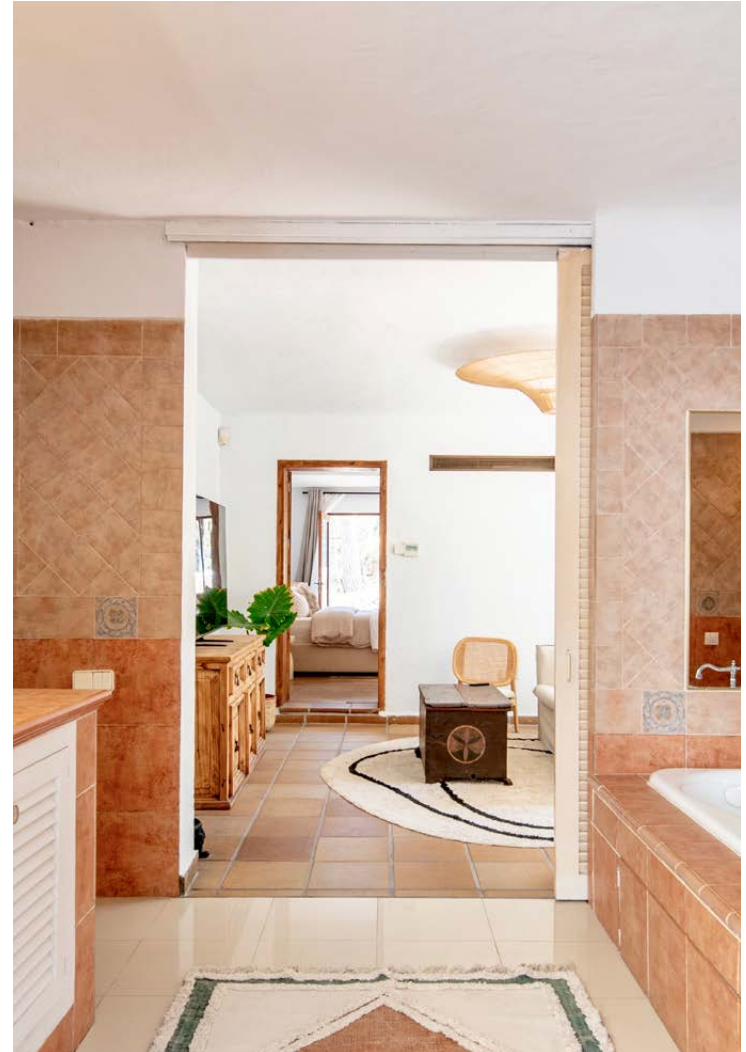
Outdoors, a terrace turned sunseeker's oasis comprises an outdoor kitchen and dining area, plus a pergola to seek shade from the sun. When temperatures soar, there's a turquoise swimming pool to cool off. Elsewhere, explore the grounds to discover an outdoor gym, tennis court and organic farm with chickens.

Come evening, six bedrooms embrace a refined rustic aesthetic. Two principal bedrooms enjoy en suite bathrooms, while four further bedrooms are served by two shower rooms.





























Property Details

- Large kitchen and dining room
- Double reception room
- Six bedrooms
- Outdoor kitchen and dining area
- Sheltered outdoor lounge
- Courtyard
- Swimming pool and hot tub
- Tennis court
- Table tennis
- Outdoor gym
- Outdoor bar
- Organic farm

Tourist License: ETV-1426-E



Location

With its quiet surrounds and countryside views, this peaceful villa enjoys one of Ibiza's most coveted locations. It's your gateway to Ibiza Town when you want it, and a retreat when you need it. Days spent between UNESCO-protected Dalt Vila and star-studded Marina Botafoch. Tucking into the high-end restaurants along the sandy crescent of Cala Talamanca, or the local-favourite shops and watering holes of Jesús.

Ibiza Town (10mins)
Santa Gertrudis (10mins)
Santa Eularia (6mins)
Ibiza Airport (15mins)

Specialising in Ibiza and
London's design-led homes

Let's talk

+34 871 515 302

ibiza@domusnova.com

domusnova.com/ibiza

The property particulars are a guide not statements. Descriptions, photographs, and plans are for guidance and should be checked a prospective purchaser or tenant. The Property is offered "subject to contract". No warranties, representations, or Tenancy is given by Domus Nova. Expenses incurred by a prospective tenant or buyer will not be reimbursed if the Landlord or the Seller withdraws prior to the Tenancy Agreement being signed, dated and exchanged and cleared funds received. Further details of the Disclaimer together with trading names and our Privacy Policy is shown on our website The IVA position relating to the property may change without notice.

View our privacy policy on how your data is processed and used. To find out how we process Personal Data, please refer to our Privacy Statement and other notices at [Privacy Statement](#).

© Domus Nova 2024. All rights reserved.