

DOMUS NOVA



Can Amigo, Atzaro Valley
For 10 guests



Hugged by rolling hills, this five-bedroom villa for rent pairs Californian style with effortless escapism.

Skilfully designed by the visionaries at Romano Arquitectos, Ibicencan character gets a Californian accent at Can Amigo. Behind a striking modernist façade, sprawling open-plan living areas set the tone for laid-back living.

Bringing life and light to poured concrete floors, sunlight streams through expansive glass screens. Designed for drifting between spaces, there's a seamless flow through the kitchen, dining and lounge areas. An effortless intertwining of old and new, Sabina-wood cladding is combined with sleek contemporary furnishings, while wall-to-wall windows create barely-there boundaries with the valley beyond.

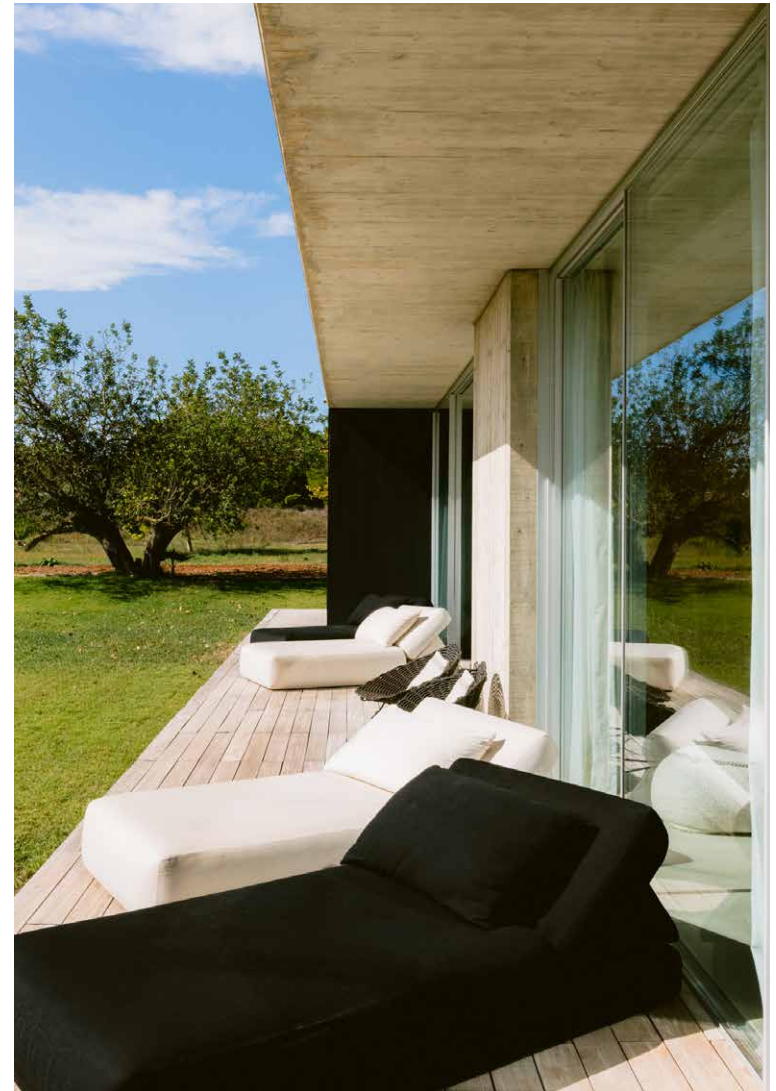
In the glass-walled principal bedroom suite, smooth stone floors are juxtaposed with a panelled wooden wall. Suspended from the ceiling, a floating fireplace adds a space-age touch. Hidden at the rear of the room, a freestanding bathtub invites long evening soaks, or head to the en suite bathroom for picturesque views of the landscape as you shower. Four further bedroom suites each enjoy generous proportions and views worth waking up for.

Outside, luxury day beds cluster around the large pool. Post-swim, head to one of the chill-out areas or the al fresco summer kitchen, barbecue and dining table decorated in the dappled shade of trees. On cooler evenings, work up a sweat in the gym or on the football pitch, or make the most of the private cinema with movie marathons. Ideal for those with children, there's also an outdoor children's playhouse.





















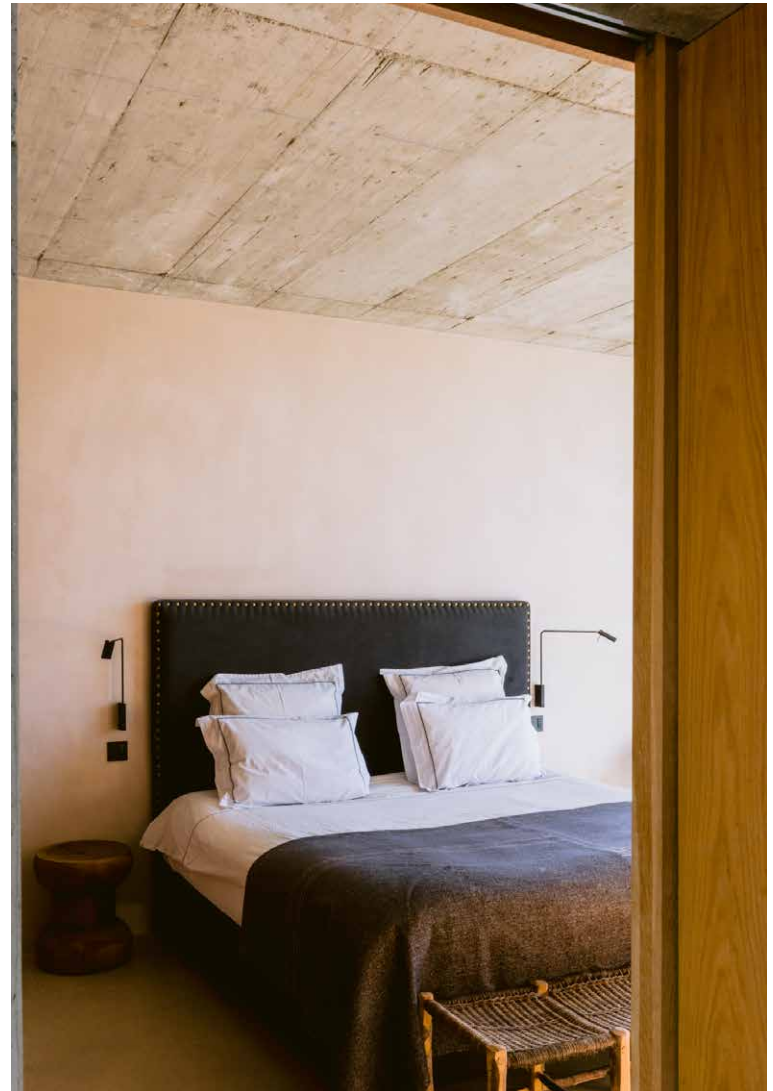








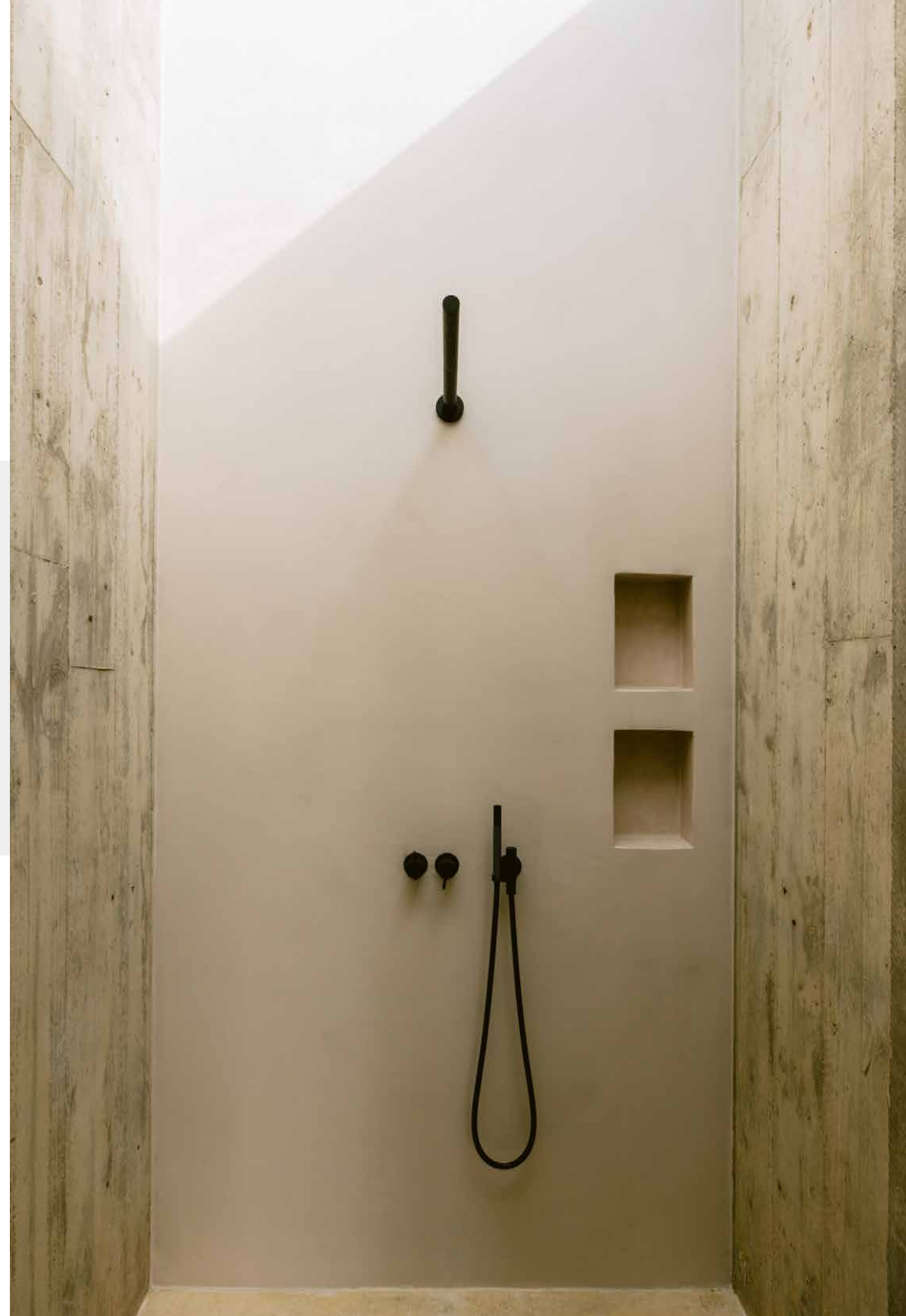














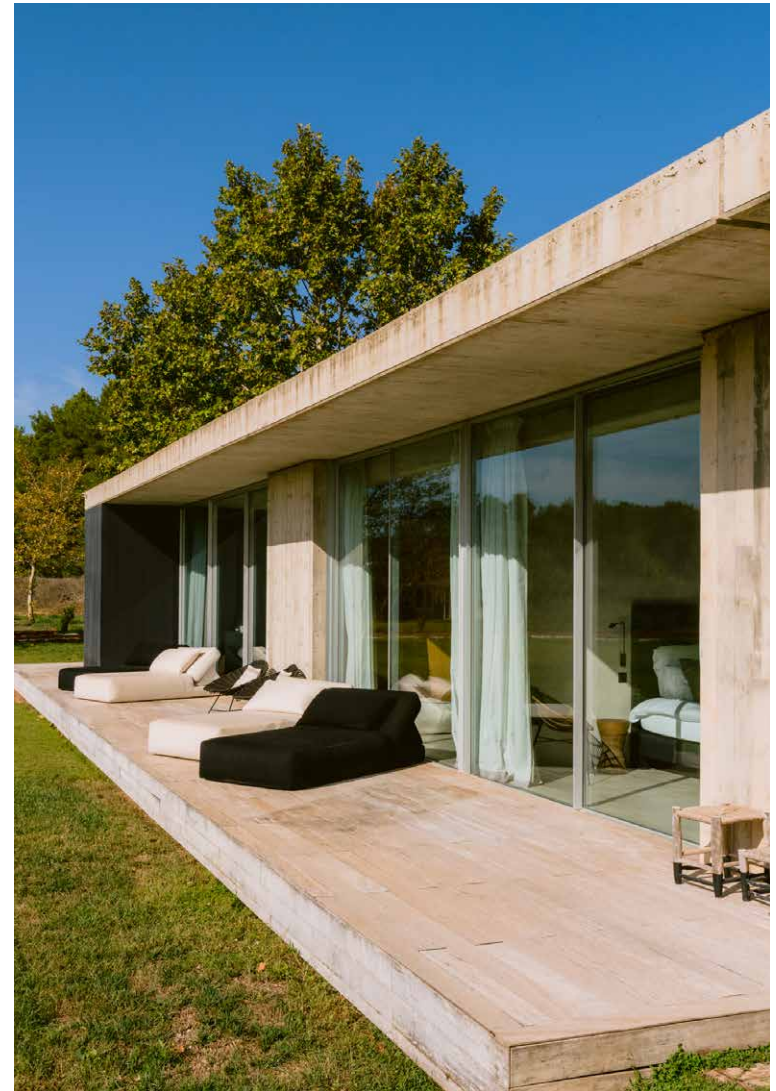














Property Details

5 Bedroom, 6 Bathrooms

Designed by Romano Arquitectos

Vast open-plan kitchen, dining and reception room

Five bedroom suites

Cinema room

Swimming pool

Multiple terraces

Football pitch

Children's playhouse

Study space

Gym

Tourist License: ETV-1392-E

Build size: 600 sq m

Plot size: 24,000 sq m



Location

The bohemian cove of Benirràs is within a short drive, as are the free-spirited bars and galleries of Santa Gertrudis. But it's the fortified village of Sant Llorenç de Balàfia that is your closest neighbour. Come to see some of Ibiza's best medieval architecture, including watchtowers once used to spot pirates. Stay for farm-to-fork lunches at bougainvillea-clad finca of Can Muson de sa Vila.

Santa Eulalia (7 mins)

Santa Gertrudis (12 mins)

Ibiza Town (20 mins)

Ibiza Airport (28 mins)

Specialising in Ibiza and
London's design-led homes

Let's talk
+34 871 515 302
ibizarentals@domusnova.com
domusnova.com/ibiza

The property particulars are a guide not statements. Descriptions, photographs, and plans are for guidance and should be checked a prospective purchaser or tenant. The Property is offered "subject to contract". No warranties, representations, or Tenancy is given by Domus Nova. Expenses incurred by a prospective tenant or buyer will not be reimbursed if the Landlord or the Seller withdraws prior to the Tenancy Agreement being signed, dated and exchanged and cleared funds received. Further details of the Disclaimer together with trading names and our Privacy Policy is shown on our website The IVA position relating to the property may change without notice.

View our privacy policy on how your data is processed and used. To find out how we process Personal Data, please refer to our Privacy Statement and other notices at [Privacy Statement](#).

© Domus Nova 2023. All rights reserved.