

# DOMUS NOVA

## Cambridge Gardens

North Kensington W10

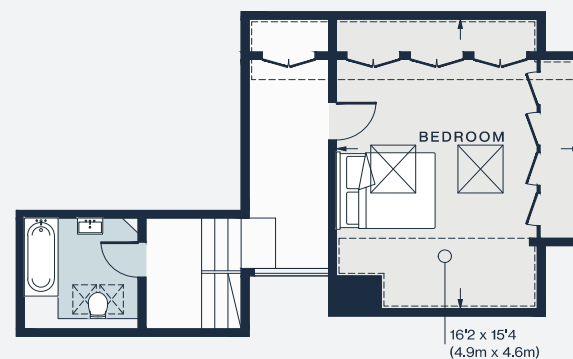
APPROXIMATE GROSS INTERNAL AREA

1,322 sq ft / 122.8 sq m

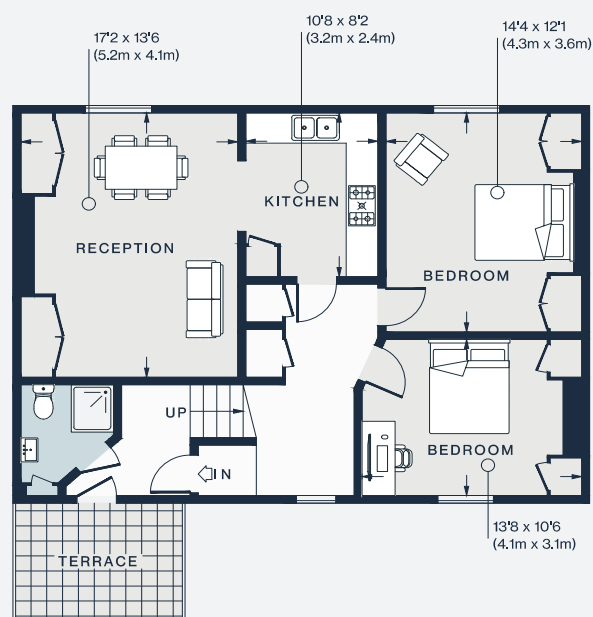
020 7727 1717

domusnova.com

LONDON | IBIZA



THIRD FLOOR



SECOND FLOOR

Approx. Gross Internal Area = 1,322 sq ft / 122.8 sq m

Floor plans are for illustrative purposes only and not to scale. Compliant with RICS code of measuring practice. Furniture layouts are indicative only. This property may be furnished, part-furnished or unfurnished. Please refer to your agent for details.