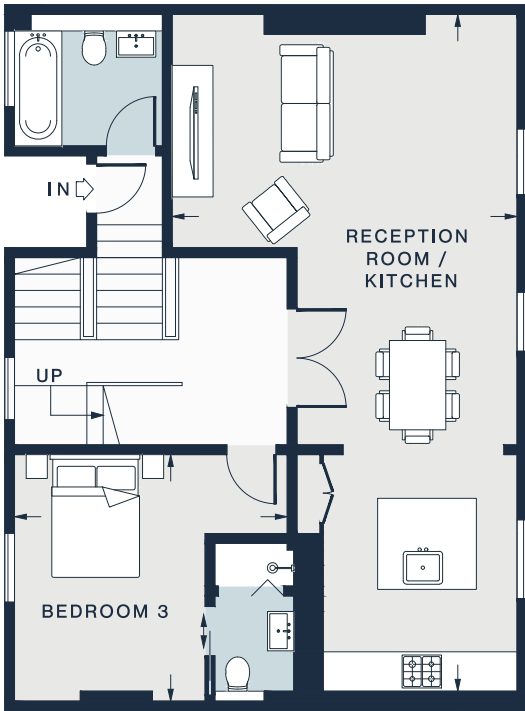
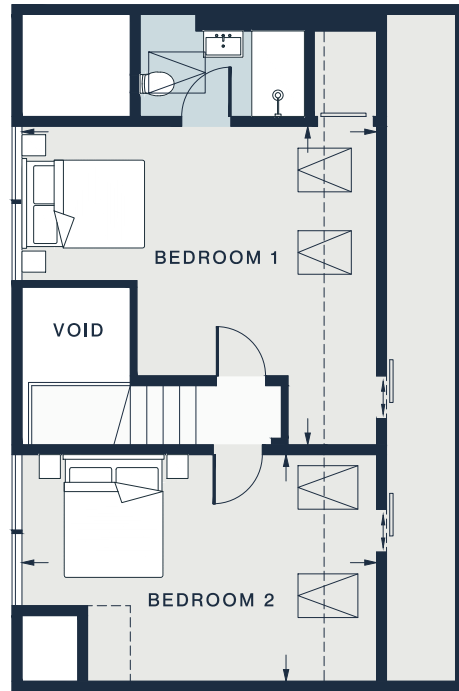


 = REDUCED HEAD HEIGHT BELOW 1.5M

SECOND FLOOR
HALF LANDING



SECOND FLOOR



THIRD FLOOR

RECEPTION ROOM / KITCHEN

33'10 x 17'1 (10.3m x 5.2m)

HALF LANDING

10'4 x 7'3 (3.1m x 2.2m)

BEDROOM 1

17'9 x 15'11 (5.4m x 4.8m)

BEDROOM 2

17'9 x 11'4 (5.4m x 3.4m)

BEDROOM 3

13'7 x 12'4 (4.1m x 3.7m)

Approx. Gross Internal Area = 1,625 sq ft / 151 sq m (Excluding Void)

Floor plans are for illustrative purposes only and not to scale. Compliant with RICS code of measuring practice.
Prepared for Domus Nova. Copyright © All Rights Reserved.