

DOMUS NOVA

Cambridge Gardens

Notting Hill W11

APPROXIMATE GROSS INTERNAL AREA

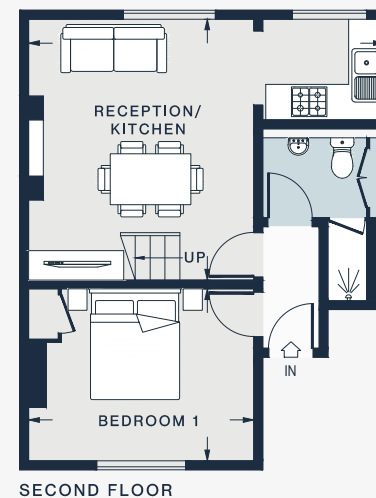
777 sq ft / 72.2 sq m

020 7221 7817

domusnova.com

LONDON | IBIZA

[] = Reduced head height below 1.5m



RECEPTION / KITCHEN

19'8 x 14'5 (5.9m x 4.3m)

BEDROOM 1

18'8 x 13'0 (5.6m x 3.9m)

BEDROOM 2

12'6 x 9'6 (3.8m x 2.9m)

Floor plans are for illustrative purposes only and not to scale. Compliant with RICS code of measuring practice. Furniture layouts are indicative only. This property may be furnished, part-furnished or unfurnished. Please refer to your agent for details.