

# DOMUS NOVA

Callow Street

Chelsea

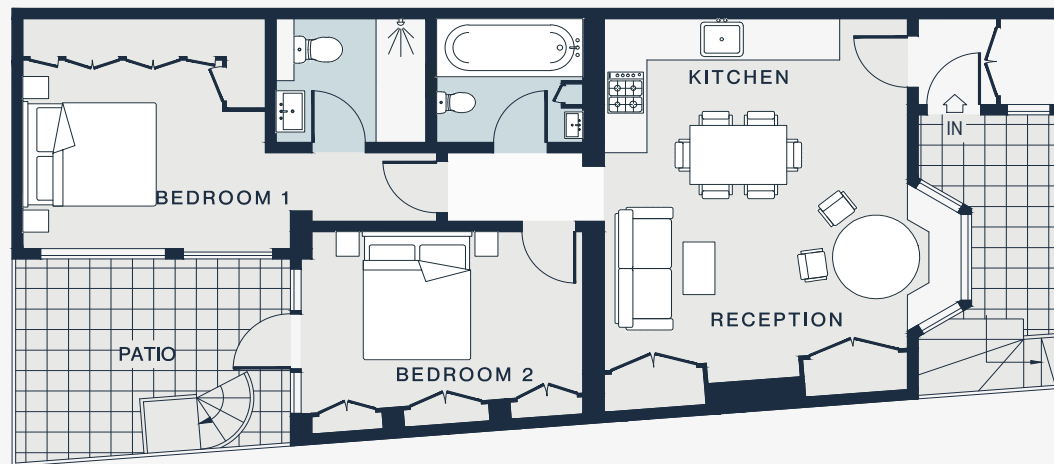
APPROXIMATE GROSS INTERNAL AREA

**709 sq ft / 65.9 sq m**

020 7727 1717

domusnova.com

LONDON | IBIZA



LOWER GROUND FLOOR

KITCHEN / RECEPTION

18'10 x 16'5 (5.7m x 5.0m)

BEDROOM 1

11'6 x 11'2 (3.5m x 3.4m)

BEDROOM 2

12'6 x 9'8 (3.8m x 2.9m)

Approx. Gross Internal Area = 709 sq ft / 65.9 sq m

Floor plans are for illustrative purposes only and not to scale. Compliant with RICS code of measuring practice. Furniture layouts are indicative only. This property may be furnished, part-furnished or unfurnished. Please refer to your agent for details.